

2024
16 May



Republic of Lebanon—Ministry of Public Health

Acute Flaccid Paralysis & Poliovirus Surveillance Indicators

Worldwide (www.polioeradication.org)

Globally, last week — Wild Poliovirus WPV1 was detected in Afghanistan (1 AFP, 2 ES) and Pakistan (26 ES). Last week positive findings, circulating Vaccine Derived Poliovirus cVDPV2 was detected in Ivory Coast (4 ES), Nigeria (5 AFP) and Yemen (2 AFP).

Table (1): Worldwide Polio positive samples

Virus	Sources	Cumulative 2023	Cumulative 2024	Last week	Notes
WPV1	AFP	12	5	1	Pakistan, Afghanistan
	ES/Other	187	163	28	
cVDVP1	AFP	134	1	0	Madagascar
	ES	91	0	0	
	Other	7	0	0	
cVDPV2	AFP	390	33	7	Last week: Ivory Coast, Nigeria, Yemen
	ES	334	50	4	
	Other	133	13	0	

AFP Acute Flaccid Paralysis case, ES Environmental Surveillance

Lebanon — Summary indicators

Lebanon — During the past 2 weeks, 3 new cases were reported from the North (2) and South (1), aged 0-4 y (1), 5-9 y (1) and 10-14y (1), and vaccinated. As cumulative, 31 AFP cases were reported from 8 provinces. No poliovirus (wild or vaccine-derived) was detected.

Table 2: National indicators for AFP surveillance, 2024

Indicator	Value	Target
AFP last week (nb)	3	1+
Total AFP (nb)	31	
Annualized NP AFP rate (/100000)	4.82	2+
Specimen adequacy (%)	83.9%	80+
Notification within 7 d (%)	83.9%	80+
Investigation within 48h (%)	100.0%	80+
Zero dose AFP (6m-59m) (nb)	0	
NPEV among specimens (%)	0.0%	10+
Sabin virus (nb)	0	-
Vaccine Derived Poliovirus (nb)	0	0
Wild Poliovirus (nb)	0	0
Final classification (nb)	17	-

Table 3: AFP/Polio surveillance indicators by province

Province	AFP cases, 2024					Zero reporting		Environmental surveillance, 2023			
	AFP (n)	NP AFP rate (/100000)	Adequacy (%)	Notified in 7 d (%)	Zero dose	Nb received reports	% Completeness	Sep	Oct	Nov	Dec
North	8	9.1	75%	88%	0	409	95%	NPEV/SL3	SL1/3	NPEV/SL3	NPEV/SL3
Akkar	2	3.3	100%	100%	0	305	100%				
Bekaa	3	4.1	67%	33%	0	176	98%	NPEV/SL1/3	SL1/3	SL3	SL3
Baalbeck Hermel	3	6.1	100%	100%	0	324	95%				
South	3	3.7	33%	67%	0	803	97%	SL3	SL3	NPEV/SL3	NPEV/SL3
Nabatieh	2	4.3	100%	50%	0	288	94%				
Beirut	4	13.6	100%	100%	0	90	100%	NPEV/SL3	SL1/3	NPEV/SL1/3	SL3
Mount Lebanon	6	2.8	100%	100%	0	208	96%				

Table 4: Indicators by district, 2024

District	AFP	Rate/100,000	Adequacy
Caza			
Akkar	2	4.62	100%
Aleyh	2	7.10	100%
Baabda	1	1.90	100%
Baalbeck	2	8.63	100%
Batroun	0		
Becharreh	0		
Beirut	4	14.75	100%
West Bekaa	1	8.71	100%
Bint Jbeil	0		
Chouf	0		
Hasbaya	0		
Hermel	1	28.09	100%
Jbeil	1	8.77	100%
Jezzine	0		
Kesrwan	0		
Koura	1	11.36	0%
Marjeoun	0		
Minieh Danieh	3	20.59	100%
Metn	2	4.41	100%
Nabatieh c	2	10.20	100%
Rashaya	0		
Saida	3	8.32	33%
Sour	0		
Tripoli	3	11.76	67%
Zahleh	2	7.83	50%
Zghorta	1	10.92	100%

Fig 1: AFP cases by week, 2024

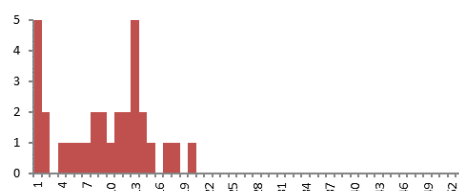


Table 3: Indicators by nationality, 2024

Population	AFP (n)	Annualized rate /100000	Specimen adequacy (%)	Notified within 7 d (%)
Resident	26	6.02	88%	88%
Palestinian	0	0.00	-	-
Syrian	5	2.87	60%	60%