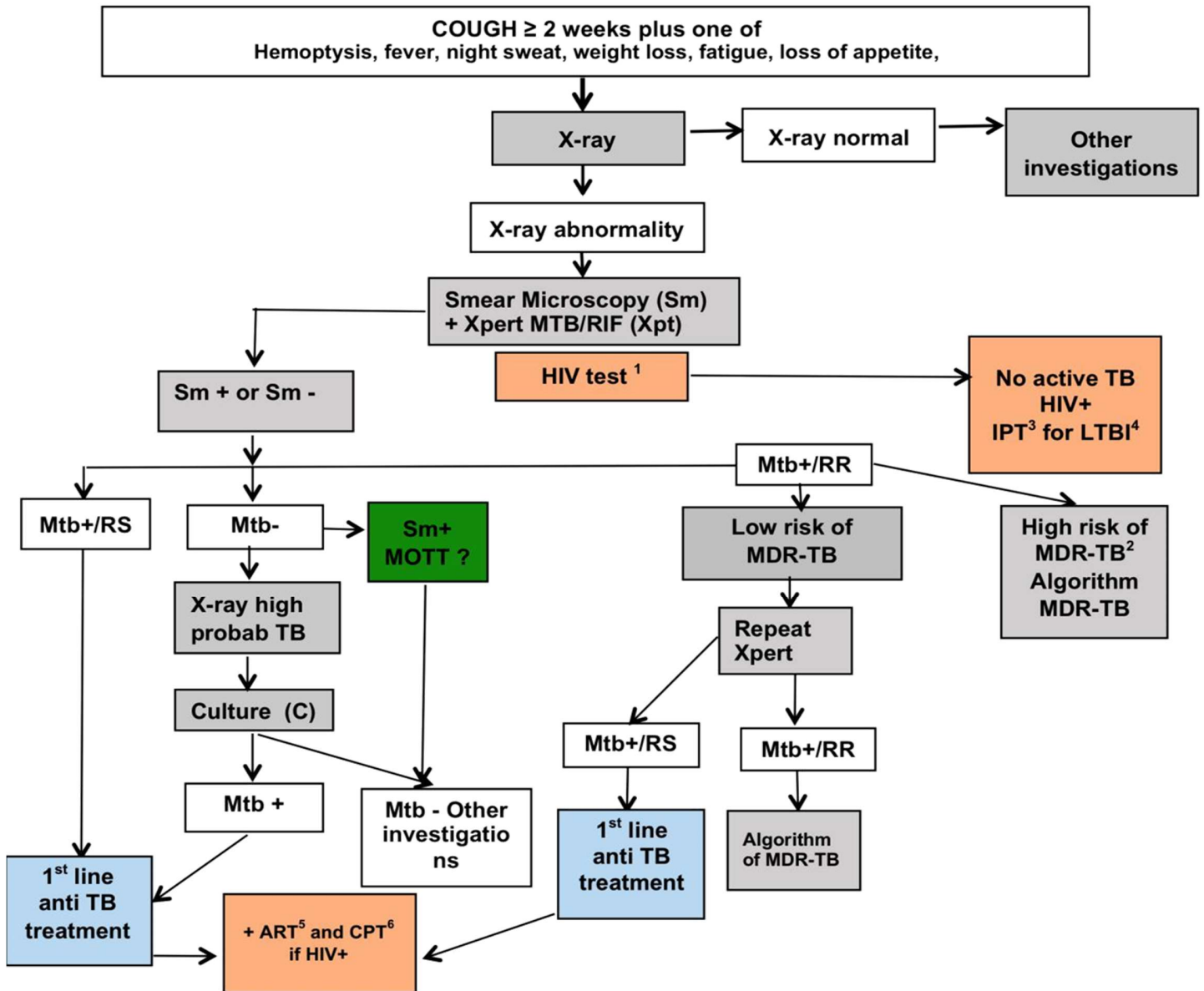


ALGORITHM FOR PULMONARY TB



- 1 HIV counseling and testing to be offered to all patients with TB.
- 2 High risk MDR-TB: relapse, failure of 1st line treatment, treatment after interruption (more than 2 months), contact with a person with MDR-TB, exposure in institutions or areas with high prevalence of MDR-TB prisoners, PLHIV.
- 3 IPT: INH Preventive Therapy
- 4 LTBI: Latent TB Infection
- 5 ART: Anti Retroviral Treatment
- 6 CPT: Cotrimoxazol Preventive Therapy