

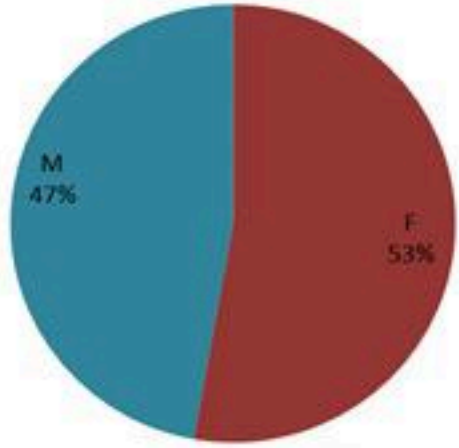
ترصد الكوليرا في لبنان 13 كانون الاول 2022

الجمهورية اللبنانية
وزارة الصحة العامة
برنامج الترصد الوبائي

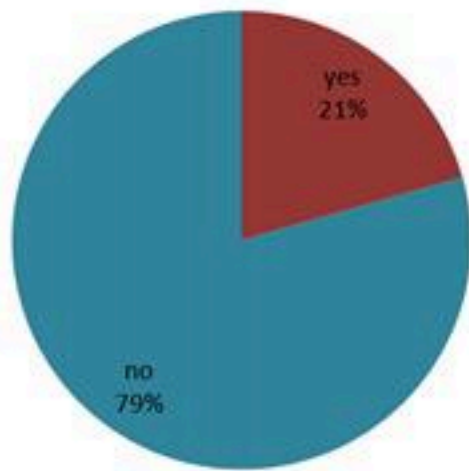


الخطوط الساخنة

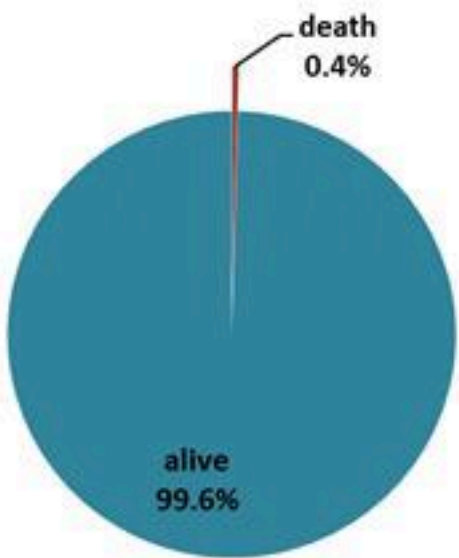
1760 (الصليب الأحمر)
1787 (وزارة الصحة)



حسب الجنس
(المشبهة والمتبنة)



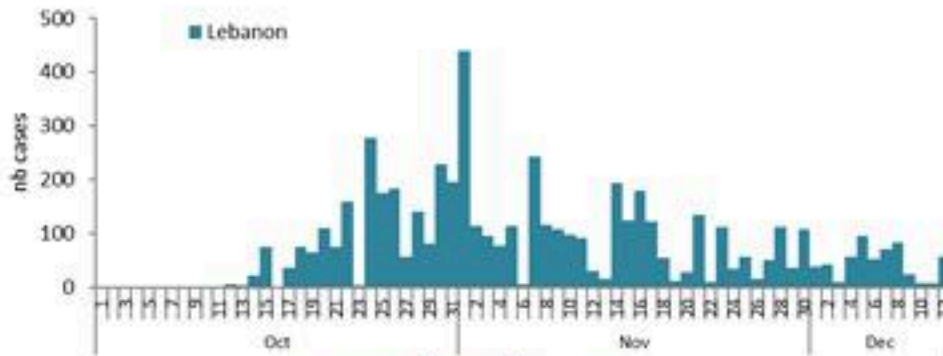
حسب الاستشفاء
(المشبهة والمتبنة)



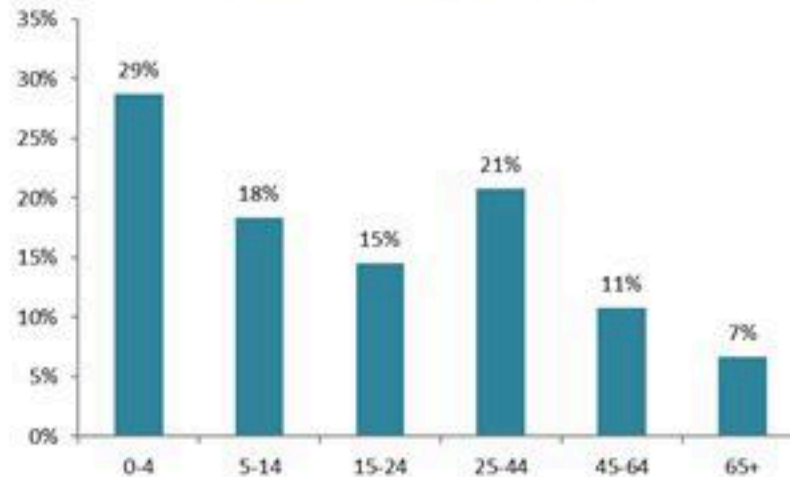
حسب تطور
الحالة
(المشبهة والمتبنة)

الوفيات (المتبنة)		الحالات المثبتة		كافة الحالات المشبهة والمتبنة	
التراكمي	الجديدة (آخر 24 ساعة)	التراكمي	الجديدة (آخر 24 ساعة)	التراكمي	الجديدة (آخر 24 ساعة)
23	0	660	2	5186	50

حسب تاريخ الإبلاغ
(للحالات المثبتة والمتبنة)



حسب الفئة العمرية
(للحالات المشبهة والمتبنة)



استعمال الاسره الاستشفائية
(للحالات المثبتة والمتبنة)



حسب البلده
(للحالات المثبتة)



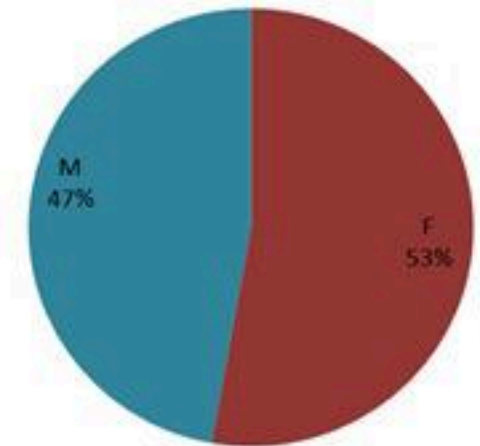
Cholera Surveillance Report

13 Dec 2022

Call Centers
 1760 (Red Cross)
 1787 (MOPH)

All cases (suspected and confirmed)		Confirmed Cases		Deaths (confirmed)	
New (past 24 h)	Cumulative	New (past 24 h)	Cumulative	New	Cumulative
50	5186	2	660	0	23

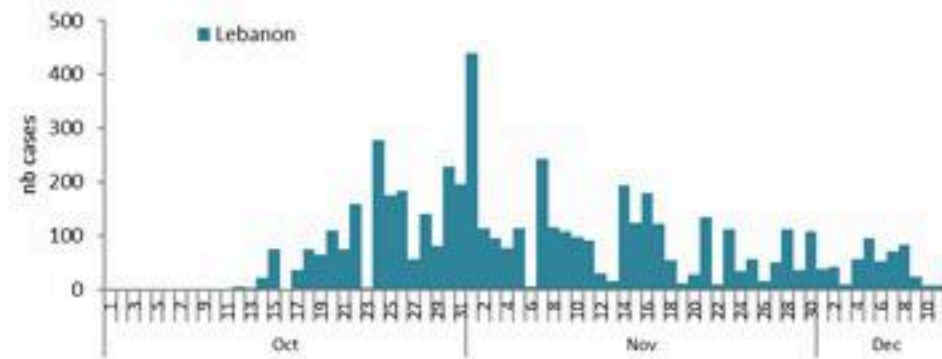
By Sex
(suspected and confirmed)



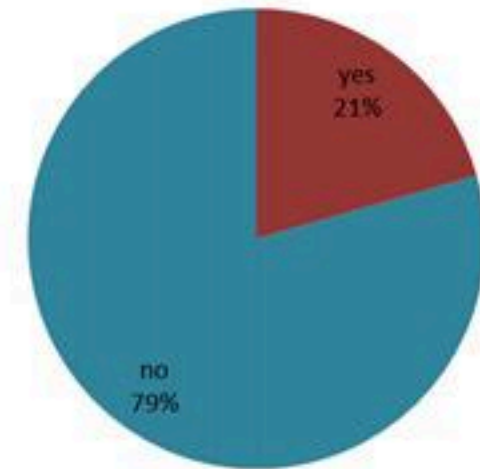
Occupied hospital beds
(suspected and confirmed)



By date of report
(suspected and confirmed)



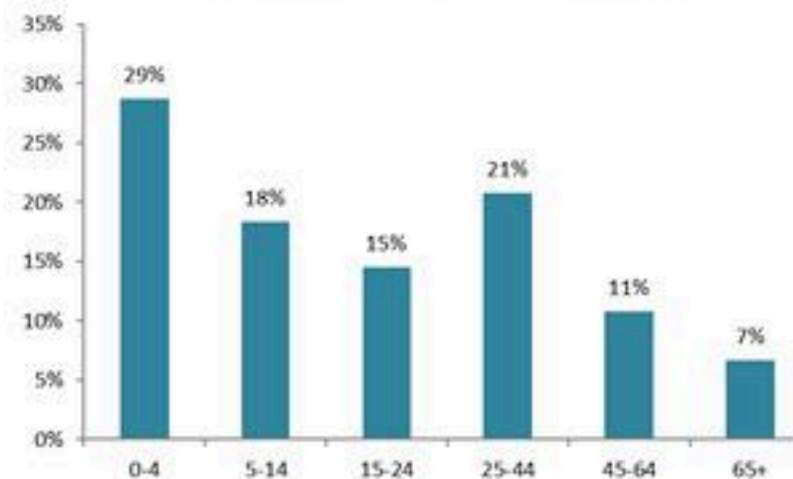
By Hospital Admission
(suspected and confirmed)



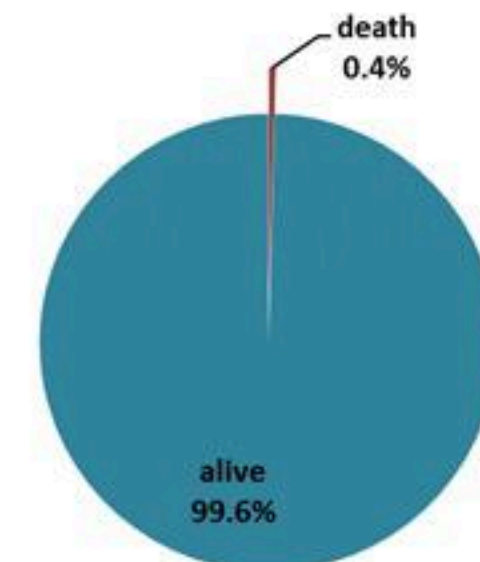
By locality (confirmed cases)



By age group
(suspected and confirmed cases)



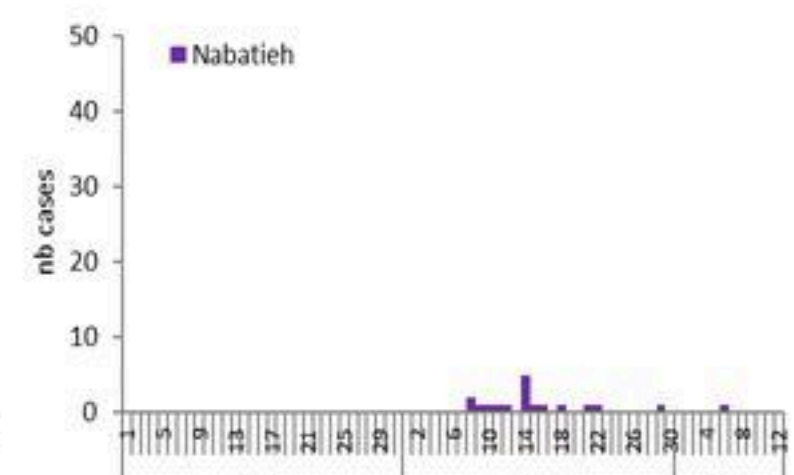
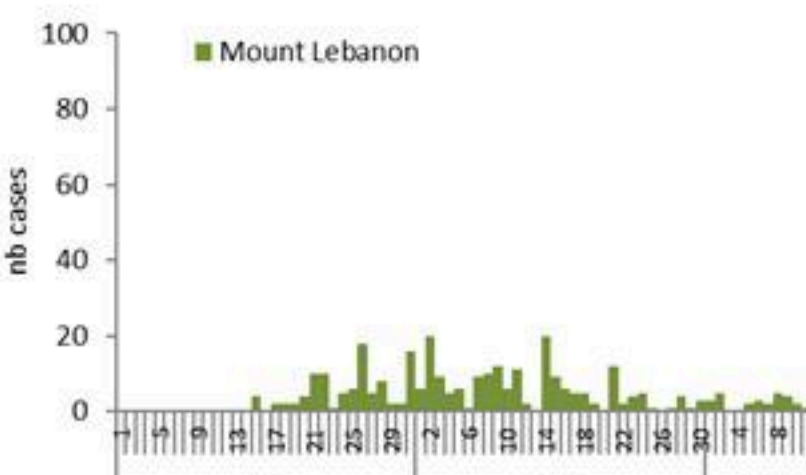
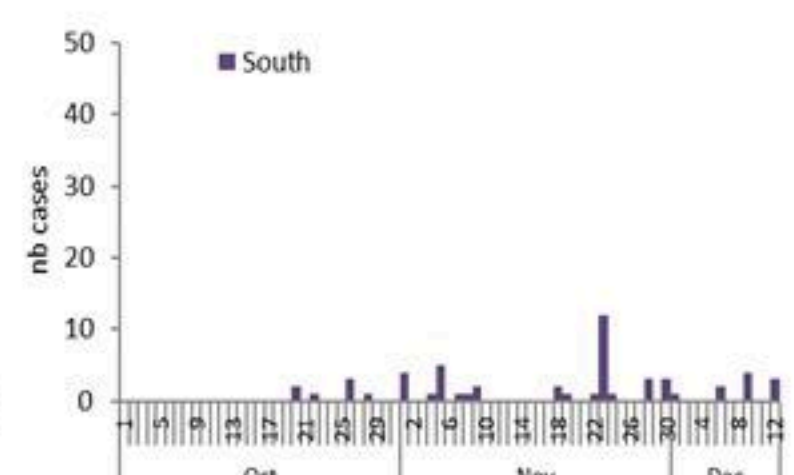
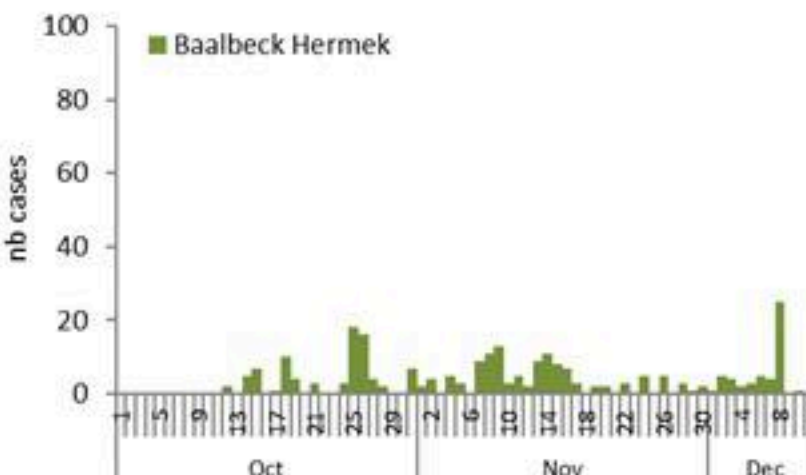
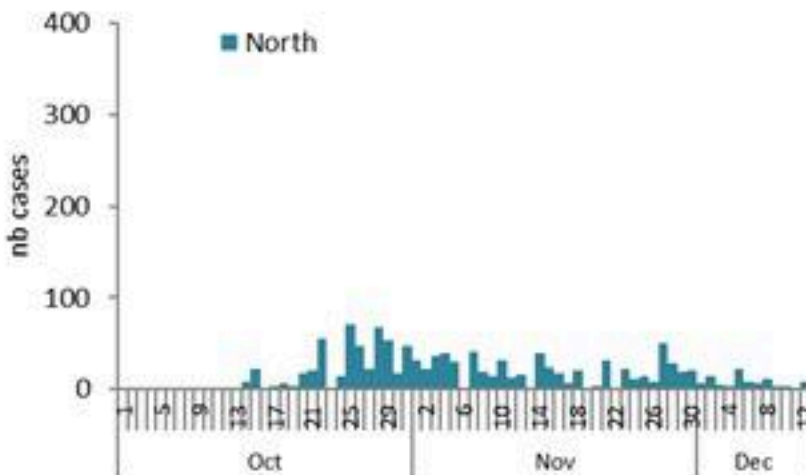
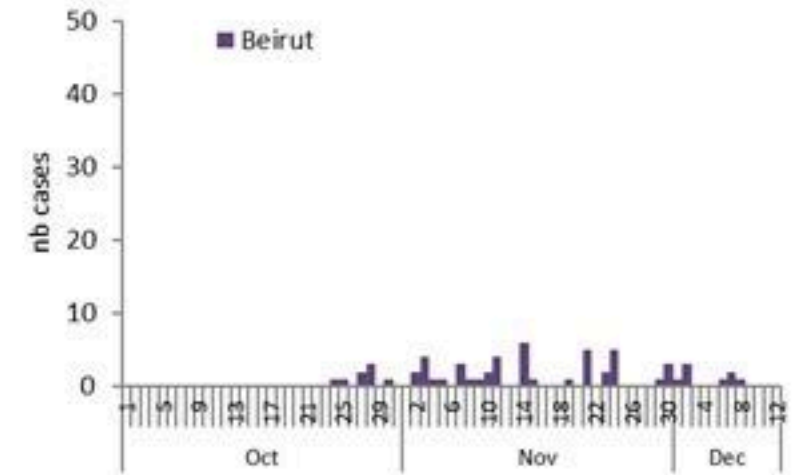
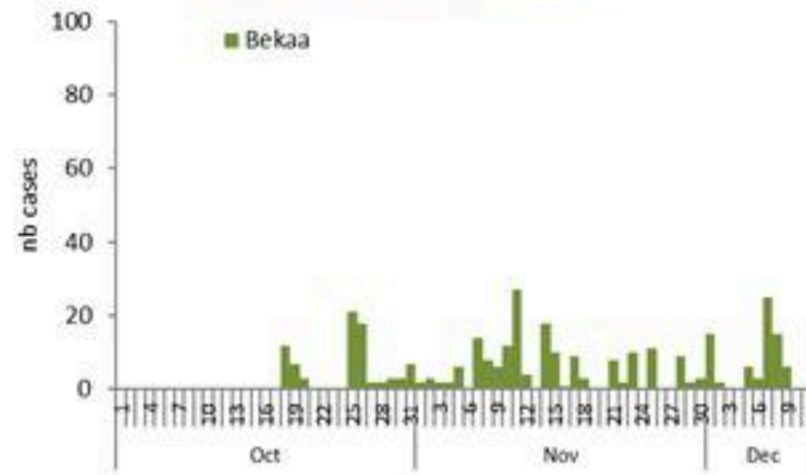
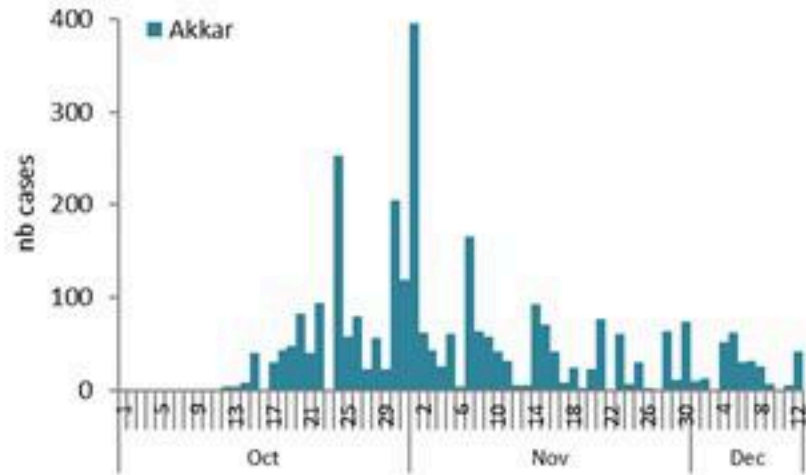
By Outcome
(suspected and confirmed)



Cholera Surveillance Report

13 Dec 2022

Epicurves by date of reporting by province (suspected and confirmed)



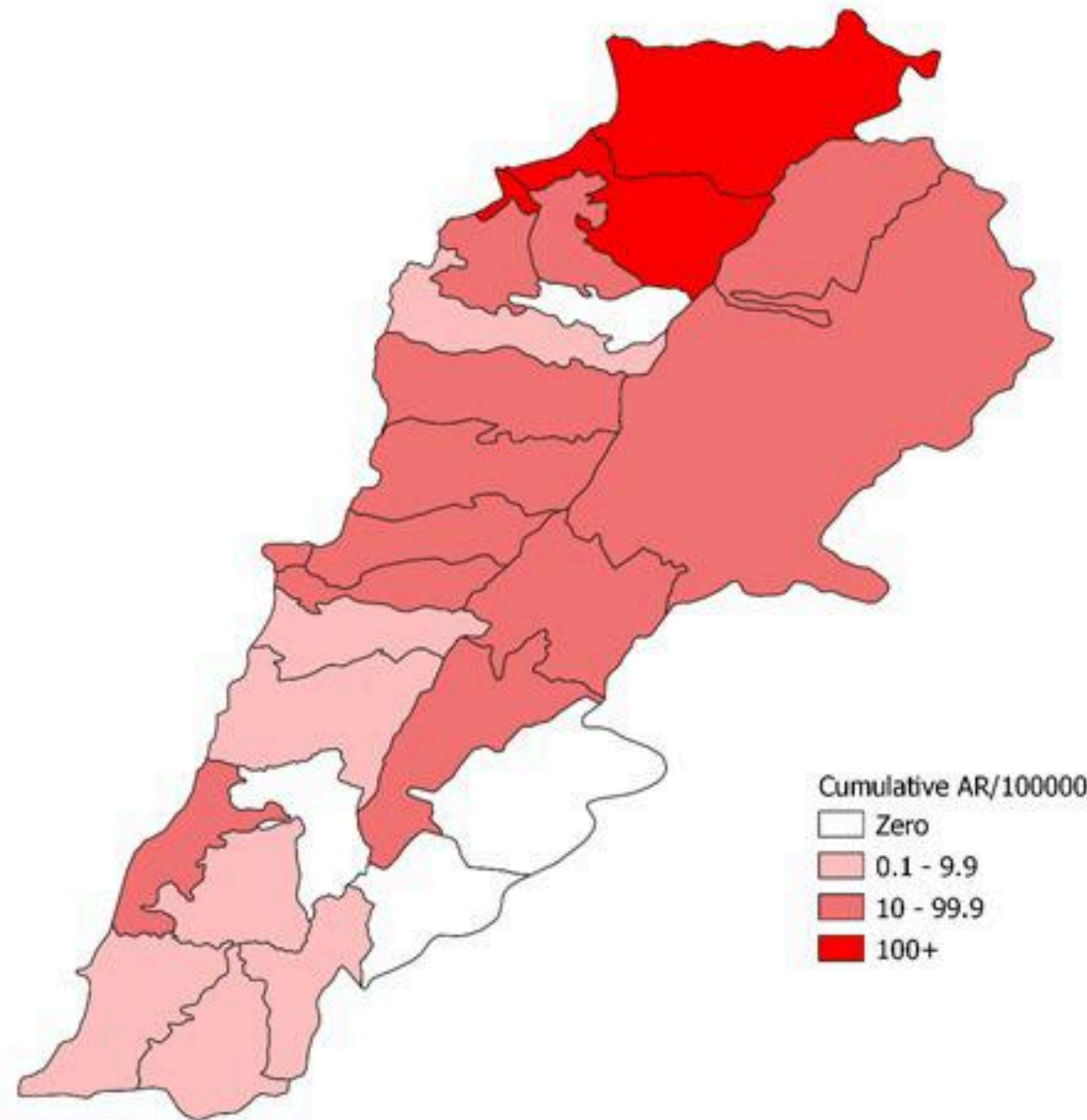
Cholera Surveillance Update

13 Dec 2022

4

Cumulative Attack Rate per 100,000 (suspected and confirmed)

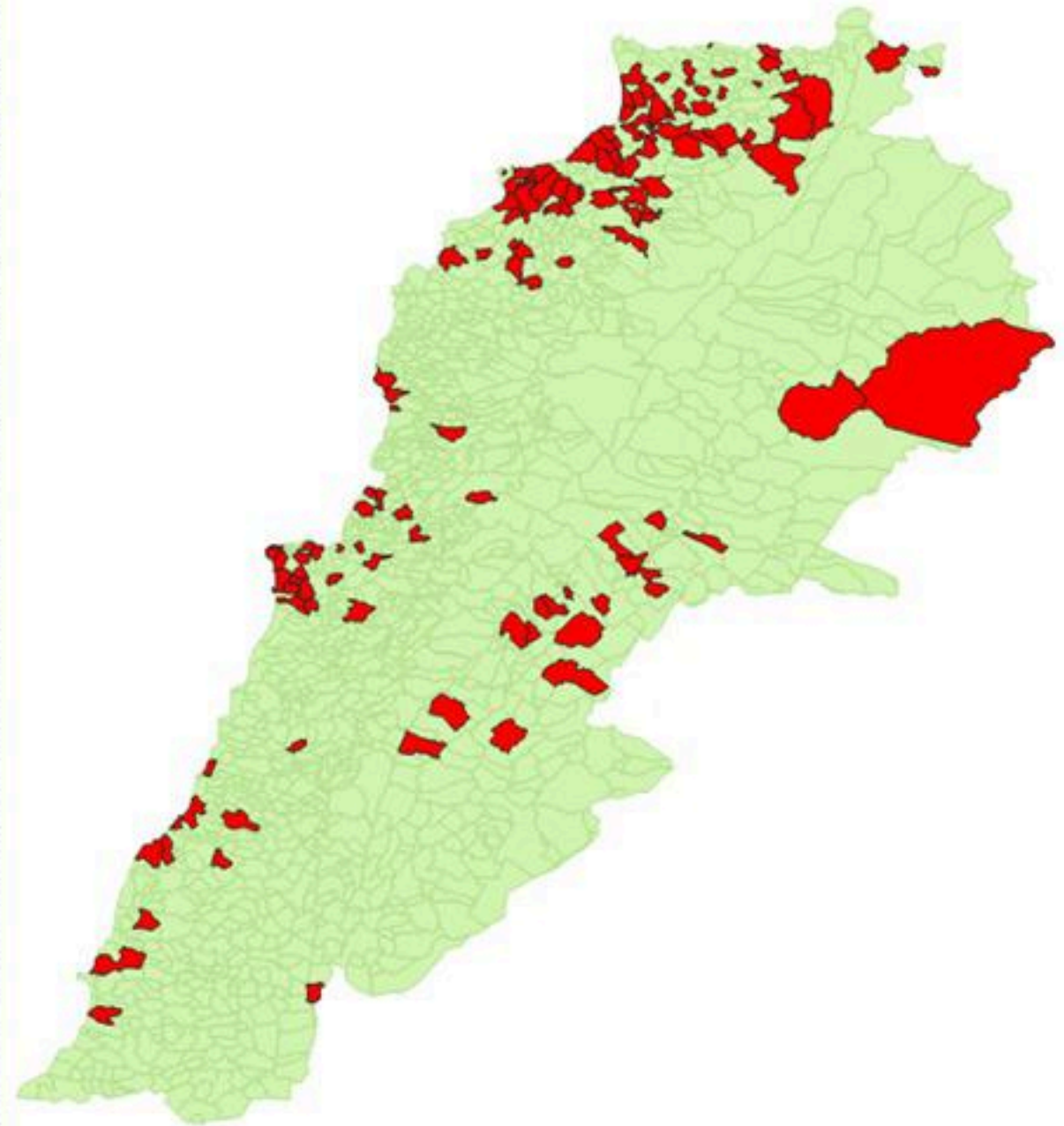
نسبة الحدوث التراكمية لكل مئة ألف نسمة (الحالات المشتبهية والمثبتة)



Cholera Surveillance Update

13 Dec 2022

By locality (confirmed)
حسب البلدة (المتبئة)



Figures in table are subject to modification following updates and data correction

Caza	Locality	Cases	Caza	Locality	Cases	
Akkar	Akkar Atika	1	Kiswan	Aintouna	1	
	Amayer/Quadi Khaled	1		Balfounh	1	
	Arqa / Marlayet Haddara	2		Bqatouta	7	
	Bebrine / Baddoua	160		Ghair	2	
	Belt Hajj/Koucha/Khreibit Jindi	3		Jounieh Ghadir	4	
	Berqayel	1		Jounieh Sarba	4	
	Bezbina	1		Yahchouch	1	
	Birch	2		Zouk Mosbeh	3	
	Bqerzla	1		Koura	Aaba	1
	Chelikh Ayache / Chir Hmairine	1			Aahdiq	1
	Dahr Qambar /Hokr Qatfeh	1			Basa	1
	Dabadab	1	Bsama		1	
	Dinbou	2	Dahr Ain / Ras Maqoua		1	
	Fneydek	1	Rachdibbine		1	
	Halba	1	Kfar Aqa		1	
	Hayssa	1	Aadayssah		1	
	Hocouich	1	Marjoun		Biklaya	1
	Jdeidat Qaytee	3			Broummiana	1
	Kfar Harra	4		Bsalim	1	
	Kfar Melki	1		Daouna/Borj Hammoud	2	
	Khane Hayat	1		Mansourieh	3	
	Khirbet Char	2	Zalqa	1		
	Kneisset Hnaldar	1	Minieh Danieh	Aadoua	1	
	Kouchra	1		Assoun	4	
	Kouekhat	2		Ain El Tineh	1	
	Machha	2		Bahsa	1	
	Majdala	2		Bakhaadun	4	
	Memneaa	1		Bhanine / Zouk Bhanine	7	
	Mhamarah / Nahr Bared / Abdeh	22		Bamaa	6	
	Minlara	3		Douniya	1	
	Mqyatea	1		Kfar Chollane	2	
	Ouadi Jamous	11		Kfar Habou	1	
	Qaabrine / Tal Hayat	7		Makabla	2	
	Qbalyat	1		Minieh	18	
	Qjayat Akkar	2		Qoualyeh	1	
	Qobet Chamra	17		Qattine	3	
	Rahbeh	1		Rihanieh	35	
	Ransiyeh / Deir Dalloum	1	Sir Damiieh	5		
	Saadine	4	Saïda	Raqqoun	1	
	Tell Abbas Charqui	2		Bissariyeh	1	
Tieil	1	Gharieh		2		
Zouq Haddara	1	Khawayb		3		
Zouq Hosniah	3	Saïda		1		
Aley	Aley	1	Sour	Sawfand	1	
	Hay Selloum/Chouefat	1		Abbasiyeh	1	
Baabda	Ain Roummaneh	1	Sour	Deir Qanoun Ain	4	
	Borj Brajneh	3		Badawi	16	
	Ghbayreh/Chiyah/Sabra	2	Mina	7		
	Hadath	3	Qobbah	21		
	Haret Hreik	1	Tripoli Bab Raml	1		
	Kfar Chima	1	Tripoli Gardans	1		
	Mrejjih	1	Tripoli Maddatine	1		
Baalbeck	Arsal	27	Tripoli Nour	1		
	Kfar Dabache	2	Tripoli Souayqa / Assan	3		
	Khodr	2	Tripoli Tabbaneh	20		
	Temnine Faouqa	1	Tripoli Zaitoun	15		
	Temnine Tahta	9	West Beqaa	Kamad Jouz	1	
Younine	1	Kouaya		1		
Batroun	Chikka	1	Zahleh	Saghbine	1	
	Achrafieh	2		Aali Nahri	2	
Beirut	Ain Mraissch	1	Bar Elias	2		
	Hamra	1	Dalhameh	1		
	Mdaouar / Mar Mikhael	1	Harouch Mandra	1		
	Msaïtbeh	1	Hawch Ormani	7		
	Chouf	Zaarouriyeh	1	Majdal Anjar	1	
Amchit		1	Qob Elias	9		
Ehmej		1	Raait	11		
Jbeil		1	Saïdayd	11		
Mastita		2	Tadabaya	2		
Jbel	Zghorta	Zghorta	Zahleh Madaka	2		
			Aalma	1		
			Andeh	1		
			Kfar Draqous	2		
			Majdalya Zghorta	7		
Jbel	Zghorta	Zghorta	Mirata / Faour	3		
			Sebwal	1		
			Zghorta	5		

Cholera weekly incidence rate/100,000

