

2024
06 May



Republic of Lebanon—Ministry of Public Health
 Acute Flaccid Paralysis & Poliovirus Surveillance Indicators

Worldwide (www.polioeradication.org)

Globally, last week — Wild Poliovirus WPV1 was detected in Afghanistan (2 ES).
 Last week positive findings, circulating Vaccine Derived Poliovirus cVDPV2 was detected in Niger (1 ES), Nigeria (2 AFP) and Yemen (3 AFP).

Table (1): Worldwide Polio positive samples

Virus	Sources	Cumulative 2023	Cumulative 2024	Last week	Notes
WPV1	AFP	12	4	0	Pakistan, Afghanistan
	ES/Other	187	124	2	
cVDVP1	AFP	134	1	0	Madagascar
	ES	91	0	0	
	Other	7	0	0	
cVDPV2	AFP	390	26	5	Last week: Niger, Nigeria, Yemen
	ES	334	46	3	
	Other	133	13	0	

AFP Acute Flaccid Paralysis case, ES Environmental Surveillance

Lebanon — Summary indicators

Lebanon — During the past 2 weeks, 3 new cases were reported from the Akkar (1), North (1) and Mount-Lebanon, all aged 5-9 y, and vaccinated. As cumulative, 28 AFP cases were reported from 8 provinces. No poliovirus (wild or vaccine-derived) was detected.

Table 2: National indicators for AFP surveillance, 2024

Indicator	Value	Target
AFP last week (nb)	3	1+
Total AFP (nb)	28	
Annualized NP AFP rate (/100000)	4.84	2+
Specimen adequacy (%)	89.3%	80+
Notification within 7 d (%)	85.7%	80+
Investigation within 48h (%)	100.0%	80+
Zero dose AFP (6m-59m) (nb)	0	
NPEV among specimens (%)	0.0%	10+
Sabin virus (nb)	0	-
Vaccine Derived Poliovirus (nb)	0	0
Wild Poliovirus (nb)	0	0
Final classification (nb)	17	-

Table 3: AFP/Polio surveillance indicators by province

Province	AFP cases, 2024					Zero reporting		Environmental surveillance, 2023			
	AFP (n)	NP AFP rate (/100000)	Adequacy (%)	Notified in 7 d (%)	Zero dose	Nb received reports	% Completeness	Sep	Oct	Nov	Dec
North	6	7.6	83%	100%	0	364	95%	NPEV/SL3	SL1/3	NPEV/SL3	NPEV/SL3
Akkar	2	3.7	100%	100%	0	272	100%				
Bekaa	3	4.6	67%	33%	0	158	99%	NPEV/SL1/3	SL1/3	SL3	SL3
Baalbeck Hermel	3	6.7	100%	100%	0	287	100%				
South	2	2.7	50%	50%	0	715	97%				
Nabatieh	2	4.8	100%	50%	0	256	94%	SL3	NPEV/SL3	NPEV/SL3	NPEV/SL3
Beirut	4	15.2	100%	100%	0	80	100%	NPEV/SL3	SL1/3	NPEV/SL1/3	SL3
Mount Lebanon	6	3.1	100%	100%	0	186	97%				

Table 4: Indicators by district, 2024

District	AFP	Rate/100,000	Adequacy
Caza			
Akkar	2	5.14	100%
Aleyh	2	7.89	100%
Baabda	1	2.11	100%
Baalbeck	2	9.58	100%
Batroun	0		
Becharreh	0		
Beirut	4	16.39	100%
West Bekaa	1	9.68	100%
Bint Jbeil	0		
Chouf	0		
Hasbaya	0		
Hermel	1	31.21	100%
Jbeil	1	9.75	100%
Jezzine	0		
Kesrwan	0		
Koura	1	12.62	0%
Marjeoun	0		
Minieh Danieh	2	15.25	100%
Metn	2	4.90	100%
Nabatieh c	2	11.33	100%
Rashaya	0		
Saida	2	6.17	50%
Sour	0		
Tripoli	2	8.71	100%
Zahleh	2	8.70	50%
Zghorta	1	12.14	100%

Fig 1: AFP cases by week, 2024

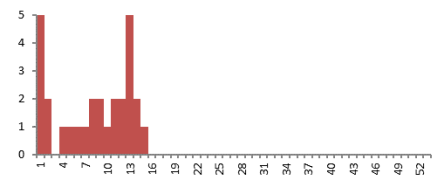


Table 3: Indicators by nationality, 2024

Population	AFP (n)	Annualized rate /100000	Specimen adequacy (%)	Notified within 7 d (%)
Resident	24	6.18	92%	92%
Palestinian	0	0.00	-	-
Syrian	4	2.55	75%	50%