



مقدمة

إن الثقة التي يوليها المواطن للسياسة الصحية العامة تعتمد أولاً ، وقبل المستندات ، على مدى الشفافية المعتمدة في التعامل على مختلف المستويات الصحية، من خدمات وقائية أو علاجية أو من حيث التعامل مع المواطنين، مروراً بإنتاج المعلومات.

تعتبر المعلومات حقاً لكل مواطن، لذلك وجرياً على عاداتها في كل عام ، واضطلاماً بدورها القيادي في الرعاية الصحية، تصدر وزارة الصحة العامة تقريرها الإحصائي السنوي ، متخذاً من الأرقام الإحصائية منطلقاً لسياسة صحية رشيدة مبنية على الحقائق والبراهين العلمية.

بشكل عام، تعتمد وزارة الصحة العامة إلى إنتاج المعلومات المتعلقة بالخدمات التي تقدمها من ضمن مسؤولياتها وصلاحتها على الأراضي اللبنانية كافة، إلا أن الأرقام قد تكون غير ذات معنى إن لم تقترن بالمجموعة من السكان متلقي الخدمات، أو الذين هم محمولون الاستفادة من تلك الخدمات. في هذا الإطار نعمل إلى تقدير أعداد المواطنين في نطاق خدمات الوزارة وذلك في غياب التعداد السكاني الضروري لتلك الغاية مما يجعل التقديرات غير دقيقة في بعض الأحيان مع التغيرات الحاصلة على صعيد التزوج الداخلي والهجرة، إلا أنها تبقى الوحيدة المتوفرة ؛ كما إنها تخضع على الدوام إلى عملية تنقيح وتصويب وتحديث مستعنيين لذلك بالمسوح الأسرية التي تجريها دورياً إدارة الإحصاء المركزي حتى تتمكن من إبعاد الشك عن دقتها وتفصيلها، من خلال تقريبها إلى الواقع.

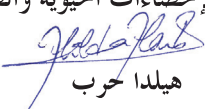
مما لا شك فيه، إن أدق المعلومات هي التي تنتج من أنظمة الترخيد إذ أنها تركز على السرعة في رصد الحدث بغية معالجته بالوقت المناسب. فبالإضافة إلى نظام الترخيد الوبائي القائم، استحدثت الوزارة مرصد وفيات الأمهات والمواليد في بداية العام ٢٠١١ بحيث يتم الآن رصد جميع وفيات الأمهات والمواليد والنشوهات الخلقية وأسبابها والتحقق منها لتفاديها وإيجاد السبل المثلى للوقاية منها.

أما في ما يتعلق بالإفناق الصحي والحسابات الصحية الوطنية، فهي بحاجة إلى تحديث بانتظار صدور الدراسة الجديدة للأحوال المعيشية للأسر والتي تتضمن بعض الأسئلة عن الإفناق الصحي الخاص والمباشر الضروريين لإنتاج مثل هذه الحسابات، على أمل أن نستطيع تحديث حسابات الإفناق الصحي في نشرة العام المقبل.

إن السياسات الصحية تبقى نتيجة حتمية لتضافر جهود الشركاء في القطاع الصحي، من ممولي الخدمات، إلى مقدميها ومتلقيها، إلى منتجي الإحصاءات الصحية و مستخدميها. ففي كل المجتمعات تتضاعف حاجات الصحة بالتوازي مع ما يطرأ على حياة المواطنين من تنوع، مما يحتم على أنظمة المعلومات مواكبة هذا التطور.

نذكر بأن هذه النشرة تعرض أيضاً على موقع وزارة الصحة الإلكتروني www.moph.gov.lb، كما نشجع الجميع على زيارة هذا الموقع دورياً لأهمية المواضيع المنشورة عليه وتعددها، ولمساهمته الكبيرة في تعميم المعرفة الصحية وتعزيز الشفافية والشراكة.

رئيسة دائرة الإحصاءات الحيوية والصحية


هيلدا حرب

	Page
Foreword	
Table of Contents	
Summary Tables	
Table 1: Selected Indicators of Lebanon, 2009-2011	3
Table 2: MOPH Itemized Budget for the Past Three Years (Thousands LBP*)	4
Population Data	
Table 3: Number of Registered Births By Month and Qada, 2011	5
Table 4: Number of Births That Have Occurred and Were Registered in 2011, By Qada	6
Table 5: Number of Registered Deaths By Month and Qada, 2011	7
Table 6: Resident Population* Distribution By Mohafaza and Qada, 2004-2011	8
Table 7: Resident Population* Distribution By Age Group and Gender, 2011	9
Table 8: Resident Population* Distribution By Age Group and Qada, 2011	10
Table 9: Resident Population* Distribution By Age Group, Qada, and Some Basic Indicators, 2011	11
MOPH In-Patient Services Utilization Data	
Graph 1: Number of Hospitals Contracting With The MOPH By Mohafaza and Type, 2011	12
Graph 2: Number of Subsidized In-Patients by Qada of Origin and Hospital Location, MOPH 2011	13
Graph 3: Number of MOPH Patients by Qada of Origin and Type of Hospital, 2011	14
Graph 4: Number of Admissions by Type of Hospital and Location, MOPH 2011	15
Graph 5: The Evolution of MOPH Subsidized Admissions in Public and Private Hospitals Between 2005 and 2011	16
Graph 6: MOPH Subsidized Admissions By ICD10 Categories of Diagnosis, 2011	17
Table 10: MOPH Subsidized Hospital Admissions By Categories of Diagnosis and Gender, 2011	18
Graph 7: MOPH Subsidized Admissions by Category of Diagnosis and Gender, 2011	25
Graph 8: Number of Diagnoses, Number of Patients, and Morbidity per Patient By Qada, 2011	26
Graph 9: Percent Hospitalized Morbidities Among Eligibles By Age Group and Gender, 2011	27
Graph 10: Percent Population Hospitalized Among Eligible Population By Qada, 2011	28
Epidemiology	
Graph 11: Number of Hospitalized Cases of Diabetes By Qada, 2011	29
Graph 12: Cases of Neoplasms Subsidized by the MOPH By Age and Gender, 2011	30
Graph 13: The Trend in MOPH Subsidized Hospitalized Cases of Neoplasms By Age Group, 2006-2011	31
Graph 14: The Trend in MOPH Subsidized Hospitalized <i>Male</i> Cases of Neoplasms By Age Group, 2006-2011	32
Graph 15: The Trend in MOPH Subsidized Hospitalized <i>Female</i> Cases of Neoplasms By Age Group, 2006-2011	33
Graph 16: Percent Breast Ca out of total Female Neoplasms by Qada, 2011	34
Graph 17: Hospitalized Cases of Malignant Neoplasms of the Breast by Age, 2010-2011	35
Graph 18: MOPH Subsidized Hospitalized Cardiovascular Cases By Gender and Age Group, 2011	36
Graph 19: MOPH Subsidized Hospitalized Cardiovascular Cases By Gender and Qada, 2011	37
Graph 20: Number of MOPH Subsidized Open Heart Surgeries By Category, 2011	38
Table 11: HIV/AIDS Incidence in Lebanon, 2011	39
Vaccination	
Table 12: National Immunization Coverage Rates For Polio by Qada, 2011	40



Diseases' Surveillance Data	
Table 13: Cases of Notifiable Diseases Reported to The MOPH Surveillance Unit By Month, 2011	41
Table 14: Cases of Notifiable Diseases Reported to The MOPH By Age Groups and Gender, 2011	42
Table 15: Cases of Notifiable Diseases Reported to The MOPH By Region, 2011	43
Maternal Neonatal Mortality Notification System (MNMNS)	
Table 16: Maternal Neonatal Mortality Notification System Statistics by Qada, 2011	44
Medication for Chronic Illnesses Program: the YMCA Records	
Graph 21: Cumulative Number of Beneficiaries of the YMCA Chronic Drugs Program by Age and Gender, as on December 2011	45
Graph 22: Cases of Chronic Conditions*, 2006-2011	46
Graph 23: Percent Prevalence of Chronic Conditions Among Users, YMCA 2011	47
Graph 24: Number of Socio-medical Centers and Number of Beneficiaries Per Center by Mohafaza YMCA, 2011	48
Graph 25: Proportions of Co-Morbidities in Patients Suffering from Chronic Conditions, YMCA 2011	49
Drug Dispensing Center Records	
Graph 26: Total Number of Patients Benefiting from the Drug Dispensing Center and New Cases by Mohafaza, 2011	50

For comments and suggestions,
Kindly contact:

Hilda Harb

Head of Statistics Department
Ministry of Public Health

Beirut, Lebanon
Tel: 01-611390
E-mail: hharb@moph.gov.lb

Table 1: Selected Indicators of Lebanon, 2009-2011

	Unit	2009	2010	2011	Latest figures (year)
Demographic Indicators					
Population Estimate*	1000 citizens	3,891	3,962	4,036	4,036 (2011)
Number of Births		88,206	91,795	97,887	97,887 (2011)
Number of Deaths		20,858	21,441	23,257	23,257 (2011)
Crude Birth Rate	per 1000 mid year pop	22.8	23.2	24.3	24.3(2011)
Crude Death Rate	per 1000 mid year pop	5.4	5.4	5.8	5.8 (2011)
Population Growth Rate		1.7	1.8	1.8	1.8 (2011)
Population by Age					
	< 15 percent	24.8	24.6	24.6	24.6 (2011)
	65+ percent	9.8	9.8	9.7	9.7 (2011)
Dependency ratio		52	52	52	52 (2011)
Unemployment Ratio (for ages 15-64)		6.4			6.4 (2009)
Total Fertility Rate					1.9 (2004)
Budgetary Resources Indicators					
Total GDP	Billion Leb. Pounds	52,235	55,965		55,965(2010)
Allocated to MOPH from Total Gov Budget	percent	2.7	2.5	2.7	2.7 (2011)
Annual Budget of MOPH	Billion Leb. Pounds	439.7	486.7	527.9	527.9 (2011)
Annual Budget of MOPH per capita	\$US	73.3	82	87	87 (2011)
National Health Expenditure per capita	\$US				460 (2005)
National Health Expenditure as % GDP	percent				8.3 (2005)
Manpower and Physical Resource Indicators					
	per 10,000 population				
Physicians		35.4	30.7	32	32.0 (2011)
Dentists		13.3	14.3	14.7	14.7 (2011)
Pharmacists		12.2	14.6	15.7	15.7 (2011)
Nursing and Midwifery Personnel		22.2	23.3	27.2	27.2 (2011)
Hospital Beds		34.5	34.5	34.5	34.5 (2011)
Coverage with Primary Health Care Indicators					
Infants Fully Immunized-DPT	Percent Immunized	96	94	95	95 (2011)
Infants Fully Immunized-OPV	Percent Immunized	93	94	96	96 (2011)
Infants Fully Immunized-Measles	Percent Immunized	93	95	98	98 (2011)
Infants Fully Immunized-Hepatitis B	Percent Immunized	96	94	95	95 (2011)
Population with Access to Safe Drinking Water	percent				100 (2004)
Married Women Using Contraceptives	percent	54			54 (2009)
Health Status Indicators					
Infant Mortality Rate	per 1000 Live Births	9			9 (2009)
Less than five mortality rate	per 1000 Live Births	10			10(2009)
Maternal Mortality Ratio	per 100,000 Live Births			25	25 (2011)
Selected Morbidity Indicators					
	Number of Notified Cases 2011				
Cholera		0	0	0	0
Polio		0	0	0	0
Measles		23	11	9	9
Diphtheria		0	0	0	0
Tetanus		2	2	2	2
Neonatal Tetanus		1	0	0	0
Malaria		47	66	83	83
AIDS		23	21	37	37
Sources of Information					
Maternal Neonatal Mortality Notification System, 2011					
Central Administration for Statistics (CAS)		PapFam 2004, MOSA/CAS			
Expanded Program on Immunization, MOPH		Economic Accounts of Lebanon 2010- Presidency of the Council of Ministers			
Estimated Population from the 2004 and 2007 Household surveys (CAS) in addition to Registered Births and Deaths at Dept of Statistics		MICS3, 2009. CAS/UNICEF.			
NHA 2004-2005	National AIDS Program (NAP)	Syndicate Figures			
Epidemiological Surveillance Unit	Malaria Control Program, MOPH	ارقام الموازنة العامة Government Budget			

* Excluding Palestinian Camps which gather around 227,000 residents according to UNRWA latest figures.



Table 2: MOPH Itemized Budget for the Past Three Years ('000 LBP)

	2011	2010	2009	موازنة وزارة الصحة العامة بحسب بنودها الثلاثة سنوات الأخيرة (بالآلاف الليرة)
Hospitalization in private sector	330,000,000	320,000,000	305,000,000	تفقات المستشفى في القطاع الخاص
Public Hospitals	12,000,000	12,000,000	12,000,000	مستشفيات حكومية
Drugs	110,000,000	91,000,000	66,000,000	أدوية
Contributions to NGOs	12,817,770	12,817,770	12,817,770	مساهمات للقطاع غير الحكومي
Salaries and other employees' benefits	27,433,500	27,472,900	27,522,100	المخصصات والرواتب والأجور
Other Expenses	19,690,039	18,593,039	13,936,228	نفقات أخرى
Central Laboratory (Part One)	925,500	977,500	948,500	المختبر المركزي جزء أول
Part Two (Central Lab+MOPH)	15,007,000	3,797,000	1,523,000	الجزء الثاني (وزارة الصحة + المختبر المركزي)
Total MOPH Budget	527,873,809	486,658,209	439,747,598	مجموع موازنة وزارة الصحة العامة
Total Government Budget	19,773,000,000	19,537,600,000	16,304,000,000	مجموع الموازنة العامة
Government Debt	5,776,000,000	6,860,120,314	6,441,000,000	ديون متوجبة الأداء
Total Government Budget Excluding Debt	13,997,000,000	12,677,479,686	9,863,000,000	مجموع الموازنة العامة بدون الديون المتوجبة
MOPH Budget out of Total Government Budget (with debt)	2.67	2.49	2.70	نسبة موازنة وزارة الصحة إلى الموازنة العامة مع الديون
MOPH Budget out of Total Government Budget (without debt)	3.77	3.84	4.46	نسبة موازنة وزارة الصحة إلى الموازنة العامة بدون خدمة الدين

Source: Government Budget 2009, 2010, 2011

المصدر: الموازنة العامة، 2009-2010-2011

The total government budget had almost leveled between 2010 and 2011, while the MOPH budget increase was about 8.5%. The hospitalization coverage which used to consume 72% of the MOPH budget in 2009, forms now about 62% of the budget. On the other hand, the budgeted amount for drugs is increasing year after year, and has increased from 15% to 18% to 21% of the budget between 2009, 2010 and 2011, respectively.

There were registered and reported 97,887 births in Lebanon during the year 2011. It is worth noting that data flaws are expected. There is a delay in registration which might affect the accuracy of the number given in a year. In addition, there should always be consideration for the births occurring abroad and are yet registered which overestimates the actual resident births.

Table 3: Number of Registered Births By Month and Qada, 2011

Qada	January	February	March	April	May	June	July	August	September	October	November	December	Total
Akkar	1169	824	969	873	882	940	841	853	977	885	815	856	10884
Aley	168	119	165	256	156	178	209	174	180	169	141	119	2034
Baabda	212	132	153	181	146	138	176	212	207	196	125	150	2028
Baalback	963	749	833	297	791	777	907	734	987	815	750	678	9281
Batroun	80	92	99	87	141	133	96	89	105	148	67	114	1251
Beharri	149	91	107	118	179	158	109	100	87	94	64	133	1389
Begaa gharbi	296	202	287	205	232	216	281	217	222	241	154	218	2771
Bint jbeil	485	293	367	338	393	338	366	330	640	373	305	378	4606
Chouf	390	315	361	334	365	306	352	376	436	354	288	308	4185
Hasbaya	85	107	56	81	100	104	115	120	91	88	75	119	1141
Hermel	156	148	210	123	125	158	119	136	190	174	123	170	1832
Jbeil	163	128	118	118	125	132	154	136	166	165	116	130	1651
Jejzine	110	54	75	81	87	111	95	72	102	119	85	85	1076
Kesserouan	116	98	131	109	145	148	135	141	140	131	116	106	1516
Koura	124	66	84	99	109	93	84	75	119	117	127	88	1185
Marj3yon	351	272	258	273	248	311	321	283	344	345	815	276	4097
Meneh-dennieh	360	311	437	418	430	377	343	340	393	480	141	396	4426
Metn	143	129	136	154	137	155	155	177	208	163	126	139	1822
Nabatieh	220	141	170	139	143	150	168	171	196	88	164	186	1936
Rachaya	175	100	116	72	160	94	102	85	146	106	61	103	1320
Saida	810	803	769	791	858	783	767	757	799	678	741	915	9471
Sour	532	470	543	489	473	460	440	552	550	511	421	409	5850
Tripoli	588	451	525	552	510	565	591	577	581	362	466	511	6279
Zahle	436	325	347	330	375	348	397	335	445	394	291	313	4336
Zgharta	187	173	273	266	286	155	176	158	190	223	146	122	2355
Beirut	837	720	699	778	843	736	728	732	800	847	684	761	9165
Total	9305	7313	8288	7562	8439	8064	8227	7932	9301	8266	7407	7783	97887



Table 4: Number of Births That Have Occurred and Were Registered in 2011, By Qada

Qadaa	January	February	March	April	May	June	July	August	September	October	November	December	Total
Akkar	762	767	767	700	628	755	778	790	895	838	746	798	9224
Aley	96	104	137	126	127	151	182	170	171	149	139	117	1669
Baabda	79	79	105	118	107	114	148	177	178	166	114	135	1520
Baalback	483	521	550	16	601	571	722	648	852	727	695	638	7024
Batroun	49	46	60	45	78	88	68	73	71	89	57	75	799
Beharri	33	28	26	14	38	46	43	47	40	54	44	50	463
Begaa gharbi	115	100	132	131	146	152	196	162	180	174	131	168	1787
Bint jbeil	152	179	241	225	272	243	280	266	475	304	305	378	3320
Chouf	191	213	271	260	274	286	312	350	375	321	269	266	3388
Hasbaya	85	79	44	70	81	75	85	97	91	88	75	119	989
Hermel	156	119	191	109	116	155	115	133	184	167	121	170	1736
Jbeil	82	91	90	93	108	116	129	123	150	146	111	124	1363
Jezzine	36	37	58	68	70	83	77	61	92	97	74	74	827
Kesserouan	49	63	100	85	110	115	121	122	125	120	114	95	1219
Koura	33	38	52	50	53	64	60	53	90	77	62	62	694
Marjegyoun	146	159	162	181	174	212	239	226	305	291	746	236	3077
Menleh-dennieh	172	237	284	256	247	258	279	288	318	332	271	311	3253
Metn	79	115	118	145	128	144	152	174	206	161	125	133	1680
Nabatieh	162	132	168	135	141	145	166	167	191	88	164	185	1844
Rachaya	47	51	67	53	69	62	65	81	95	73	49	77	789
Saida	488	348	409	361	394	436	325	368	369	360	350	420	4628
Sour	299	293	330	342	381	380	328	451	494	457	378	345	4478
Tripoli	331	351	399	392	327	384	458	430	486	306	415	446	4725
Zahle	201	205	265	266	283	296	329	313	408	262	266	225	3319
Zgharta	34	60	78	51	72	72	88	88	94	92	85	84	898
Beirut	837	720	699	778	843	736	728	732	800	847	684	761	9165
Total	5197	5135	5803	5070	5868	6139	6473	6590	7735	6786	6590	6492	73878

The births of 2011 that were registered in 2011 amount to 73,878. We should not forget, however, that there are still some births that have occurred in 2011 and were not registered yet by the end of the year.



There were 23,257 deaths that were registered and reported during 2011. For the deaths, the same concerns about data flaws of birth reporting and registration stand. With 97,887 births, the Lebanese population has increased by around 75,000 citizens, some of whom might be residing outside the country.

Table 5: Number of Registered Deaths By Month and Qada, 2011

Qadaa	January	February	March	April	May	June	July	August	September	October	November	December	Total
Akkar	179	156	173	123	152	154	125	101	134	142	128	171	1738
Aley	87	86	72	91	78	47	68	76	73	68	81	59	886
Babda	76	64	75	74	65	67	64	50	55	59	49	63	761
Baalback	167	95	117	87	86	108	132	76	32	35	27	38	1000
Batroun	54	46	34	36	41	44	38	38	29	29	41	45	475
Beharrî	23	21	36	26	34	27	17	35	30	30	15	28	322
Begaa gharbi	62	43	51	48	38	46	53	38	30	67	43	44	563
Bint jbell	85	68	75	85	57	51	63	42	59	58	68	94	805
Chouf	143	136	139	137	139	99	111	102	104	105	103	142	1460
Hasbaya	27	23	16	36	20	24	14	11	16	20	28	32	267
Hermel	33	20	30	25	36	28	15	22	23	26	23	26	307
Jbeli	46	56	43	48	33	52	34	50	45	46	42	45	540
Jezzine	34	26	43	38	40	30	18	42	37	34	40	46	428
Kesserouan	78	74	84	61	66	65	58	53	74	57	66	53	789
Koura	47	30	35	24	36	25	24	24	27	33	39	39	383
Marjé3yon	61	70	52	51	54	49	67	37	47	59	128	61	736
Menieh-dennieh	63	69	64	50	78	37	37	48	68	73	61	71	719
Metn	110	104	108	92	98	94	83	82	87	89	81	107	1135
Nabatieh	95	57	73	50	78	61	65	56	79	20	63	71	768
Rachaya	26	28	20	19	28	20	12	30	29	20	27	21	280
Saida	192	179	209	162	165	179	136	151	174	174	169	155	2045
Sour	107	106	94	101	81	81	85	85	97	74	73	99	1083
Tripoli	119	103	119	104	93	122	96	89	109	102	103	117	1276
Zahle	96	93	99	95	97	80	75	75	108	63	107	96	1084
Zghartia	57	43	60	40	37	41	28	33	43	35	41	45	503
Beirut	294	267	269	244	267	279	168	213	214	234	200	255	2904
Total	2361	2063	2190	1947	1997	1910	1686	1659	1823	1752	1846	2023	23257



Table 6: Resident Population* Distribution By Mohafaza and Qada, 2004-2011

Mohafaza	Qaza	Qada %total population 1996	Population 2004	Population 2005	Population 2006	Population 2007	Population 2008	Population 2009	Population 2010	Population 2011	Qada%total population 2011	Qada proportions change between 1996 and 2011	
North	Akkar	6.04	226,732	230,119	233,546	227,247	234,328	241,012	249,642	258,788	6.41	0.37	
	Mtneih Danieh	2.99	112,303	113,971	115,668	112,257	115,004	118,293	121,722	125,429	3.11	0.12	
	Tripoli	6.83	256,360	260,166	264,040	253,606	257,999	262,470	267,159	272,162	6.74	-0.08	
	Zgharta	1.51	56,868	57,712	58,572	55,898	56,638	57,403	58,479	60,331	1.49	-0.02	
	Koura	1.48	55,583	56,408	57,248	54,668	55,077	55,709	56,384	57,186	1.42	-0.06	
	Beitreh	0.53	19,872	20,167	20,468	19,725	20,104	20,541	21,559	22,626	0.56	0.03	
	Baroun	1.09	41,572	42,191	42,191	40,356	40,749	41,793	42,569	43,262	1.05	-0.04	
	Total		20.47	768,702	780,316	789,732	763,322	779,900	796,722	816,739	839,092	20.79	0.32
	Bqaa	Hennel	1.26	47,189	47,890	48,603	49,173	50,796	51,913	53,052	54,577	1.35	0.10
		Baalbeck	5.01	187,992	190,783	193,624	196,461	203,671	211,656	218,285	226,566	5.61	0.61
Zahlh		3.76	143,358	145,593	145,593	145,223	148,384	151,257	154,642	157,894	3.91	0.15	
Rachaya		0.77	28,805	29,223	29,668	30,031	30,710	31,512	32,617	33,657	0.83	0.07	
West Bqaa		1.75	65,860	66,838	67,833	68,477	70,110	72,318	74,709	76,917	1.91	0.15	
Total		12.55	471,205	478,202	485,322	489,865	503,671	518,656	533,305	549,611	13.62	1.07	
Nabatieh		Nabatieh	2.65	99,487	100,964	102,468	110,609	113,244	115,199	116,703	117,871	2.92	0.27
		Harshaya	0.56	21,000	21,312	21,629	23,408	24,223	25,157	26,070	26,944	0.67	0.11
		Marjoun	1.18	44,239	44,895	45,564	50,368	53,408	56,333	59,676	63,037	1.56	0.38
		Bint elbeil	1.52	57,119	57,967	58,830	64,846	68,218	71,703	75,237	79,038	1.96	0.44
	Total	5.91	221,841	225,138	228,490	249,231	259,093	268,392	277,686	286,890	7.11	1.20	
South	Saida	4.90	183,881	186,612	189,390	189,282	196,118	203,010	210,190	217,616	5.39	0.49	
	Sour	5.18	194,622	197,512	200,453	197,907	202,400	206,875	211,691	216,368	5.36	0.18	
	Jerzih	0.60	22,690	23,027	23,370	23,299	23,789	24,458	25,178	25,826	0.64	0.04	
	Total	10.68	401,193	407,151	413,213	410,487	422,307	434,343	446,969	459,810	11.39	0.71	
	Mount Lebanon	Jbeil	2.24	84,039	85,287	86,556	83,594	84,588	85,664	86,659	87,770	2.17	-0.06
Kesrouan		4.39	164,808	167,255	169,745	162,555	163,245	163,843	164,489	165,216	4.09	-0.30	
Mein		12.88	483,783	490,967	498,278	476,979	477,851	478,737	479,510	480,197	11.90	-0.99	
Baalda		12.89	493,973	491,159	498,472	477,299	478,616	480,074	481,423	482,690	11.96	-0.93	
Aley		3.44	129,053	130,970	132,920	128,230	129,484	131,025	132,503	133,651	3.31	-0.13	
Chouf		4.15	155,901	158,216	160,571	155,171	158,457	161,265	164,074	166,799	4.13	-0.02	
Total		39.99	1,501,556	1,523,853	1,546,543	1,484,474	1,492,241	1,500,611	1,508,658	1,516,323	37.57	-2.42	
Beirut		Beirut	10.40	390,499	396,298	402,199	361,366	366,907	372,743	378,464	384,725	9.53	-0.87
		Total	10.40	390,499	396,298	402,199	361,366	366,907	372,743	378,464	384,725	9.53	-0.87
Total Population			100.00	3,755,000	3,810,758	3,867,500	3,759,135	3,824,418	3,891,466	3,961,820	4,036,450	100.00	0.00

*Excluding Palestinian Camps which gather around 227,000 refugees according to the latest UNRWA figures.

It is estimated that in 2011 there were 4,036,450 residents inside the country. The Mohafaza that is populated the most is Mount Lebanon (37.57%) comprising 6 districts, followed by the North (20.79%) with 7 districts. Both Nabatieh and South form 18.5% of the residents of Lebanon with 7 districts, 13.62% of the Lebanese reside in the Bqaa area in 5 districts, and the least populated area is Beirut (9.53%) considering its being a one-district Mohafaza. Calculating the change of population proportions between 1996 and 2011, some districts exhibit a decrease in their populations which are mostly the whole of Mount Lebanon and Beirut and 4 districts in the North, while others have increased over time. According to the latest UNRWA figures, there are 227,000 Palestinian refugees residing inside the camps of Lebanon. Accordingly, there are a total of 4,263,450 inhabitants residing in Lebanon.

There is almost equal distribution of males and females in the total population. The proportions by age group are taken from the household survey 2007 and applied for the year 2011.

Table 7: Resident Population * Distribution by Age Group and Gender, 2011

Age groups	Percent			Population 2011			
	M	F	T	M	F	T	
0-4	3.6	3.3	6.9	145,312	133,203	278,515	
5-9	4.3	4.1	8.3	171,549	163,476	335,025	
10-14	4.9	4.5	9.4	197,786	181,640	379,426	
15-19	5.2	4.5	9.8	211,106	182,448	393,554	
20-24	5.1	4.7	9.8	205,859	189,713	395,572	
25-29	3.9	4.2	8.1	157,422	169,531	326,952	
30-34	3.5	3.8	7.4	142,890	154,192	297,083	
35-39	3.0	3.7	6.7	121,094	149,349	270,442	
40-44	2.7	3.5	6.2	110,195	141,276	251,471	
45-49	2.5	3.0	5.6	102,122	121,094	223,216	
50-54	2.2	2.5	4.8	90,013	100,911	190,924	
55-59	1.8	2.0	3.8	72,656	80,729	153,385	
60-64	1.7	2.0	3.7	68,620	80,729	149,349	
65-69	1.6	1.7	3.2	64,583	68,620	133,203	
70-74	1.4	1.4	2.8	56,510	56,510	113,021	
75-79	1.0	0.9	1.9	40,365	36,328	76,693	
80-84	0.6	0.6	1.2	24,219	24,219	48,437	
85+	0.3	0.2	0.5	12,109	8,073	20,182	
Total	49.4	50.6	100.0	1,994,410	2,042,040	4,036,450	

*Excluding Palestinian Camps which gather around 227,000 refugees according to the latest UNRWA figures.



Table 8: Resident Population * Distribution by Age Group and Qada, 2011

Qada	%	0-4	5-9	10-14	15-19	20-24	25-29	30-34	35-39	40-44	45-49	50-54	55-59	60-64	65-69	70-74	75-79	80-84	85+	Total	
Akkar	6.41	17,856	21,479	24,326	25,232	25,561	20,962	19,047	17,330	16,123	14,311	12,241	9,834	5,775	8,540	7,246	4,917	3,105	1,294	258,788	
MtLebanon	3.11	8,655	10,411	11,790	12,229	12,292	10,160	9,232	8,404	7,814	6,936	5,935	4,766	4,641	4,139	3,512	2,383	1,505	627	125,429	
Trtpolit	6.74	18,779	22,589	25,583	26,536	26,672	22,045	20,031	18,235	16,956	15,051	12,873	10,342	10,070	8,981	7,621	5,171	3,266	1,361	272,162	
Zgharta	1.49	4,163	5,008	5,671	5,882	5,912	4,887	4,440	4,042	3,759	3,356	2,854	2,293	2,252	1,991	1,689	1,146	724	302	60,331	
Koura	1.42	3,946	4,746	5,376	5,676	5,644	4,632	4,209	3,834	3,563	3,162	2,705	2,173	2,116	1,887	1,601	1,087	686	286	151,866	
Beitrouh	0.56	1,561	1,878	2,127	2,206	2,217	1,833	1,665	1,516	1,410	1,251	1,070	860	837	747	634	430	272	113	22,626	
Batroun	1.05	2,957	3,533	4,002	4,151	4,172	3,448	3,133	2,852	2,652	2,254	2,014	1,618	1,575	1,405	1,192	809	511	213	42,569	
Hennel	20.79	1,135	3,766	4,530	5,130	5,321	5,349	4,421	4,017	3,657	3,400	3,018	2,581	2,019	1,801	1,528	1,037	655	273	54,577	
Baalbeck	5.61	15,633	18,805	21,297	22,990	22,203	18,352	16,675	15,180	14,115	12,529	10,717	8,609	8,383	7,477	6,344	4,305	2,719	1,133	220,566	
Zahlé	3.91	10,895	13,105	14,842	15,395	15,474	12,789	11,621	10,579	9,837	8,732	7,468	6,000	5,842	5,211	4,421	3,000	1,895	789	157,894	
Rachaya	0.83	2,322	2,794	3,164	3,282	3,298	2,726	2,477	2,255	2,097	1,861	1,592	1,279	1,245	1,111	942	639	404	168	33,657	
West Beqaa	1.91	5,307	6,384	7,230	7,499	7,538	6,230	5,661	5,153	4,792	4,254	3,638	2,923	2,846	2,538	2,154	1,461	923	385	76,917	
Nabatieh	13.62	2,92	8,133	9,783	11,080	11,492	11,551	9,548	8,675	7,897	7,343	6,518	5,575	4,479	4,361	3,890	3,300	2,240	1,414	589	117,871
Hasbaya	0.67	1,859	2,236	2,533	2,627	2,640	2,182	1,983	1,805	1,679	1,490	1,274	1,024	997	889	754	512	323	135	26,944	
Marjayoun	1.36	4,350	5,252	5,925	6,146	6,178	5,106	4,640	4,223	3,927	3,486	2,982	2,395	2,332	2,080	1,765	1,198	756	315	63,037	
Bint Jbeil	1.96	5,454	6,560	7,430	7,706	7,746	6,402	5,817	5,296	4,924	4,371	3,739	3,003	2,924	2,608	2,213	1,502	948	395	79,038	
Saida	7.11	5.39	15,015	18,062	20,456	21,218	21,326	17,627	16,017	14,580	13,557	12,034	10,293	8,269	8,052	7,181	6,093	4,135	2,611	1,088	217,616
Sour	5.36	14,929	17,959	20,439	21,096	21,204	17,526	15,925	14,497	13,480	11,965	10,234	8,222	8,006	7,140	6,058	4,111	2,596	1,482	216,368	
Jezzine	0.64	1,782	2,144	2,438	2,518	2,531	2,092	1,901	1,730	1,609	1,428	1,222	981	956	852	723	491	310	129	25,826	
Jbeil	11.39	6,056	7,285	8,230	8,538	8,601	7,109	6,460	5,881	5,468	4,854	4,152	3,335	3,247	2,896	2,458	1,668	1,053	439	87,770	
Kesrouan	4.09	11,400	13,713	15,530	16,109	16,191	13,383	12,160	11,069	10,293	9,136	7,815	6,278	6,113	5,452	4,626	3,139	1,983	826	165,216	
Mtbn	11.90	33,134	39,856	45,139	46,819	47,959	38,896	35,342	32,173	29,916	26,555	22,713	18,247	17,767	15,846	13,446	9,124	5,762	2,401	480,197	
Baalbda	11.96	33,306	40,063	45,373	47,622	47,304	39,098	35,526	32,340	30,072	26,693	22,831	18,342	17,860	15,929	13,515	9,171	5,792	2,413	482,690	
Aley	3.31	9,222	11,093	12,563	13,031	13,098	10,826	9,837	8,955	8,326	7,391	6,322	5,079	4,945	4,410	3,742	2,539	1,604	668	133,651	
Chouf	4.13	11,509	13,844	15,679	16,263	16,346	13,511	12,276	11,176	10,292	9,224	7,890	6,338	6,172	5,594	4,670	3,169	2,002	834	166,799	
Beirut	37.57	26,546	31,932	36,164	37,511	37,703	31,163	28,316	25,777	23,968	21,275	18,197	14,620	14,233	12,696	10,772	7,310	4,617	1,224	384,725	
TOTAL	100.00	278,515	335,025	379,426	393,554	395,572	326,952	297,083	270,442	251,471	223,216	190,924	153,385	149,349	133,203	113,021	76,693	48,437	20,182	4,036,450	

* Excluding Palestinian Camps which gather around 227,000 refugees according to the latest UNRWA figures.

It is well worth noting that the baseline population on which the estimates at district level are calculated was drawn from an old Household Survey (1996) which was the only one available at the level of Qada. There is a newer survey, in 2007, that generates de-facto population at the Mohafaza level. Combining the two surveys, we managed to estimate the population at the district level. But, accuracy remains a concern due to the estimation involved.

The Rate of Natural Increase of the Lebanese population is of 1.85. When calculating some indicators at the district level, we have to keep in mind that the household survey generates de-facto population at the time of survey, while the births and deaths, from which the population increase was calculated belong to all Lebanese including the Diaspora; the Crude Birth and Death Rates are overestimated in the districts that experience high rates of internal or external migration. Surveys at the district level are needed to defy or confirm the numbers stated.

Table 9: Resident Population* Distribution by Age Group, Qada and Some Basic Indicators, 2011

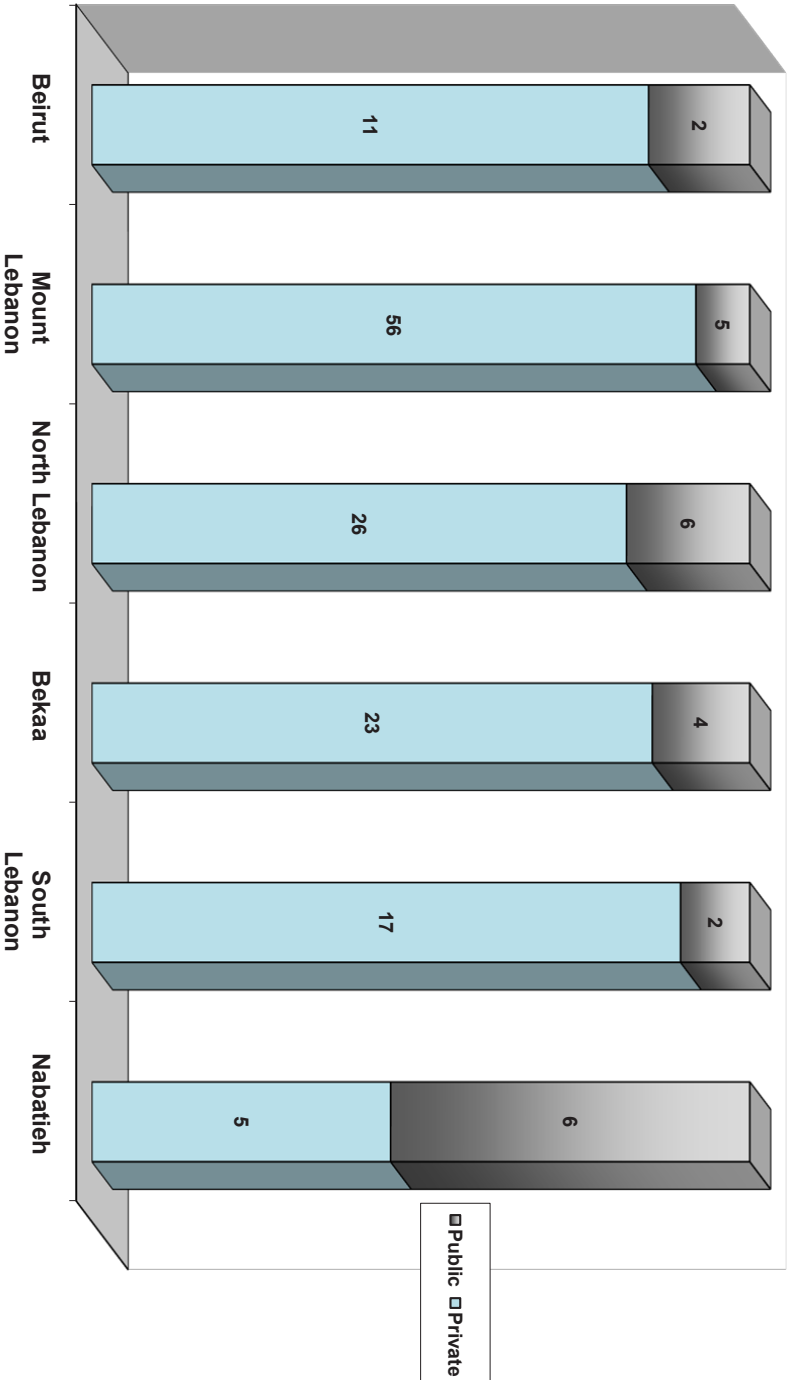
Qada	0-4	5-9	10-14	<15 years	>65years	Active Population**	Total Population	Births	Deaths	CBR	CDR	RNI
Akkar	17,856	21,479	24,326	63,662	25,102	170,024	258,788	10884	1738	42.06	6.72	3.53
Mithel Danieh	8,655	10,411	11,790	30,855	12,167	82,407	125,429	4426	719	35.29	5.73	2.96
Trjoli	18,779	22,589	25,583	66,952	26,400	178,811	272,162	6279	1276	23.07	4.69	1.84
Zgharta	4,163	5,008	5,671	14,842	5,852	39,638	60,331	2355	503	39.03	8.34	3.07
Koura	3,946	4,746	5,376	14,068	5,547	37,571	57,186	1185	383	20.72	6.70	1.40
Bchtrreh	1,561	1,878	2,127	5,566	2,195	14,865	22,626	1389	322	61.39	14.23	4.72
Batroun	2,937	3,533	4,002	10,472	4,129	27,968	42,569	1251	475	29.39	11.16	1.82
Hennel	3,766	4,530	5,130	13,426	5,294	35,857	54,577	1832	307	33.57	5.63	2.79
Baalbeck	15,633	18,805	21,297	55,735	21,977	148,854	226,566	9281	1000	40.96	4.41	3.66
Zahlé	10,895	13,105	14,842	38,842	15,316	103,736	157,894	4336	1084	27.46	6.87	2.06
Rachaya	2,322	2,794	3,164	8,280	3,265	22,113	33,657	1320	280	39.22	8.32	3.09
West Begaa	5,307	6,384	7,230	18,922	7,461	50,534	76,917	2771	563	36.03	7.32	2.87
Nabatieh	8,133	9,783	11,080	28,996	11,433	77,441	117,871	1936	768	16.42	6.52	0.99
Hasbaya	1,859	2,236	2,533	6,628	2,614	17,702	26,944	1141	267	42.35	9.91	3.24
Marjayoun	4,350	5,232	5,925	15,507	6,115	41,415	63,037	4097	736	64.99	11.68	5.33
Birt Jbeil	5,454	6,560	7,430	19,443	7,667	51,928	79,038	4606	805	58.28	10.18	4.81
Saida	15,015	18,062	20,456	53,534	21,109	142,974	217,616	9471	2045	43.52	9.40	3.41
Sour	14,929	17,959	20,339	53,226	20,988	142,154	216,368	5850	1083	27.04	5.01	2.20
Jezzine	1,782	2,144	2,428	6,353	2,505	16,968	25,826	1076	428	41.66	16.57	2.51
Jbeil	6,056	7,285	8,250	21,591	8,514	57,665	87,770	1651	540	18.81	6.15	1.27
Kesrouan	11,400	13,713	15,530	40,643	16,026	108,547	165,216	1516	789	9.18	4.78	0.44
Metn	33,134	39,856	45,139	118,128	46,579	315,489	480,197	1822	1135	3.79	2.36	0.14
Baabda	33,306	40,063	45,573	118,742	46,821	317,127	482,690	2028	761	4.20	1.58	0.26
Alqy	9,222	11,093	12,563	32,878	12,964	87,809	133,651	2034	886	15.22	6.63	0.86
Chouf	11,509	13,844	15,679	41,033	16,180	109,587	166,799	4185	1460	25.09	8.75	1.63
Beirut	26,546	31,932	36,164	94,642	37,318	252,764	384,725	9165	2904	23.82	7.55	1.63
TOTAL	278,515	335,025	379,426	992,967	391,536	2,651,948	4,036,450	97,887	23,257	24.25	5.76	1.85

*Excluding Palestinian Camps which gather around 227,000 refugees according to the latest UNRWA figures.

**Active Population: Population between 15-65 years of age regardless of their employment status.



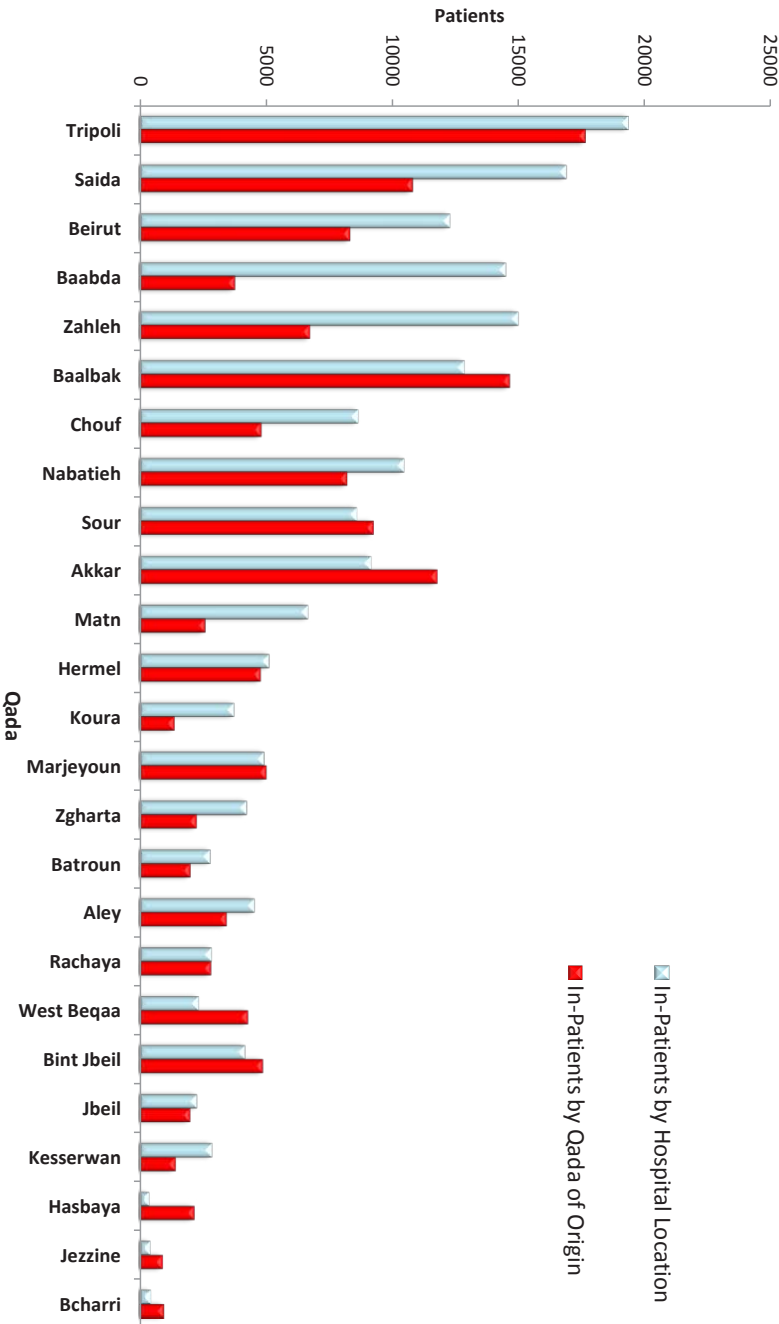
Graph 1 : Number of Hospitals Contracting With The MOPH By Mohafaza and Type, 2011



The Ministry of Public Health contracts with both the public and the private hospitals for the services it pays for with the aim of ensuring universal accessibility to services in an equitable distribution. Accordingly, the MOPH issues contracts with 138 private hospitals where the patient share is 15% of the hospital bill, and 25 public hospitals where the patient pays only 5% of the bill.

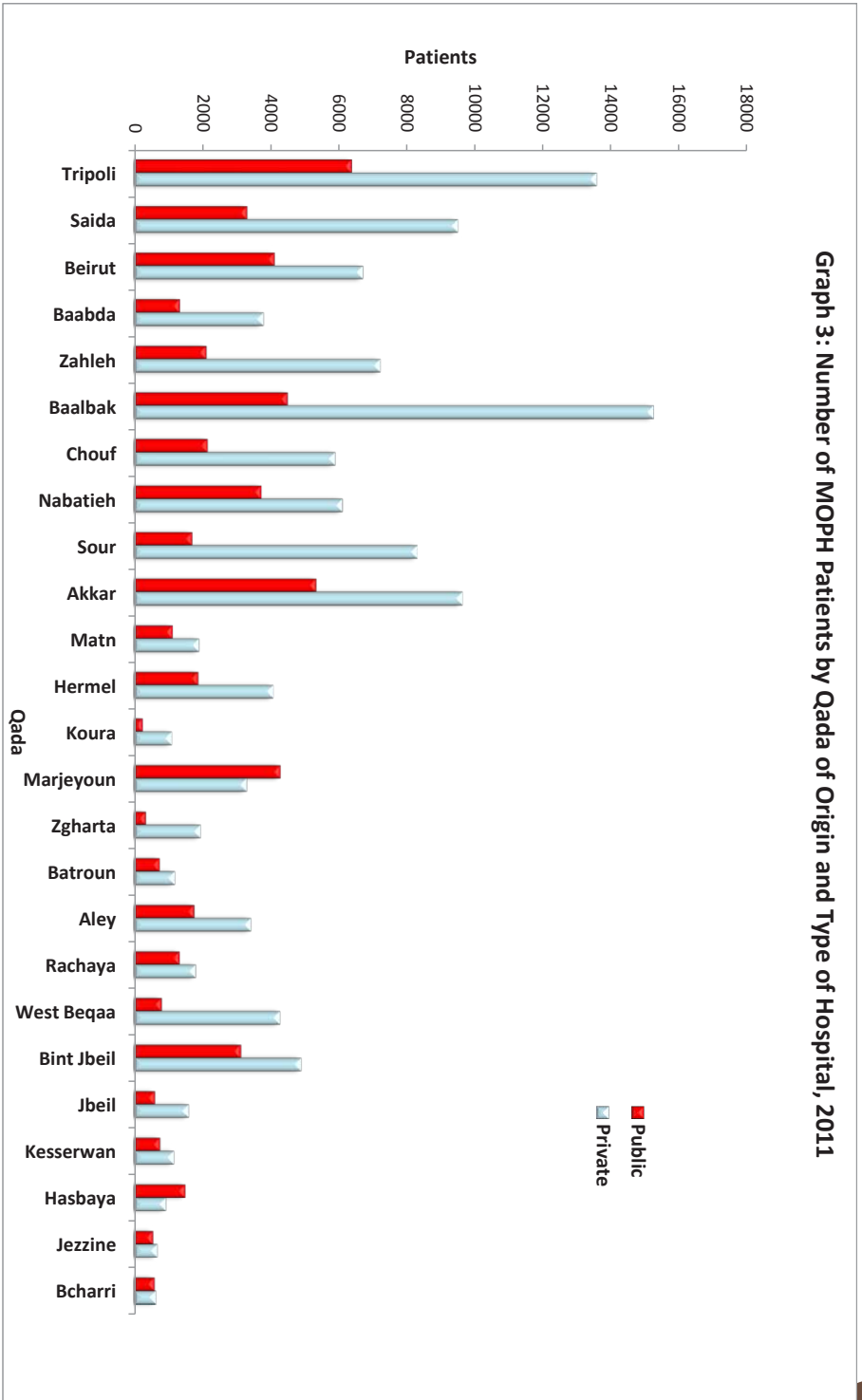
There are around 137,000 patients that benefited from MOPH hospital coverage in both the public and the private sector. Looking at the distribution of patients, we find that patients' number from a certain district are lower or higher than those seeking services in the hospitals of that same district which might reflect the actual place of residence of the patients. For example, while patients who are originally from Tripoli, Baalbak, Akkar and Saida were the highest in number, the patients admitted to hospitals in the districts of Tripoli, Saida, Zahleh and Baabda were the highest in number. This gives an idea about the free choice given to patients in choosing the place and provider of services under the MOPH coverage, irrespective of their place of origin, place of residence or type of hospital.

Graph 2: Number of Subsidized In-Patients by Qada of Origin and Hospital Location, MOPH 2011





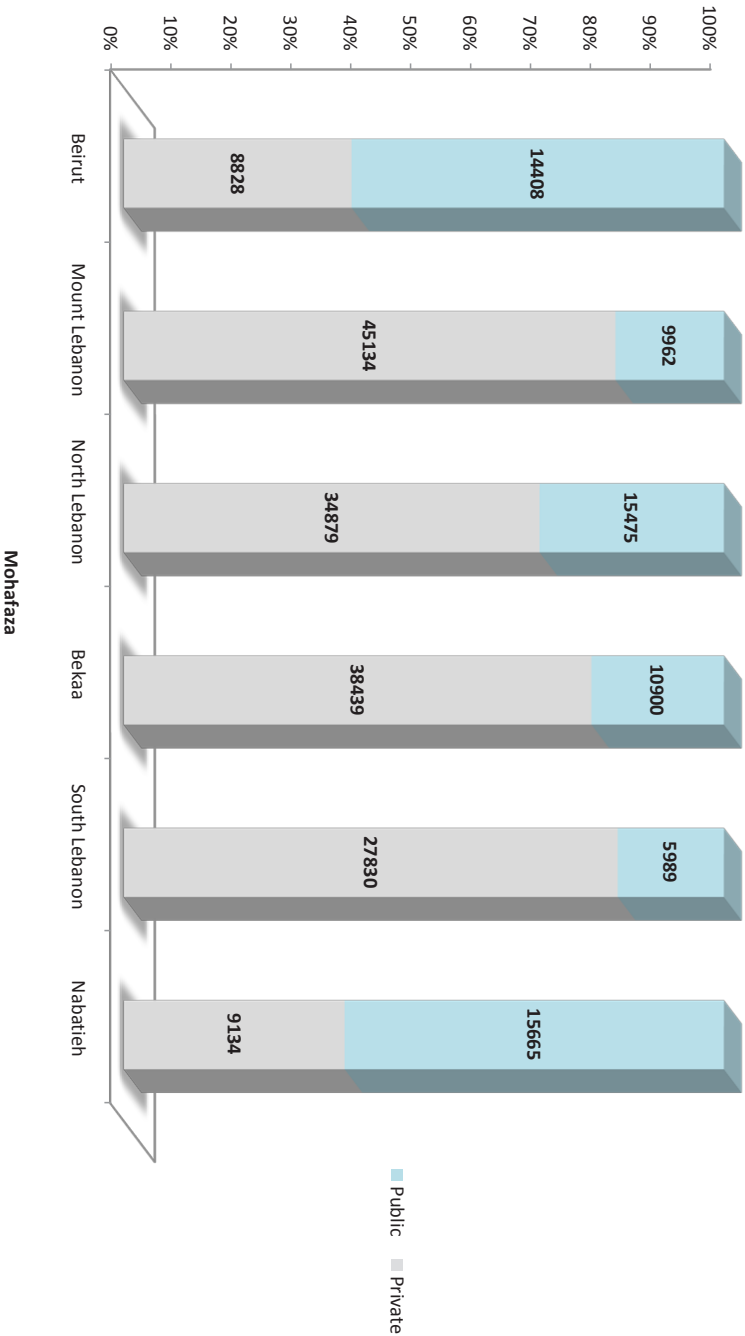
Graph 3: Number of MOPH Patients by Qada of Origin and Type of Hospital, 2011



The number of patients who visit private hospitals is higher than the number of those who visit public hospitals. This is due to the fact that the private beds supply is in general higher in number so patients have more choice except for the patients from remote districts where public hospitals are the only ones available like in Hasbaya and Marje'youn.

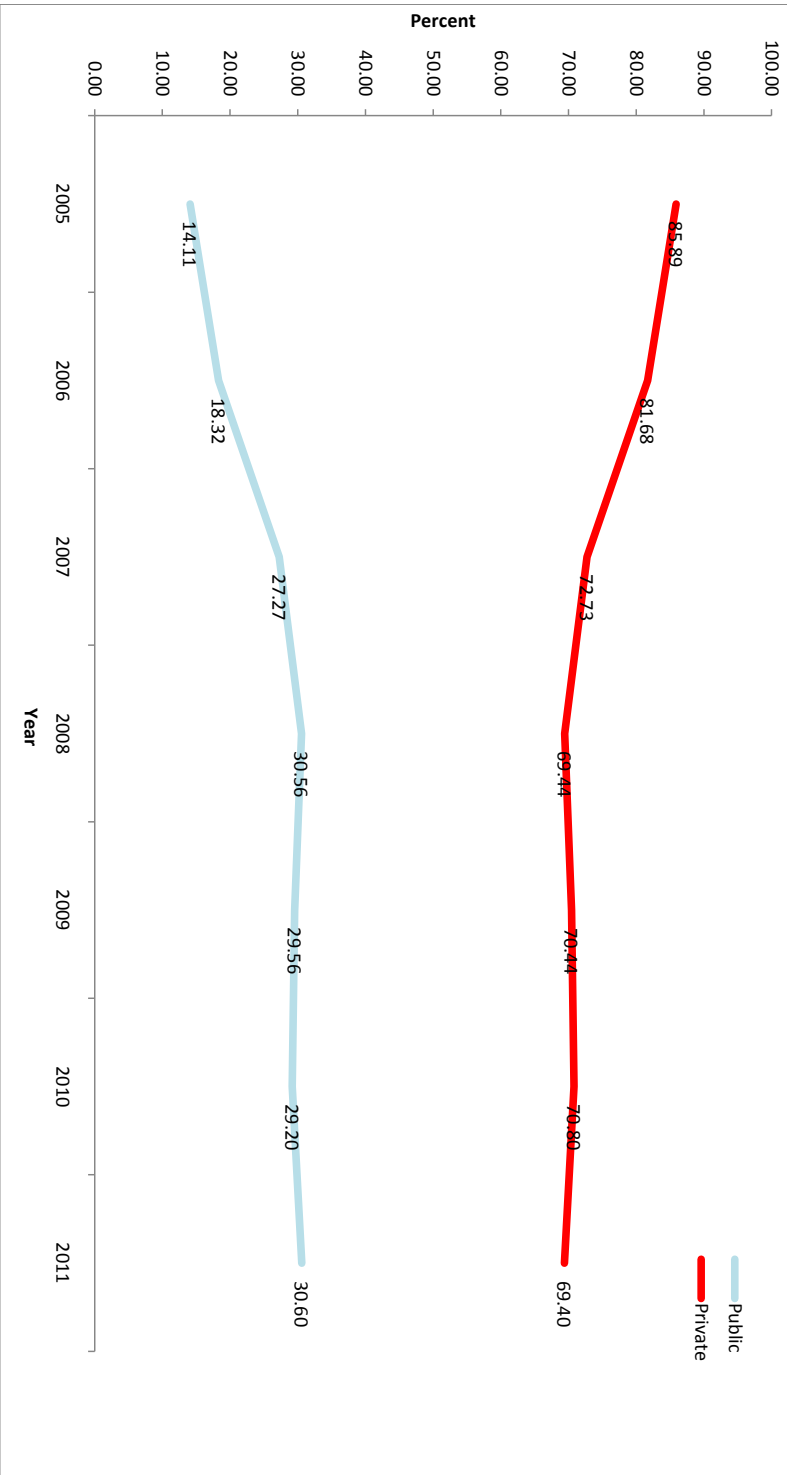
There were 236,643 MOPH subsidized admissions to hospitals during 2011; 164,244 in private hospitals, and 72,399 in public hospitals. As expected, in areas where there are active and contracted public hospitals, the number of admissions in public hospitals exceeds that in contracted private hospitals.

Graph 4 : Number of Admissions by Type of Hospital and Location, MOPH 2011

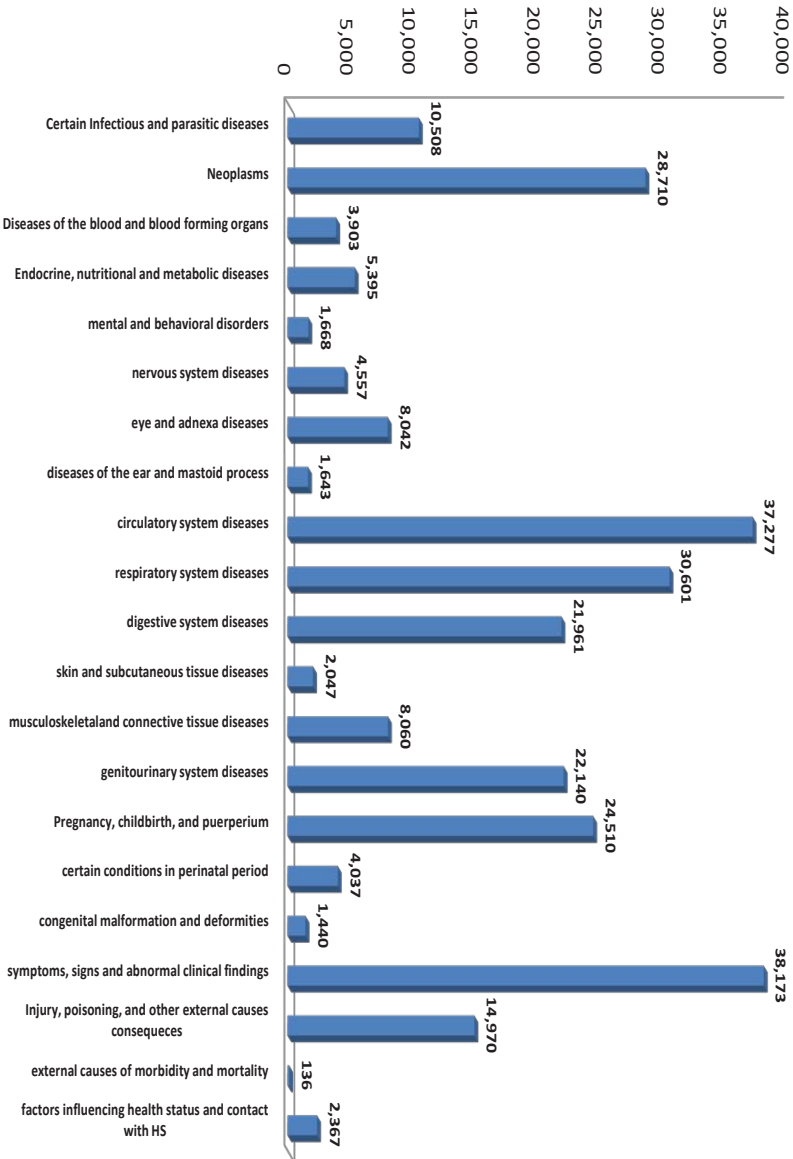




Graph 5: The Evolution of MOPH Subsidized Admissions in Public and Private Hospitals Between 2005 and 2011



Year after year, the public hospitals are continuing to offer an improving quality services, and their admissions have been increasing steadily. But, this increase has reached a plateau revolving around 30/70 ratio with the private sector. This is due to the fact that originally the number of public active beds is lower than that of the private beds in addition to reaching a maximum occupancy rate in the public hospitals.



The majority of the conditions presenting for hospitalizations fall under the circulatory system (37,277), the respiratory system (30,601), followed by neoplasms (28,710), and pregnancy and related conditions (24,510). It is worth mentioning that the trend is the same over the last 3 years in terms of top 5 groups of condition prevalence among subsidized population, although in nominal figures the circulatory conditions have decreased from the previous year (37,476 vs 37,227), while respiratory system conditions and neoplasms have increased (27,834 vs 30,601 cases; and 25,803 vs 28,710 cases, respectively).



The Ministry of Public Health visa billing system uses the International Classification of Diseases 10th revision (ICD10) coding system. 272,145 ICD10 diagnoses were registered on admissions during 2011. The number of diagnoses issued for females (149,695), exceeds that for males (122,450) in all categories of diagnoses.

Table 10: MOPH Subsidized Hospital Admissions By Categories of Diagnosis and Gender, 2011

ICD10	Codes	Description	M	F	T
Chapter 1	A00-B99	Certain Infectious and Parasitic Diseases	M	F	T
	A00-A09	Intestinal Infectious Diseases	4,838	4,412	9,250
	A15-A19	Tuberculosis	17	10	27
	A20-A28	Certain zoonotic bacterial diseases	38	48	86
	A30-A49	Other bacterial diseases	328	346	674
	A50-A64	Infections with a predominantly sexual mode of transmission	6	9	15
	A65-A69	Other spirochaetal diseases	3	3	6
	A70-A74	Other diseases caused by chlamydiae	1	1	2
	A75-A79	Rickettsioses	2	4	6
	A80-A89	Viral Infections of the CNS	20	14	34
	A90-A99	Arthropod-borne viral fevers and viral hemorrhagic fevers	4	4	8
	B00-B09	Viral Infections characterized by skin and mucous membrane lesions	37	24	61
	B15-B19	Viral hepatitis	71	55	126
	B20-B24	Human immunodeficiency virus[HIV] disease	11	1	12
	B25-B34	Other viral diseases	13	10	23
	B35-B49	Mycoses	3	6	9
	B50-B64	Protozoal diseases	21	9	30
	B65-B83	Helminthiases	12	17	29
	B85-B89	Pediculosis, acariasis and other infestations	1	1	2
	B90-B94	Sequelae of infectious and parasitic diseases	1	1	2
	B95-B97	Bacterial, viral and other infectious agents	8	9	17
	B99	Other infectious diseases	52	37	89
Total			5,487	5,021	10,508
Chapter 2	C00-D48	Neoplasms	M	F	T
	C00-C97	Malignant Neoplasms	10,764	14,960	25,724
	C00-C14.8	lip oral cavity and pharynx	205	162	367
	C15-C26.9	digestive organs	1,777	1,614	3,391
	C30-C39.9	respiratory and intrathoracic organs	1,964	917	2,881
	C40-C41.9	bone and articular cartilage	120	107	227
	C43-C44.9	melanoma and other malignant neoplasms of skin	97	47	144
	C45-C49.9	mesothelial and soft tissue	159	103	262
	C50-C50.9	breast	197	6,891	7,088
	C51-C58	female genital organs	76	1,226	1,302
	C60-C63.9	male genital organs	766	58	824
	C64-C68.9	urinary tract	1,054	271	1,325
	C69-C72.9	eye, brain, and other parts of CNS	451	270	721
	C73-C75.9	thyroid and other endocrine glands	141	150	291
	C76-C80	ill-defined, secondary, and unspecified sites	379	500	879
	C81-C96.9	lymphoid, haematopoietic and related tissue	3,378	2,641	6,019
	C97	independent (primary) multiple sites	0	3	3
	D00-D09	In situ neoplasms	75	49	124
	D10-D36	Benign neoplasms	808	1,622	2,430
	D37-D48	Neoplasms of uncertain and unknown behavior	203	229	432
Total			11,850	16,860	28,710

ICD10	Codes	Description	M	F	T
Chapter 3	D50-D53	Diseases of the blood and blood forming organs and certain disorders involving the immune mechanism	M	F	T
	D50-D53	Nutritional anaemias	277	392	669
	D55-D59	Haemolytic anaemias	784	460	1,244
	D60-D64	Aplastic and other anaemias	687	832	1,519
	D65-D69	Coagulation defects, purpura and other haemorrhagic	144	124	268
	D70-D77	Other diseases of the blood and blood forming organs	35	28	63
	D80-D89	Certain Disorders involving the immune mechanism	97	43	140
Total			2,024	1,879	3,903
Chapter 4	E00-E90	Endocrine, Nutritional and metabolic diseases	M	F	T
	E00-E07	Disorders of thyroid gland	174	875	1,049
	E10-E14	Diabetes mellitus	1,407	1,809	3,216
	E15-E16	Other disorders of glucose regulation and pancreatic internal secretion	49	56	105
	E20-E35	Disorders of other endocrine glands	79	90	169
	E40-E46	Malnutrition	10	12	22
	E50-E64	Other nutritional deficiencies	4	14	18
	E65-E68	Obesity and other hyperalimentation	99	238	337
	E70-E90	Metabolic disorders	242	237	479
Total			2,064	3,331	5,395
Chapter 5	F00-F99	Mental and Behavioral disorders	M	F	T
	F00-F09	Organic, including symptomatic, mental disorders	35	88	123
	F10-F19	Mental and Behavioral disorders due to psychoactive substance abuse	131	41	172
	F20-F29	Schizophrenia, schizotypal and delusional disorders	548	344	892
	F30-F39	Mood [affective] disorders	67	85	152
	F40-F48	Neurotic, stress-related and somatoform disorders	36	54	90
	F50-F59	Behavioral syndromes associated with physiological disturbances and physical factors	4	3	7
	F60-F69	Disorders of adult personality and behaviour	5	7	12
	F70-F79	Mental retardation	104	92	196
	F80-F89	Disorders of psychological development	7	5	12
	F90-F98	Behavioral and emotional disorders with onset usually occurring in childhood and adolescence	4	3	7
	F99	Unspecified mental disorder	2	3	5
Total			943	725	1,668
Chapter 6	G00-G99	Diseases of the nervous system	M	F	T
	G00-G09	Inflammatory diseases of the central nervous system	136	111	247
	G10-G13	Systemic atrophies primarily affecting the nervous system	14	26	40
	G20-G26	Extrapyramidal and mood disorders	34	36	70
	G30-G32	Other degenerative diseases of the nervous system	21	33	54
	G35-G37	Demyelinating diseases of the CNS	67	105	172
	G40-G47	Episodic and paroxysmal disorders	802	737	1,539
	G50-G59	Nerve, nerve root and plexus disorders	184	542	726
	G60-G64	polyneuropathies and other disorders of the peripheral NS	42	39	81
	G70-G73	Diseases of myoneural junction and muscle	13	13	26
	G80-G83	Cerebral palsy and other paralytic syndromes	685	600	1,285
	G90-G99	Others disorders of the nervous system	191	126	317
Total			2,189	2,368	4,557



The Ministry of Public Health visa billing system uses the International Classification of Diseases 10th revision (ICD10) coding system. 272,145 ICD10 diagnoses were registered on admissions during 2011. The number of diagnoses issued for females (149,695), exceeds that for males (122,450) in all categories of diagnoses.

ICD10	Codes	Description	M	F	T
Chapter 7	H00-H59	Diseases of the eye and adnexa	M	F	T
	H00-H06	Disorders of eyelid, lachrymal system and orbit	131	147	278
	H10-H13	Disorders of conjunctiva	44	57	101
	H15-H22	Disorders of sclera, cornea, iris, and ciliary body	111	102	213
	H25-H28	Disorders of lens	2,692	3,453	6,145
	H30-H36	Disorders of choroid and retina	104	99	203
	H40-H42	Glaucoma	131	142	273
	H43-H45	Disorders of vitreous body and globe	138	94	232
	H46-H48	Disorders of optic nerve and visual pathways	0	3	3
	H49-H52	Disorders of ocular muscles, binocular movement accommodation and refraction	87	86	173
	H53-H54	Visual disturbances and blindness	65	56	121
	H55-H59	Other disorders of eye and adnexa	140	160	300
Total			3,643	4,399	8,042
Chapter 8	H60-H95	Diseases of the ear and mastoid process	M	F	T
	H60-H62	Diseases of the external ear	156	140	296
	H65-H75	Diseases of the middle ear and mastoid	503	496	999
	H80-H83	Diseases of the inner ear	104	170	274
	H90-H95	Other disorders of ear	30	44	74
Total			793	850	1,643
Chapter 9	I00-I99	Diseases of the circulatory system	M	F	T
	I00-I02	Acute Rheumatic fever	17	27	44
	I05-I09	Chronic rheumatic heart disease	85	97	182
	I10-I15	Hypertensive diseases	3,070	4,428	7,498
	I20-I25	Ischemic heart diseases	10,175	6,977	17,152
	I26-I28	circulation	46	45	91
	I30-I52	Other forms of heart disease	2,819	3,198	6,017
	I60-I69	Cerebrovascular diseases	1,295	1,283	2,578
	I70-I79	Diseases of arteries arterioles and capillaries	627	406	1,033
	I80-I89	Diseases of veins, lymphatic vessels and lymph nodes NEC	1,471	860	2,331
	I95-I99	Other and unspecified disorders of the circulatory system	155	196	351
Total			19,760	17,517	37,277
Chapter 10	J00-J99	Diseases of the respiratory system	M	F	T
	J00-J06	Acute upper respiratory infections	1,140	816	1,956
	J10-J18	Influenza and pneumonia	5,962	5,181	11,143
	J20-J22	Other acute lower respiratory infections	1,846	1,543	3,389
	J30-J39	Other diseases of upper respiratory tract	3,923	3,515	7,438
	J40-J47	Chronic lower respiratory diseases	2,172	1,923	4,095
	J60-J70	Lung diseases due to external agents	41	31	72
	J80-J84	Other resp. diseases principally affecting interstitium	762	897	1,659
	J85-J86	Suppurative and necrotic conditions of lower RT	26	6	32
	J90-J94	Other diseases of plura	201	131	332
	J95-J99	Other diseases of the respiratory system	264	221	485
Total			16,337	14,264	30,601

ICD10	Codes	Description	M	F	T
Chapter 11	K00-K93	Diseases of the digestive system	M	F	T
	K00-K14	Diseases of oral cavity salivary glands and jaws	233	231	464
	K20-K31	Diseases of oesophagus, stomach and duodenum	1,320	1,713	3,033
	K35-K38	Diseases of appendix	908	856	1,764
	K40-K46	Hernia	4,180	1,548	5,728
	K50-K52	Noninfective enteritis and colitis	806	919	1,725
	K55-K63	Other diseases of intestines	1,495	1,074	2,569
	K65-K67	Diseases of peritoneum	164	151	315
	K70-K77	Diseases of liver	308	187	495
	K80-K87	Disorders of gallbladder, biliary tract and pancreas	1,598	3,522	5,120
	K90-K93	Other diseases of the digestive system	398	350	748
Total			11,410	10,551	21,961
Chapter 12	L00-L99	Diseases of the skin and subcutaneous tissue	M	F	T
	L00-L08	Infections of the skin and subcutaneous tissue	802	486	1,288
	L10-L14	Bullous disorders	3	5	8
	L20-L30	Dermatitis and eczema	8	6	14
	L40-L45	Papulosquamous disorders	10	8	18
	L50-L54	Urticaria and erythema	40	33	73
	L55-L59	tissue	1	3	4
	L60-L75	Disorders of skin appendages	30	25	55
	L80-L99	Other disorders of the skin and subcutaneous tissue	322	265	587
Total			1,216	831	2,047
Chapter 13	M00-M99	Diseases of the musculoskeletal system and connective tissue	M	F	T
	M00-M25	Arthropathies	1,372	1,824	3,196
	M0-M03	infectious arthropathies	16	26	42
	M05-M14.8	inflammatory polyarthropathies	255	439	694
	M15-M19.9	arthrosis	429	686	1,115
	M20-M25.9	other joint disorders	672	673	1,345
	M30-M36	Systemic connective tissue disorders	40	66	106
	M40-M54	Dorsopathies	1,145	1,580	2,725
	M40-M43.9	deforming dorsopathies	30	34	64
	M45-M49.8	spondylopathies	115	159	274
	M50-M54.9	other dorsopathies	1,000	1,387	2,387
	M60-M79	Soft tissue disorders	484	647	1,131
	M60-M63.8	disorders of muscles	61	59	120
	M65-M68.8	disorders of synovium and tendon	183	301	484
	M70-M79.9	other soft tissue disorders	240	287	527
	M80-M94	Osteopathies and chondropathies	519	323	842
	M80-M85.9	disorders of bonedensity and structure	157	115	272
	M86-M90.8	other osteopathies	341	185	526
	M91-M94.9	chondropathies	21	23	44
	M95-M99	Other disorders of the musculoskeletal system and connective tissue	35	25	60
Total			3,595	4,465	8,060



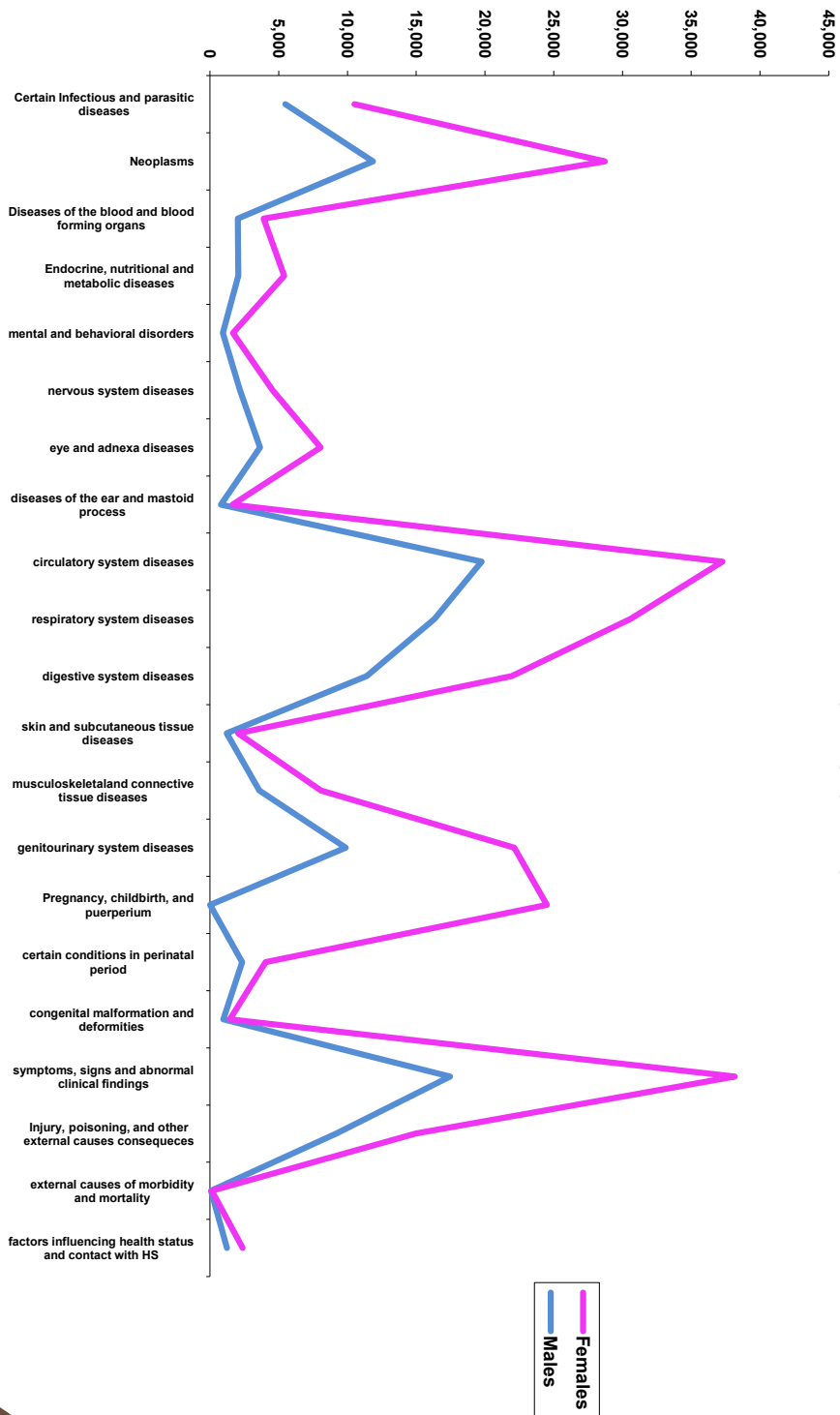
The Ministry of Public Health visa billing system uses the International Classification of Diseases 10th revision (ICD10) coding system. 272,145 ICD10 diagnoses were registered on admissions during 2011. The number of diagnoses issued for females (149,695), exceeds that for males (122,450) in all categories of diagnoses.

ICD10	Codes	Description	M	F	T
Chapter 14	N00-N99	Diseases of the genitourinary system	M	F	T
	N00-N08	Glomerular diseases	161	140	301
	N10-N16	Renal tubulo-interstitial diseases	552	693	1,245
	N17-N19	Renal failure	1,405	1,268	2,673
	N20-N23	Urolithiasis	4,104	2,891	6,995
	N25-N29	Other disorders of kidney and ureter	71	71	142
	N30-N39	Other diseases of the urinary system	1,270	1,793	3,063
	N40-N51	Diseases of male genital organs	2,275	0	2,275
	N60-N64	Disorders of breast	39	380	419
	N70-N77	Inflammatory diseases of female pelvic organs	0	377	377
	N80-N98	Noninflammatory disorders of female genital tract	0	4,635	4,635
	N99	Other disorders of the genitourinary system	0	15	15
Total			9,877	12,263	22,140
Chapter 15	O00-O99	Pregnancy, Childbirth and puerperium	M	F	T
	O00-O08	Pregnancy with abortive outcome	0	1,545	1,545
	O10-O16	Oedema, proteinuria and hypertensive disorders in pregnancy, childbirth and the puerperium	0	62	62
	O20-O29	Other maternal disorders predominantly related to pregnancy	0	224	224
	O30-O48	Maternal care related to the fetus and amniotic cavity and possible delivery problems	0	278	278
	O60-O75	Complications of labor and delivery	0	194	194
	O80-O84	Delivery	0	22,155	22,155
	O85-O92	Complications predominantly related to the puerperium	0	30	30
	O95-O99	Other obstetric conditions NEC	0	22	22
Total			0	24,510	24,510
Chapter 16	P00-P96	Certain conditions originating in the perinatal period	M	F	T
	P00-P04	Fetus and newborn affected by maternal factors and by complications of pregnancy labour and delivery	39	121	160
	P05-P08	Disorders related to length of gestation and fetal growth	258	199	457
	P10-P15	Birth trauma	9	6	15
	P20-P29	Respiratory and cardiovascular disorders specific to the perinatal period	1,263	812	2,075
	P35-P39	Infections specific to the perinatal period	313	211	524
	P50-P61	Haemorrhagic and haematological disorders of fetus and newborn	363	270	633
	P70-P74	Transitory endocrine and metabolic disorders specific to fetus and newborn	40	29	69
	P75-P78	Digestive system disorders of fetus and newborn	16	19	35
	P80-P83	Conditions involving the integument and temperature regulation of fetus and newborn	19	20	39
	P90-P96	Other disorders originating in the perinatal period	16	14	30
Total			2,336	1,701	4,037

ICD10	Codes	Description	M	F	T
Chapter 17	Q00-Q99	Congenital malformations, deformations and chromosomal abnormalities	M	F	T
	Q00-Q07	Congenital malformations of the nervous system	29	32	61
	Q10-Q18	Congenital malformations of eye, ear, face and neck	15	15	30
	Q20-Q28	Congenital malformations of the circulatory system	82	79	161
	Q30-Q34	Congenital malformations of the respiratory system	17	10	27
	Q35-Q37	Cleft lip and cleft palate	35	20	55
	Q38-Q45	Other congenital malformations of the digestive system	66	46	112
	Q50-Q56	Congenital malformations of the genital organs	446	28	474
	Q60-Q64	Congenital malformations of the urinary system	130	71	201
	Q65-Q79	Congenital malformations and deformations of the musculoskeletal system	112	138	250
	Q80-Q89	Other congenital malformations	23	8	31
	Q90-Q99	Chromosomal abnormalities, NEC	15	23	38
Total			970	470	1,440
Chapter 18	R00-R99	Symptoms, signs and abnormal clinical and laboratory findings NEC	M	F	T
	R00-R09	Symptoms and signs involving the circulatory and respiratory systems	4,312	4,487	8,799
	R10-R19	Symptoms and signs involving the digestive system and abdomen	6,030	9,314	15,344
	R20-R23	Symptoms and signs involving the skin and subcutaneous tissue	151	150	301
	R25-R29	Symptoms and signs involving the nervous and musculoskeletal systems	37	52	89
	R30-R39	Symptoms and signs involving the urinary system	975	509	1,484
	R40-R46	Symptoms and signs involving cognition, perception, emotional state and behaviour	612	710	1,322
	R47-R49	Symptoms and signs involving speech and voice	19	17	36
	R50-R69	General symptoms and signs	5,215	5,324	10,539
	R70-R79	Abnormal findings on examination of blood, without diagnosis	47	75	122
	R80-R82	Abnormal findings on examination of urine, without diagnosis	37	45	82
	R83-R89	Abnormal findings on examination of other body fluids substances and tissues, without diagnosis	11	17	28
	R90-R94	Abnormal findings on diagnostic imaging and in function studies, without diagnosis	10	10	20
	R95-R99	Ill-defined and unknown causes of mortality	5	2	7
Total			17,461	20,712	38,173
Chapter 19	S00-T98	Injury, poisoning and certain other consequences of external causes	M	F	T
	S00-S09	Injuries to the head	1,165	550	1,715
	S10-S19	Injuries to the neck	130	69	199
	S20-S29	Injuries to the thorax	121	81	202
	S30-S39	Injuries to the abdomen, lower back, lumbar spine and pelvis	174	122	296
	S40-S49	Injuries to the shoulder and upper arm	650	471	1,121



ICD10	Codes	Description	M	F	T
	S50-S59	Injuries to the elbow and forearm	1,129	661	1,790
	S60-S69	Injuries to the wrist and hand	1,071	475	1,546
	S70-S79	Injuries to the hip and thigh	1,059	1,237	2,296
	S80-S89	Injuries to the knee and lower leg	1,242	645	1,887
	S90-S99	Injuries to the ankle and foot	355	173	528
	T00-T07	Injuries involving multiple body regions	1,207	655	1,862
	T08-T14	Injuries to unspecified part of trunk, limb or body region	276	130	406
	T15-T19	Effects of foreign body entering through natural orifice	31	30	61
	T20-T32	Burns and corrosions	112	89	201
	T33-T35	Frostbite	12	8	20
	T36-T50	Poisoning by drugs, medicaments and biological substances	20	32	52
	T51-T65	Toxic effects of substances chiefly nonmedicinal as to source	127	109	236
	T66-T78	Other and unspecified effects of external causes	86	48	134
	T79	Certain early complications of trauma	23	9	32
	T80-T88	Complications of surgical and medical care NEC	118	83	201
	T90-T98	Sequelae of injuries, of poisoning and of other consequences of external causes	87	98	185
Total			9,195	5,775	14,970
Chapter 20	V01-Y98	External causes of morbidity and mortality	M	F	T
Total			75	61	136
Chapter 21	Z00-Z99	Factors influencing health status and contact with health services	M	F	T
	Z00-Z13	Persons encountering health services for examination and investigation	65	96	161
	Z20-Z29	Persons with potential health hazards related to communicable diseases	19	14	33
	Z30-Z39	Persons encountering health services in circumstances related to reproduction	16	365	381
	Z40-Z54	Persons encountering health services for specific procedures and health care	904	544	1,448
	Z55-Z65	Persons with potential health hazards related to socioeconomic and psychosocial circumstances	6	11	17
	Z70-Z76	Persons encountering health services in other circumstances	11	4	15
	Z80-Z99	Persons with potential health hazards related to family and personal history and certain conditions influencing health status	204	108	312
Total			1,225	1,142	2,367
Total Number of Hospitalized Diagnoses			122,450	149,695	272,145

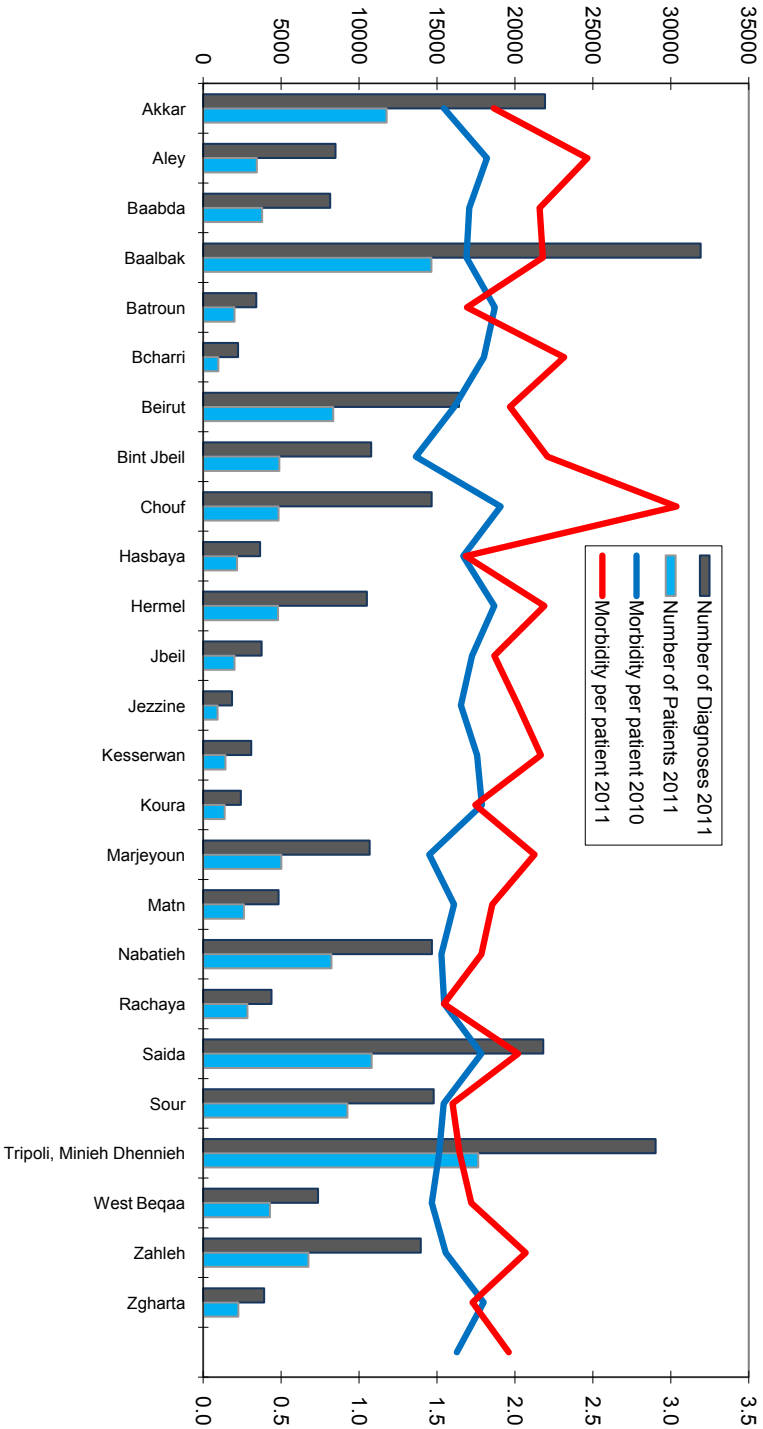


Graph 7: MOPH Subsidized Admissions by Category of Diagnosis and Gender, 2011

In absolute numbers, the number of diagnoses recorded for MOPH services is higher for female admissions across all categories of ICD10. This might be due to multiple morbidities in females, or that the number of females is higher in the eligible (un-insured) category of patients. This needs further investigation.



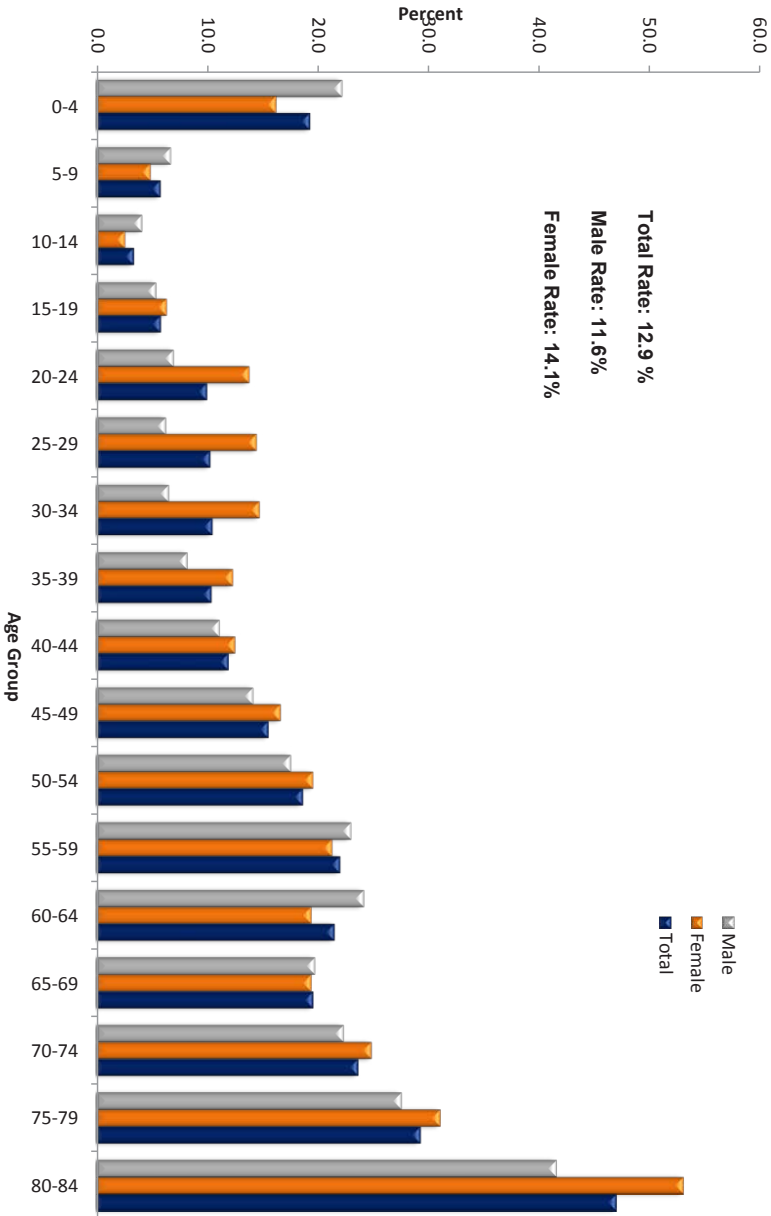
Graph 8: Number of Diagnoses, Number of Patients, and Morbidity per Patient By Qada, 2011



This graph shows that in looking for burden of disease across the districts, it is misleading to look only at the number of patients alone, or the diagnosed conditions alone. While the districts of Tripoli (including Minieh, Dhennieh) and Baalbak exhibit the highest number of patients, and diagnoses, respectively, the Chouf district has the highest number of diagnoses per patient (3.0) followed by Aley (2.5), Bcharri (2.3) and Baabda, baalbak, Bint Jbeil, Hermel and Kesserwan (2.2 each). In addition, there is a clear increase in the number of morbid conditions per patient between 2010 and 2011. These numbers might reflect high morbidity in some districts, but they could also be resulting from under-reporting of diagnoses in some other districts. This needs further investigation.

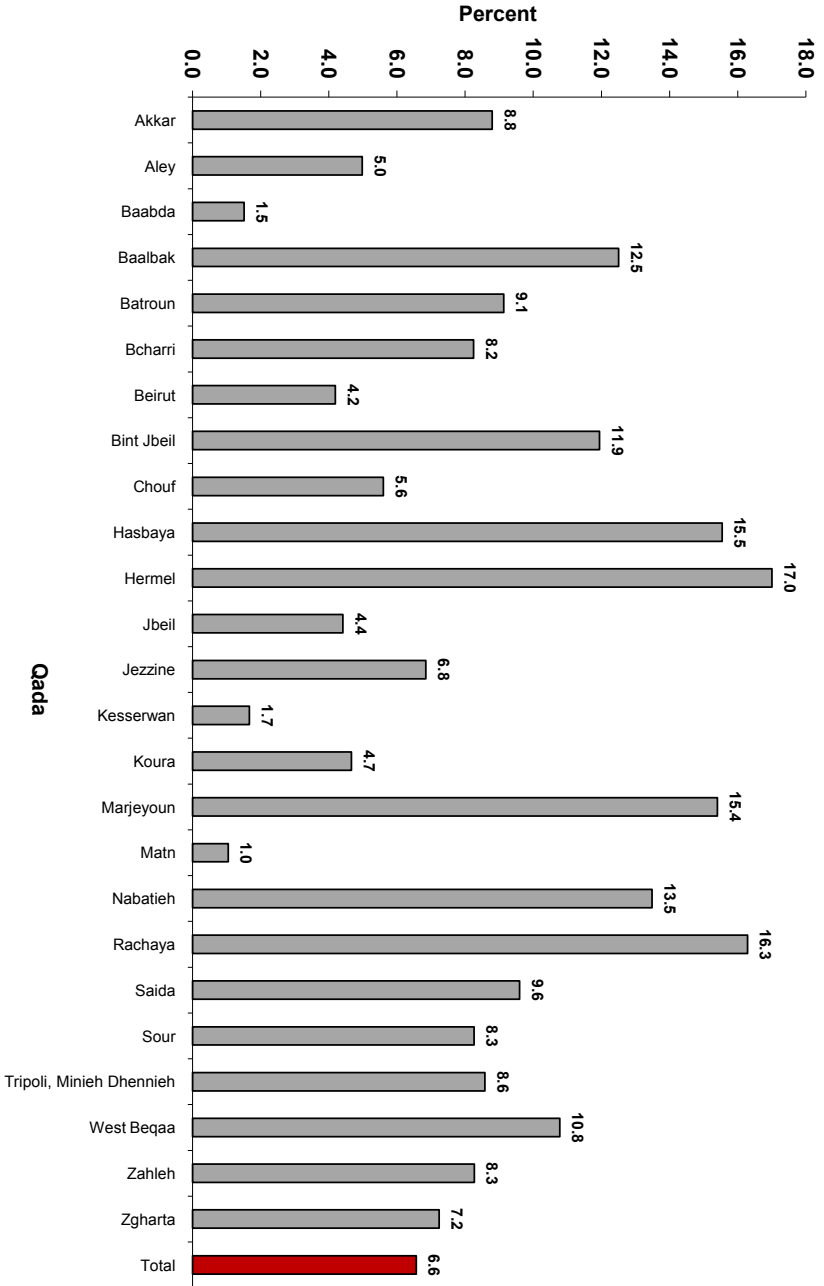
In 2007, the Household survey conducted by the Central Administration for Statistics provided the number of people who don't have any type of medical coverage across all age groups. These individuals are considered to be the eligible population for the MOPH services coverage. The prevalence of medical conditions among those reaches 12.9% (11.6% for males, and 14.1% for females). The pattern of service utilization for females probably follows delivery services in younger age groups, and the utilization for both genders increases with age as the proportion of the working population, and hence medical coverage which is largely related to the professional status, decreases.

Graph 9: Percent Hospitalized Morbidities Among Eligibles By Age Group and Gender, 2011



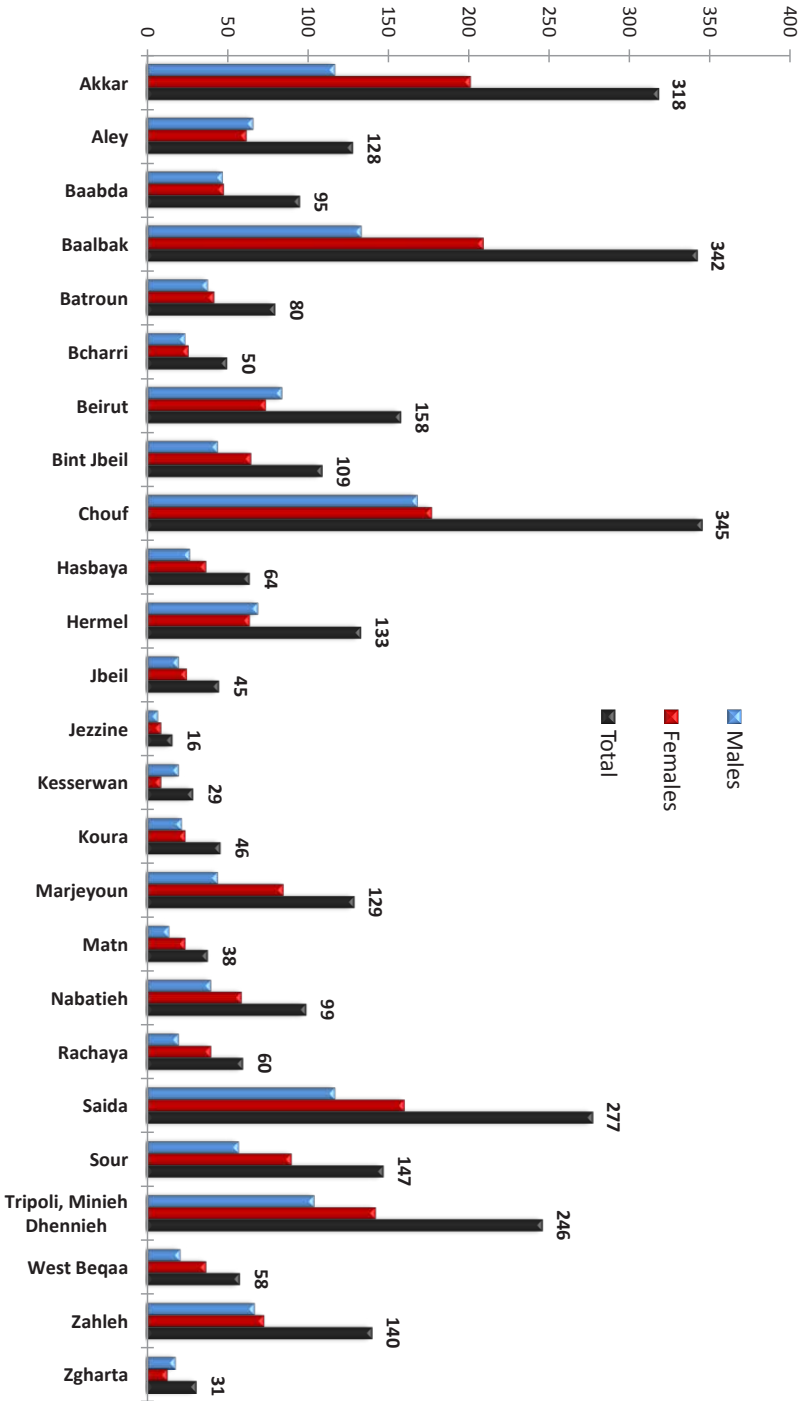


Graph 10: Percent Population Hospitalized Among Eligible Population By Qada, 2011



The CAS Household Survey reports the un-insured population by age group, but it does not provide this figure by district. Rather, for the total population it provides a figure of 51.7% who don't have any form of medical insurance. Thus assuming that those 51.7% are homogeneously distributed across districts, the utilization rate of the district of Hermel is the highest with 17.0% , and the lowest utilization of MOPH services is that of the Metn with only 1.0% of those eligible utilizing the MOPH services. 6.6% for the total eligible population utilize the MOPH services. This could reflect morbidity level, or the pattern of utilization across districts, but it needs further investigation.

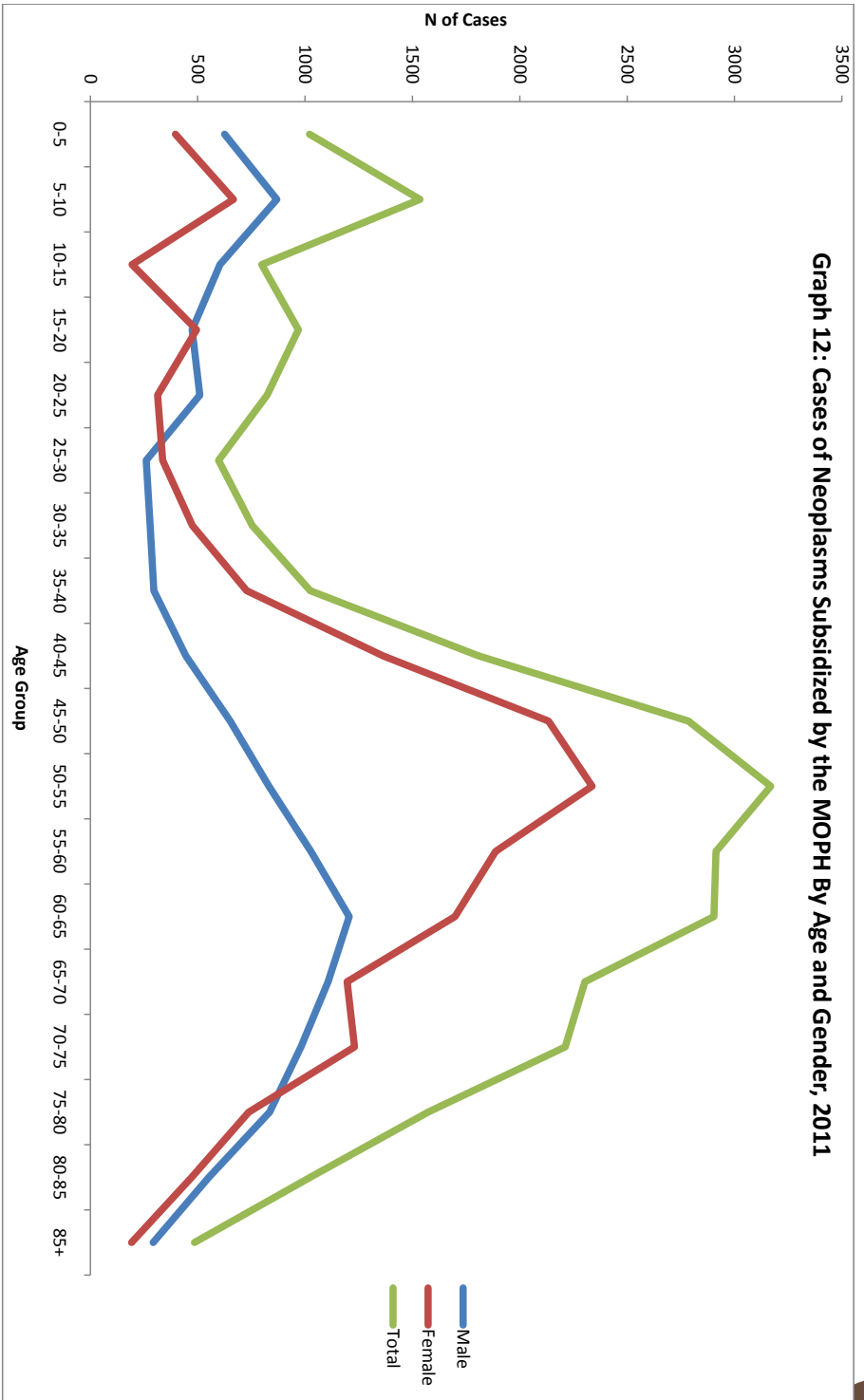
Graph 11: Number of Hospitalized Cases of Diabetes By Qada, 2011



There were 3,183 hospitalized cases of Diabetes during 2011, 56% of whom are females. 48% of the cases are clustered in 5 districts, namely: Chouf, Baalback, Akkar, Saida and Tripoli (including Minieh-Dhennieh). While hospitalized cases do not reflect the true burden in the community, but only the tip of the iceberg, at least the clustering of these cases deserves further investigation.



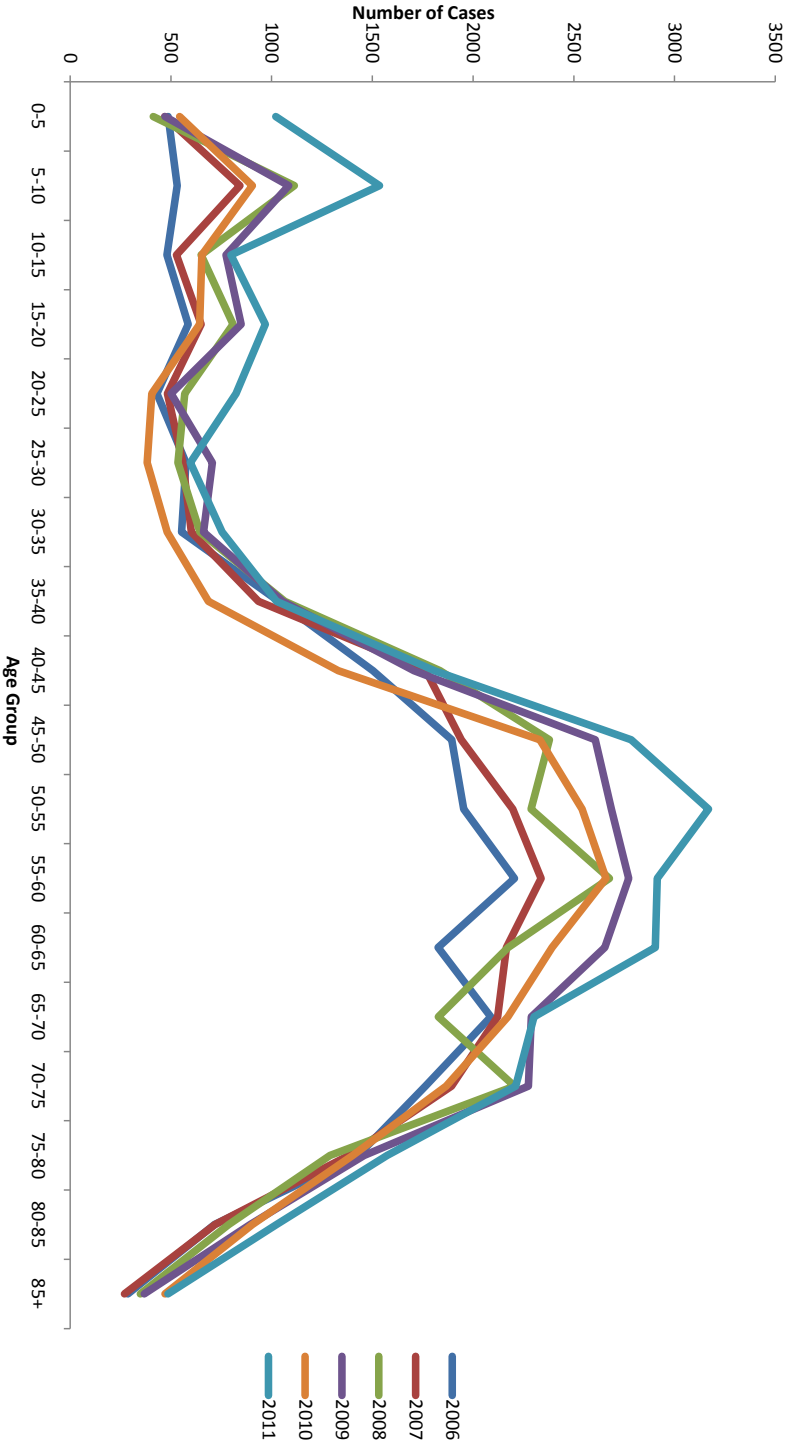
Graph 12: Cases of Neoplasms Subsidized by the MOPH By Age and Gender, 2011



Overall, the number of cases of hospitalized neoplasms is lower for males than females, except in younger age groups. The age group with the highest number of cases is 55-60 years old. Female cases peak at 50-55 years old, while male cases follow a smoother curve with a wider peak between 60 and 70 years old. This could reflect the dissimilar types of cancer that inflict the two genders. For children categories, those between 5-10 years old in both sexes have the highest incidence.

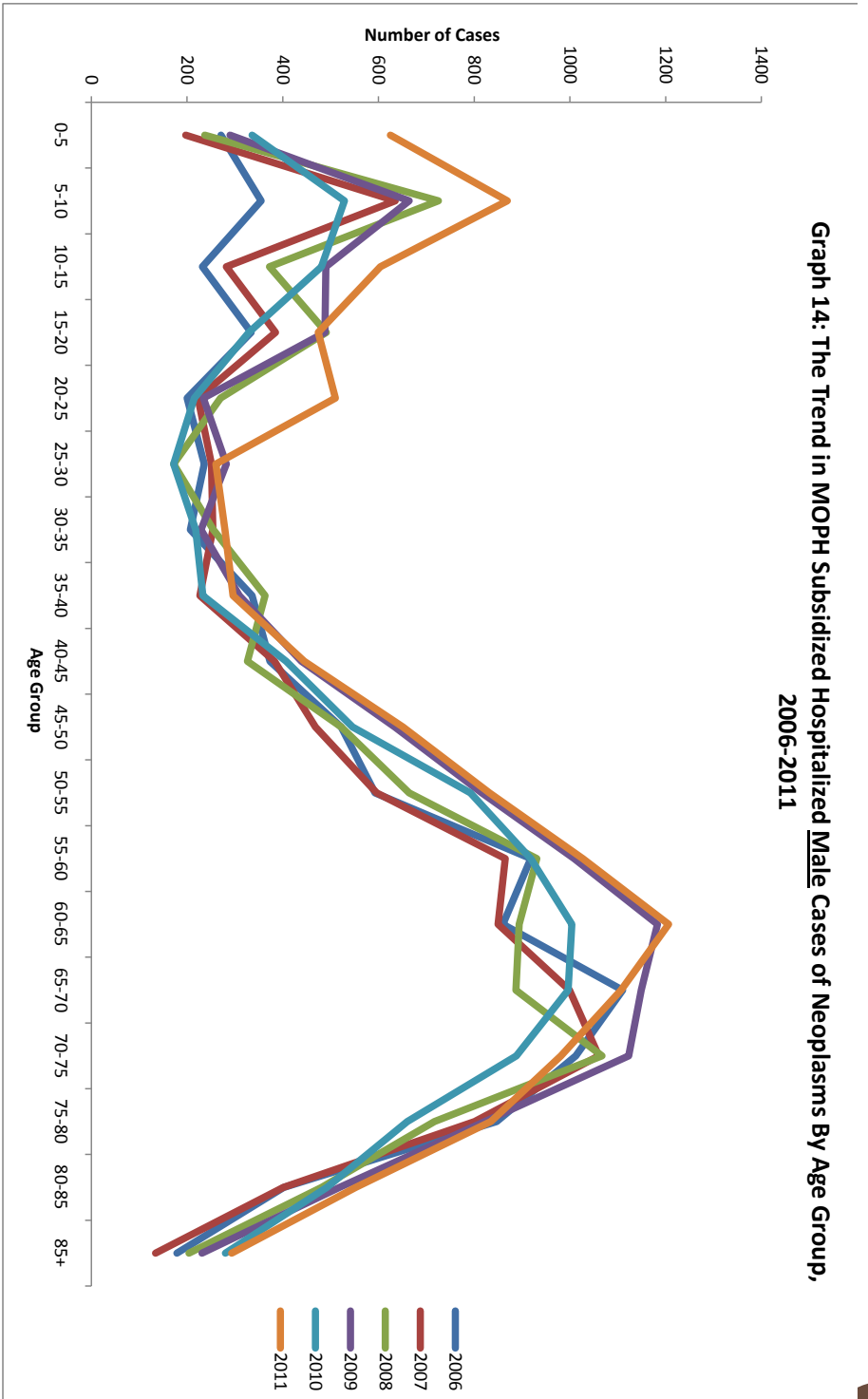
In general, a trend of increase in neoplasm cases between 2006 and 2011, is obvious. There is an increase in the total number of cases from last year (2010). This could be due to a true increase in prevalence, which is supported by other evidence; or could be an increase in service supply or utilization. This calls for further investigation.

Graph 13: The Trend in MOPH Subsidized Hospitalized Cases of Neoplasms By Age Group, 2006-2011





Graph 14: The Trend in MOPH Subsidized Hospitalized Male Cases of Neoplasms By Age Group, 2006-2011

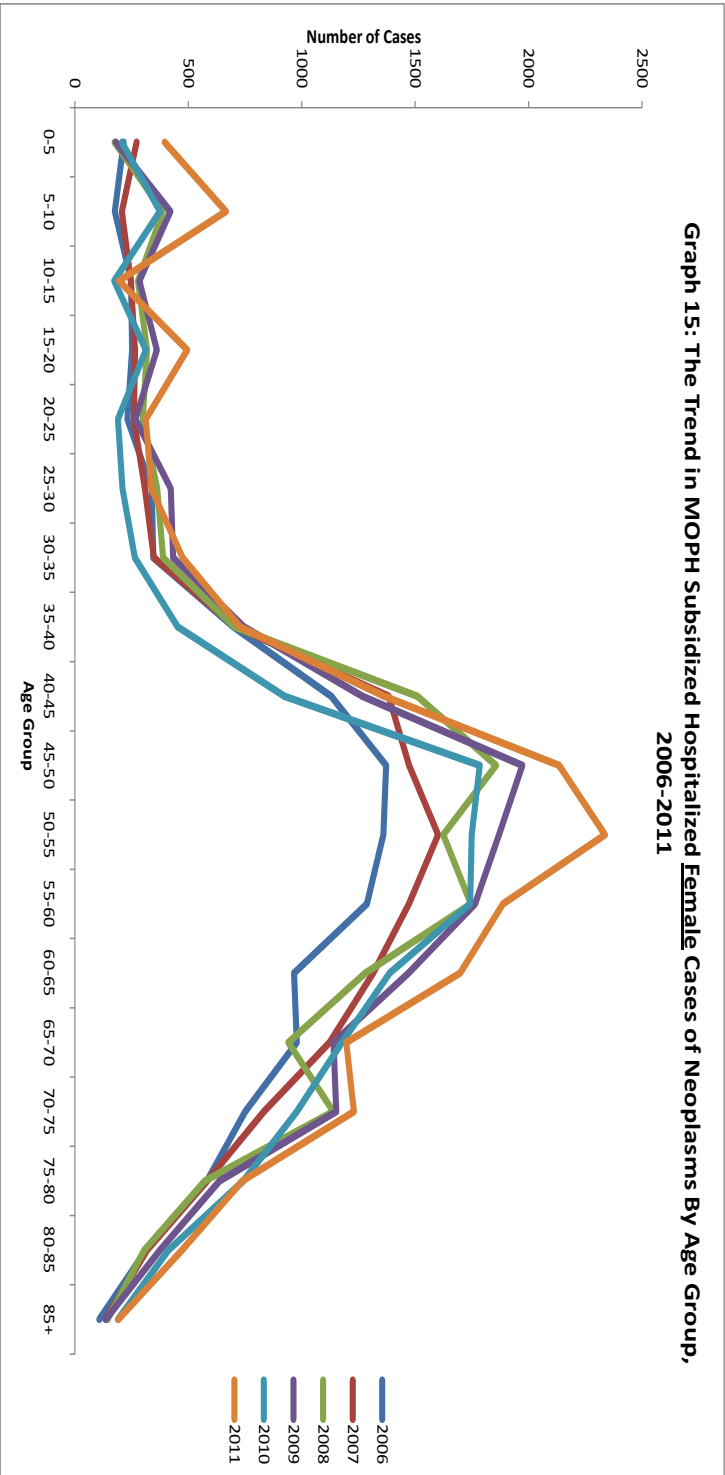


The increase in cases between 2010 and 2011 is higher for males in the younger age groups.



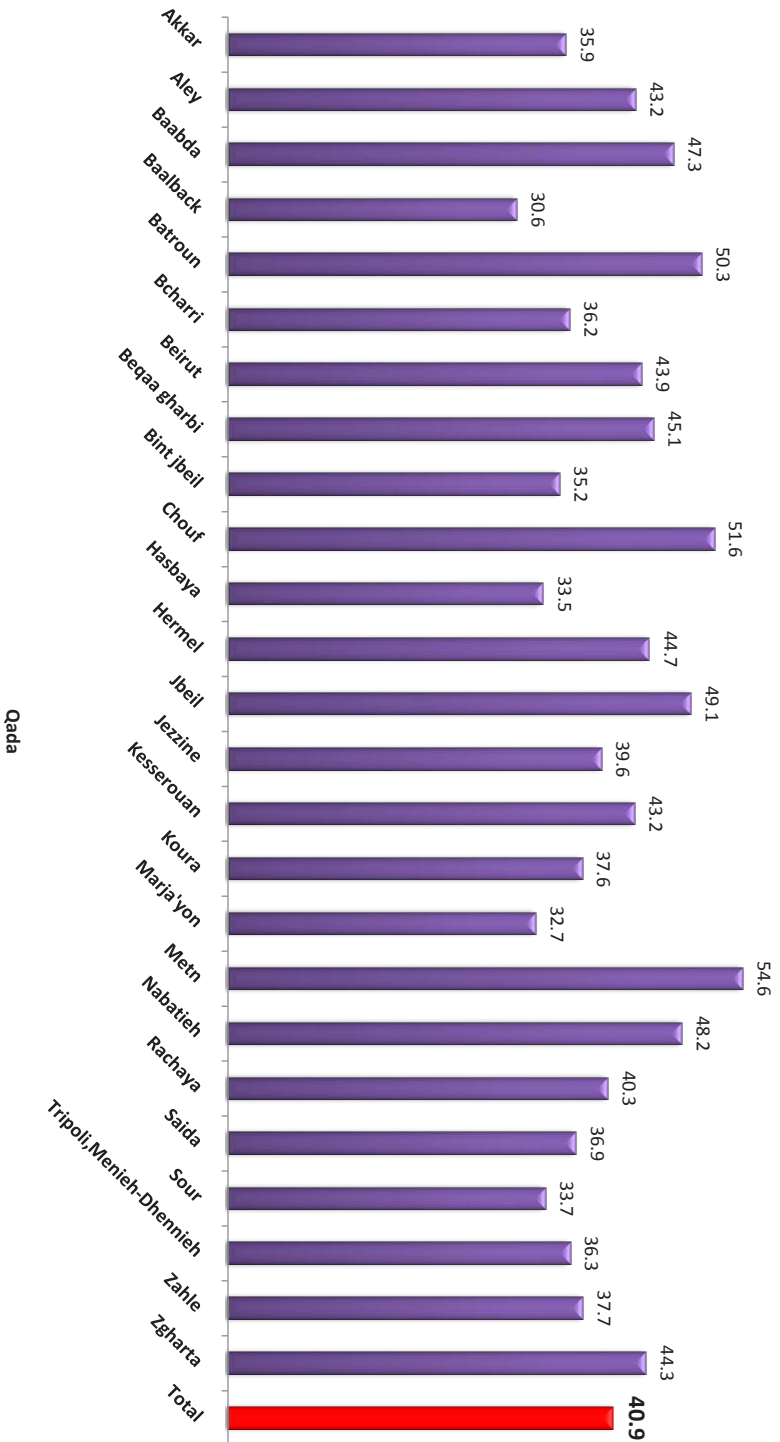
Although there is an increase in number of cases between 2010 and 2011, but it is not as significant as that in the males group.

Graph 15: The Trend in MOPH Subsidized Hospitalized Female Cases of Neoplasms By Age Group, 2006-2011





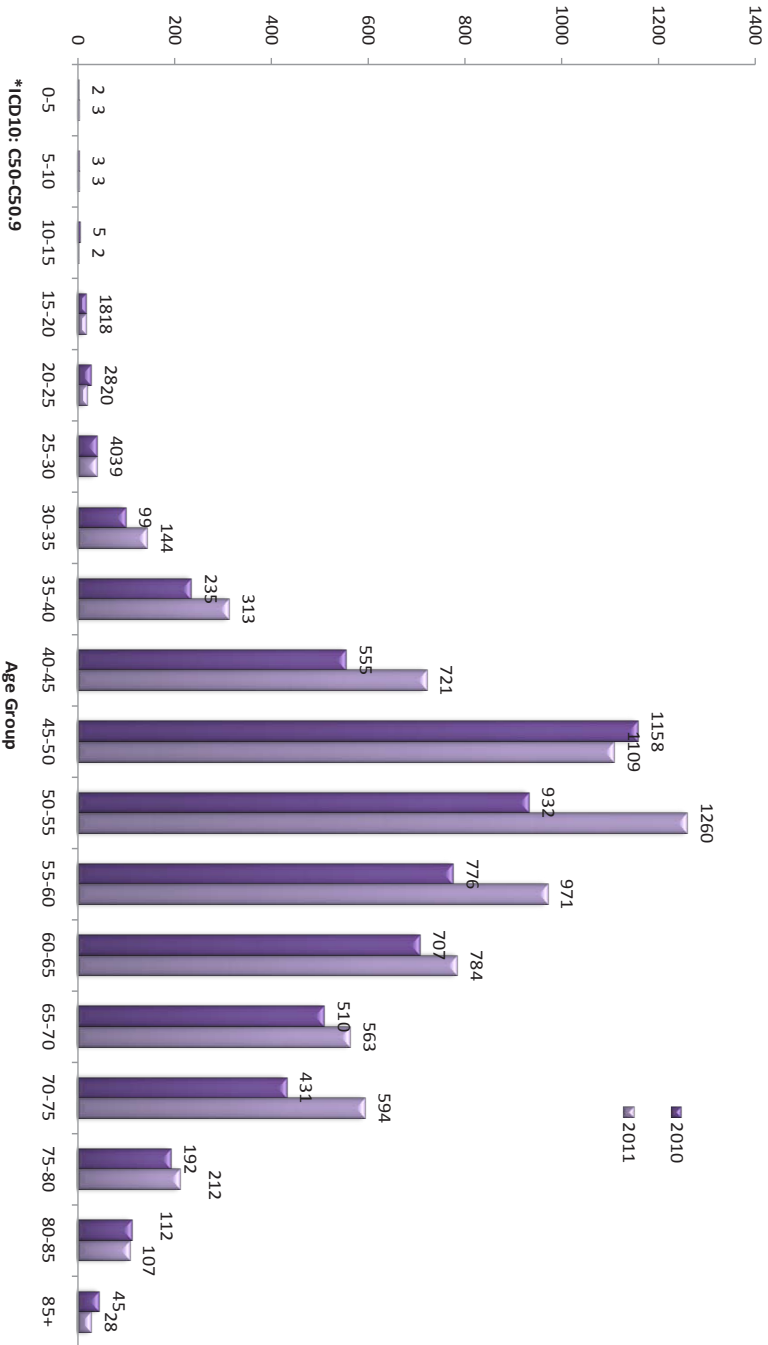
Graph 16: Percent Breast Ca out of total Female Neoplasms by Qada, 2011



Investigating the females hospitalized for cancer by district of origin, it turned out that 40.9% of those are Breast cancer cases with a proportion ranging from as low as 30.6% in Baalback to as high as 54.6% in Matn. Comparing with last year's percents, the lowest percent ever recorded then was for Baalback (22.9%). Taking a quick look at the comparison between the two years 2009 and 2010, there are districts with a significant increase in percent of Breast Ca out of total female neoplasms (Aley, Baalback, Batroun, Beirut, West Bekaa, Bint jbeil, Hermel, Kesserwan, Zahle, and Marjeyoun), while Koura experienced a significant drop in that percent, with a National increase by 2.6%.

Breast Cancer is spread over all age groups with a peak of cases in the age group 45-50. There were 1742 breast cancer female patients admitted 7088 times either for surgery or chemotherapy. There was an increase in the number of cases between 2011 and 2010, which could be due to increased awareness and hence early diagnosis. The shift in peak cases to older age groups deserves further investigation.

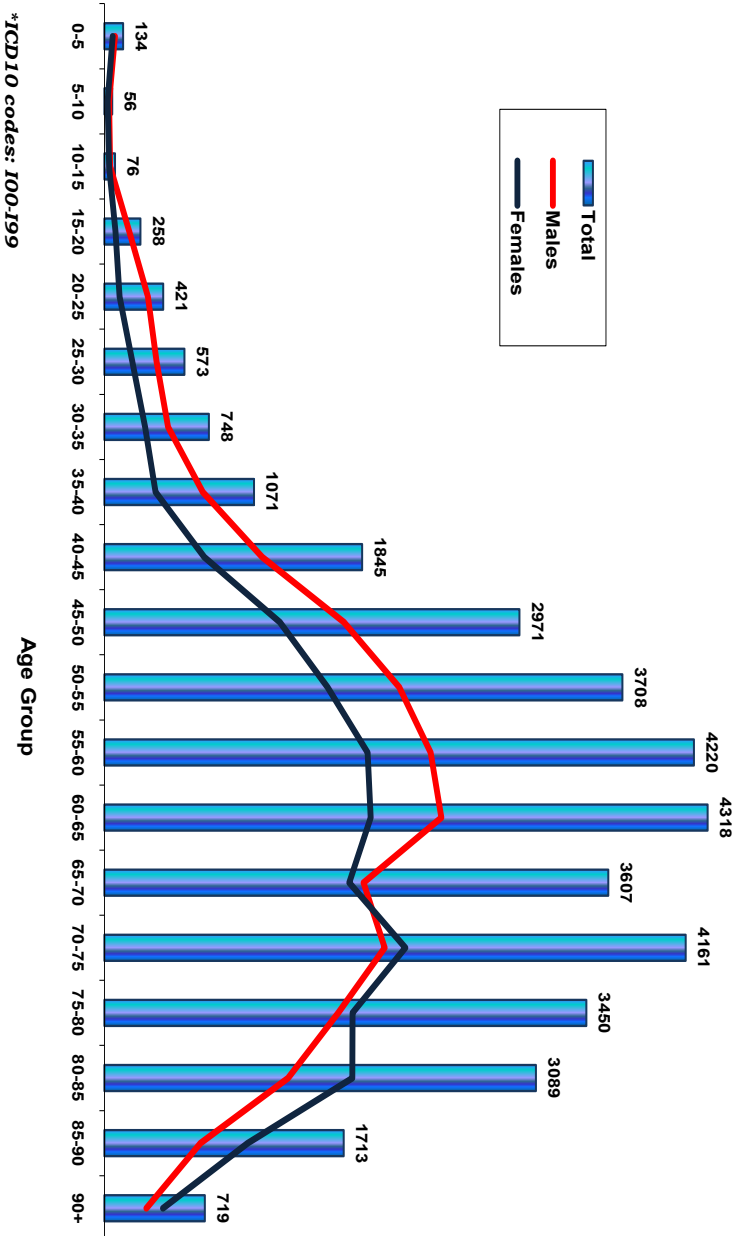
Graph 17: Hospitalized Cases of Malignant Neoplasms of the Breast* by Age, 2010-2011



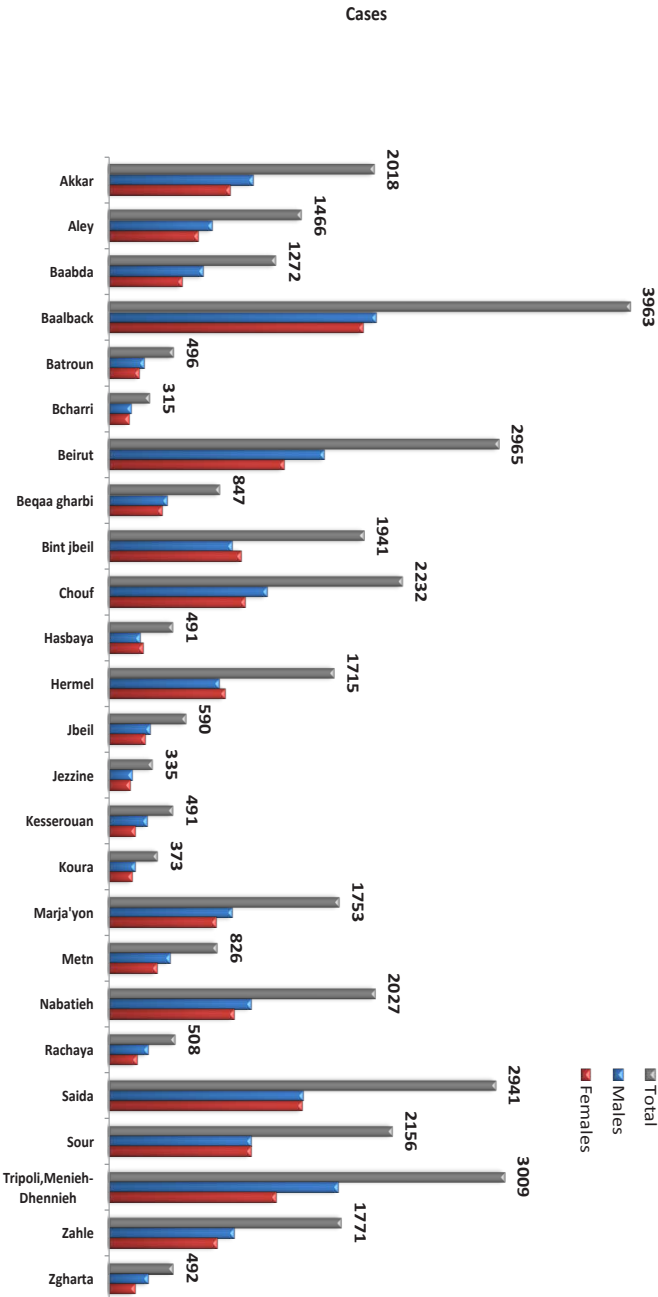


Graph 18: MOPH Subsidized Hospitalized Cardiovascular** Cases By Gender and Age Group, 2011

Cases



The highest number of cases of cardiovascular disease occurs between the ages of 60-65 years old. The male cases peak in that age group, while female cases peak at a higher age (70-75 years old).



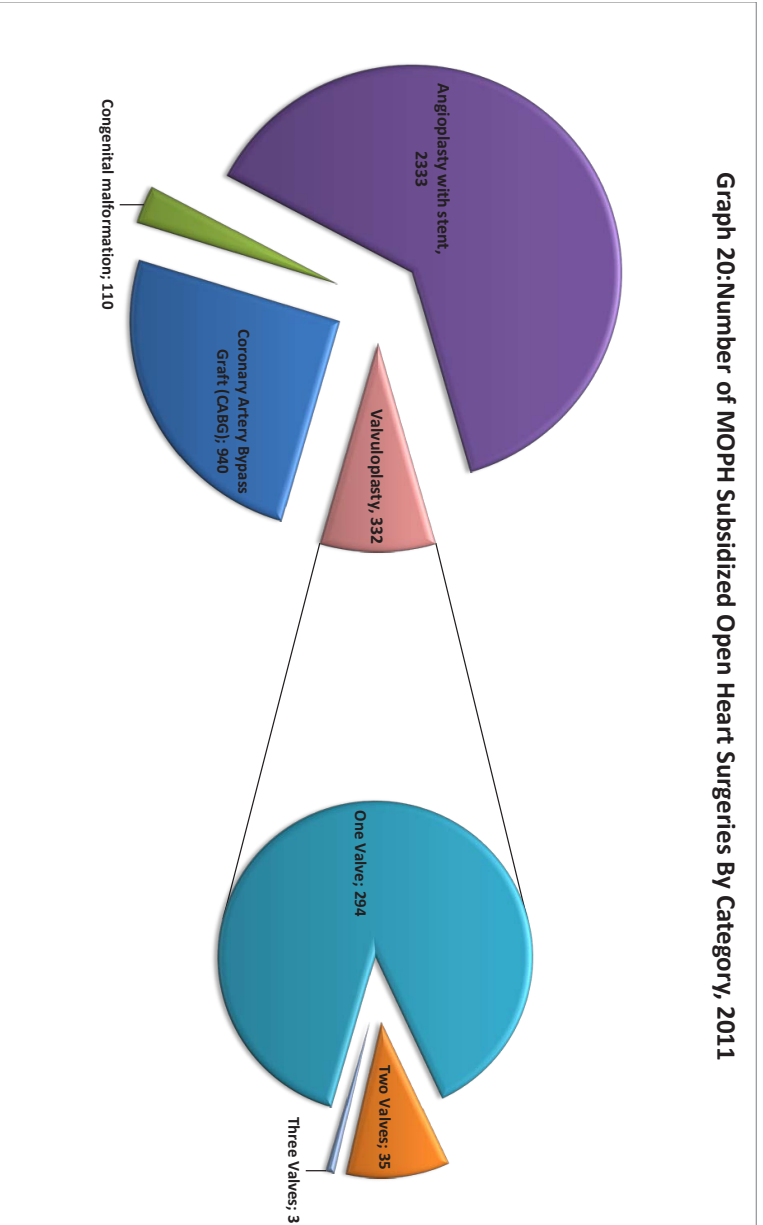
Graph 19: MOPH Subsidized Hospitalized Cardiovascular* Cases By Gender and Qada, 2011

When examined by gender and District, the cases of cardiovascular disease showed a peak in Baalback district, with significant differences between districts and more than 50% of the cases clustered in 7 districts where this calls for priority in prevention and early treatment policies.

*ICD10 codes: I00-I99



Graph 20: Number of MOPH Subsidized Open Heart Surgeries By Category, 2011



3,855 applications for open heart surgeries were presented to the open heart committee at the MOPH during 2011. 150 were refused for different reasons and 3,715 were accepted for coverage. The cases were partitioned as 131 pediatric cases, 110 congenital malformations, 332 valvuloplasty, 2,333 angioplasty with stent and 940 Coronary Artery Bypass Graft (CABG).

Table 11: HIV/AIDS Incidence in Lebanon, 2011

Number of new Reported Cases up to November 2011 is 109	
Number of cumulative Cases till November 2011: 1455	
Stage of the Disease	
HIV	33.00%
AIDS	34.00%
Not specified	33.00%
Gender	
Males	93.00%
Females	7.00%
Age Group	
Less than thirty	28.00%
Between thirty one and Fifty	30.00%
Above fifty one	9.00%
Not specified	33.00%
Mode of Transmission	
Sexual	51.00%
Blood Transfusion	*1%
IDU	1.00%
Perinatal	0.00%
Not specified	47.00%
Sexual Behavior	
Homosexual	22.00%
Bisexual	0.90%
Heterosexual	27.50%
Not specified	49.60%
Recent Travel History	
Yes	28.00%
No	72.00%

* Blood transfusion case occurred outside Lebanon

There are 109 newly reported cases of HIV/AIDS reported to the National AIDS Program (NAP) till November 2011, and a cumulative number of 1455 cases, 28% of whom have a recent travel history and 28% have an age less than 30.



In general Polio immunization rates are high all over the country with a national average of 96%, noting that the lowest immunization rate is for that of Minieh-Dhennieh district with 88%. The national average. National averages for DPT3, measles and HBV3 are 95%, 98% and 95%, respectively. It is worth approaching the coverage figures with caution regarding possible denominator errors related to place of origin as compared to the actual place of residence of the population.

Table 12: National Immunization Coverage Rates For Polio by Qada, 2011

Qada	OPV3 %	القضاء
Batroun	96	البترون
West Beqaa	98	البقاع الغربي
Chouf	94	الشوف
Koura	93	الكورة
Metn	95	المتن
Nabatieh	93	النبطية
Hermel	96	الهرمل
Bcharri	91	بشري
Baabda	98	بعبا
Baalback	92	بعبك
Bint Jbeil	92	بنت جبيل
Beirut	92	بيروت
Jbeil	90	جبيل
Jezzine	94	جزين
Hasbaya	93	حاصبيا
Rachaya	93	راشيا
Zahleh	97	زحلة
Zgharta	99	زغرتا
Sour	90	صور
Saida	92	صيدا
Minieh-Dhennieh	88	المنية الضنية
Tripoli	93	طرابلس
Aley	96	عاليه
Akkar	91	عكار
Kesserwan	92	كسروان
Marjeyoun	90	مرجعيون
Total	96	المجموع

Table 13: Cases of Notifiable Diseases Reported to the MOPH Epidemiologic Surveillance Unit by month, 2011

	TOTAL	Jan	Feb	Mar	Apr	May	Jun	Jul	Aug	Sep	Oct	Nov	Dec
Vaccine Preventable Diseases													
Acute Flaccid Paralysis	25	2	3	3	3	1	2	1	1	1	3	2	3
Acute Poliomyelitis	0	0	0	0	0	0	0	0	0	0	0	0	0
Diphtheria	0	0	0	0	0	0	0	0	0	0	0	0	0
Measles	9	1	1	0	0	1	1	0	1	0	1	2	1
Mumps	12	0	1	2	1	1	0	1	1	1	1	3	0
Pertussis	7	0	0	0	1	0	1	1	2	2	0	0	0
Rabies	0	0	0	0	0	0	0	0	0	0	0	0	0
Rubella	4	0	0	1	1	1	0	0	0	0	0	1	0
Tetanus	2	0	0	1	0	0	0	0	0	1	0	0	0
Neonatal tetanus	0	0	0	0	0	0	0	0	0	0	0	0	0
Viral Hepatitis B	168	19	21	14	8	9	16	19	11	15	15	7	14
Food & Water Borne Diseases													
Brucellosis	134	8	20	5	13	12	15	20	15	8	7	6	5
Cholera	0	0	0	0	0	0	0	0	0	0	0	0	0
Dysentery	186	11	13	5	6	11	27	29	21	26	13	16	8
Food Poisoning	311	4	23	19	5	12	17	85	14	81	19	21	11
Hydatid Cyst	12	2	0	2	0	1	3	1	0	0	1	2	0
Parasitic Worms	15	2	0	0	2	4	1	5	1	0	0	0	0
Trichinosis	0	0	0	0	0	0	0	0	0	0	0	0	0
Typhoid Fever	362	12	17	21	17	16	42	54	49	51	51	21	11
Viral Hepatitis A	448	34	26	30	27	10	9	26	44	54	71	50	67
Other Diseases													
Bilharziasis	0	0	0	0	0	0	0	0	0	0	0	0	0
Creutzfeldt Jakob Disease	1	0	0	1	0	0	0	0	0	0	0	0	0
Ebola	0	0	0	0	0	0	0	0	0	0	0	0	0
Gonorrhoea	4	0	1	1	0	0	0	0	1	0	0	0	1
Leishmaniasis	5	2	0	1	1	0	0	1	0	0	0	0	0
Leprosy	3	0	0	0	2	0	1	0	0	0	0	0	0
Malaria	24	2	1	2	0	4	0	4	7	3	1	0	0
Meningitis	137	14	5	17	9	14	11	17	13	12	1	8	16
Plague	0	0	0	0	0	0	0	0	0	0	0	0	0
Syphilis	13	1	0	0	1	1	0	1	0	4	3	2	0
Typhus	7	0	0	1	1	1	0	1	3	0	0	0	0
Viral Hepatitis C	72	5	1	10	4	13	8	3	7	5	6	7	3
Yellow Fever	0	0	0	0	0	0	0	0	0	0	0	0	0

Epidemiology Surveillance Unit

The Epidemiological Surveillance Unit at the MOPH receives notifications about vaccine preventable diseases , food and water borne diseases as well as other forms of disease. 168 cases of Hepatitis B, 448 cases of Hepatitis A, 362 cases of typhoid fever, and 137 cases of Meningitis were reported during 2011. It is worth mentioning that the number of cases of Malaria is incomplete here with 24 reported cases, while the National number as delivered by the Malaria Control Office of the MOPH, which is the official body to report on Malaria, is 83 cases for 2011.



When analyzed by gender, it was shown that males are more than females in all reported diseases except for some like Acute Flaccid Paralysis, Dysentery, and food poisoning, where the number of female cases exceeds that of the males.

Table 14: Cases of Notifiable Diseases Reported to the MOPH Epidemiologic Surveillance Unit by age groups, 2011

	TOTAL	0-4 years	5-9 years	10-19 years	20-39 years	40-59 years	60+ years	Unknown age	Male	Female	Sex unknown
Vaccine Preventable Diseases											
Acute Flaccid Paralysis	25	7	9	6	1	2	0	0	11	14	0
Acute Poliomyelitis	0	0	0	0	0	0	0	0	0	0	0
Diphtheria	0	0	0	0	0	0	0	0	0	0	0
Measles	9	7	1	0	1	0	0	0	3	6	0
Mumps	12	6	4	1	1	0	0	0	7	5	0
Pertussis	7	7	0	0	0	0	0	0	3	4	0
Rabies	0	0	0	0	0	0	0	0	0	0	0
Rubella	4	3	0	1	0	0	0	0	2	2	0
Tetanus	2	0	0	1	1	0	0	0	1	1	0
Neonatal tetanus	0	0	0	0	0	0	0	0	0	0	0
Viral Hepatitis B	168	1	1	4	83	46	20	13	99	69	0
Food & Water Borne Diseases											
Brucellosis	134	5	10	21	40	30	25	3	81	53	0
Cholera	0	0	0	0	0	0	0	0	0	0	0
Dysentery	186	57	30	12	40	24	23	0	86	100	0
Food Poisoning	311	22	48	65	96	50	13	17	141	170	0
Hydatid Cyst	12	1	0	0	2	7	1	1	7	5	0
Parasitic Worms	15	0	1	0	7	2	3	2	4	11	0
Trichinosis	0	0	0	0	0	0	0	0	0	0	0
Typhoid Fever	362	110	47	52	66	32	48	7	196	166	0
Viral Hepatitis A	448	48	130	172	83	7	1	7	256	192	0
Other Diseases											
Bilharziasis	0	0	0	0	0	0	0	0	0	0	0
Creutzfeld Jakob Disease	1	0	0	0	0	0	1	0	1	0	0
Ebola	0	0	0	0	0	0	0	0	0	0	0
Gonorrhea	4	0	0	0	4	0	0	0	4	0	0
Leishmaniasis	5	2	0	0	2	1	0	0	3	2	0
Leprosy	3	0	0	0	2	1	0	0	2	1	0
Malaria	24	2	0	0	16	4	1	1	16	8	0
Meningitis	137	49	20	19	18	15	14	2	93	44	0
Plague	0	0	0	0	0	0	0	0	0	0	0
Syphilis	13	0	0	0	8	1	1	3	4	9	0
Typhus	7	0	1	0	5	1	0	0	4	3	0
Viral Hepatitis C	72	0	1	3	22	25	18	3	48	23	1
Yellow Fever	0	0	0	0	0	0	0	0	0	0	0

Epidemiology Surveillance Unit

Table 15: Cases of Notifiable Diseases Reported to the MOPH Epidemiologic Surveillance Unit by region, 2011

	TOTAL	North	Beqaa	Nabatieh	South	Mount-Lebanon	Beirut	Unknown
Vaccine Preventable Diseases								
Acute Flaccid Paralysis	25	5	0	3	3	12	2	0
Acute Poliomyelitis	0	0	0	0	0	0	0	0
Diphtheria	0	0	0	0	0	0	0	0
Measles	9	2	0	1	3	3	0	0
Mumps	12	3	4	0	3	0	2	0
Pertussis	7	1	2	1	0	2	1	0
Rabies	0	0	0	0	0	0	0	0
Rubella	4	1	2	0	0	1	0	0
Tetanus	2	2	0	0	0	0	0	0
Neonatal tetanus	0	0	0	0	0	0	0	0
Viral Hepatitis B	168	22	9	15	12	53	15	42
Food & Water Borne Diseases								
Brucellosis	134	31	52	12	6	24	1	8
Cholera	0	0	0	0	0	0	0	0
Dysentery	186	35	2	5	3	136	1	4
Food Poisoning	311	32	60	18	11	110	30	50
Hydatid Cyst	12	1	3	0	0	6	0	2
Parasitic Worms	15	0	0	1	0	0	14	0
Trichinosis	0	0	0	0	0	0	0	0
Typhoid Fever	362	79	66	57	19	77	32	32
Viral Hepatitis A	448	128	183	19	17	72	14	15
Other Diseases								
Bilharziasis	0	0	0	0	0	0	0	0
Creutzfeld Jakob Disease	1	0	0	0	0	1	0	0
Ebola	0	0	0	0	0	0	0	0
Gonorrhoea	4	0	0	0	0	2	1	1
Leishmaniasis	5	2	0	0	0	2	1	0
Leprosy	3	0	1	0	0	2	0	0
Malaria	24	8	0	2	0	8	2	4
Meningitis	137	41	17	12	11	47	8	1
Plague	0	0	0	0	0	0	0	0
Syphilis	13	1	0	3	1	1	0	7
Typhus	7	0	0	0	0	7	0	0
Viral Hepatitis C	72	10	6	5	2	28	10	11
Yellow Fever	0	0	0	0	0	0	0	0

Epidemiology Surveillance Unit

The distribution of the diseases across the Mohafazats showed that the number of reported cases of Food poisoning, Dysentery, AFP and Viral Hepatitis B and C are highest in Mount Lebanon, while viral hepatitis A and Brucellosis are highest in the Beqaa, and North.



Table 16: Maternal Neonatal Mortality Notification System Statistics By Qada, 2011

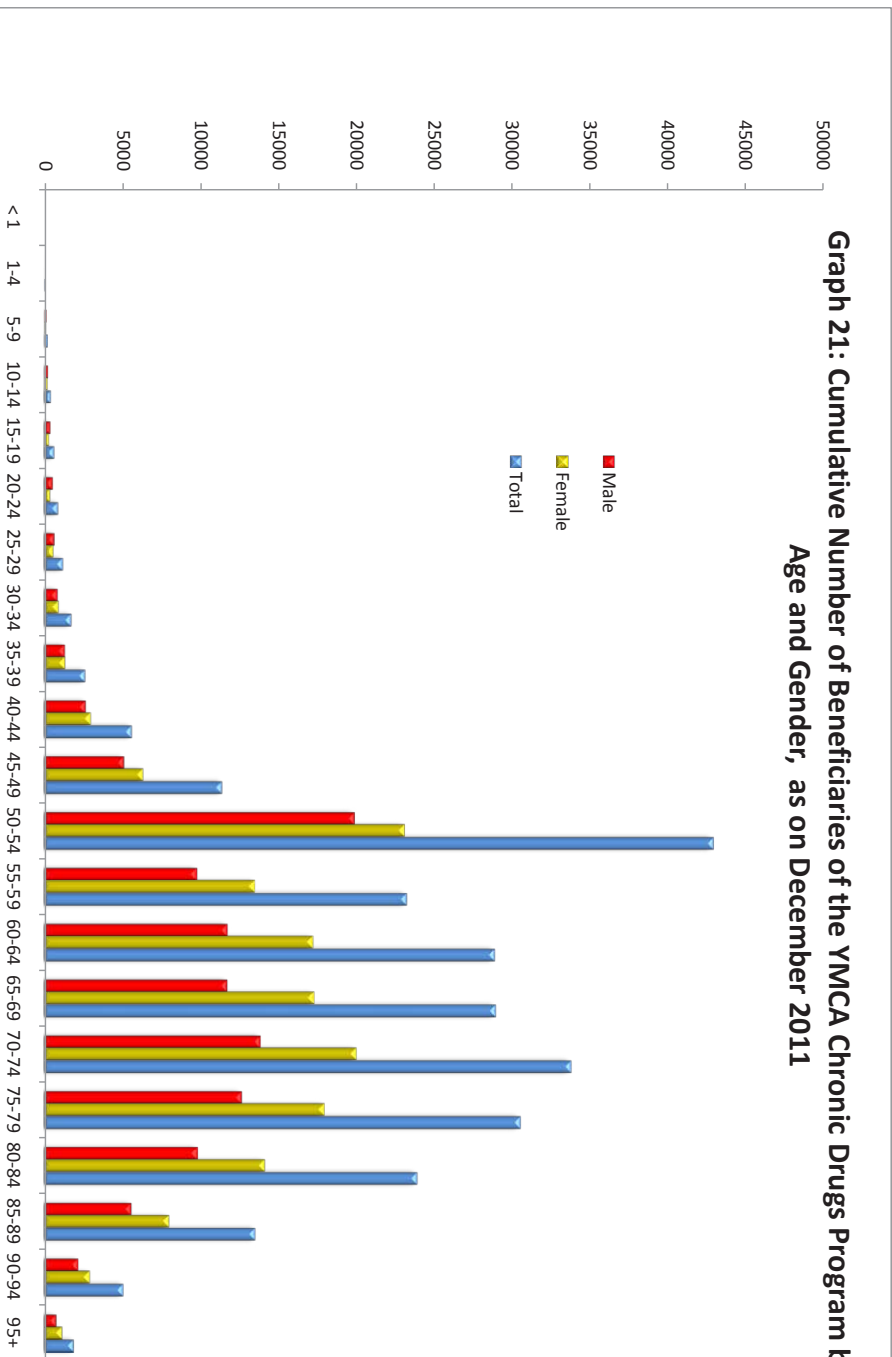
Qada	Births	Deliveries	Still Births	Intra Uterine Fetal Deaths	Abortions	Normal Vaginal Deliveries	Caesarian Section Deliveries	Maternal Deaths	Neonatal Deaths First Week	Neonatal Deaths Second Week	Twin Births	القضاء
Batroun	239	238	0	2	13	88	150	0	0	0	1	البيروت
West Bekaa	461	457	0	5	50	189	266	0	1	0	4	البيقاع الغربي
Chouf	1443	1426	5	22	356	714	716	1	3	0	17	المدون
Koura	1749	1706	3	13	146	923	783	0	9	5	52	الكورة
Metn	5138	4993	4	45	421	2199	2797	0	10	1	140	المتن
Menieh-Dhennieh	685	681	3	12	146	505	176	0	2	0	4	المنية الدننية
Nabatieh	3097	3044	4	23	350	1236	1708	1	6	3	61	النبطية
Hermel	1056	1050	4	12	178	304	746	0	1	0	6	الهول
Behreh	22	22	0	1	1	12	10	0	0	0	0	بشري
Baabda	12563	12187	21	132	1568	6946	5358	2	53	6	268	بيدبا
Baalbak	3317	3252	4	46	429	1355	1897	2	7	3	65	بيطاك
Birt-Jbeil	670	665	2	7	136	366	299	0	0	0	6	بنت جبيل
Beirut	9129	8786	20	76	1077	4759	4025	5	25	20	348	بيروت
Jbeil	1630	1578	1	17	143	789	789	0	4	1	53	جبيل
Jezeine	0	0	0	0	0	0	0	0	0	0	0	جزين
Hashaya	31	30	0	0	16	16	14	0	0	1	1	حاصبيا
Rachaya	453	449	0	6	90	254	195	0	0	0	4	راشيا
Zahleh	5354	5246	10	75	505	2337	2902	0	14	5	115	زحلة
Zgharta	1752	1711	5	33	157	855	856	0	5	0	41	زغرتا
Sour	3333	3284	3	29	564	1826	1458	0	27	3	49	صور
Saida	7130	6962	7	81	1227	3528	3434	1	64	7	188	صيدا
Tripoli	10353	10229	15	118	1322	6753	3476	4	17	9	131	طرابلس
Aley	497	486	2	4	56	246	247	0	1	2	4	عاليه
Akar	5236	5157	6	97	604	3700	1457	3	19	8	92	عكر
Kesserwan	1219	1199	1	7	195	484	715	0	2	1	20	كسروان
Marjeyoun	784	777	2	20	161	421	356	0	3	0	8	مرجعيون
Grand Total	77341	75615	122	883	9911	40805	34830	19	273	75	1678	المجموع

The Ministry of Public Health has initiated at the beginning of 2011, a Maternal and Neonatal Mortality Notification System which gathers all births, neonatal and maternal deaths occurring in hospitals all over the country, in addition to other variables, like birth defects and birth weights. There were 19 maternal deaths in Lebanon during 2011, generating a Maternal Mortality Ratio of 25 per 100,000. When compared to the number of births registered in 2011 (97,887), and those that have occurred in 2011 and registered in 2011 (73,878), with the number of births that occurred inside hospitals which was 77,341. There are clearly around 4500 births which have occurred during 2011, and which still are not registered at the Ministry of Interior records, which gives an idea about the delay in registration.



The MOPH contracts with the Young Male Christian Association (YMCA) to purchase and distribute chronic diseases drugs in health centers all over Lebanon. So far, beneficiaries belong mostly to the age groups 50 and older, which is clearly due to the nature of distributed drugs. In addition, Females benefit from the program more than males.

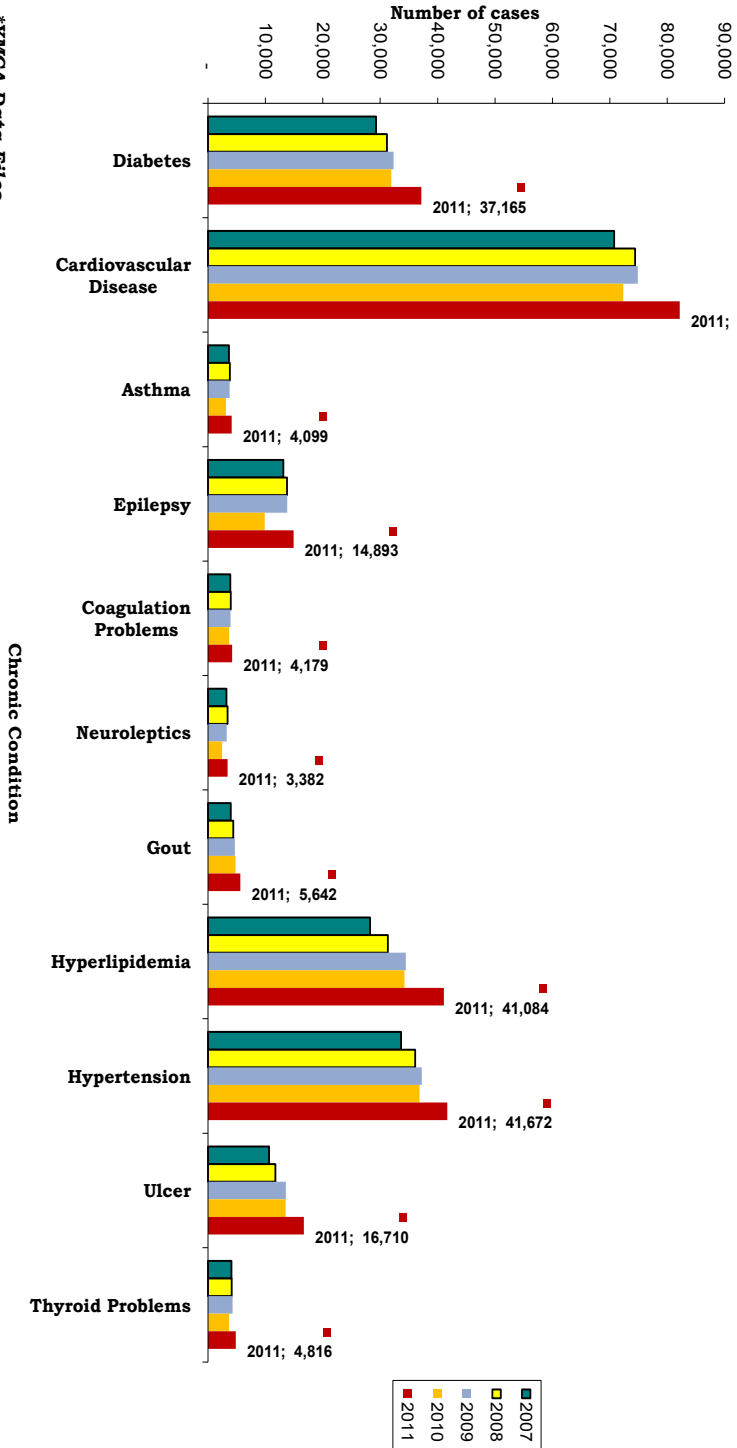
Graph 21: Cumulative Number of Beneficiaries of the YMCA Chronic Drugs Program by Age and Gender, as on December 2011





Over the years, beneficiaries have slightly increased in number across all categories of chronic conditions, while keeping the same trend of prevalence with cardiovascular disease being the most prevalent, followed respectively by Hypertension, Hyperlipidemia and Diabetes.

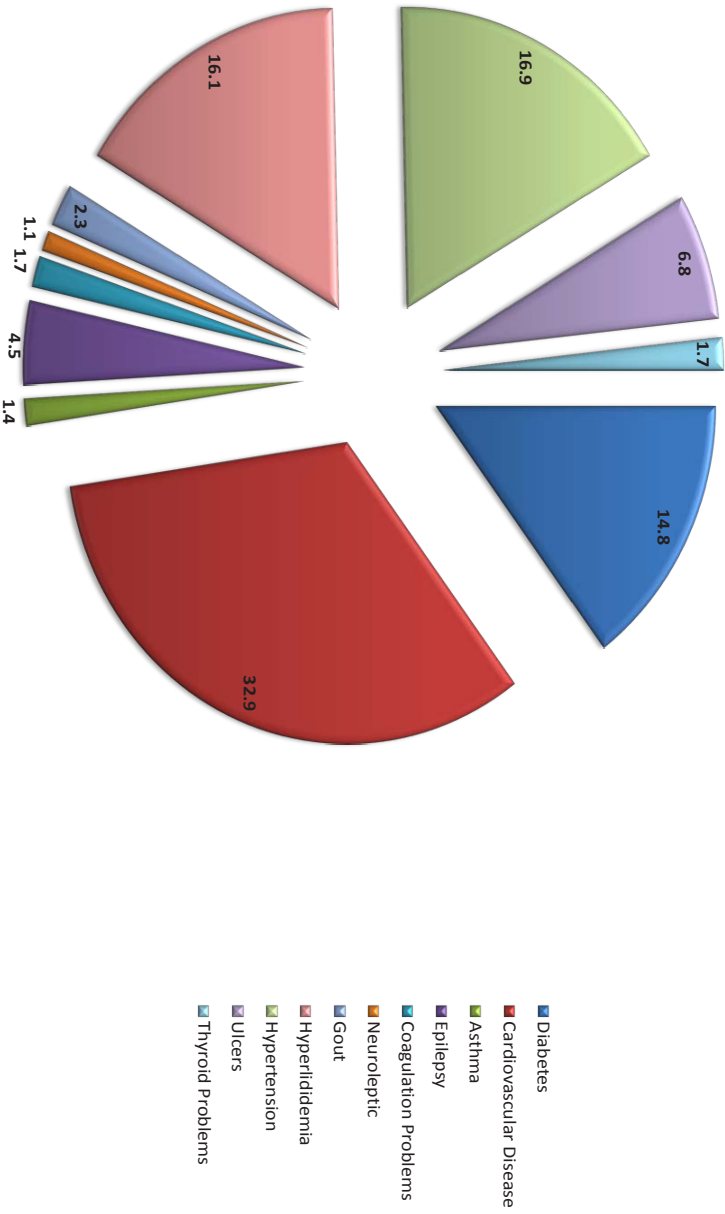
*YMCA Data Files



Graph 22: Cases of Chronic Conditions *, 2007-2011

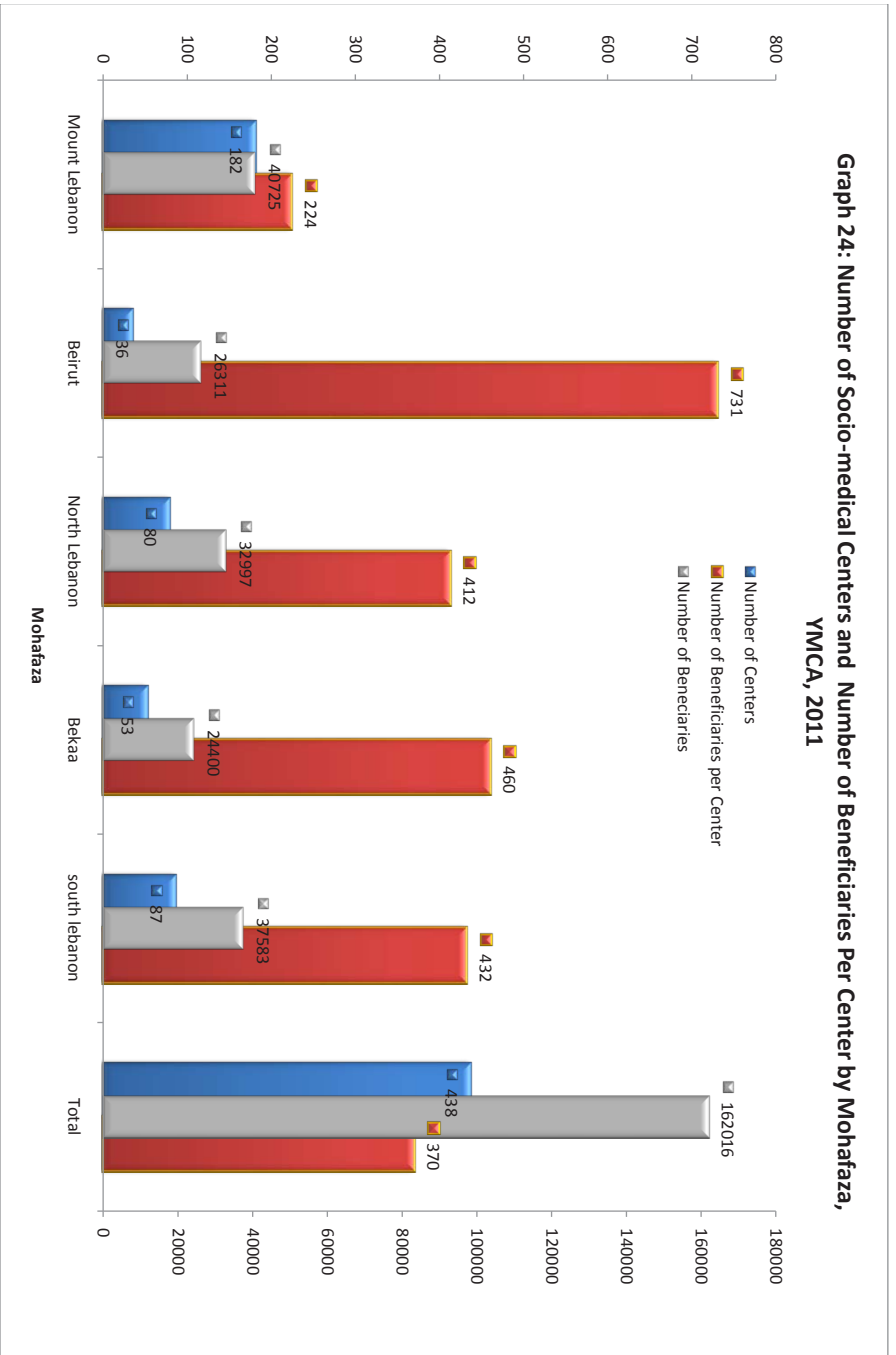
The prevalence of cardiovascular disease is highest among YMCA beneficiaries with 32.9%, followed by Hypertension (16.9%), Hyperlipidemia (16.1%), and Diabetes (14.8%).

Graph 23: Percent Prevalence of Chronic Conditions Among Users, YMCA 2011





Graph 24: Number of Socio-medical Centers and Number of Beneficiaries Per Center by Mohafaza, YMCA, 2011

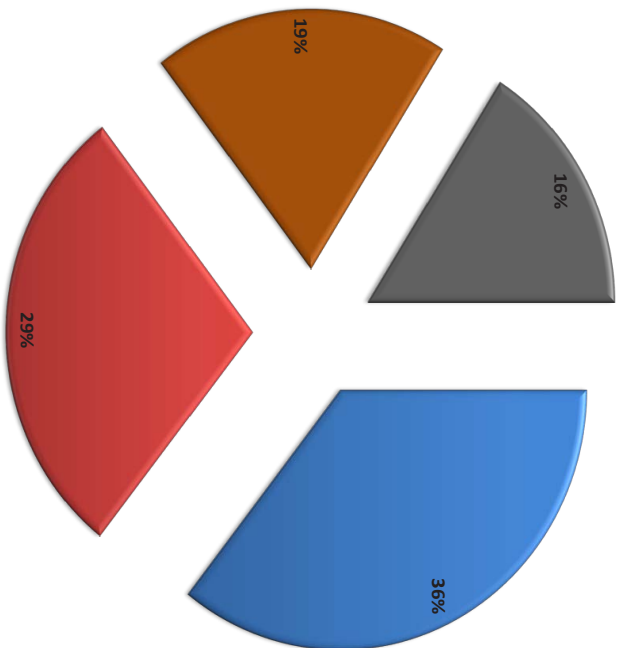


In 2011, there were 162,016 beneficiaries registered in the YMCA medical charts distributed over 438 centers in all Mohafazas with the majority in Mount Lebanon (182 centers). The Number of beneficiaries per center is highest in Beirut, though, and lowest in Mount Lebanon, with a national average of 370 beneficiaries per center.



Examining the YMCA records, we realized that around 64% of the beneficiaries have more than one chronic condition and 16% have 4 chronic condition or more which reflects associated morbidities and deserves further investigation.

Graph 25: Proportions of Co-Morbidities in Patients Suffering from Chronic Conditions, YMCA 2011 *

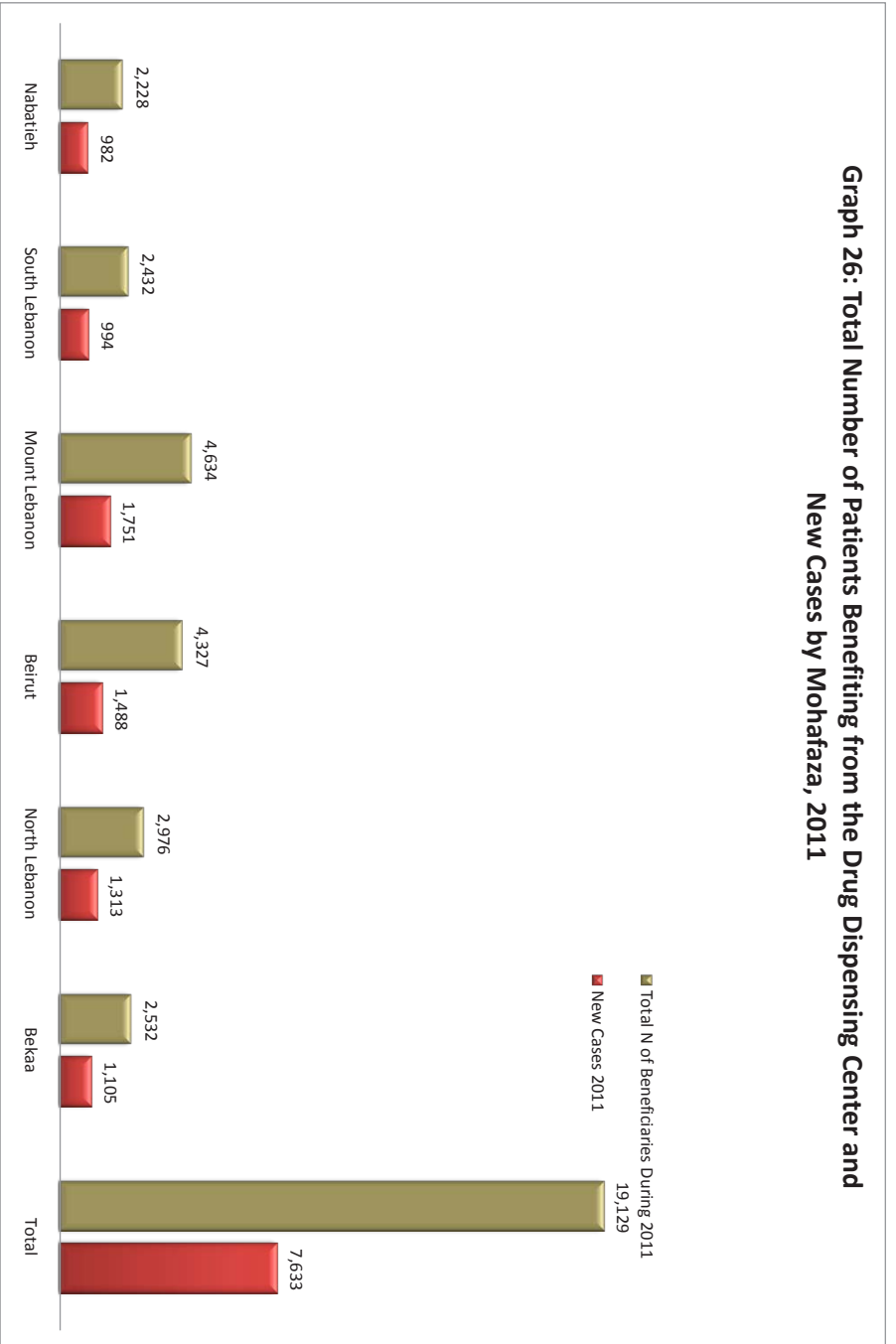


- One chronic condition
- Two chronic conditions
- Three chronic conditions
- 4 chronic conditions or more

*YMCA data files



Graph 26: Total Number of Patients Benefiting from the Drug Dispensing Center and New Cases by Mohafaza, 2011



The Drug Dispensing Center (DDC) of the MOPH distributes drugs free of charge for all eligible patients across categories of dreadful diseases. The budget of drug procurement which is increasing year after year is still not enough considering the increase in the number of cases of some diseases from one part, and the increase in the prices of some imported drugs due to the change in currencies. There were 19,129 beneficiaries during 2011, of whom 7,633 were newly enrolled patients in 2011. The majority of the beneficiaries are from Mount Lebanon, just as the peak incident cases.