

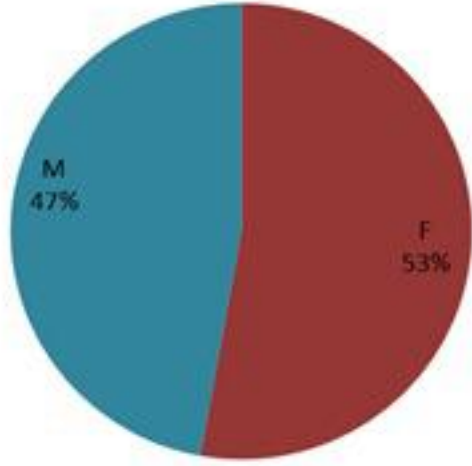
ترصد الكوليرا في لبنان 30 كانون الثاني 2023

الجمهورية اللبنانية
وزارة الصحة العامة
برنامج الترصد الوبائي

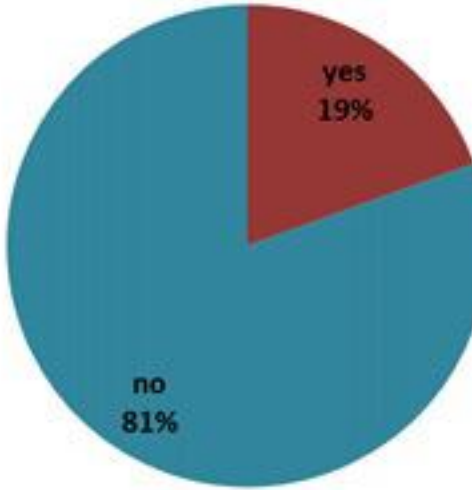


الخطوط الساخنة

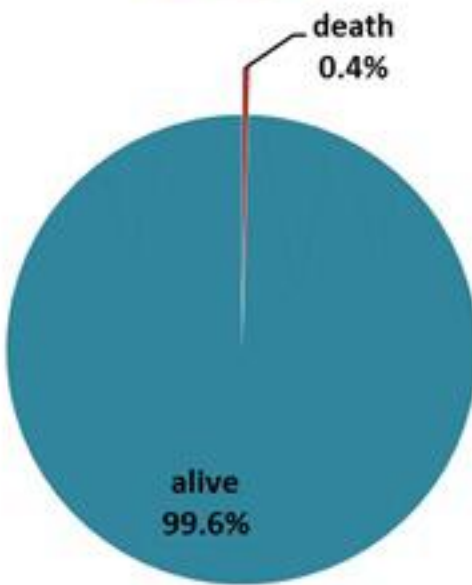
1760 (الصليب الأحمر)
1787 (وزارة الصحة)



حسب الجنس
(المشبهة والمتبنة)



حسب الاستشفاء
(المشبهة والمتبنة)



حسب تطور الحالة
(المشبهة والمتبنة)

الوفيات (المتبنة)		الحالات المثبتة		كافة الحالات المشبهة والمتبنة	
التراكمي	الجديدة (آخر 24 ساعة)	التراكمي	الجديدة (آخر 24 ساعة)	التراكمي	الجديدة (آخر 24 ساعة)
23	0	671	0	6331	8



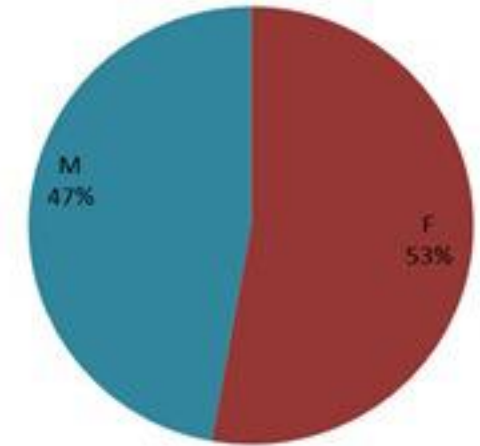
Cholera Surveillance Report

30 Jan 2023

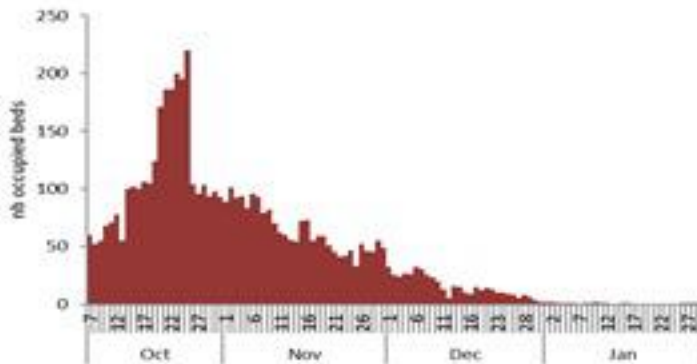
Call Centers
 1760 (Red Cross)
 1787 (MOPH)

All cases (suspected and confirmed)		Confirmed Cases		Deaths (confirmed)	
New (past 24 h)	Cumulative	New (past 24 h)	Cumulative	New	Cumulative
8	6331	0	671	0	23

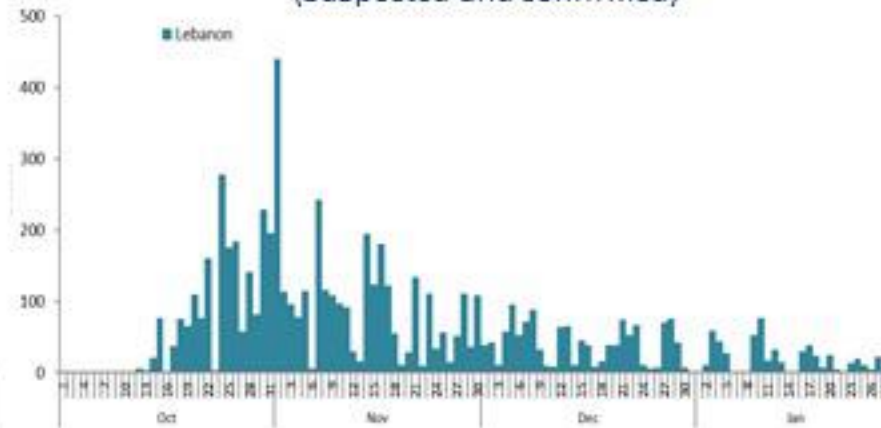
By Sex
(suspected and confirmed)



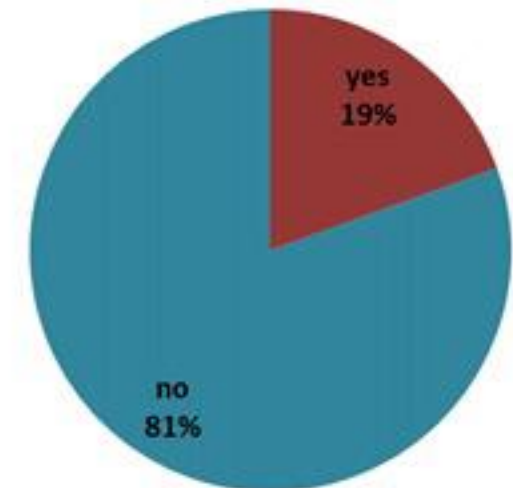
Occupied hospital beds
(suspected and confirmed)



By date of report
(suspected and confirmed)



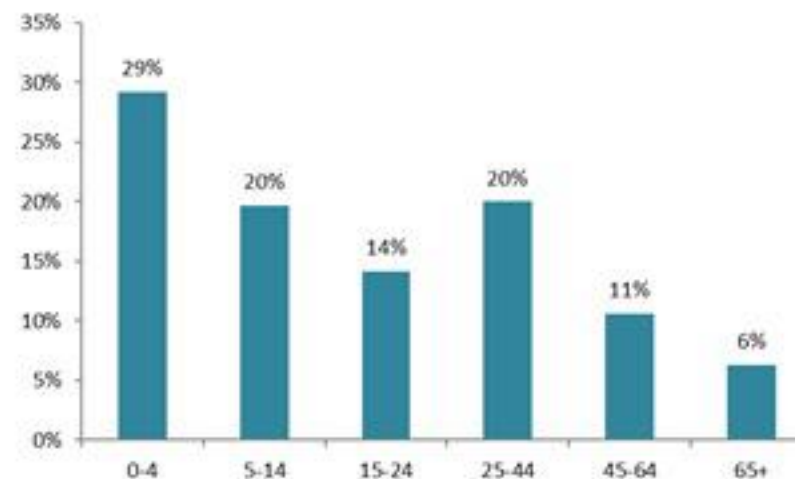
By Hospital Admission
(suspected and confirmed)



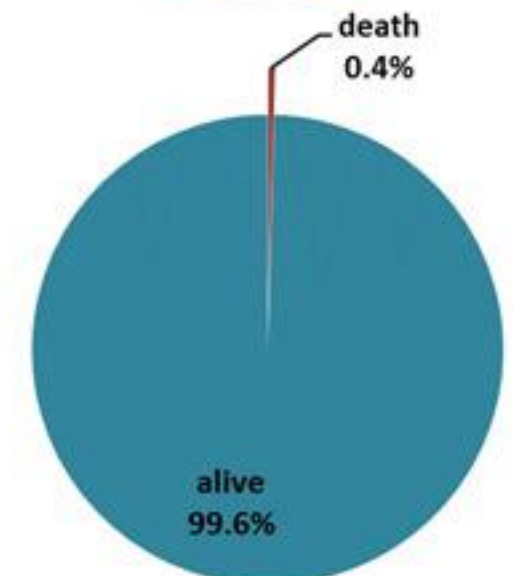
By locality (confirmed cases)



By age group
(suspected and confirmed cases)



By Outcome
(suspected and confirmed)

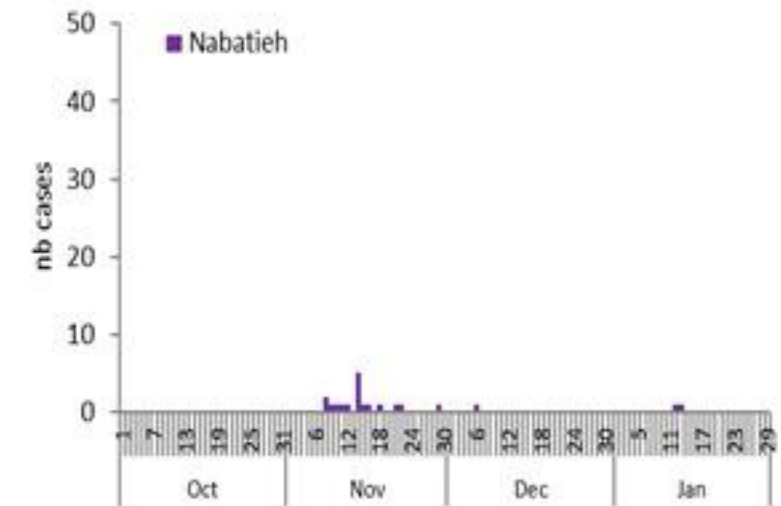
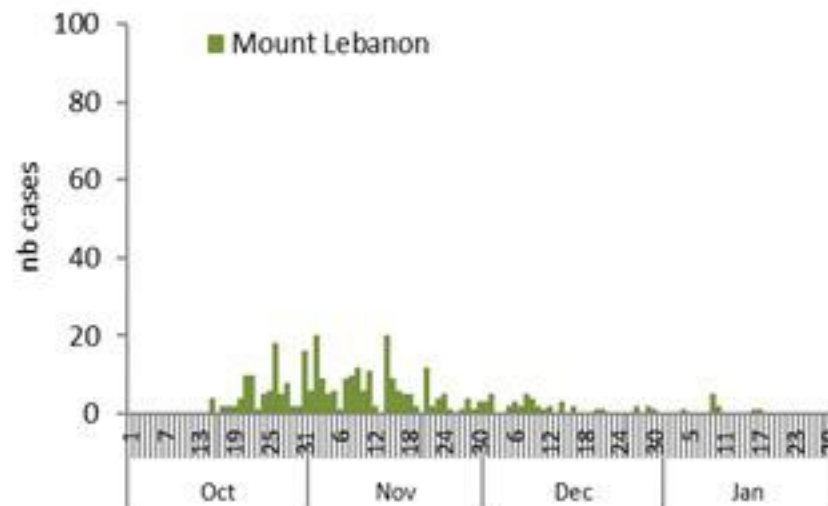
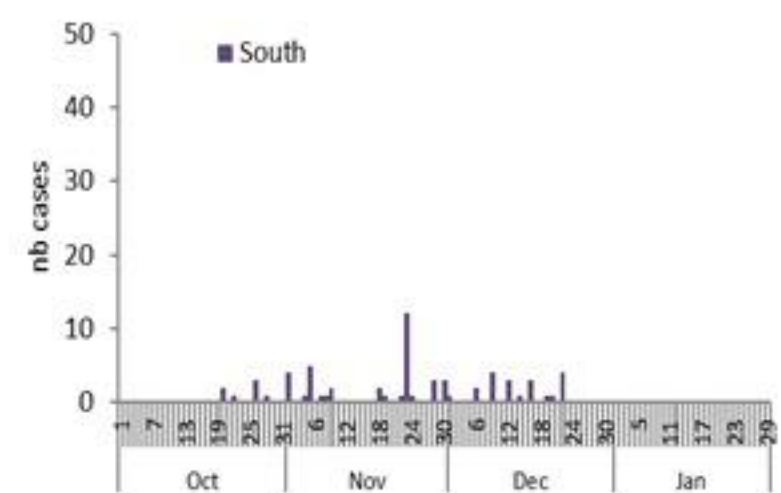
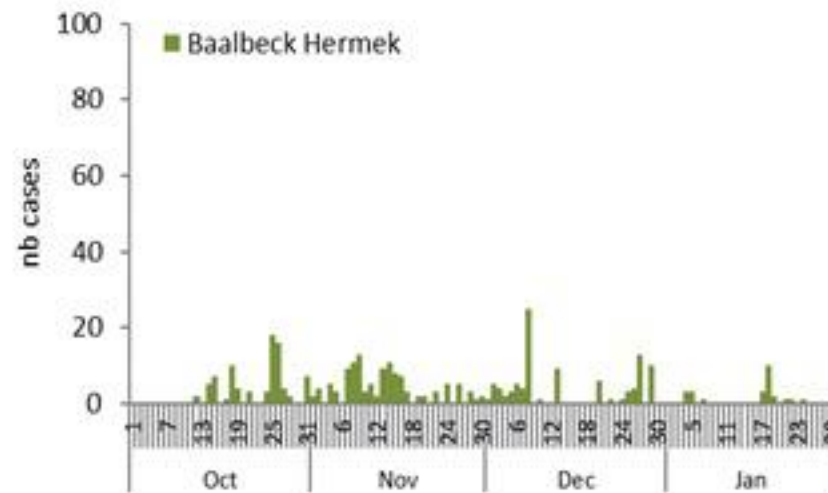
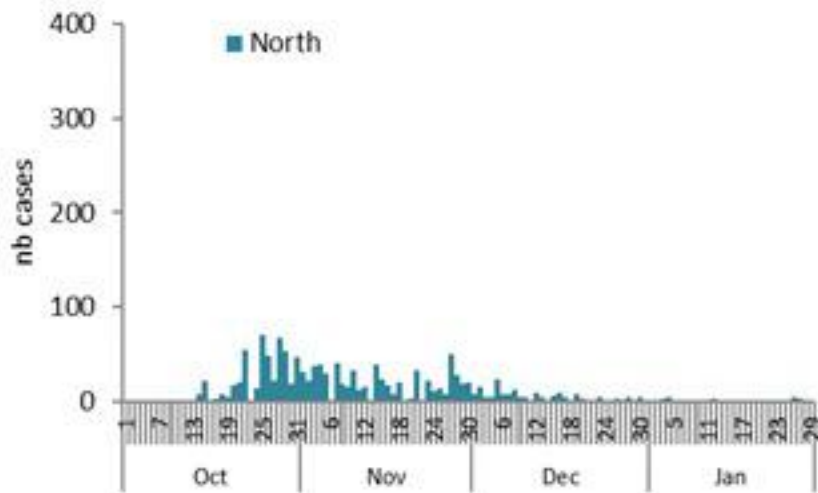
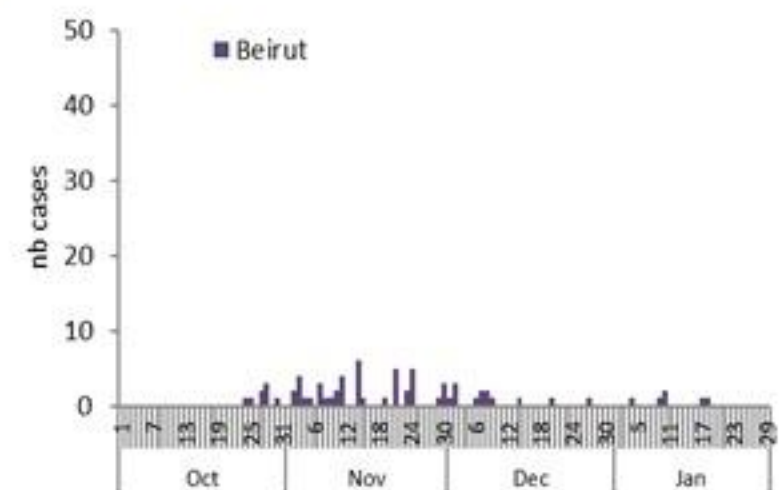
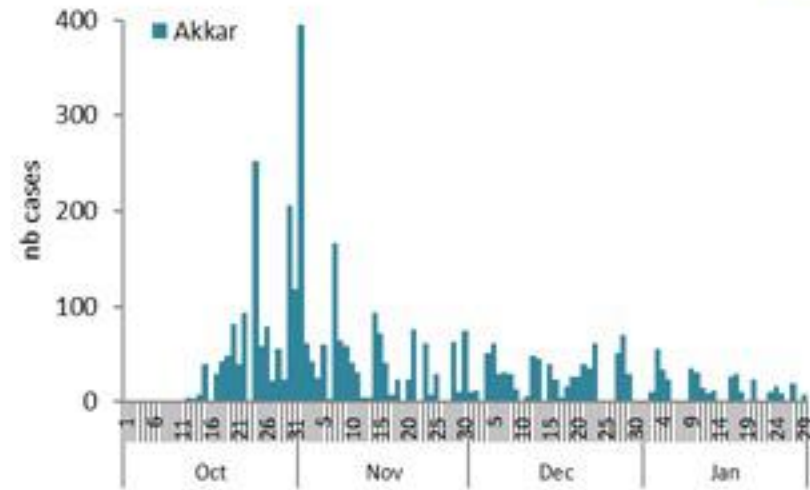


Cholera Surveillance Report

30 Jan 2023

Enicurves by date of reporting by province

(suspected and confirmed)

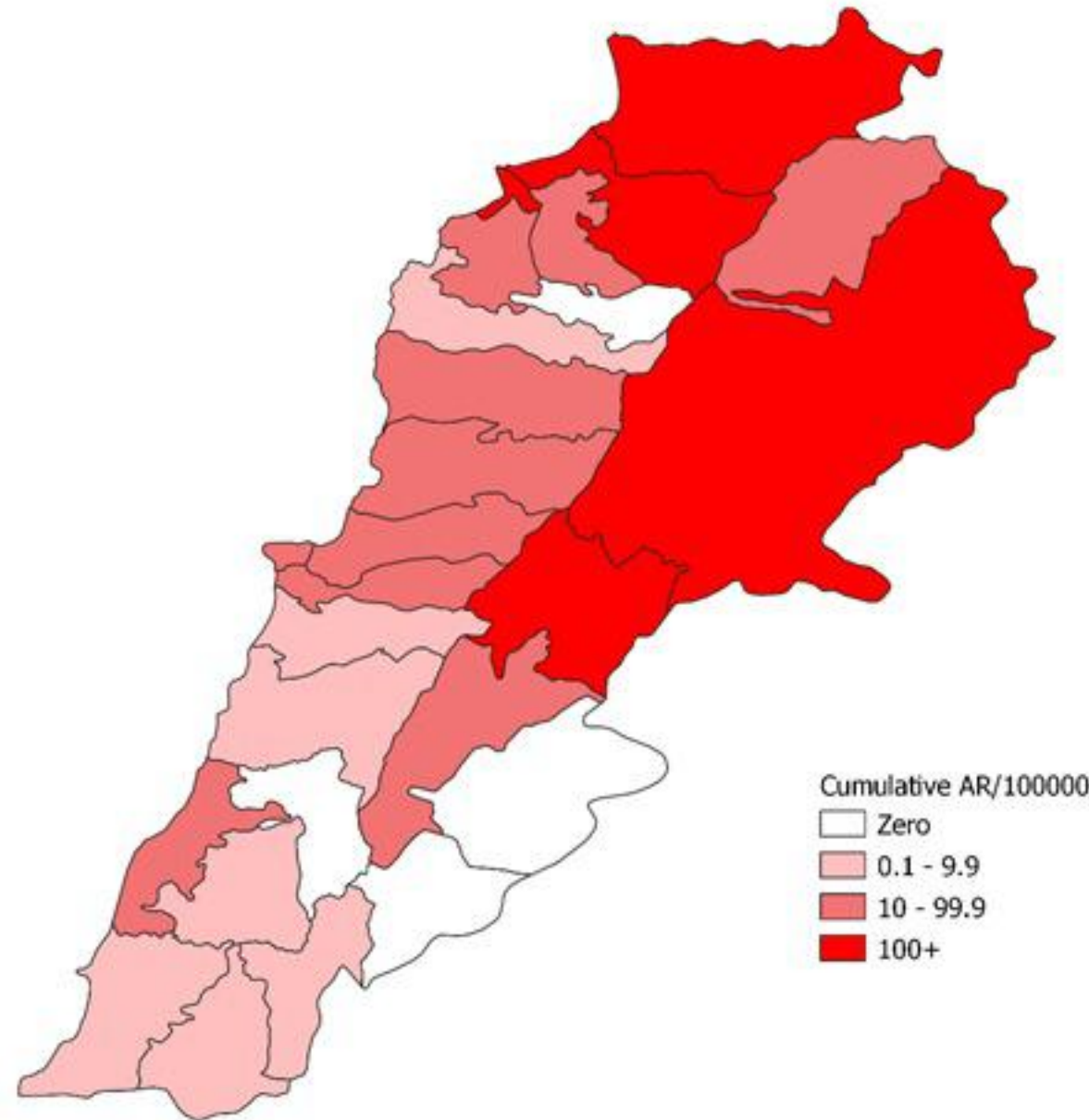


Cholera Surveillance Update

30 Jan 2023

4

Cumulative Attack Rate per 100,000 (suspected and confirmed)
نسبة الحدوث التراكمية لكل مئة ألف نسمة (الحالات المشتبهية والمثبتة)

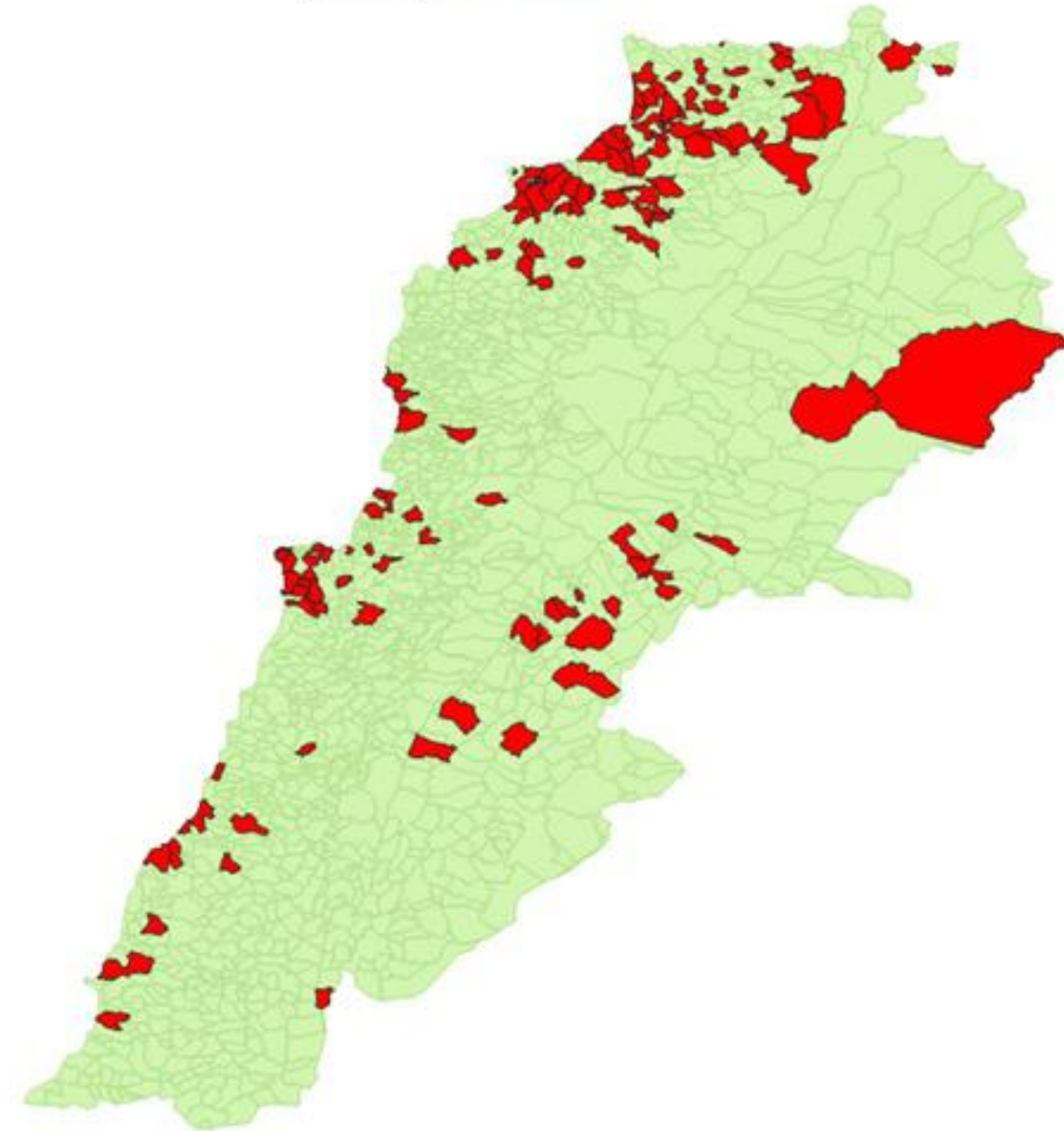


Cholera Surveillance Update

30 Jan 2023

5

By locality (confirmed)
حسب البلدة (المتبنة)



Figures in table are subject to modification following updates and data correction

Caza	Locality	Cases	Caza	Locality	Cases	
Akkar	Akkar Atika		Kiswan	Aintouna	1	
	Amayer/Quadi Khaled			Balfounh	1	
	Arqa / Marlayet Haddara			Bqaouta	7	
	Bebnine / Baddoua	16		Ghair	2	
	Beit Hajj/Koucha/Khreibit Jindi			Jounieh Ghadir	4	
	Bergayel			Jounieh Sabra	4	
	Bozblina			Yahchouch	1	
	Bireh			Zouk Mosbeh	3	
	Bqerzia			Koura	Aaba	1
	Cheikh Ayache / Chir Hmairine				Aahdiq	1
	Dahr Qambar /Hokr Gatteh				Basa	1
	Dabadeb		Bsama		1	
	Dinbou		Dahr Ain / Ras Maqoua		1	
	Fneydek		Rachdibbine		1	
	Halba		Kfar Aqa		1	
	Hayssa		Aadayssah		1	
	Hocuich		Majroun		Biklaha	1
	Jdeidat Qaytee				Broummara	1
	Kfar Harra			Bsalim	1	
	Kfar Melki			Daruna/Borj Hemmoud	2	
	Khane Hayat			Mansouriah	3	
	Khirbet Char			Zalqa	1	
	Kneisset Hnaldar			Minieh Danieh	Aadoua	1
	Kouachra				Assoun	4
	Koukikhat				Ain El Tineh	1
	Machha				Bahsa	1
	Majdala		Bakhaoun		4	
	Memneza		Bhanine / Zouk Bhanine		7	
	Mhamarah / Nahr Bsred / Abdeh	22	Bamaa		6	
	Minlara		Douniya		1	
	Mqyatec		Kfar Chollane		2	
	Quadi Jamous	13	Kfar Habou		1	
	Qaabrine / Tal Hayat		Merkaba	2		
	Qbalyat		Minieh	18		
	Qlayat Akkar		Qoualyeh	1		
	Qobet Chamra	17	Qattine	3		
	Rahbeh		Rihanih	35		
	Ransiyeh / Deir Dalloum		Sir Danieh	5		
	Saadine		Saïda	Rantoun	1	
	Tell Abbas Charqui			Bissariyeh	4	
	Tieil			Gharish	2	
	Zouq Haddara			Khawayeb	3	
	Zouq Hosnieh			Saïda	1	
	Aley	Aley		Saïland	1	
		Hay Selloum/Chouifat		Sour	Abbweyeh	1
	Baabda	Ain Roummaneh			Deir Qanoun Ain	4
		Borj Brajneh		Baddawi	16	
Ghbayroh/Chiyah/Sabra			Mina	7		
Hadath			Qobbah	21		
Haret Hirek			Tripoli Bab Raml	1		
Kfar Chima			Tripoli Gadias	2		
Mrejijh			Tripoli Madadine	1		
Baalbeck	Arsal	27	Tripoli Nour	1		
	Kfar Dabache		Tripoli Souayqa / Assan	3		
	Khodr		Tripoli Tabbaneh	21		
	Temnine Faouqa		Tripoli Zeitoun	15		
	Temnine Tahta		West Beqaa	Kamel Janou	1	
Younine		Kouhaya		1		
Batroun	Chikka			Saghbina	1	
	Achrafieh			Zahleh	Aali Nahri	2
Beirut	Ain Miralssch				Bar Elias	2
	Hamra		Dalhameh		2	
	Mdsour / Mar Mikhael		Harouch Mandra		1	
	Msaïtbeh		Hawch Ormana		7	
	Zaarouriyeh		Majdal Anjar		1	
Chouf	Amchit		Qob Elias		9	
	Ehmej		Raït		11	
	Fidar		Saïdayn		11	
	Halate		Tadabaya		2	
	Jbeil		Zahleh Madaka	2		
	Jbeil	Mastita		Zghorta	Aalma	1
					Andoh	1
			Kfar Olayous		2	
			Majdalya Zghorta		7	
			Mirata / Faour		3	
			Sabwã		1	
			Zghorta		5	