

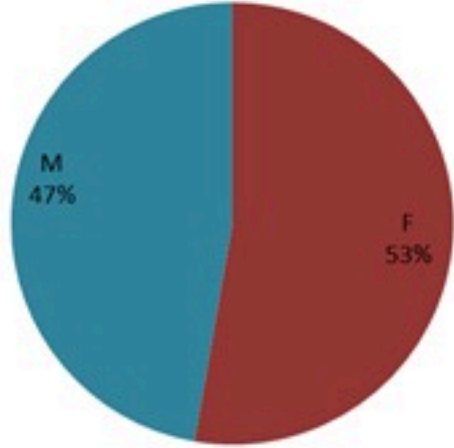
# ترصد الكوليرا في لبنان 5 كانون الاول 2022

الجمهورية اللبنانية  
وزارة الصحة العامة  
برنامج الترصد الوبائي

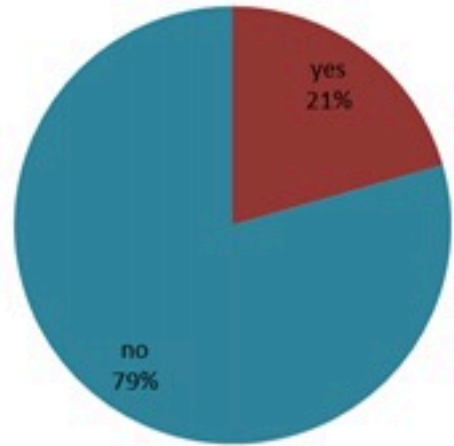


## الخطوط الساخنة

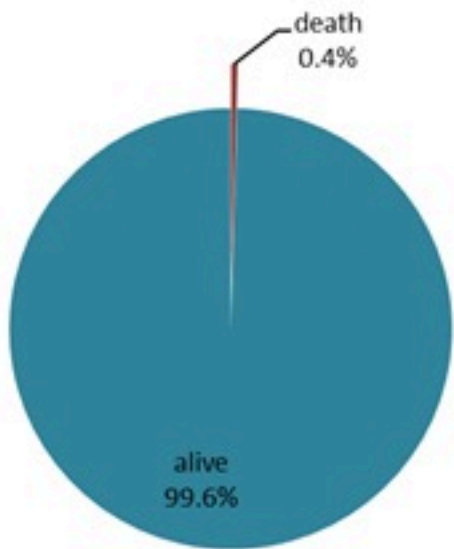
1760 (الصليب الأحمر)  
1787 (وزارة الصحة)



حسب الجنس  
(المشبهة والمثبتة)



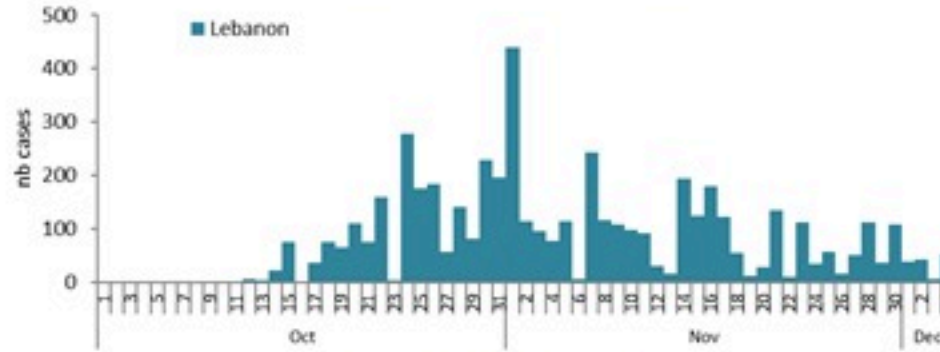
حسب الاستشفاء  
(المشبهة والمثبتة)



حسب تطور  
الحالة  
(المشبهة والمثبتة)

الوفيات (المشبهة والمثبتة)		الحالات المثبتة		كافة الحالات المشبهة والمثبتة	
التراكمي	الجديدة	التراكمي	الجديدة (آخر 24 ساعة)	التراكمي	الجديدة (آخر 24 ساعة)
22	2	652	0	4827	52

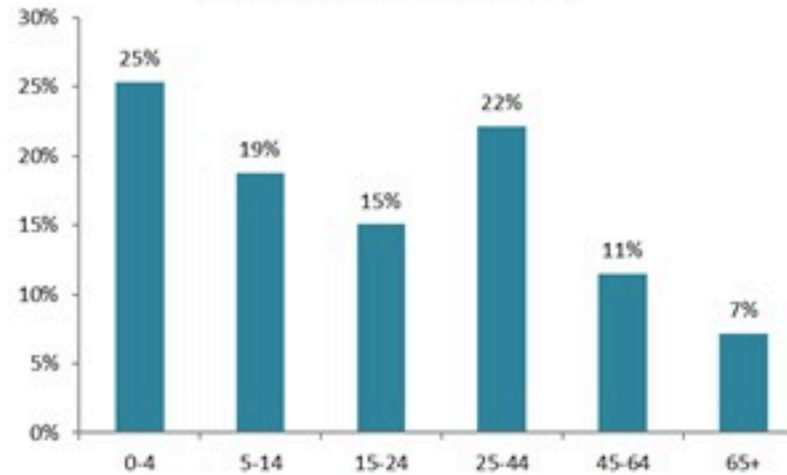
حسب تاريخ الإبلاغ  
(للحالات المثبتة والمثبتة)



استعمال الاسرة الاستشفائية  
(للحالات المثبتة والمثبتة)



حسب الفئة العمرية  
(للحالات المشبهة والمثبتة)



حسب البلدة  
(للحالات المثبتة)



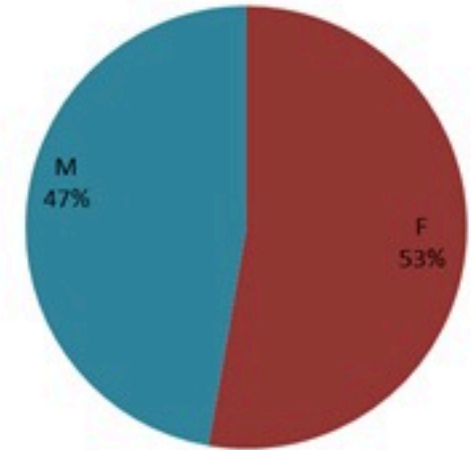
# Cholera Surveillance Report

## 5 Dec 2022

**Call Centers**  
 1760 (Red Cross)  
 1787 (MOPH)

All cases (suspected and confirmed)		Confirmed Cases		Deaths (suspected and confirmed)	
New (past 24 h)	Cumulative	New (past 24 h)	Cumulative	New	Cumulative
<b>52</b>	<b>4827</b>	<b>0</b>	<b>652</b>	<b>2</b>	<b>22</b>

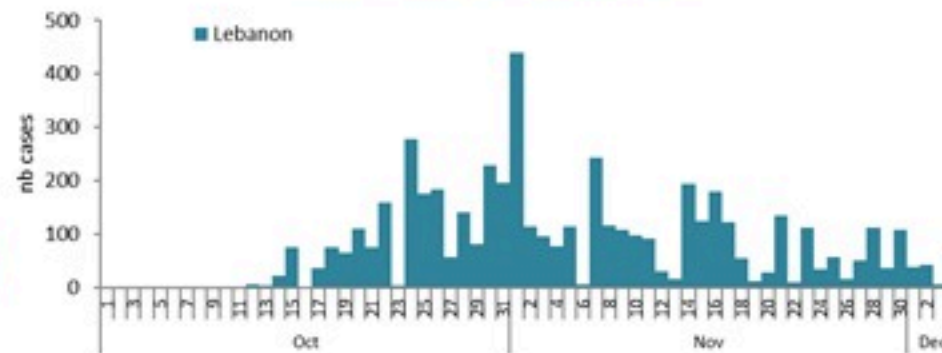
By sex  
(suspected and confirmed)



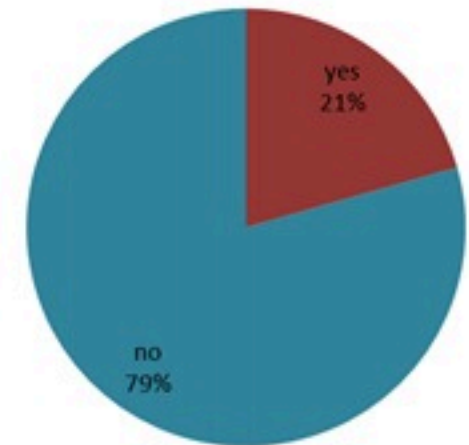
Occupied hospital beds  
(suspected and confirmed)



By date of report  
(suspected and confirmed)



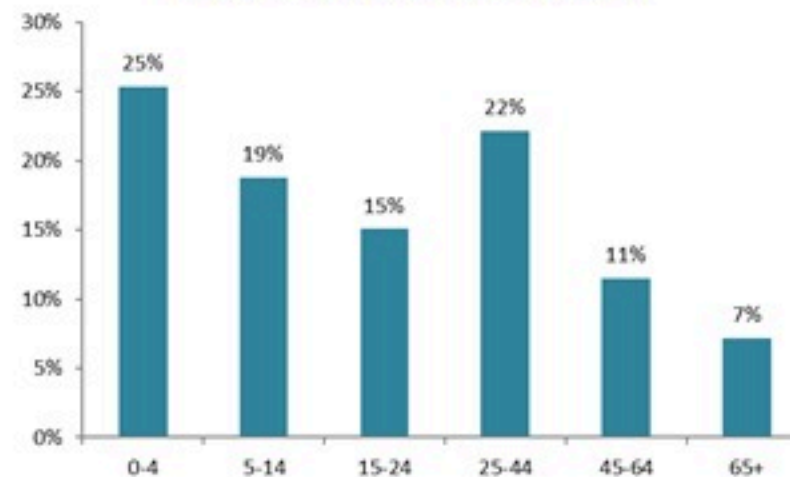
By Hospital Admission  
(suspected and confirmed)



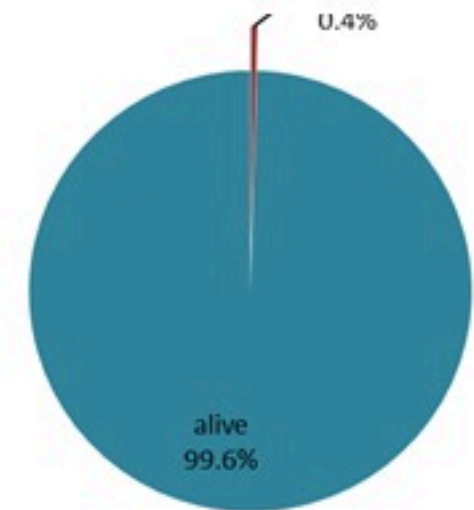
By locality (confirmed cases)



By age group  
(suspected and confirmed cases)



By Outcome  
(suspected and confirmed)

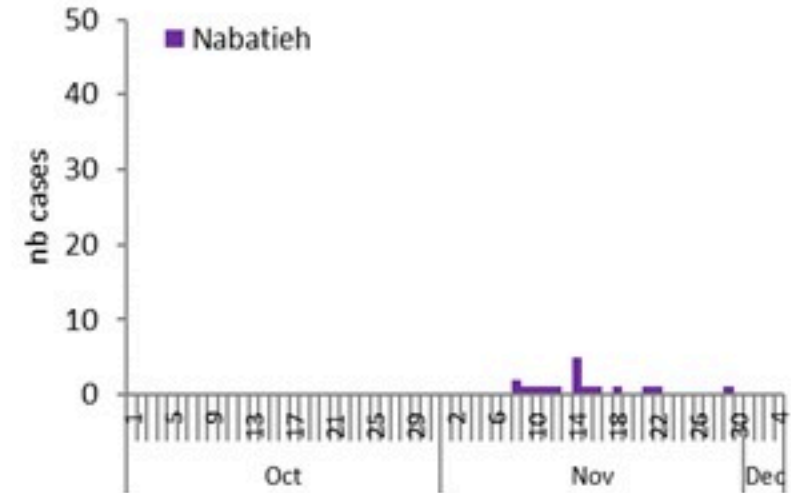
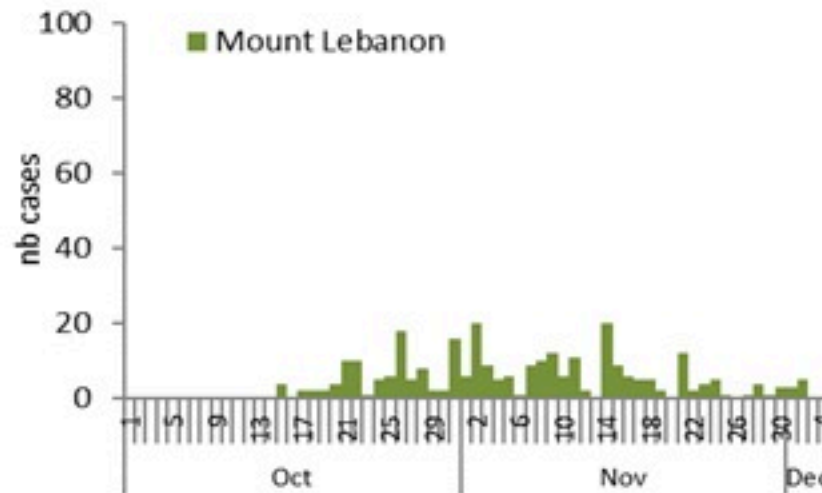
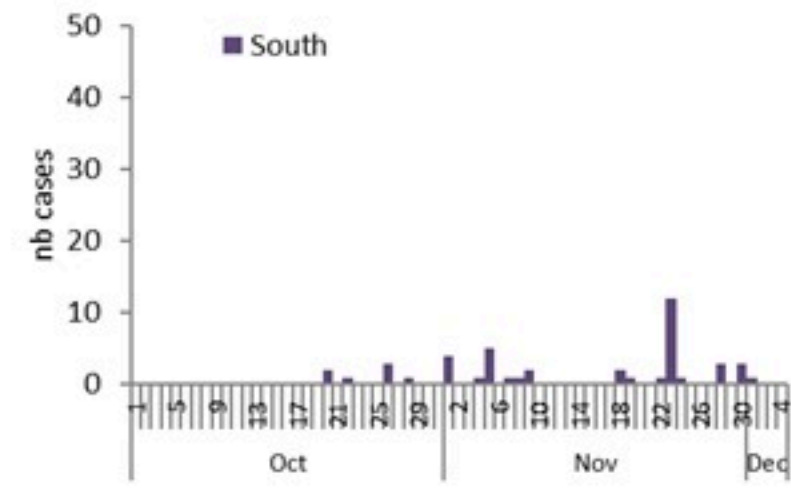
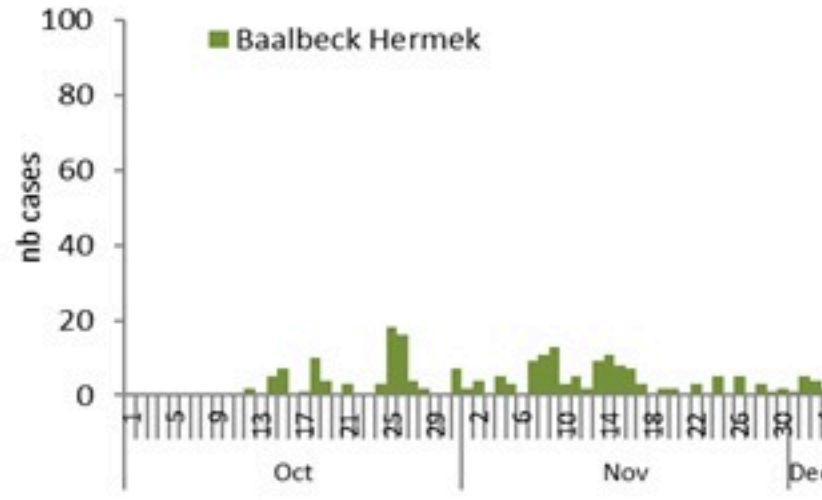
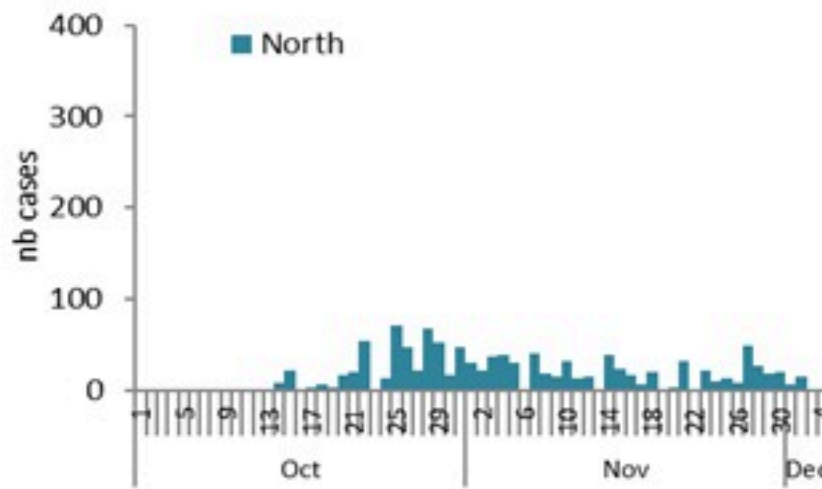
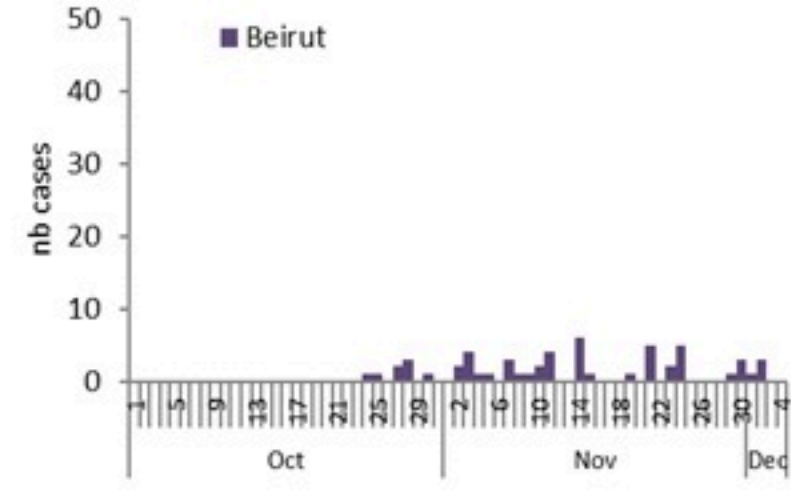
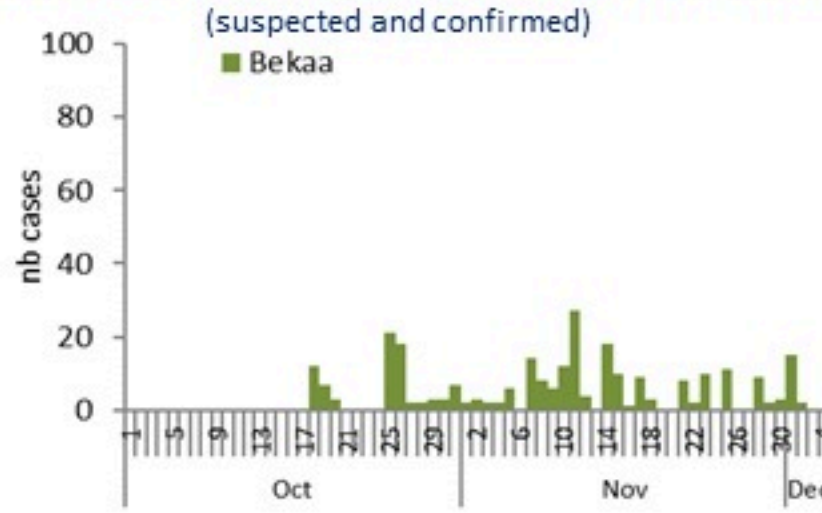
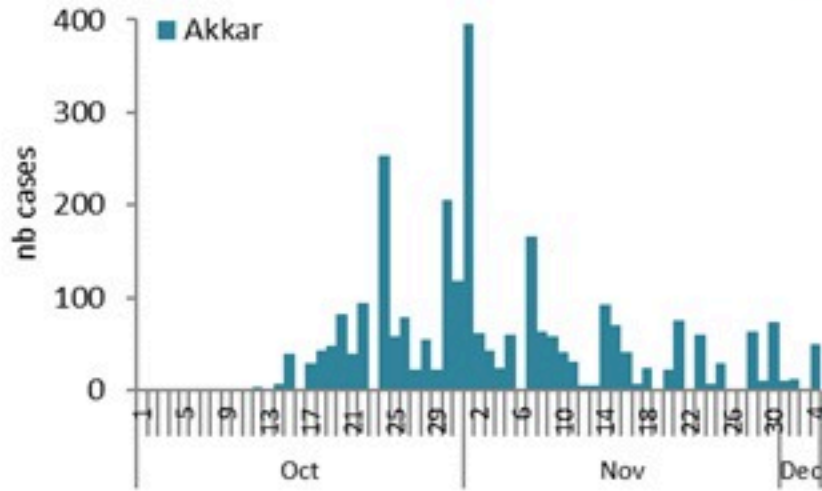




# Cholera Surveillance Report

## 5 Dec 2022

Epicurves by date of reporting by province (suspected and confirmed)



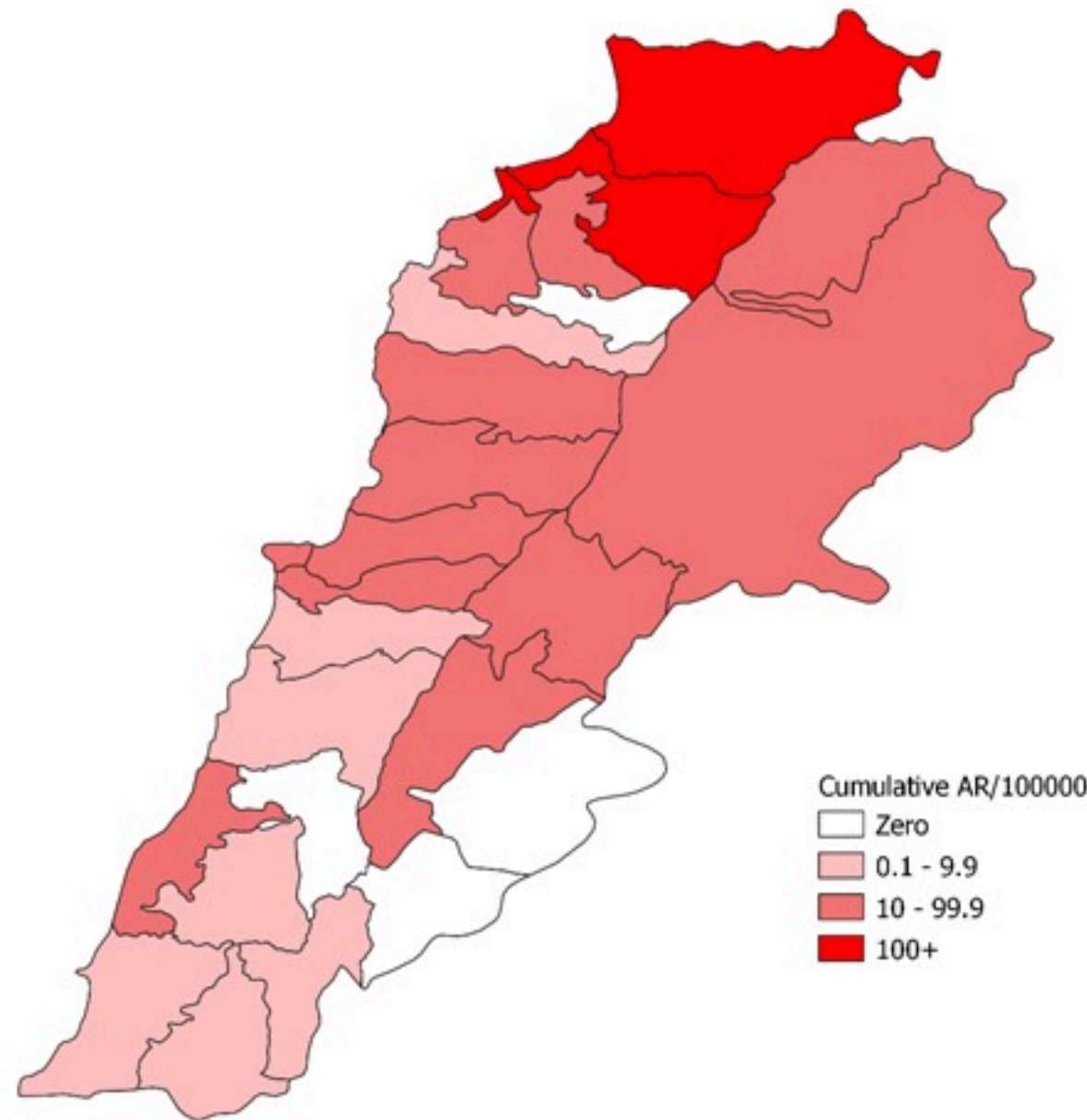
# Cholera Surveillance Update

5 Dec 2022

4

Cumulative Attack Rate per 100,000 (suspected and confirmed)

نسبة الحدوث التراكمية لكل مئة ألف نسمة (الحالات المشتبهية والمثبتة)



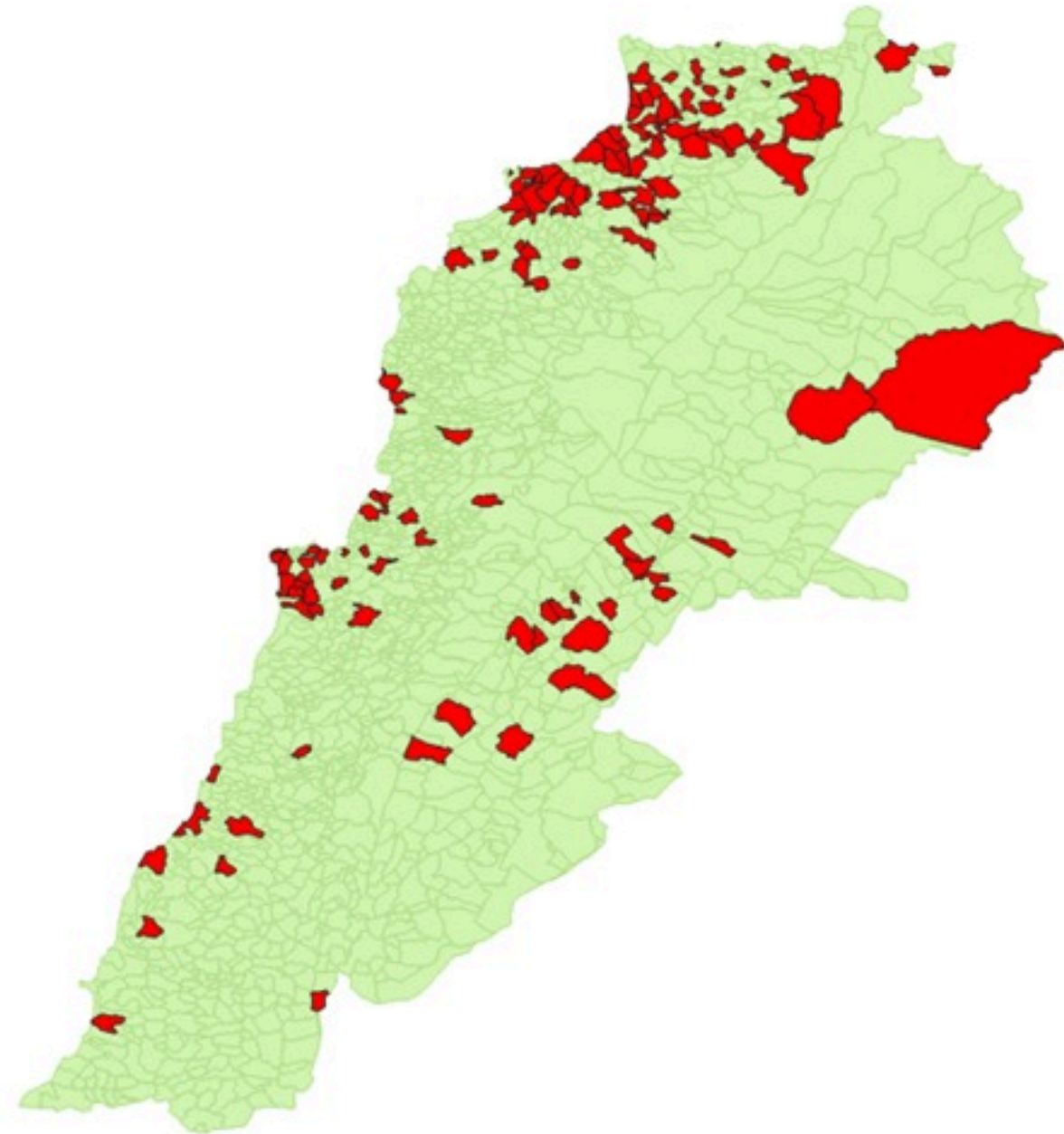


# Cholera Surveillance Update

## 5 Dec 2022

Caza	Locality	cases	Caza	Locality	cases
Akkar	Akkar Atika	1	Kesrwan	Aintoura	1
	Amayer/Duadi Khaled	1		Bailounch	1
	Arqa / Marlayet Haddara	2		Bqatouta	7
	Bebnine / Baddoua	158		Ghazir	2
	Beit Hajj/Koucha/Khreibit Jindi	3		Jounieh Ghadir	4
	Berqayel	6		Jounieh Sarba	4
	Bezbina	1		Yahchouch	1
	Birch	2		Zouk Mosbeh	3
	Bqerzla	1	Koura	Aaba	1
	Cheikh Ayache / Chir Hmairine	3		Aafsdiq	1
	Dahr Qambar /Hokr Qattch	2		Barsa	1
	Dinbou	1		Bsarma	1
	Fneydek	1		Dahr Ain / Ras Masqua	1
	Halba	1		Rechdibbine	1
	Hayssa	1		Kfar Aqa	1
	Hoculch	3	Marjeoun	Aadayssch	1
	Jdeldat Qaytee	3	Metn	Biktaya	1
	Kfar Harra	4		Broummana	1
	Kfar Melki	1		Bsalim	1
	Khane Hayat	1		Daoura/Borj Hammoud	2
	Khirbet Char	2		Mansourich	3
	Kneisset Hnaldar	1		Zalqa	1
	Kouachra	1	Minieh Danieh	Aadous	1
	Kouekhat	2		Assoun	4
	Machha	2		Ain El Tineh	1
	Majdala	2		Bahsa	1
	Memneaa	1		Bakhaaoun	4
	Mhamarah / Nahr Bared / Abdeh	22		Bhanine / Zouk Bhanine	7
	Miniara	3		Btermaz	6
	Mqyatea	1		Douralya	1
	Ouadi Jamous	11		Kfar Chellane	2
	Qaabrine / Tal Hayat	7		Kfar Habou	1
	Qbalyat	1		Merkebta	2
	Qlayat Akkar	2		Minieh	18
	Qobet Chamra	17		Ouatlyeh	1
	Rahbeh	1		Qattline	3
	Ransiyeh / Deir Dalloum	1		Rihanich	35
	Saadine	4		Sir Dannieh	5
	Tell Abbas Charqui	2	Salda	Aanqoun	1
	Tleil	1		Ghazieh	2
	Zouq Haddara	1		Kharayeb	3
	Zouq Hosnieh	3		Salda	1
Aley	Aley	1		Sarafand	1
	Hay Selloum/Chouefat	1	Sour	Deir Qanoun Ain	4
Baabda	Ain Roummaneh	1		Baddawi	16
	Borj Brajneh	3		Mina	7
	Ghbayreh/Chiyah/Sabra	2		Qobbah	21
	Hadath	3	Tripoli	Tripoli Bab Raml	1
	Haret Hireik	1		Tripoli Gardens	1
	Kfar Chima	1		Tripoli Haddadine	1
	Mrejjih	1		Tripoli Nouri	1
Baalbeck	Arsal	27		Tripoli Souayqa / Jisrain	3
	Kfar Dabache	2		Tripoli Tabbaneh	20
	Khodr	2		Tripoli Zeitoun	15
	Temnine Faouqa	1	West Beqaa	Kamel laouz	1
	Temnine Tahta	9		Kefraya	1
	Younine	1		Saghbine	1
Batroun	Chikka	1	Zahieh	Aali Nahri	2
Beirut	Achrafieh	2		Bar Elias	2
	Ain Mraissseh	1		Dalhamieh	1
	Hamra	1		Haouch Mandra	1
	Mdaouar / Mar Mikhael	1		Hawch Omara	7
	Msaltbeh	1		Majdal Anjar	1
Chouf	Zaarouriyeh	1		Qob Elias	9
Jbeil	Amchit	1		Raait	11
	Ehmej	1		Saadnayel	11
	Jbeil	1		Taalabaya	2
	Mastita	2		Zahieh Maalaka	2
			Zghorta	Aalima	1
				Ardeh	1
				Kfar Dlaqous	2
				Mejdalya Zghorta	6
				Miriata / Faour	3
				Sebaal	1
				Zghorta	4

By locality (confirmed)  
حسب البلدة (المتبنة)



Figures in table are subject to modification following updates and data correction