

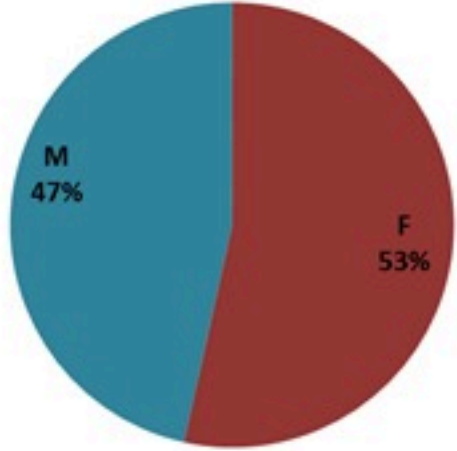
ترصد الكوليرا في لبنان 9 أيار 2023

الجمهورية اللبنانية
وزارة الصحة العامة
برنامج الترصد الوبائي



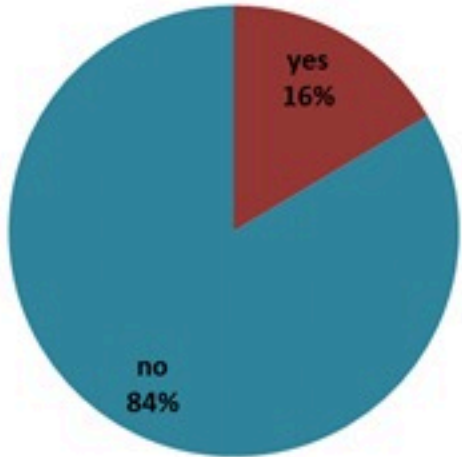
الخطوط الساخنة

1760 (الصليب الأحمر)
1787 (وزارة الصحة)



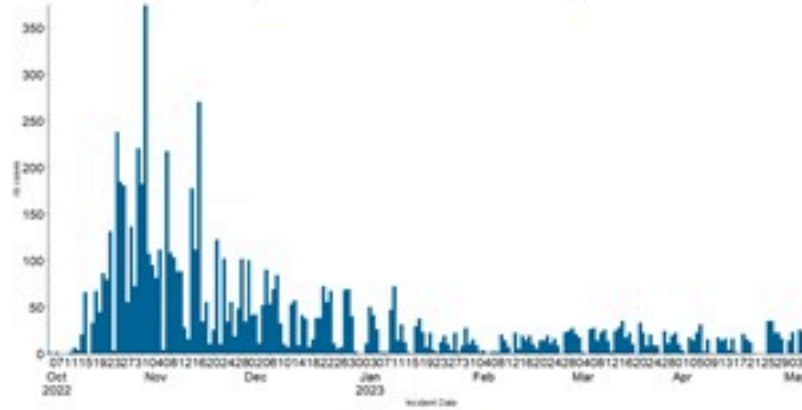
حسب الجنس
(المشبهة والمتبنة)

الوفيات (المتبنة)		الحالات المتبنة		كافة الحالات المشبهة والمتبنة	
التراكمي	الجديدة (آخر 24 ساعة)	التراكمي	الجديدة (آخر 24 ساعة)	التراكمي	الجديدة (آخر 24 ساعة)
23	0	671	0	7669	10

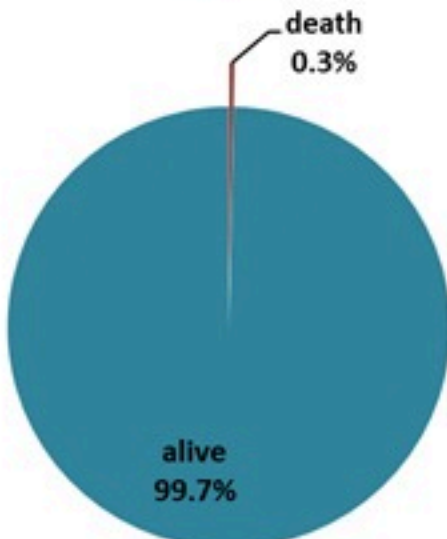
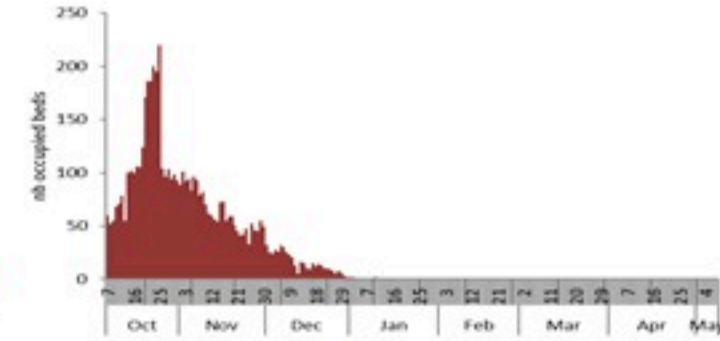


حسب الاستشفاء
(المشبهة والمتبنة)

حسب تاريخ الإبلاغ
(للحالات المتبنة والمتبنة)

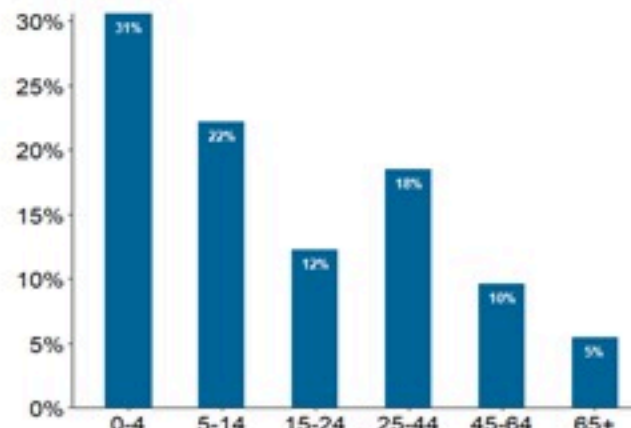


استعمال الاسرة الاستشفائية
(للحالات المتبنة والمتبنة)



حسب تطور
الحالة
(المشبهة والمتبنة)

حسب الفئة العمرية
(للحالات المشبهة والمتبنة)



حسب البلدة
(للحالات المتبنة)



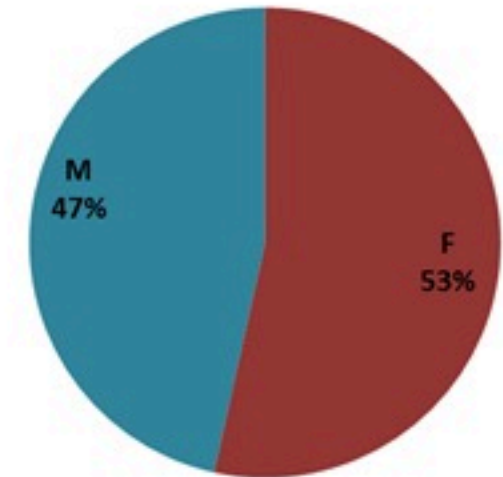
Cholera Surveillance Report

9 May 2023

Call Centers
 1760 (Red Cross)
 1787 (MOPH)

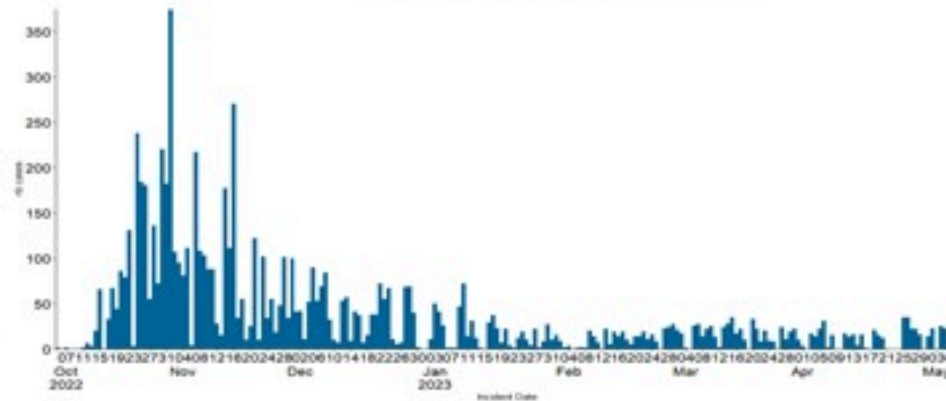
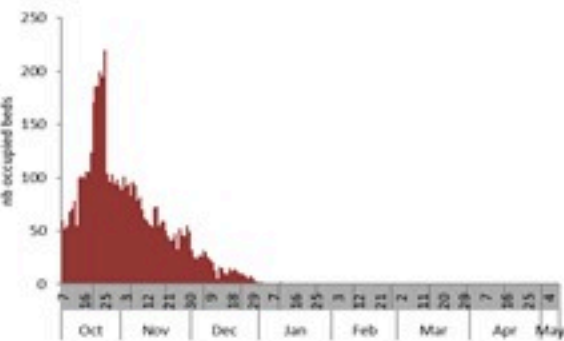
All cases (suspected and confirmed)		Confirmed Cases		Deaths (confirmed)	
New (past 24 h)	Cumulative	New (past 24 h)	Cumulative	New	Cumulative
10	7669	0	671	0	23

By Sex
(suspected and confirmed)

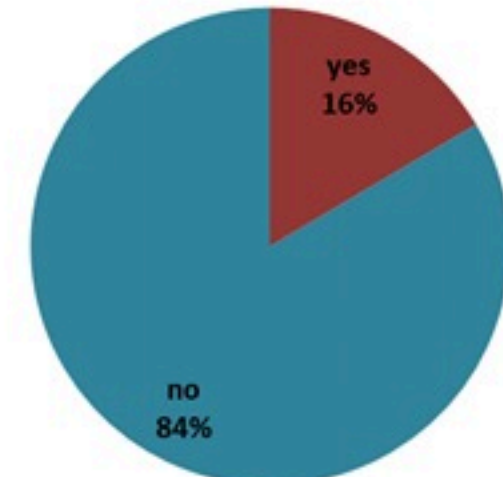


Occupied hospital beds
(suspected and confirmed)

By date of report
(suspected and confirmed)

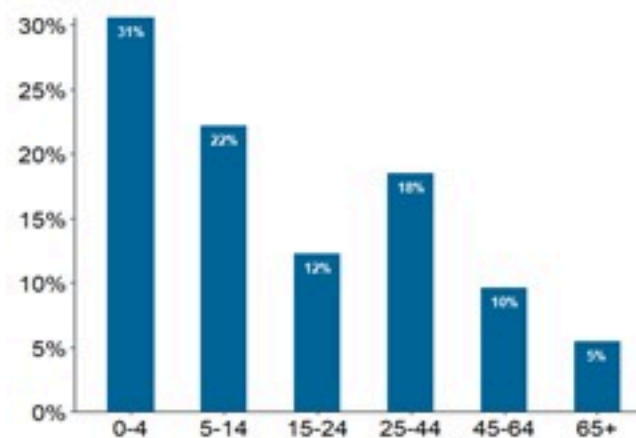


By Hospital Admission
(suspected and confirmed)

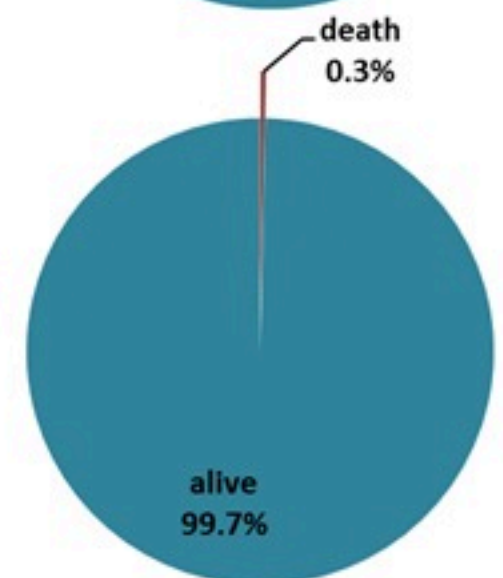


By locality (confirmed cases)

By age group
(suspected and confirmed cases)



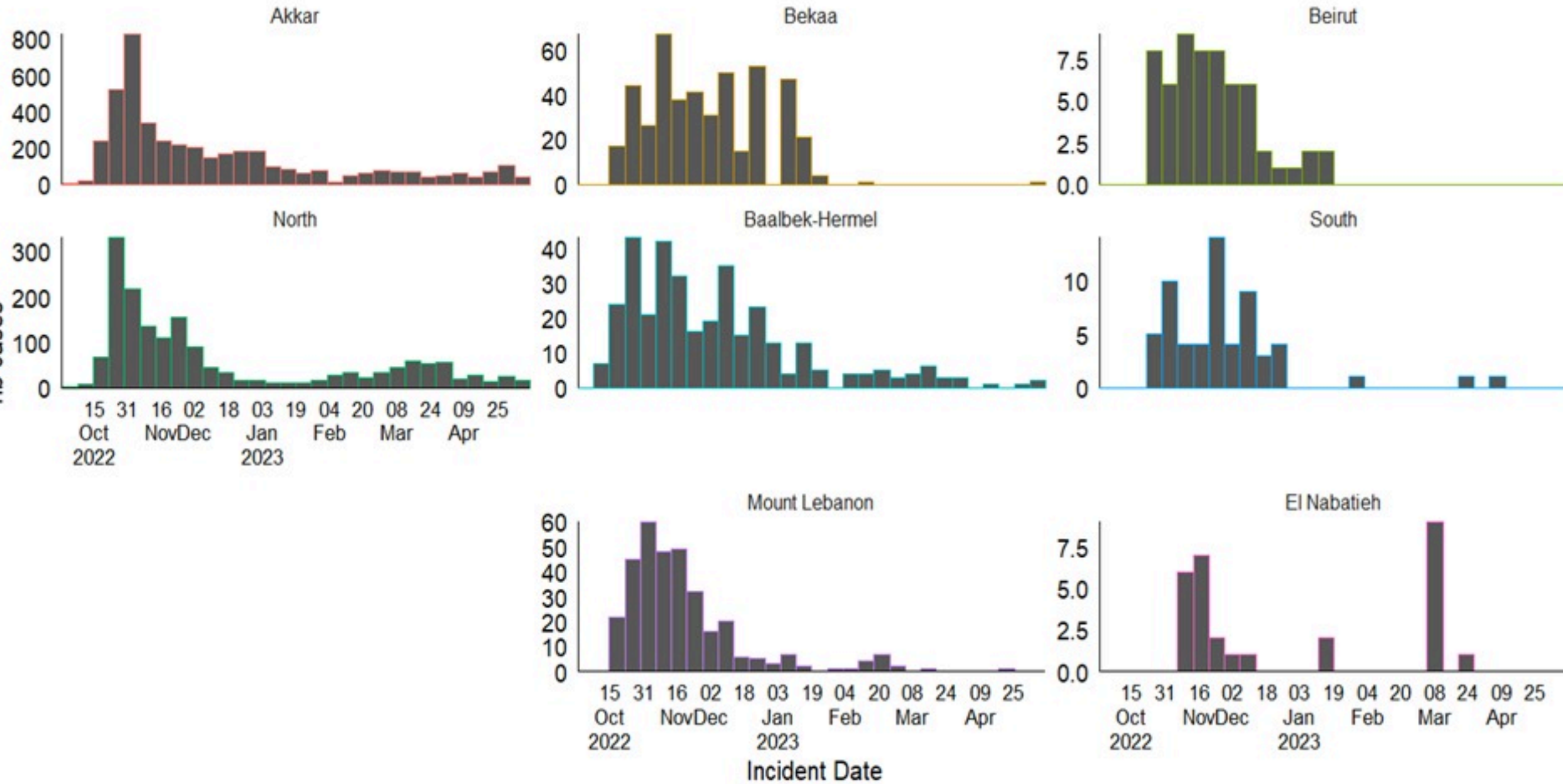
By Outcome
(suspected and confirmed)



Cholera Surveillance Report

9 May 2023

Epicurves by date of reporting by province
(suspected and confirmed)

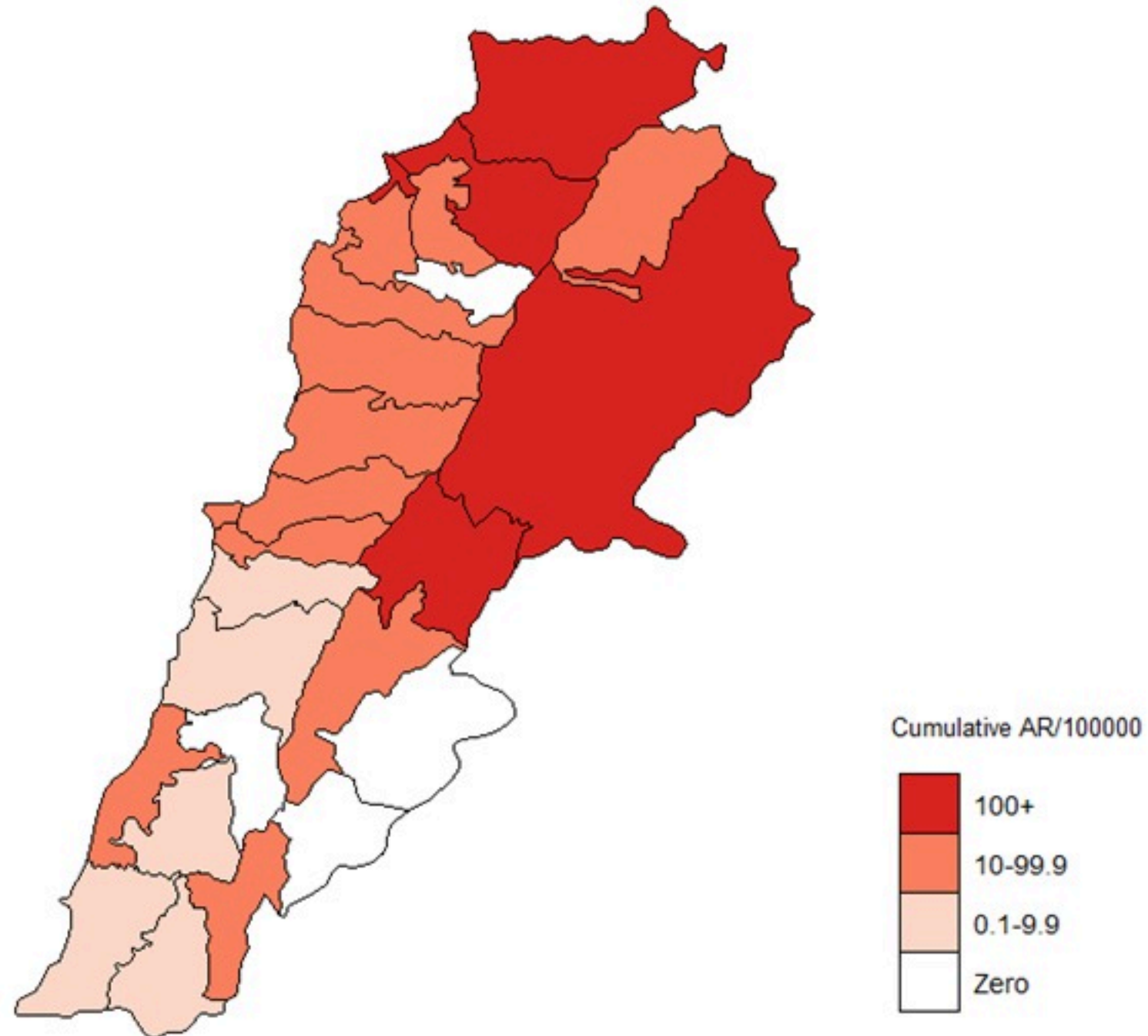


Cholera Surveillance Update

9 May 2023

Cumulative Attack Rate per 100,000 (suspected and confirmed)

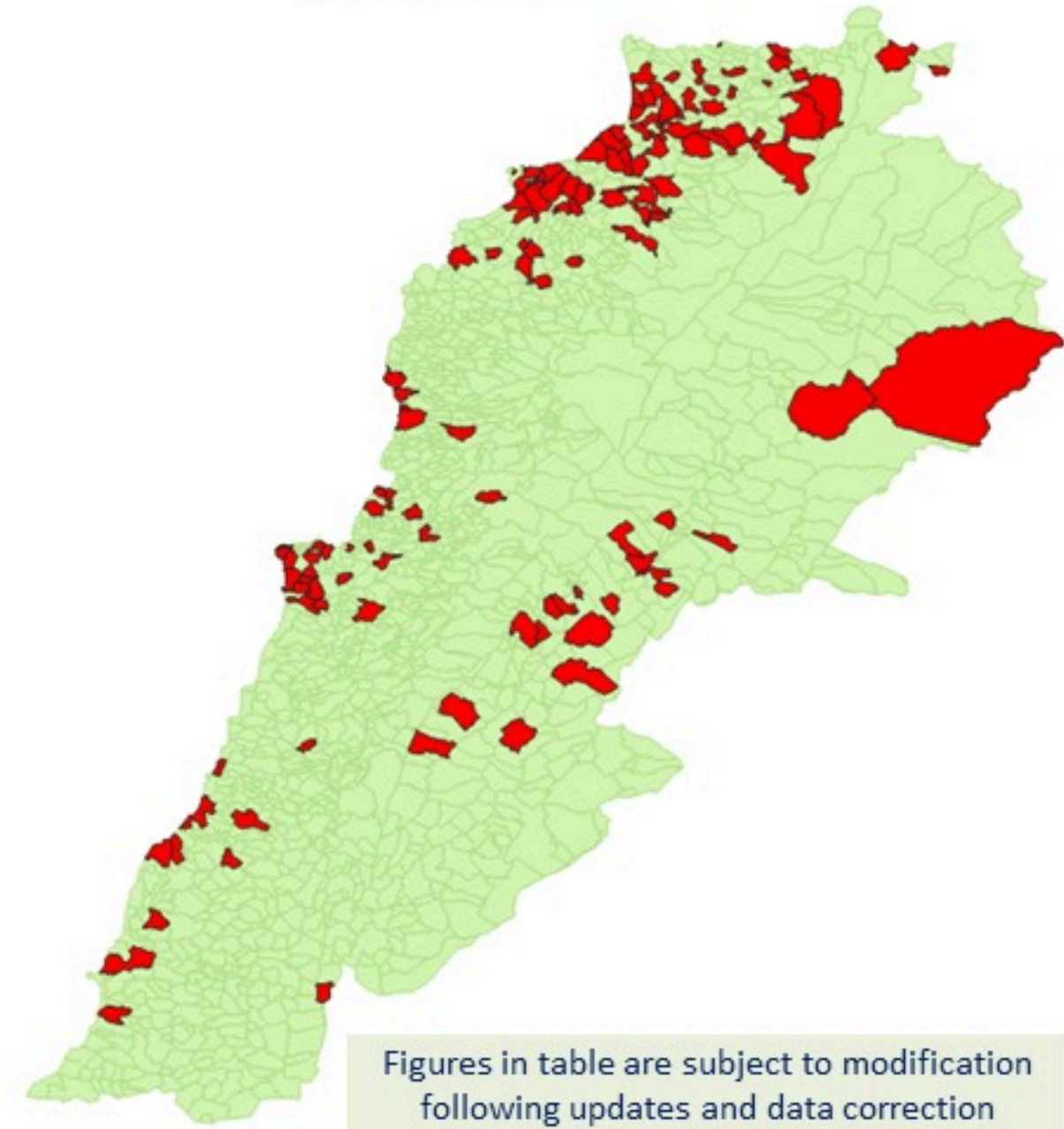
نسبة الحدوث التراكمية لكل مئة الف نسمة (الحالات المشتبهه والمثبتة)



Cholera Surveillance Update

9 May 2023

By locality (confirmed)
حسب البلدة (المتبقة)



Figures in table are subject to modification following updates and data correction

Locality	cases	Locality	cases
Akkar Atika	1	Aintouna	1
Amayer/Duadi Khaled	1	Balfounh	1
Arqa / Marlayet Haddara	2	Bqajouta	7
Bebnine / Baddoua	16	Ghazir	2
Beit Hajj/Koucha/Khrebit Jindi	1	Jounieh Ghadir	4
Bergayel	1	Jounieh Sabra	4
Bezblna	1	Yahchouch	1
Bireh	1	Zouk Mosbeh	3
Bqerzla	1	Aaba	1
Cheikh Ayache / Chir Hmairine	1	Aafdiq	1
Dahr Qambar /Hokr Gatteh	1	Bana	1
Dabadeb	1	Bsama	1
Dinbou	1	Dahr Ain / Ras Masqou	1
Fneydek	1	Rachdibbine	1
Halba	1	Kfar Aqa	1
Hayssa	1	Aadlyssah	1
Hoeuich	1	Biklaya	1
Jdeidat Qaytee	1	Broummana	1
Kfar Harra	4	Bsalim	1
Kfar Melki	1	Daruna/Borj Hammoud	2
Khane Hayat	1	Mansourieh	3
Khirbet Char	1	Zalqa	1
Kneisset Hnaldar	1	Aadoua	1
Kouachra	1	Assoun	4
Koukikhat	1	Ain El Tineh	1
Machha	1	Bahsa	1
Majdala	1	Bakhawoun	4
Memneaa	1	Bhanine / Zouk Bhanine	7
Mhamarah / Nahr Bared / Abdeh	22	Btarmat	6
Minlara	1	Douniyya	1
Mqyatea	1	Kfar Chollane	2
Ouadi Jamous	11	Kfar Habrou	1
Qaabrine / Tal Hayat	1	Mokubta	2
Qbalyat	1	Miniyah	18
Qlayat Akkar	1	Qualiyeh	1
Qobet Chamra	17	Qattine	3
Rahbeh	1	Rihanieh	35
Ransiyeh / Deir Dalloum	1	Sir Daniyah	5
Saadine	1	Aanqoun	1
Tell Abbas Charqui	1	Bissatiyeh	4
Tleil	1	Ghazieh	2
Zouq Haddara	1	Khawayeb	3
Zouq Hosnieh	1	Saida	1
Aley	1	Sawland	1
Hay Selloum/Chouifat	1	Abbasiyeh	1
Ain Roummaneh	1	Deir Qanoun Ain	4
Borj Brajneh	1	Badawi	16
Ghbayreh/Chiyah/Sabra	1	Mina	7
Hadath	1	Qobbah	21
Haret Hreik	1	Tripoli Bab Raml	1
Kfar Chima	1	Tripoli Gardens	2
Mrejijh	1	Tripoli Haddadine	1
Arsal	27	Tripoli Nouri	1
Kfar Dabache	1	Tripoli Souayya / Issaiah	3
Khodr	1	Tripoli Tabbaneh	21
Temnine Faouqa	1	Tripoli Zaitoun	15
Temnine Tahta	1	Kamel Jaouz	1
Younine	1	Kulaya	1
Chikka	1	Saghbine	1
Achrafieh	1	Aali Nahri	2
Ain Miralssah	1	Bar Elias	2
Hamra	1	Dalhameh	2
Mdsour / Mar Mikhael	1	Hazuch Mandia	1
Msalbeh	1	Hawch Omara	7
Zaarouriyeh	1	Majdal Anjar	1
Amchit	1	Qob Elias	9
Ehmej	1	Raait	11
Fidar	1	Saadnayel	11
Halate	1	Tadlabaya	2
Jbeil	1	Zahlh Madaka	2
Mastita	1	Aalma	1
		Ardah	1
		Kfar Dhaqous	2
		Majdalya Zghorta	7
		Miriata / Faour	3
		Sabael	1
		Zghorta	5

Cholera weekly incidence rate/100,000



Incidence per 100000

