

2024
17 April



Acute Flaccid Paralysis & Poliovirus Surveillance Indicators
 Republic of Lebanon—Ministry of Public Health

Worldwide (www.polioeradication.org)

Globally, last week — Wild Poliovirus WPV1 was detected in Pakistan (12 ES), and Afghanistan (1 AFP and 5 ES).

Last week positive findings, circulating Vaccine Derived Poliovirus cVDPV1 was detected in Madagascar (5 ES). cVDPV2 was detected in Liberia (1 ES).

Table (1): Worldwide Polio positive samples

Virus	Sources	Cumulative 2023	Cumulative 2024	Last week	Notes
WPV1	AFP	12	4	1	Pakistan, Afghanistan
	ES/Other	187	110	17	
cVDPV1	AFP	133	0	0	Madagascar
	Other	7	0	0	
cVDPV2	AFP	373	12	0	Last week: Liberia
	ES	305	41	1	
	Other	132	4	0	

AFP Acute Flaccid Paralysis case, ES Environmental Surveillance

Lebanon — Summary indicators

Lebanon — During the past 2 weeks, 2 new cases were reported from the Mount-Lebanon (1) and North (1), aged 5-9 y(2), and vaccinated. As cumulative, 25 AFP cases were reported from 8 provinces.

Table 2: National indicators for AFP surveillance, 2024

Indicator	Value	Target
AFP last week (nb)	6	1+
Total AFP (nb)	25	
Annualized NP AFP rate (/100000)	5.18	2+
Specimen adequacy (%)	88.0%	80+
Notification within 7 d (%)	92.0%	80+
Investigation within 48h (%)	100.0%	80+
Zero dose AFP (6m-59m) (nb)	0	
NPEV among specimens (%)	-	10+
Sabin virus (nb)	0	-
Vaccine Derived Poliovirus (nb)	0	0
Wild Poliovirus (nb)	0	0
Final classification (nb)	0	-

Table 3: AFP/Polio surveillance indicators by province

Province	AFP cases, 2024					Zero reporting		Environmental surveillance, 2023			
	AFP (n)	NP AFP rate (/100000)	Adequacy (%)	Notified in 7 d (%)	Zero dose	Nb received reports	% Completeness	Sep	Oct	Nov	Dec
North	6	9.1	67%	100%	0	318	95%	NPEV/SL3	SL1/3	NPEV/SL3	NPEV/SL3
Akkar	1	2.2	100%	100%	0	236	99%				
Bekaa	2	3.7	100%	50%	0	137	98%				
Baalbeck Hermel	3	8.1	67%	100%	0	252	100%	NPEV/SL1/3	SL1/3	SL3	SL3
South	1	1.6	100%	100%	0	627	97%				
Nabatieh	2	5.7	100%	50%	0	224	94%	NPEV/SL3	SL3	NPEV/SL3	NPEV/SL3
Beirut	4	18.2	100%	100%	0	68	97%				
Mount Lebanon	6	3.7	100%	100%	0	164	98%	NPEV/SL3	SL1/3	NPEV/SL1/3	SL3

Table 4: Indicators by district, 2024

District	AFP	Rate/100,000	Adequacy
Caza			
Akkar	1	3.08	100%
Aleyh	2	9.46	100%
Baabda	1	2.54	100%
Baalbeck	2	11.50	50%
Batroun	0		
Becharreh	0		
Beirut	4	19.67	100%
West Bekaa	1	11.61	100%
Bint Jbeil	0		
Chouf	0		
Hasbaya	0		
Hermel	1	37.46	100%
Jbeil	1	11.69	100%
Jezzine	0		
Kesrwan	0		
Koura	1	15.15	0%
Marjeoun	0		
Minieh Danieh	2	18.31	100%
Metn	2	5.88	100%
Nabatieh c	2	13.60	100%
Rashaya	0		
Saida	1	3.70	100%
Sour	0		
Tripoli	2	10.46	50%
Zahleh	1	5.22	100%
Zghorta	1	14.57	100%

Fig 1: AFP cases by week, 2024

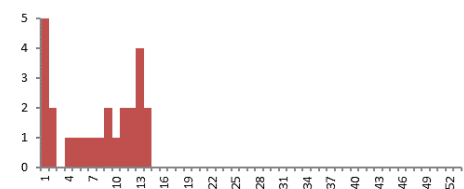


Table 3: Indicators by nationality, 2024

Population	AFP (n)	Annualized rate /100000	Specimen adequacy (%)	Notified within 7 d (%)
Resident	22	6.80	86%	95%
Palestinian	0	0.00	-	-
Syrian	3	2.29	100%	67%