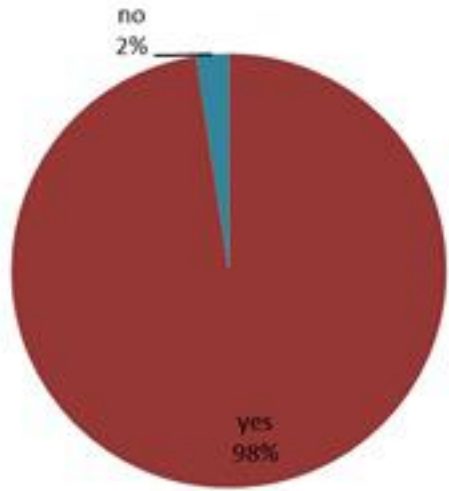


الخطوط الساخنة

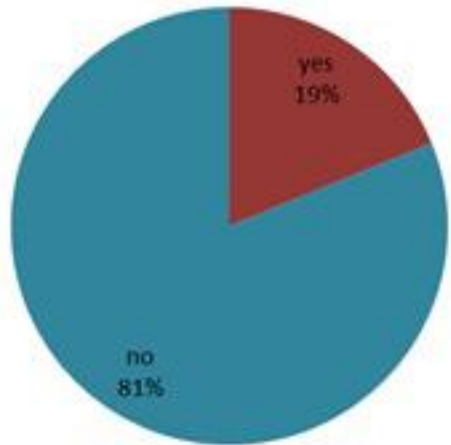
1760 (الصليب الأحمر)
1787 (وزارة الصحة)

ترصد الكوليرا في لبنان 10 تشرين الثاني 2022

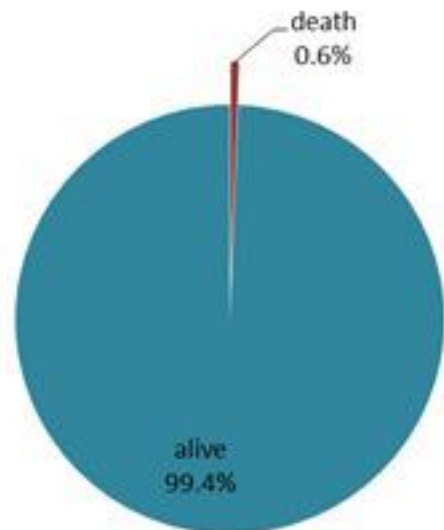
الجمهورية اللبنانية
وزارة الصحة العامة
برنامج الترصد الوبائي



حسب ظهور العوارض (المشبهة والمثبتة)



حسب الاستشفاء (المشبهة والمثبتة)



حسب تطور الحالة (المشبهة والمثبتة)

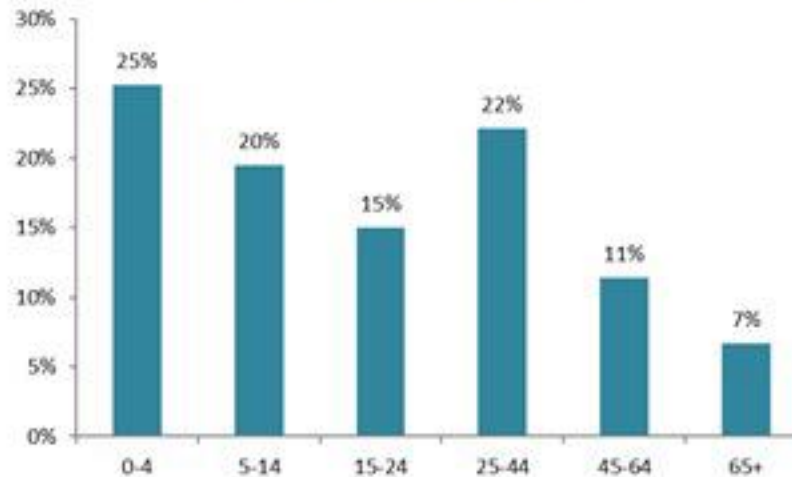
الوفيات (المثبتة)		الحالات المثبتة		كافة الحالات المشبهة والمثبتة	
التراكمي	الجديدة (آخر 24 ساعة)	التراكمي	الجديدة (آخر 24 ساعة)	التراكمي	الجديدة (آخر 24 ساعة)
18	0	511	21	3160	118

حسب تاريخ الإبلاغ (للحالات المثبتة والمثبتة)



عدد الاسرة المستعملة (للحالات المشبهة والمثبتة)
70

حسب الفئة العمرية (للحالات المشبهة والمثبتة)



حسب البلدة (للحالات المثبتة)



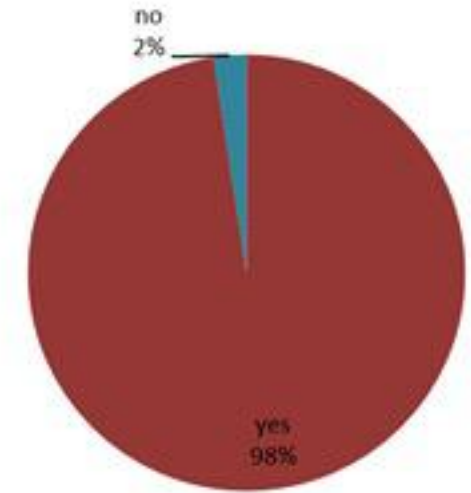
Cholera Surveillance Report

10 Nov 2022

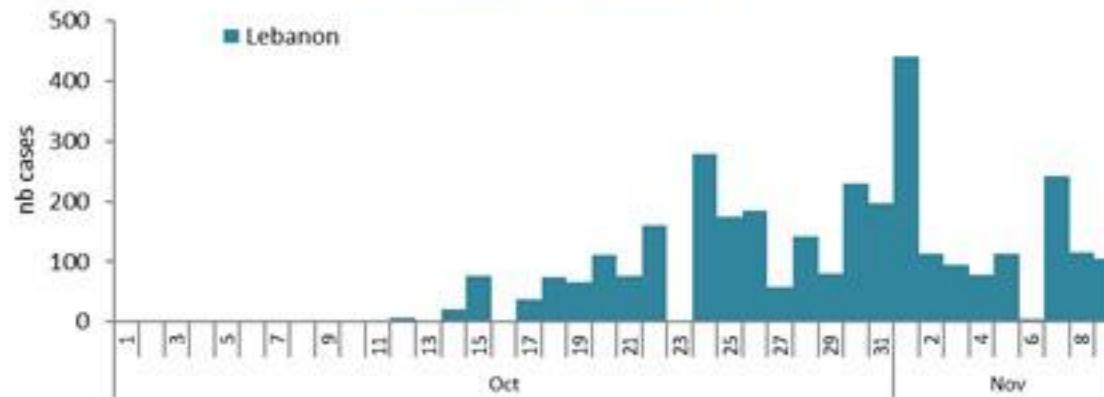
Call Centers
 1760 (Red Cross)
 1787 (MOPH)

All cases (suspected and confirmed)		Confirmed Cases		Deaths (confirmed)	
New (past 24 h)	Cumulative	New (past 24 h)	Cumulative	New	Cumulative
118	3160	21	511	0	18

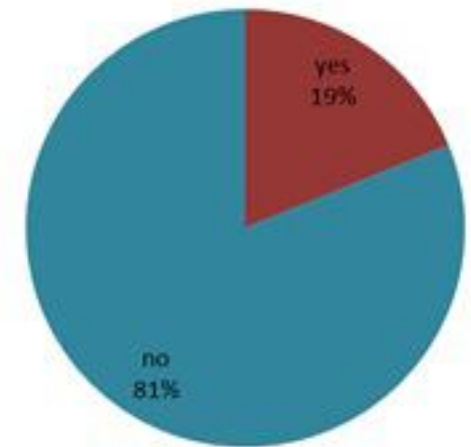
By Presence of Illness
(suspected and confirmed)



By date of report
(suspected and confirmed)



By Hospital Admission
(suspected and confirmed)

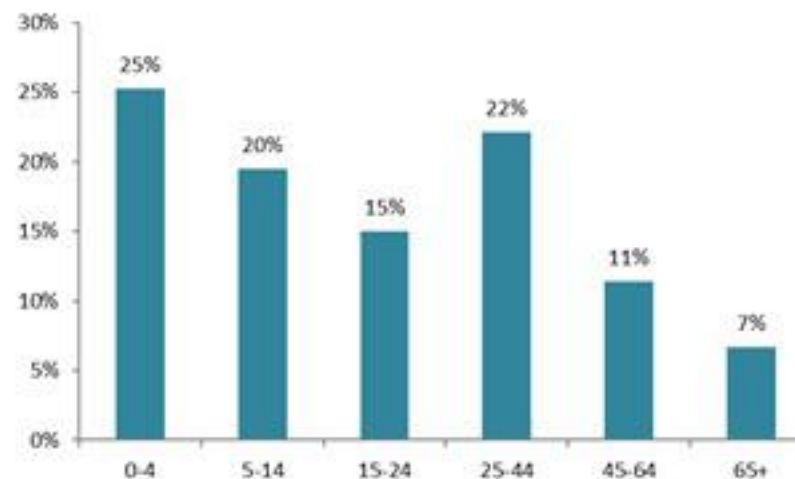


**Total occupied beds
(suspected/confirmed)**
70

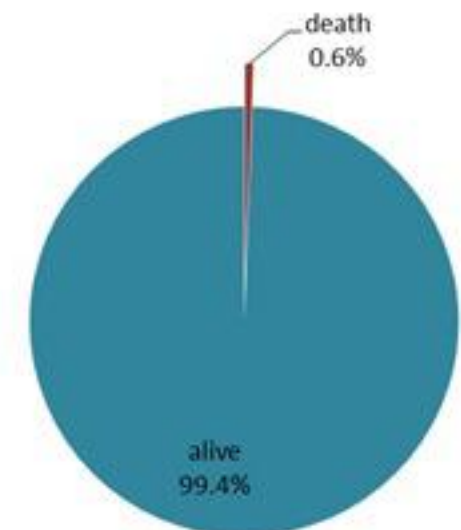
By locality (confirmed cases)



By age group
(suspected and confirmed cases)



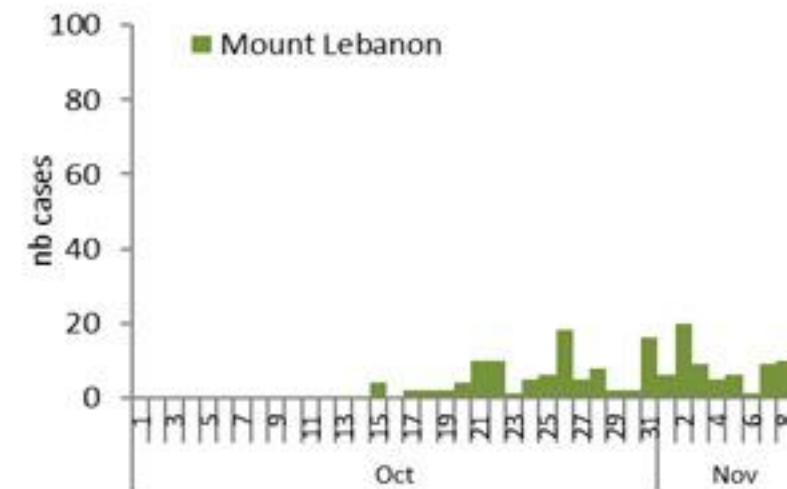
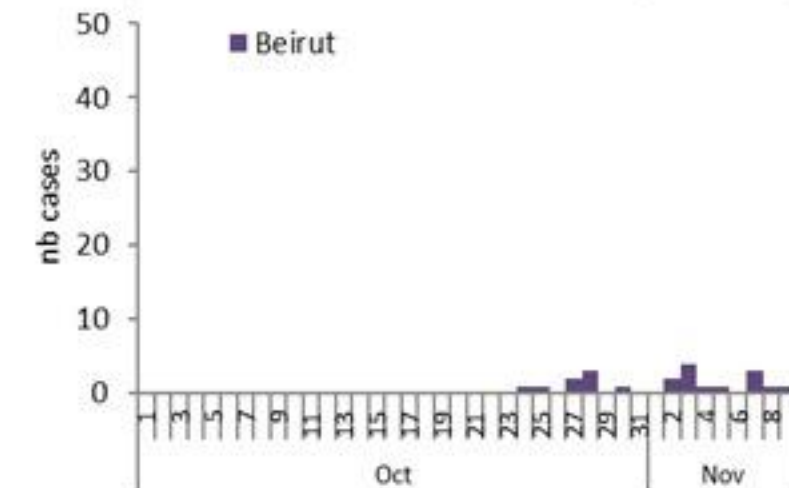
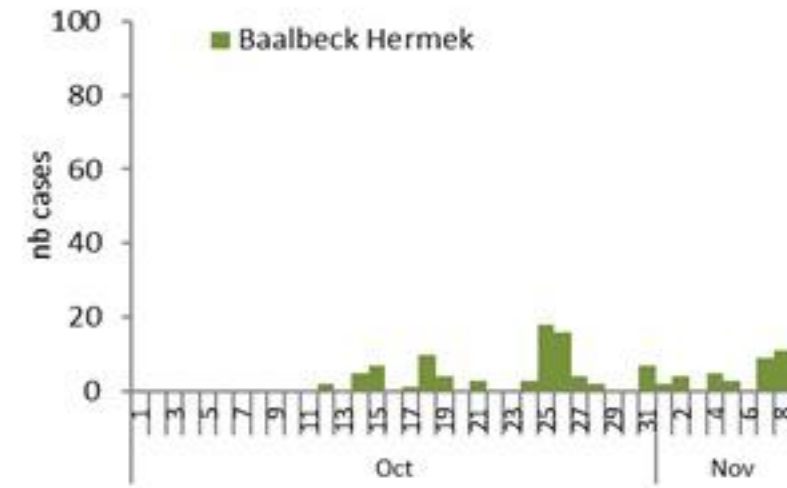
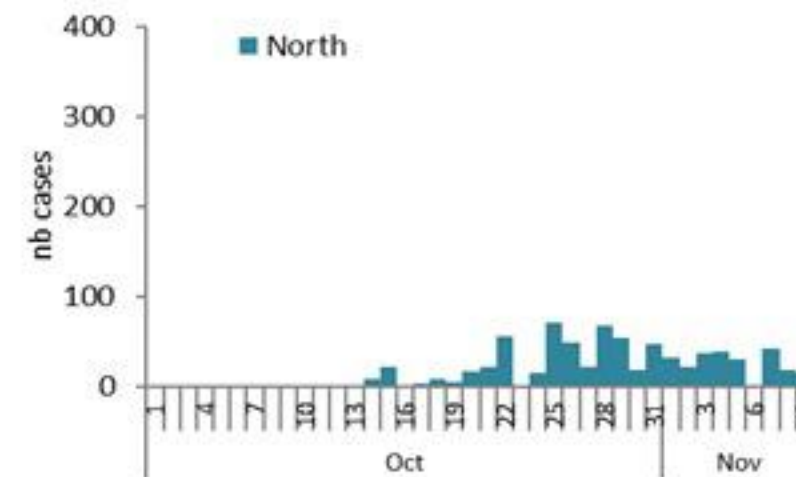
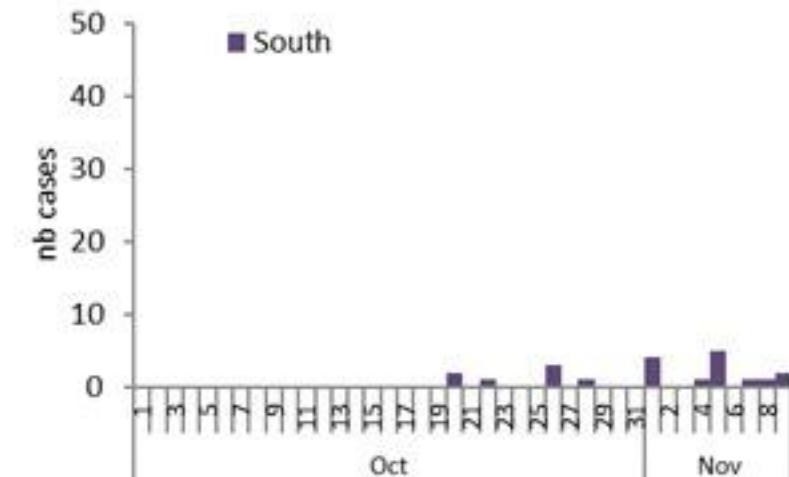
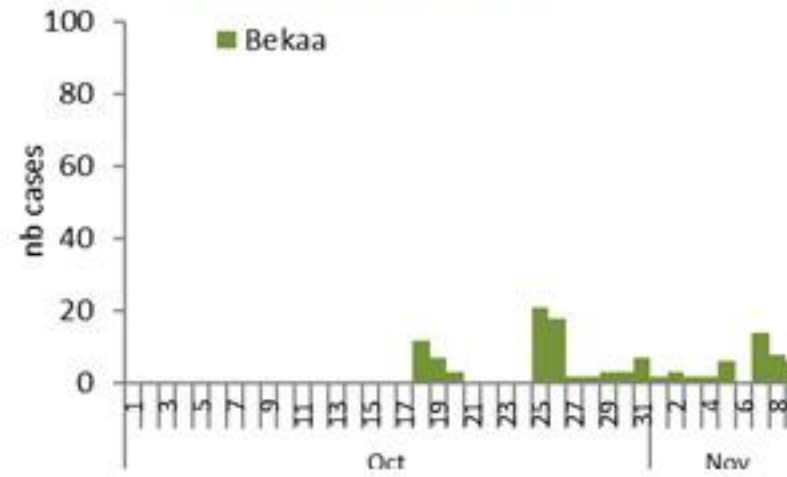
By Outcome
(suspected and confirmed)



Cholera Surveillance Report

10 Nov 2022

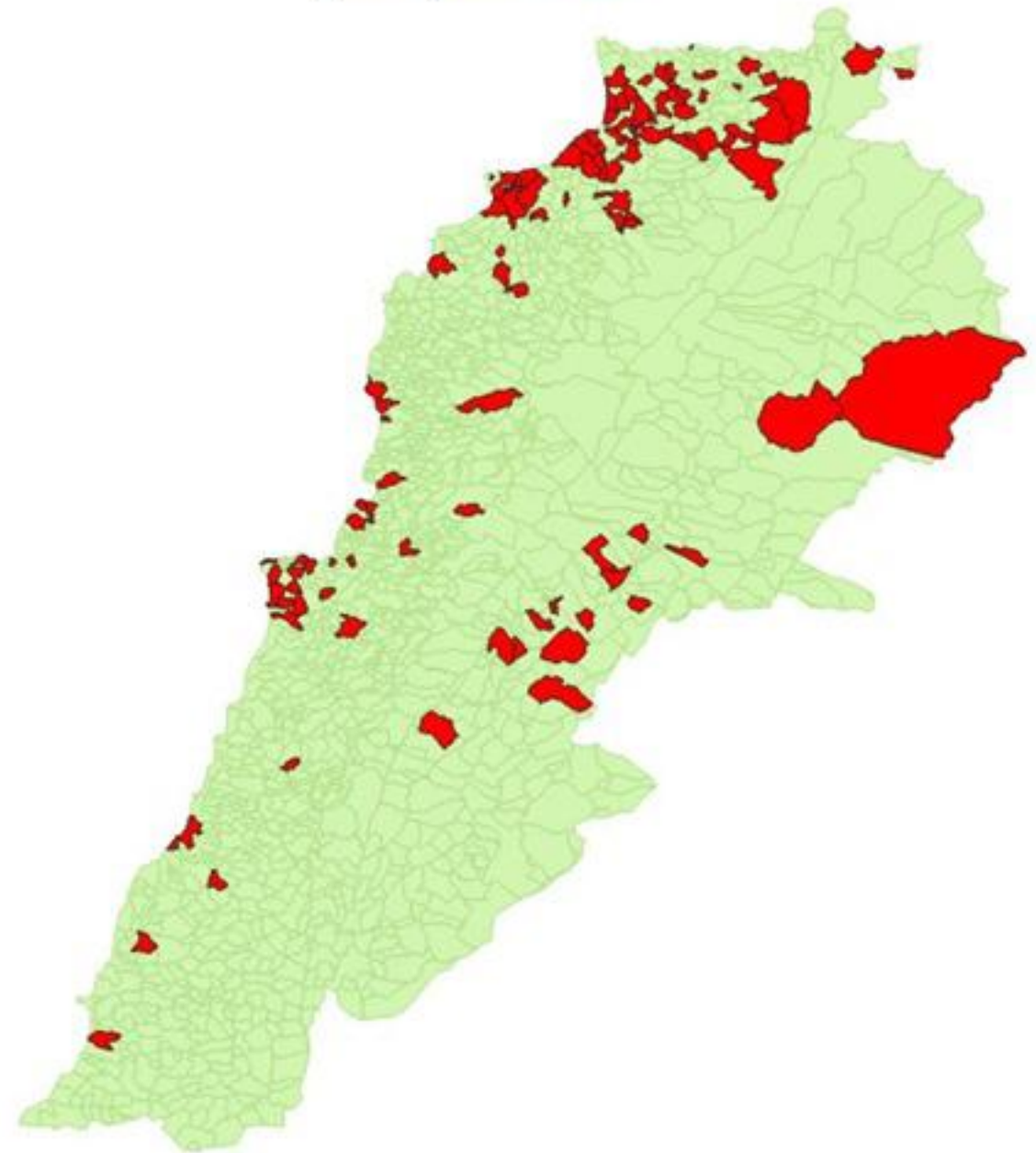
Epicurves by date of reporting by province
(suspected and confirmed)



Cholera Surveillance Update

10 Nov 2022

By locality (confirmed)
حسب البلدة (المتنبئة)



Figures in table are subject to modification following updates and data correction

Caza	Locality	cases	Caza	Locality	cases		
Akkar	Akkar Atika	1	Chouf	Beqaata	1		
	Amayer/Ouadi Khaled	1		Zaarouriyeh	1		
	Arqa / Marlayet Haddara	2		Jbeil	Amchit	1	
	Bebnine / Baddoua	130			Ehmej	1	
	Beit Hajj/Koucha/Khrebit Jindi	3			Jbeil	1	
	Berqayel	4			Mastita	2	
	Bezbina	1		Kesrwan	Aintoura	1	
	Bireh	2			Bqaatouta	6	
	Bqerzla	1			Ghazir	2	
	Cheikh Ayache / Chir Hmainine	3			Jounieh Ghadir	4	
	Dahr Qambar /Hokr Qatteh	2			Jounieh Sarba	4	
	Fneydek	2	Zouk Masbeh		3		
	Halba	1	Koura	Aaba	1		
	Hayssa	1		Dahr Ain / Ras Masqua	1		
	Hoouich	3		Rechdibbine	1		
	Jdeidat Qaytee	2		Kfar Aqa	1		
	Kfar Harra	4		Metn	Bikfaya	1	
	Kfar Melki	1	Bsalim		1		
	Khirbet Char	2	Daoura/Borj Hammoud		2		
	Kneisset Hnaider	1	Mansourieh		2		
	Kouachra	1	Zalqa		1		
	Koueikhat	2	Minieh Danieh		Aadoua	1	
	Machha	2			Assoun	5	
	Majdala	2			Bakhaaoun	3	
	Memneaa	1			Bhanine / Zouk Bhanine	6	
	Mhamarah / Nahr Bared / Abdeh	11			Kfar Chellane	2	
	Miniara	3		Merkebt	2		
	Mqyatea	1		Minieh	13		
	Ouadi Jamous	7		Quatiyeh	1		
	Qaabrine / Tal Hayat	7		Qattine	2		
	Qbaiyat	1		Rihanieh	33		
	Qjayat Akkar	2	Sir Dannieh	2			
	Qobet Chamra	11	Nabatieh	Zafta	1		
	Rahbeh	1		Saida	Ghazieh	2	
	Ransiyeh / Deir Dalloum	1	Kharayeb		3		
	Saadine	4	Sour		Deir Qanoun Ain	4	
	Tell Abbas Charqui	2			Baddawi	10	
	Tiel	1		Mina	3		
	Zouq Haddara	1		Qobbah	14		
	Zouq Hosnieh	3		Tripoli Gardens	1		
	Aley	Aley		1	Tripoli	Tripoli Haddadine	1
		Hay Selloum/Choueifat	1	Tripoli Nouri		1	
		Baabda	Borj Brajneh	3		Tripoli Souayqa / Jisrain	3
			Ghbayreh/Chiyah	1		Tripoli Tabbaneh	13
			Hadath	2		Tripoli Zeitoun	3
	Baalbeck	Arsal	27	West Beqaa		Kefraya	1
		Kfar Dabache	2		Zahleh	Bar Elias	2
Khodr		1	Dalhameh			1	
Temnine Fouqa		1	Haouch Mandra			1	
Temnine Tahta		9	Hawch Omara			7	
Younine		1	Majdal Anjar			1	
Batroun	Chikka	1	Qob Elias			9	
	Beirut	Achrafieh	2			Razit	8
Ain Mraisseh		1	Saadnayel			11	
Mdaouar / Mar Mikhael		1	Zahleh Maalaka			2	
Msaitbeh		1	Zghorta			Bchannine	1
				Mejdalya Zghorta		6	
		Miriata		4			
		Tallet Zghorta		1			
		Zghorta		3			