

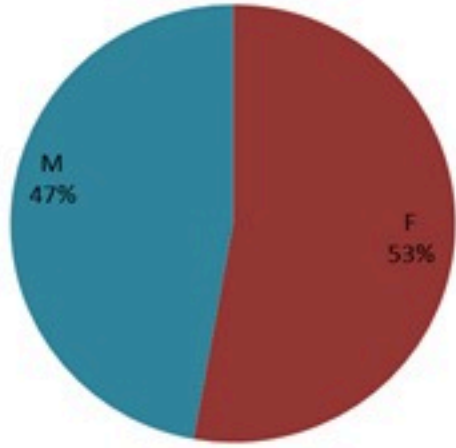
ترصد الكوليرا في لبنان 27 كانون الاول 2022

الجمهورية اللبنانية
وزارة الصحة العامة
برنامج الترصد الوبائي



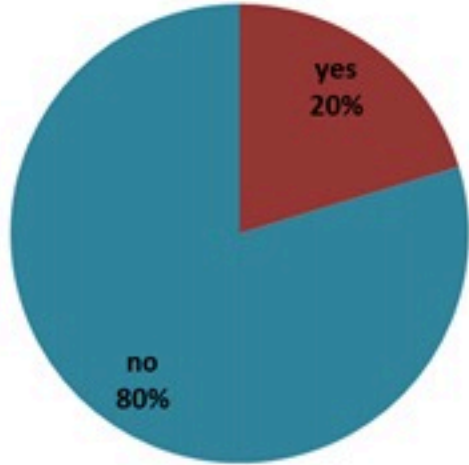
الخطوط الساخنة

1760 (الصليب الأحمر)
1787 (وزارة الصحة)

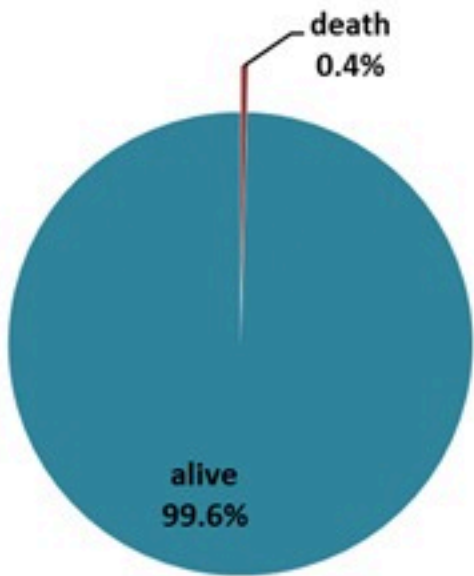
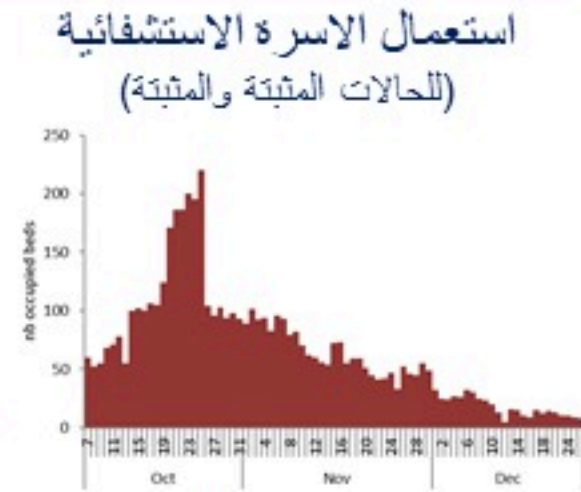


حسب الجنس
(المشبهة والمتبنة)

الوفيات (المتبنة)		الحالات المثبتة		كافة الحالات المشبهة والمتبنة	
التراكمي	الجديدة (آخر 24 ساعة)	التراكمي	الجديدة (آخر 24 ساعة)	التراكمي	الجديدة (آخر 24 ساعة)
23	0	668	0	5628	7



حسب الاستشفاء
(المشبهة والمتبنة)



حسب تطور
الحالة
(المشبهة والمتبنة)



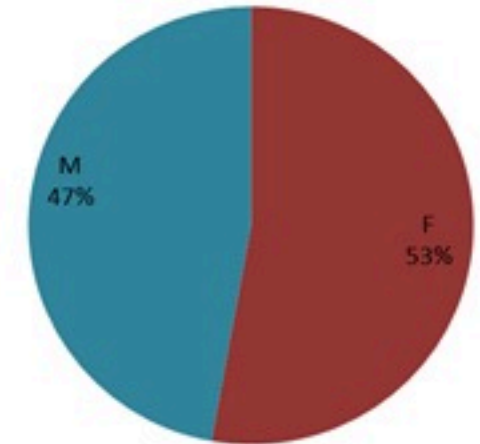
Cholera Surveillance Report

27 Dec 2022

Call Centers
 1760 (Red Cross)
 1787 (MOPH)

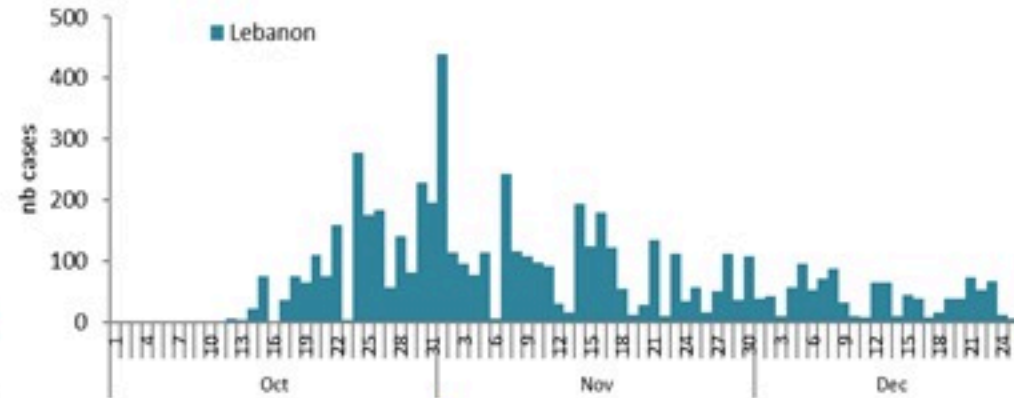
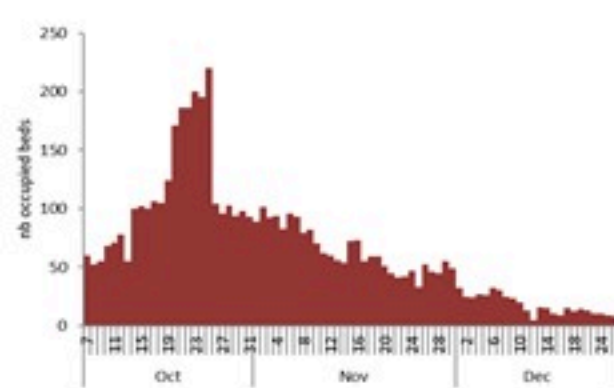
All cases (suspected and confirmed)		Confirmed Cases		Deaths (confirmed)	
New (past 24 h)	Cumulative	New (past 24 h)	Cumulative	New	Cumulative
7	5628	0	668	0	23

By Sex
(suspected and confirmed)

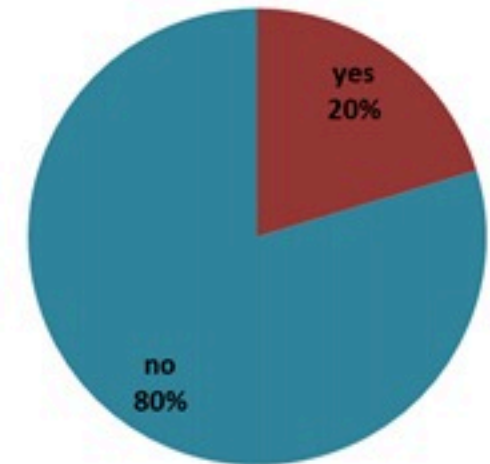


Occupied hospital beds
(suspected and confirmed)

By date of report
(suspected and confirmed)

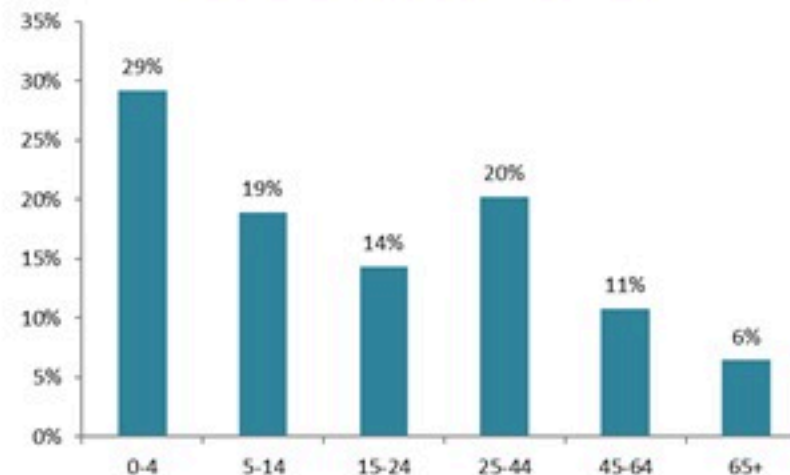


By Hospital Admission
(suspected and confirmed)

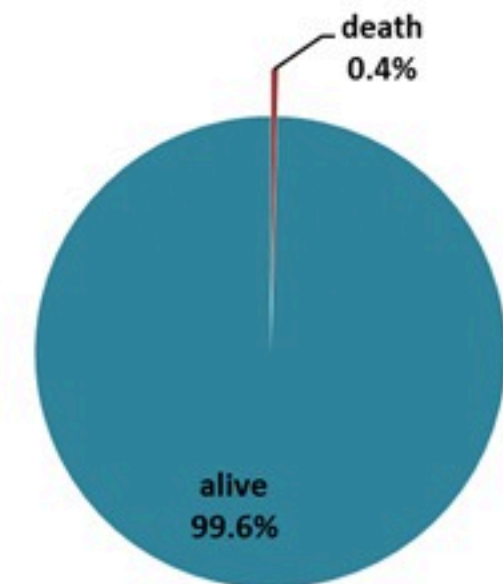


By locality (confirmed cases)

By age group
(suspected and confirmed cases)



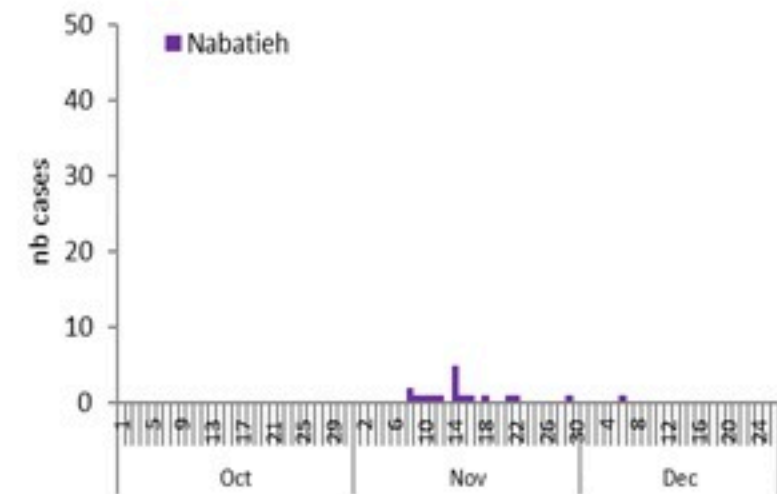
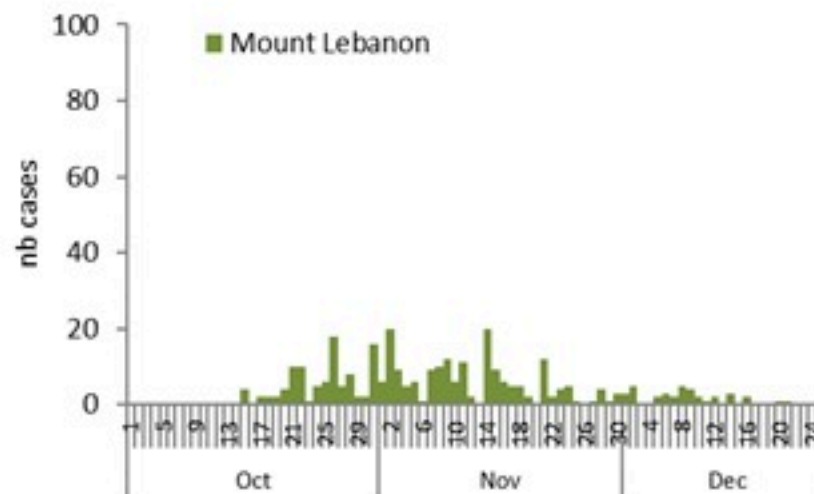
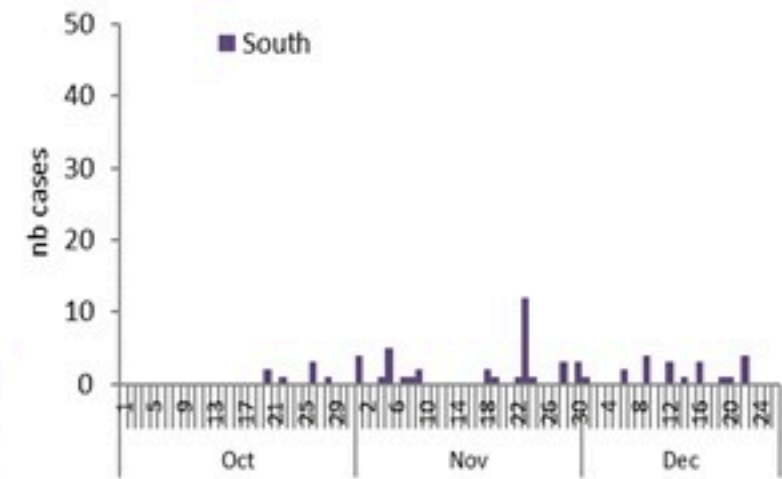
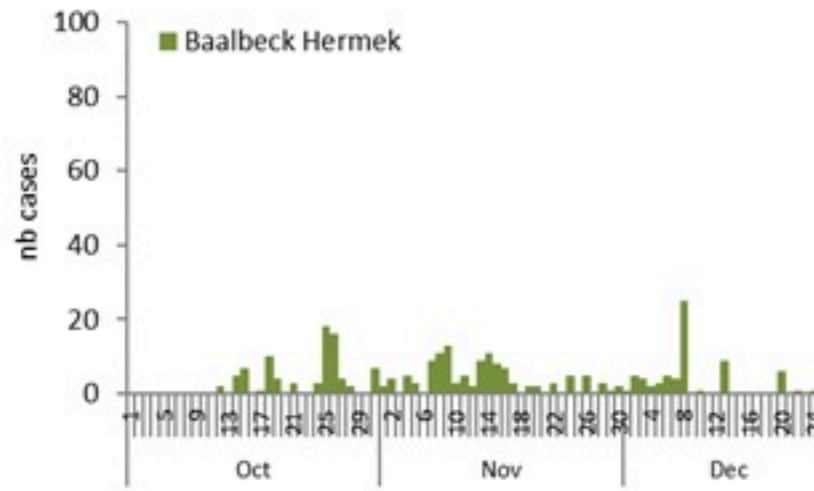
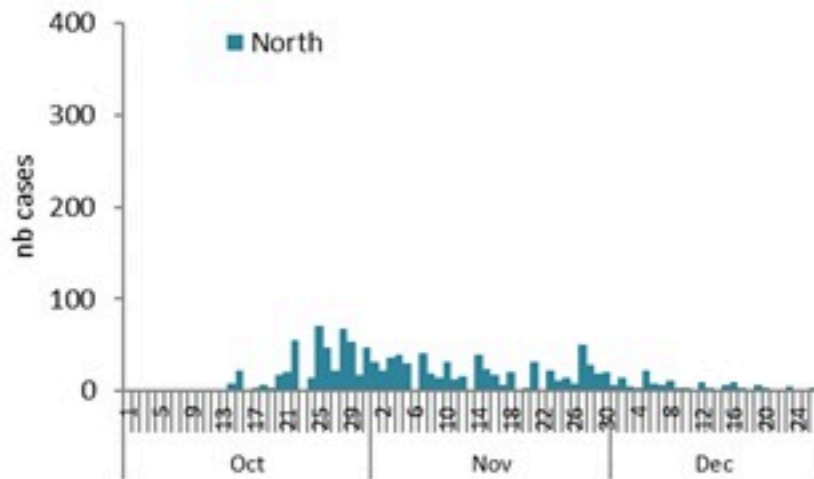
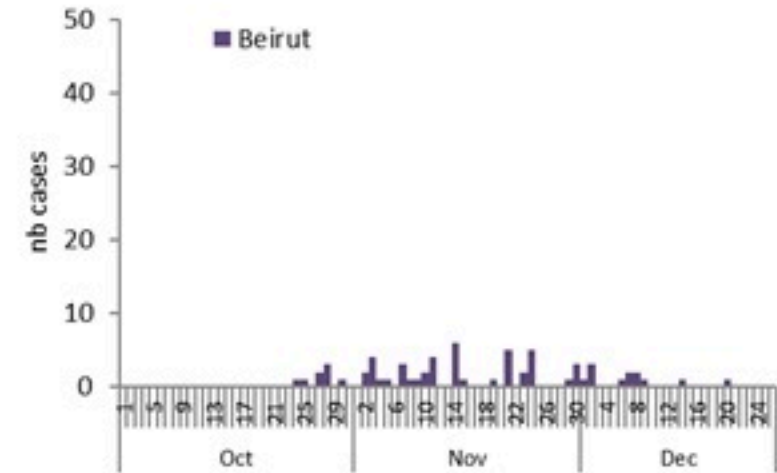
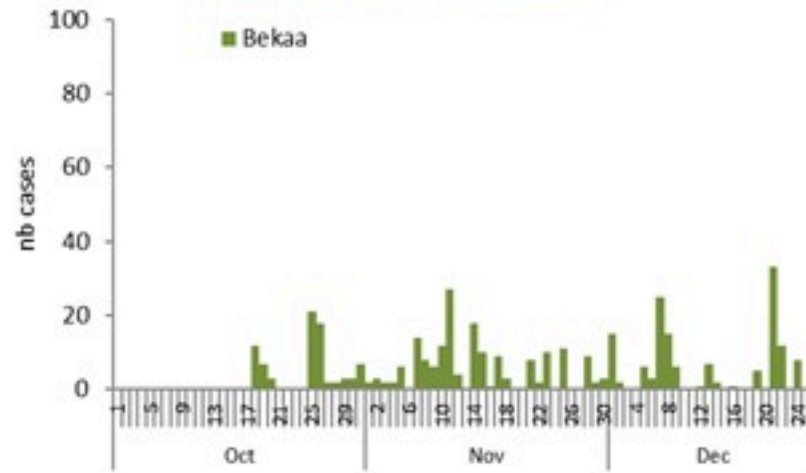
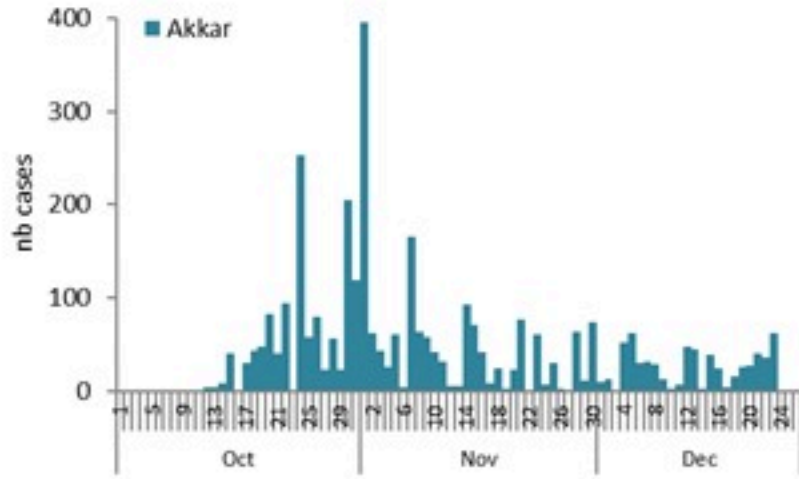
By Outcome
(suspected and confirmed)



Cholera Surveillance Report

27 Dec 2022

Epicurves by date of reporting by province (suspected and confirmed)



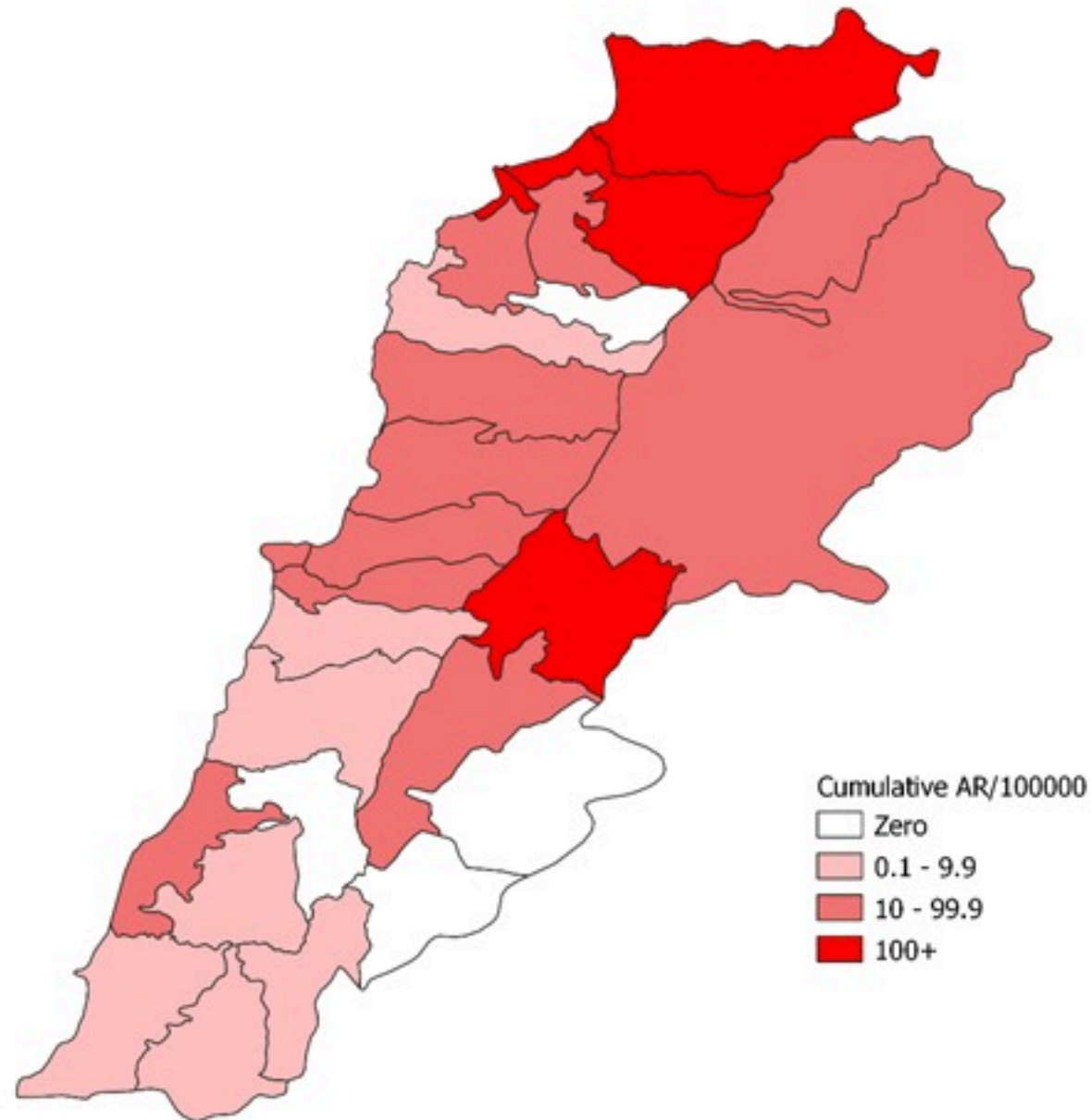
Cholera Surveillance Update

27 Dec 2022

4

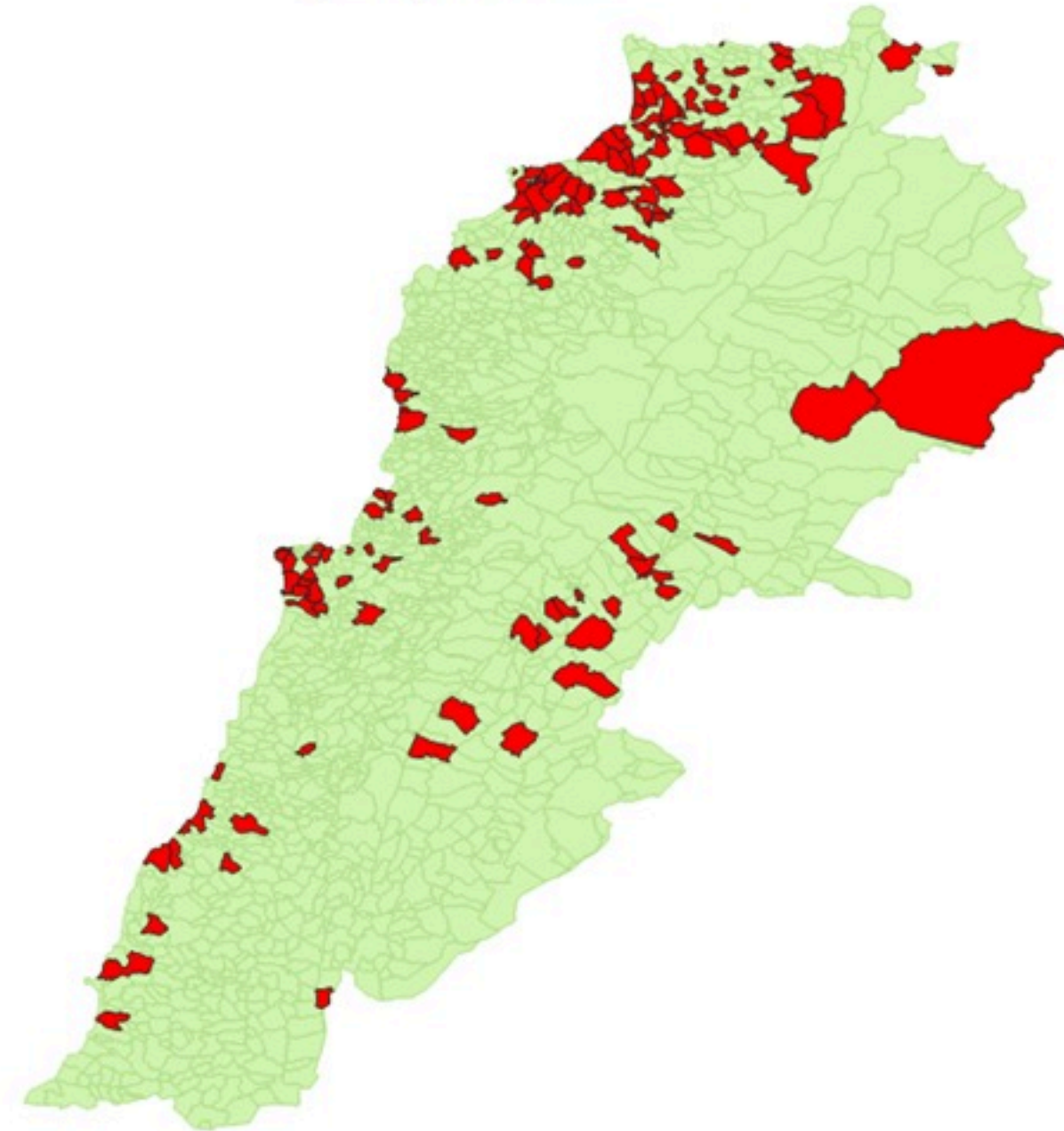
Cumulative Attack Rate per 100,000 (suspected and confirmed)

نسبة الحدوث التراكمية لكل مئة ألف نسمة (الحالات المشتبهية والمثبتة)



Cholera Surveillance Update 27 Dec 2022

By locality (confirmed)
حسب البلدة (المتتبعة)



Figures in table are subject to modification following updates and data correction

Case	Locality	cases	Case	Locality	cases
Akkar	Akkar Atika	1	Kiswan	Aintouna	1
	Amayer/Quadi Khaled	1		Balfounh	1
	Arqa / Marlayet Haddara	2		Bqatouta	7
	Bebnine / Baddoua	160		Ghair	2
	Beit Hajj/Koucha/Khreibit Jindi	13		Jounieh Ghadir	4
	Bergayel	1		Jounieh Sabra	4
	Bezbina	1		Yahchouch	1
	Bireh	2		Zouk Mosbeh	3
	Bqerzia	1	Kouna	Aaba	1
	Chelkh Ayache / Chir Hmairine	1		Aufdiq	1
	Dahr Qambar /Hokr Qatfeh	13		Basa	1
	Dabadab	1		Bsama	1
	Dinbou	1		Dahr Ain / Ras Masqua	1
	Fneydek	1		Rachdibbine	1
	Halba	1		Kfar Aqa	1
	Hayssa	1	Marjoun	Adayssah	1
	Hoculch	1	Matn	Biklaya	1
	Jdeidat Qaytee	13		Broummata	1
	Kfar Harra	4		Bsalim	1
	Kfar Melki	1		Daruna/Borj Hammoud	2
	Khane Hayat	1		Mansourieh	3
	Khirbet Char	2		Zalqa	1
	Kneisset Hnaldar	1	Minieh Danieh	Aadoua	1
	Kouchra	1		Assoun	4
	Kouekhat	2		Ain El Timh	1
	Machha	1		Bahsa	1
	Majdala	2		Bakhaoum	4
	Memneaa	1		Bhanine / Zouk Bhanine	7
	Mhamarah / Nahr Bared / Abdeh	22		Btamar	6
	Minlara	13		Douniya	1
	Mqyatea	1		Kfar Chollane	2
	Quadi Jamous	11		Kfar Habou	1
	Qabrine / Tal Hayat	7		Makabta	2
	Qbalyat	1		Minieh	18
	Qlayat Akkar	2		Qatayeh	1
	Qobet Chamra	17		Qatime	3
	Rahbeh	1		Rihanieh	35
	Randiyeh / Deir Dalloum	1		Sir Daniieh	5
	Saadine	4	Saida	Aanqoun	1
	Tell Abbas Charqui	2		Bissariyeh	4
	Tleil	1		Ghazieh	2
	Zouq Haddara	1		Khawayb	3
	Zouq Hosnieh	13		Saida	1
Aley	Aley	1		Sawfand	1
	Hay Selloum/Chouefat	1	Sour	Abbasiyeh	1
Baabda	Ain Roummaneh	1		Deir Qaroun Ain	4
	Borj Brajneh	13		Baddawi	16
	Ghbayreh/Chiyah/Sabra	1		Mina	7
	Hadath	13		Qobbah	21
	Haret Hireik	1		Tripoli Bab Raml	1
	Kfar Chima	1		Tripoli Gardans	2
	Mreijih	2		Tripoli Haddadine	1
Baalbeck	Arsal	27		Tripoli Nouri	1
	Kfar Dabache	2		Tripoli Souayqa / Jsrain	3
	Khodr	2		Tripoli Tabbaneh	21
	Temnine Faouqa	1		Tripoli Zaitoun	15
	Temnine Tahta	1	West Beqaa	Kamel Jaruz	1
	Younine	1		Kufaya	1
Batroun	Chikka	1		Saghbine	1
Beirut	Achrafieh	2	Zahleh	Aali Nahri	2
	Ain Miralssch	1		Bar Elias	2
	Hamra	1		Dalhamieh	2
	Mdaouar / Mar Mikhael	1		Hazuch Mandra	1
	Msaltbeh	1		Hawch Omara	7
Chouf	Zaarouriyeh	1		Majdal Anjar	1
Jbeil	Amchit	1		Qob Elias	9
	Ehmej	1		Raait	11
	Halate	1		Saadnayd	11
	Jbeil	1		Tadabaya	2
	Mastita	2		Zahleh Madaka	2
			Zghorta	Aalma	1
				Andeh	1
				Kfar Dhaqous	2
				Majdalya Zghorta	7
				Miriata / Fozur	3
				Sabwad	1
				Zghorta	5

Cholera weekly incidence rate/100,000

