

2024  
15 December



Acute Flaccid Paralysis & Poliovirus Surveillance Indicators  
Republic of Lebanon—Ministry of Public Health

## Worldwide (www.polioeradication.org)

Globally, last week — Wild Poliovirus WPV1 was detected in Pakistan (3 AFP, 15 ES).

Circulating Vaccine Derived Poliovirus cVDPV2 was detected in Algeria (1 ES), Chad (2 AFP), Ivory Coast (1 ES), Djibouti (2 ES), Niger (1 ES), Nigeria (5 AFP) and Palestine (6 ES).

Table (1): Worldwide Polio positive samples

Virus	Sources	Cumulative 2023	Cumulative 2024	Last week	Notes
WPV1	AFP	12	84	3	Afghanistan, Pakistan
	ES/Other	189	679	15	
cVDVP1	AFP	134	10	0	Madagascar, DR Congo
	Other	7	1	0	
cVDPV2	AFP	395	221	7	Last week: Algeria, Chad, Ivory Coast, Djibouti, Niger, Nigeria, Palestine
	ES	351	204	10	
	Other	134	86	0	
cVDPV3	AFP	0	3	0	Guinea, France
	ES	0	3	0	
	Other	0	0	0	

AFP Acute Flaccid Paralysis case, ES Environmental Surveillance

## Lebanon — Summary indicators

Lebanon — During the past week, one new case was reported, from the North, under 1 year, had received 2 doses of polio vaccine. As cumulative, 65 AFP cases were reported from 8 provinces. No poliovirus (wild or vaccine-derived) was detected.

Table 2: National indicators for AFP surveillance, 2024

Indicator	Value	Target
AFP last 2 weeks (nb)	1	1+
Total AFP (nb)	65	
Annualized NP AFP rate (/100000)	4.12	2+
Specimen adequacy (%)	89.2%	80+
Notification within 7 d (%)	78.5%	80+
Investigation within 48h (%)	100.0%	80+
Zero dose AFP (6m-59m) (nb)	1	
NPEV among specimens (%)	1.9%	10+
Sabin virus (nb)	0	
Vaccine Derived Poliovirus (nb)	0	0
Wild Poliovirus (nb)	0	0
Final classification (nb)	54	

Table 3: AFP/Polio surveillance indicators by province

Province	AFP cases, 2024					Zero reporting		Environmental surveillance, 2024			
	AFP (n)	NP AFP rate (/100000)	Adequacy (%)	Notified in 7 d (%)	Zero dose	Nb received reports	% Completeness	Apr	May	Jun	Jul
North	15	7.0	87%	80%	0	1118	95%	NPEV	NPEV/SL3	NPEV	NPEV
Akkar	8	5.4	75%	50%	0	831	100%				
Bekaa	7	3.9	86%	57%	0	418	85%				
Baalbeck Hermel	6	5.0	100%	83%	0	869	93%	NPEV/SL3	NPEV/SL1/S L3	NPEV	NPEV
South	5	2.5	80%	80%	0	2190	96%	NPEV	NPEV/SL1	NPEV / SL3	NPEV
Nabatieh	5	4.4	100%	80%	0	782	94%				
Beirut	4	5.6	100%	100%	0	244	100%				
Mount-Lebanon	15	2.8	93%	93%	1	558	95%	NPEV/SL3	NPEV	NPEV	NPEV

Table 4: Indicators by district, 2024

District	AFP	Rate/100,000	Adequacy (%)
Caza			
Akkar	8	7.55	75%
Aleyh	8	11.59	88%
Baabda	4	3.11	100%
Baalbeck	5	8.80	100%
Batroun	1	6.64	100%
Becharreh	0		
Beirut	4	6.02	100%
West Bekaa	2	7.11	100%
Bint Jbeil	0		
Chouf	0		
Hasbaya	0		
Hermel	1	11.47	100%
Jbeil	1	3.58	100%
Jezzine	0		
Kesrwan	0		
Koura	2	9.28	50%
Marjeoun	0		
Minieh Danieh	6	16.81	100%
Metn	2	1.80	100%
Nabatieh c	5	10.40	100%
Rashaya	0		
Saida	4	4.53	75%
Sour	1	1.28	100%
Tripoli	5	8.00	80%
Zahleh	5	7.99	80%
Zghorta	1	4.46	100%

Fig 1: AFP cases by week, 2024

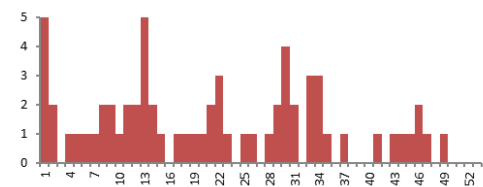


Table 3: Indicators by nationality, 2024

Population	AFP (n)	Annualized rate /100000	Specimen adequacy (%)	Notified within 7 d (%)
Resident	50	4.73	90%	76%
Palestinian	1	1.10	100%	100%
Syrian	14	3.28	86%	86%