

The sentinel surveillance system relies on collection of data and sample from patients from selected health facilities (hospitals and medical centers) distributed in the 8 provinces. Data is managed via DHIS2. Samples are tested at the National Influenza Center.

For the past 4 weeks, the sentinel for inpatients, enrolled 88 cases. Positivity rates were 1% for COVID-19 and 11% for Influenza, with dominance of seasonal Influenza B Victoria, followed by AH1pdm.

For the past 4 weeks, the sentinel for outpatients, enrolled 296 cases. Positivity rates were 4% for COVID-19 and 19% for Influenza, with dominance of seasonal Influenza B Victoria, followed by AH1pdm and AH3.

In summary, the influenza season is still dominant with dominance of Influenza B Victoria.

### Severe Acute Respiratory Infection—Sentinel Surveillance for Inpatients

Fig 1: Weekly nb samples and COVID-19 positivity % (inpatient)

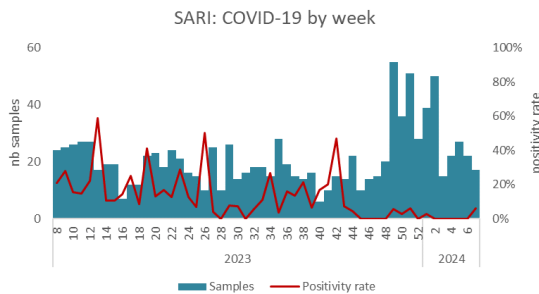
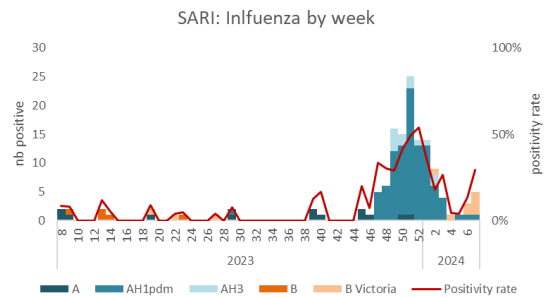


Fig 2: Weekly nb of positive Influenza and positivity % (inpatient)



### Influenza / COVID-19 Like Illness - Sentinel Surveillance for outpatients

Fig 3: Weekly nb of positive Influenza and positivity % (outpatient)

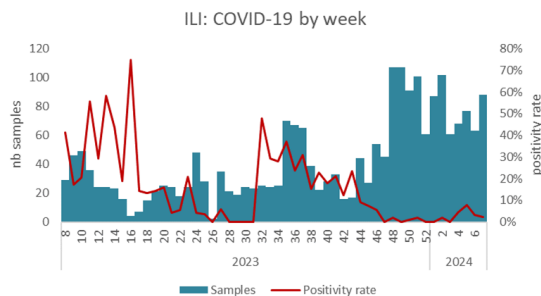
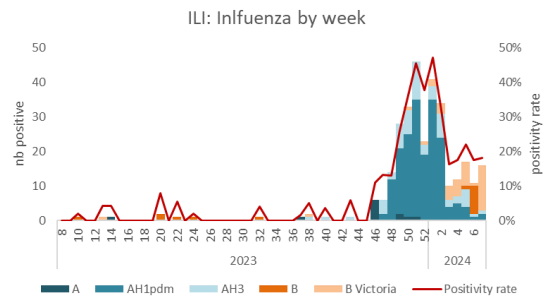


Fig 4: Weekly nb of positive Influenza & positivity % (outpatient)



### Pandemic Influenza Severity Assessment (PISA)

Fig 5: Weekly ratio of Acute Respiratory Infection/Medical centers

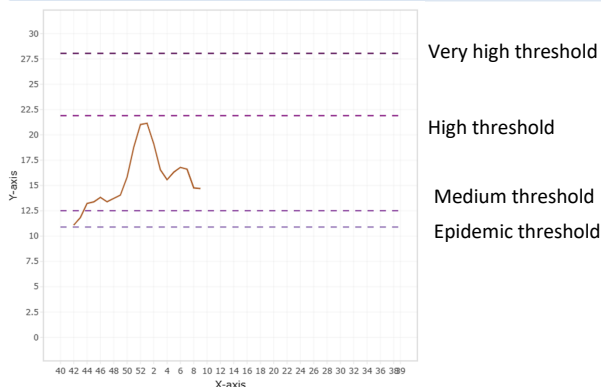


Fig 6: PISA by week

Season	2023												2024								
	40	41	42	43	44	45	46	47	48	49	50	51	52	1	2	3	4	5	6	7	
Transmissibility	Low	Low	Low	Low	Moderate	Moderate	Moderate	Moderate	Moderate	Moderate	Moderate	Moderate	Moderate	Moderate	Moderate	Moderate	Moderate	Moderate	Moderate	Moderate	Moderate

Low
Moderate
High
Extraordinary