

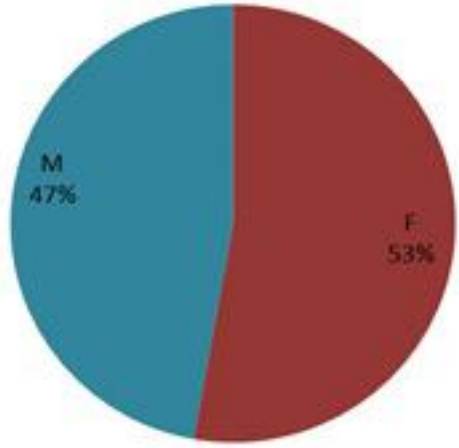
# ترصد الكوليرا في لبنان 21 كانون الاول 2022

الجمهورية اللبنانية  
وزارة الصحة العامة  
برنامج الترصد الوبائي



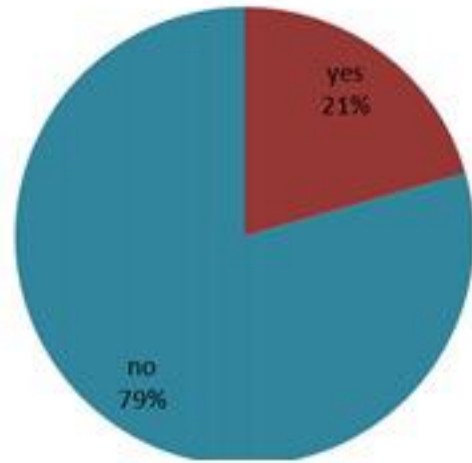
## الخطوط الساخنة

1760 (الصليب الأحمر)  
1787 (وزارة الصحة)



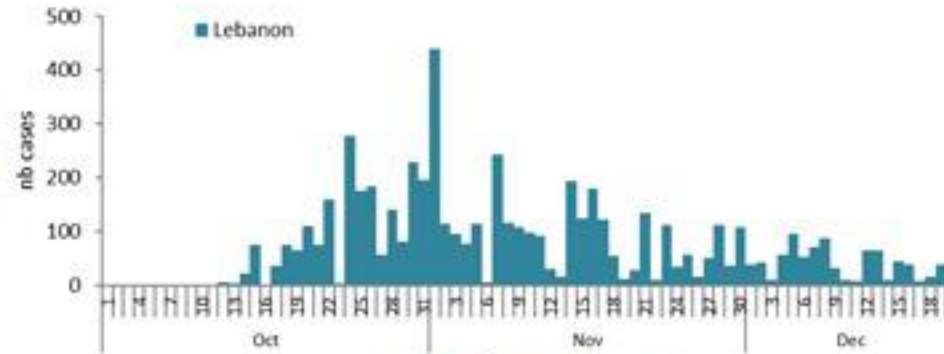
حسب الجنس  
(المشبهة والمثبتة)

الوفيات (المثبتة)		الحالات المثبتة		كافة الحالات المشبهة والمثبتة	
التراكمي	الجديدة (آخر 24 ساعة)	التراكمي	الجديدة (آخر 24 ساعة)	التراكمي	الجديدة (آخر 24 ساعة)
23	0	663	0	5411	39

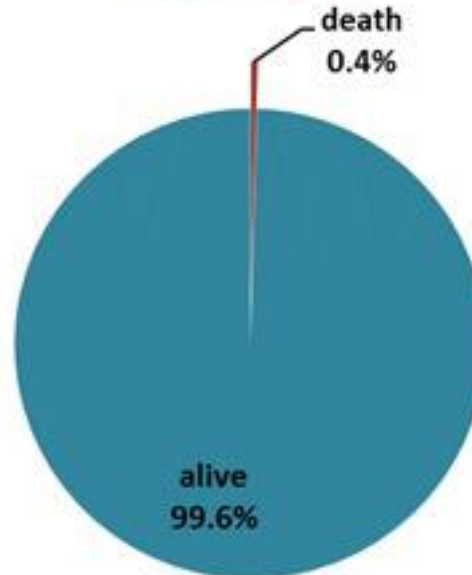


حسب الاستشفاء  
(المشبهة والمثبتة)

حسب تاريخ الإبلاغ  
(للحالات المثبتة والمثبتة)

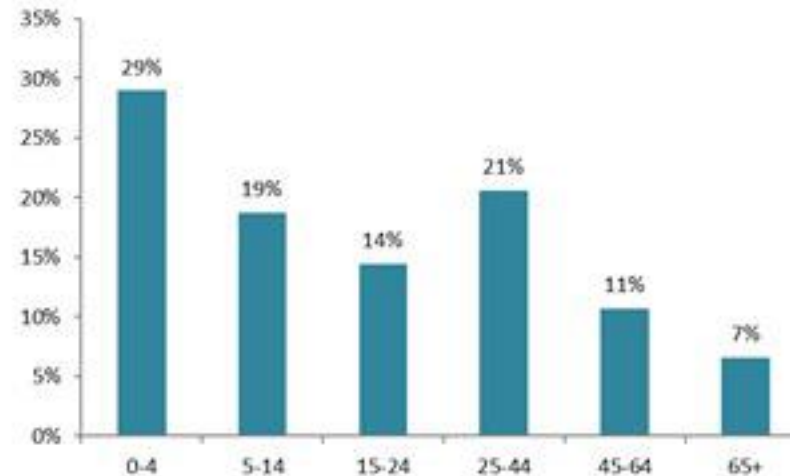


استعمال الاسرة الاستشفائية  
(للحالات المثبتة والمثبتة)



حسب تطور  
الحالة  
(المشبهة والمثبتة)

حسب الفئة العمرية  
(للحالات المشبهة والمثبتة)



حسب البلدة  
(للحالات المثبتة)



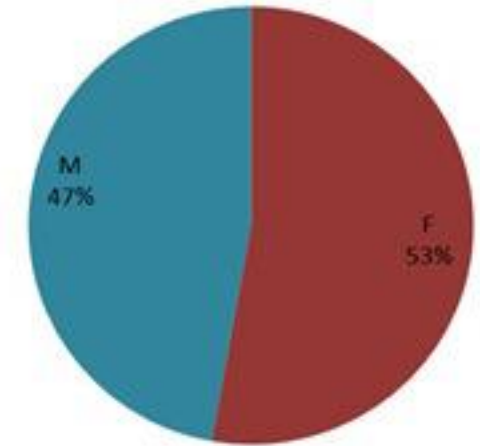
# Cholera Surveillance Report

## 21 Dec 2022

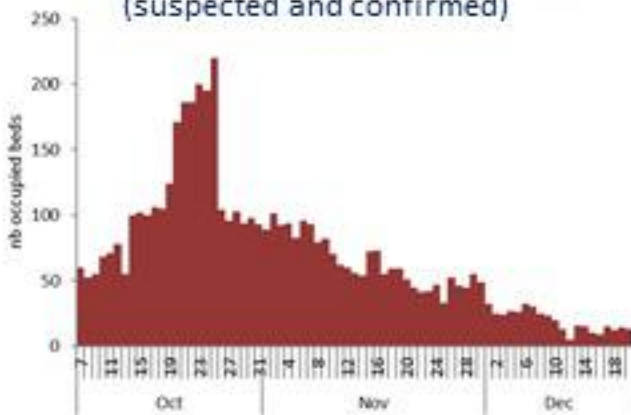
**Call Centers**  
 1760 (Red Cross)  
 1787 (MOPH)

All cases (suspected and confirmed)		Confirmed Cases		Deaths (confirmed)	
New (past 24 h)	Cumulative	New (past 24 h)	Cumulative	New	Cumulative
<b>39</b>	<b>5411</b>	<b>0</b>	<b>663</b>	<b>0</b>	<b>23</b>

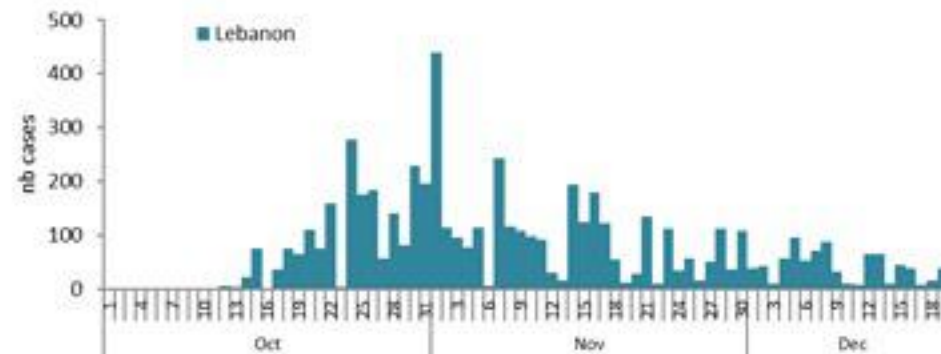
By Sex  
(suspected and confirmed)



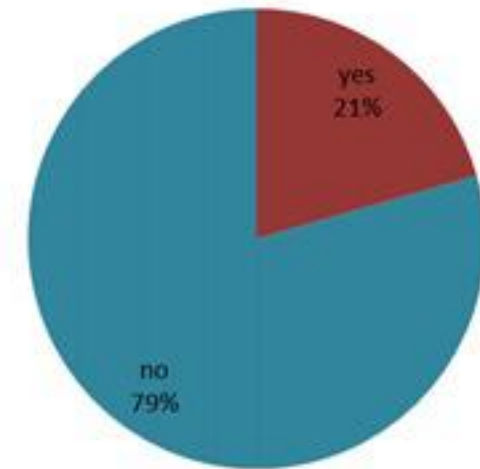
Occupied hospital beds  
(suspected and confirmed)



By date of report  
(suspected and confirmed)



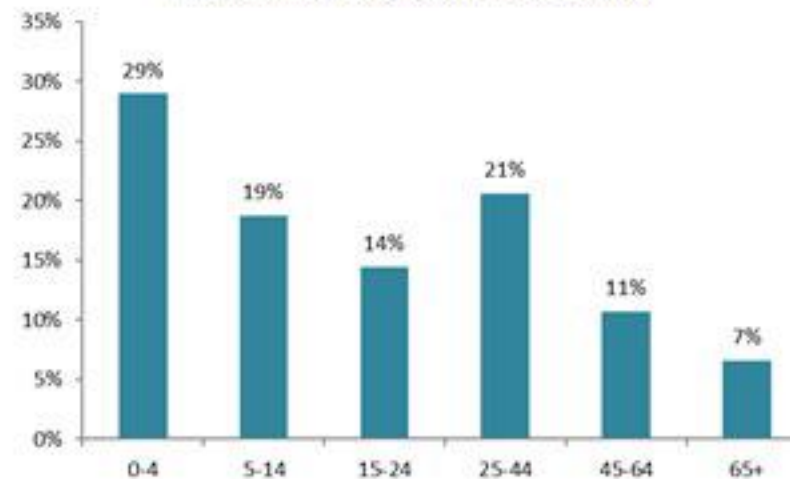
By Hospital Admission  
(suspected and confirmed)



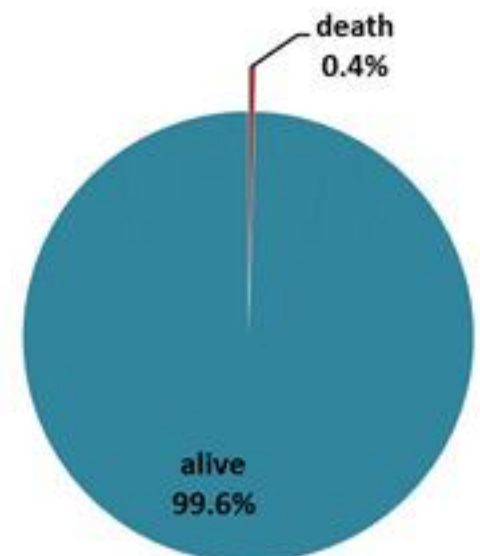
By locality  
(confirmed cases)



By age group  
(suspected and confirmed cases)



By Outcome  
(suspected and confirmed)

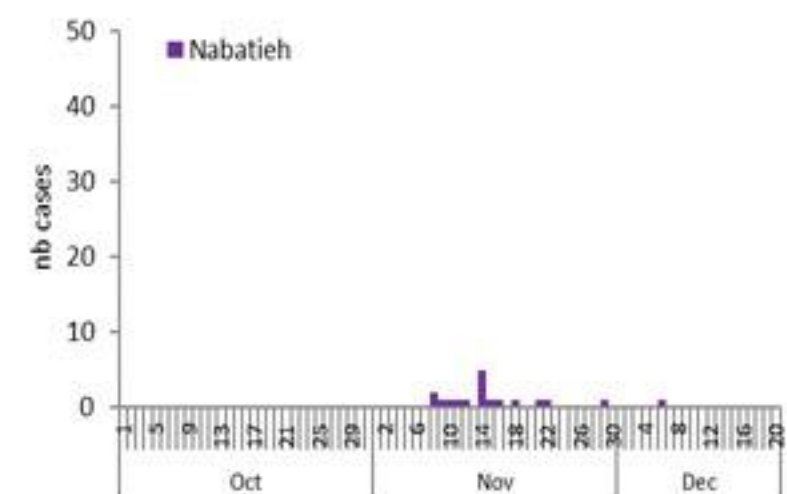
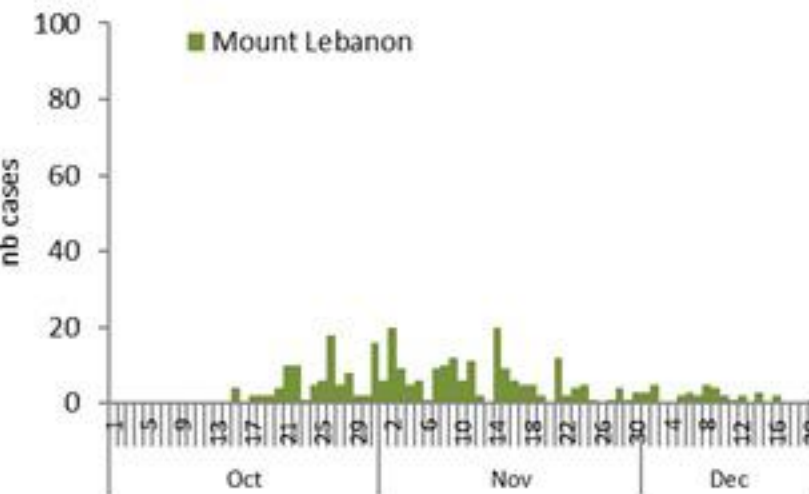
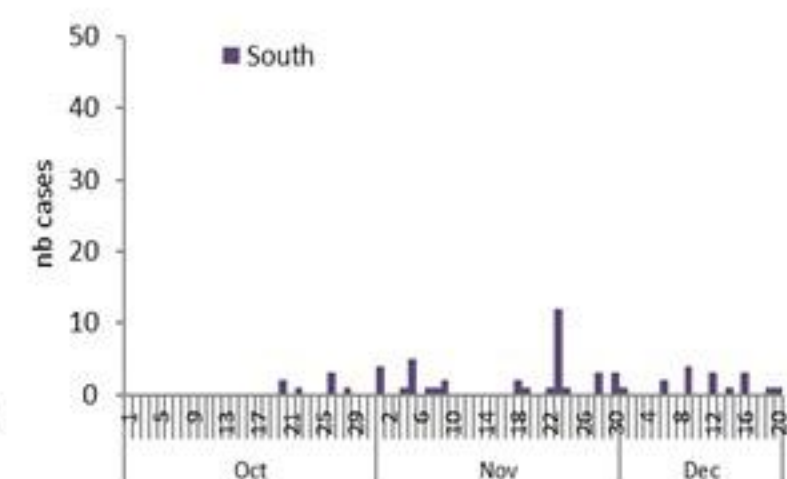
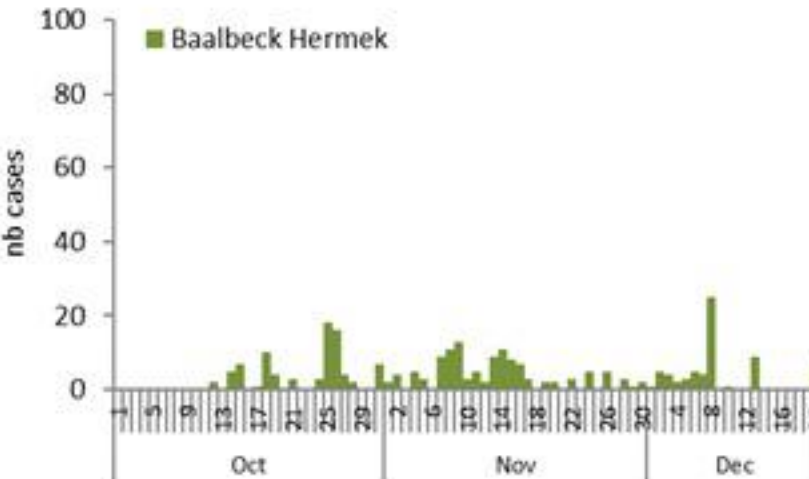
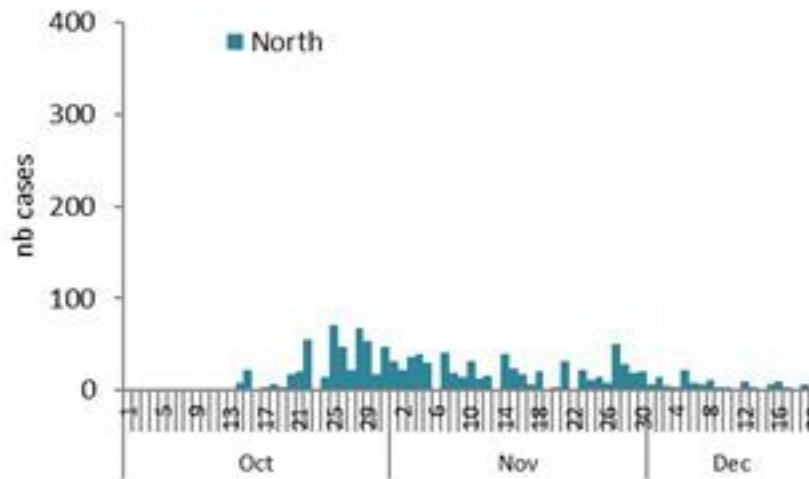
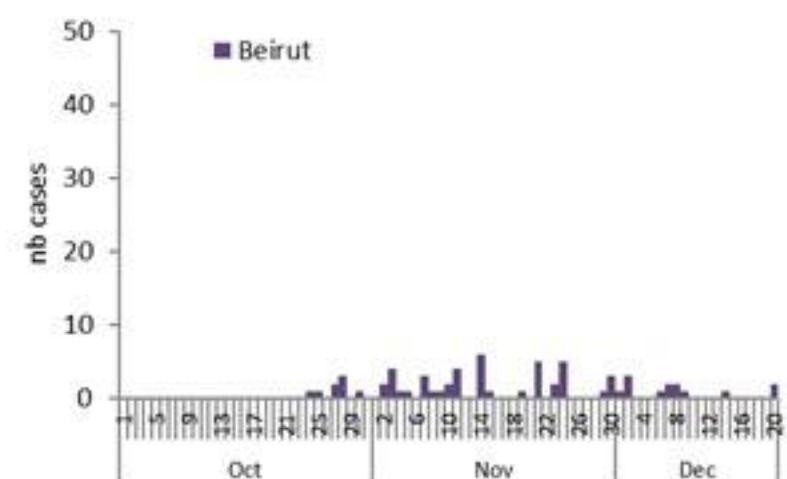
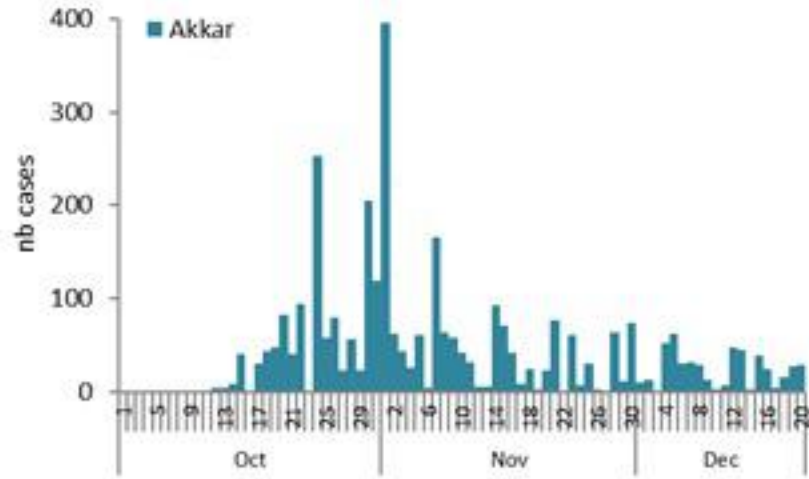




# Cholera Surveillance Report

## 21 Dec 2022

Epicurves by date of reporting by province (suspected and confirmed)



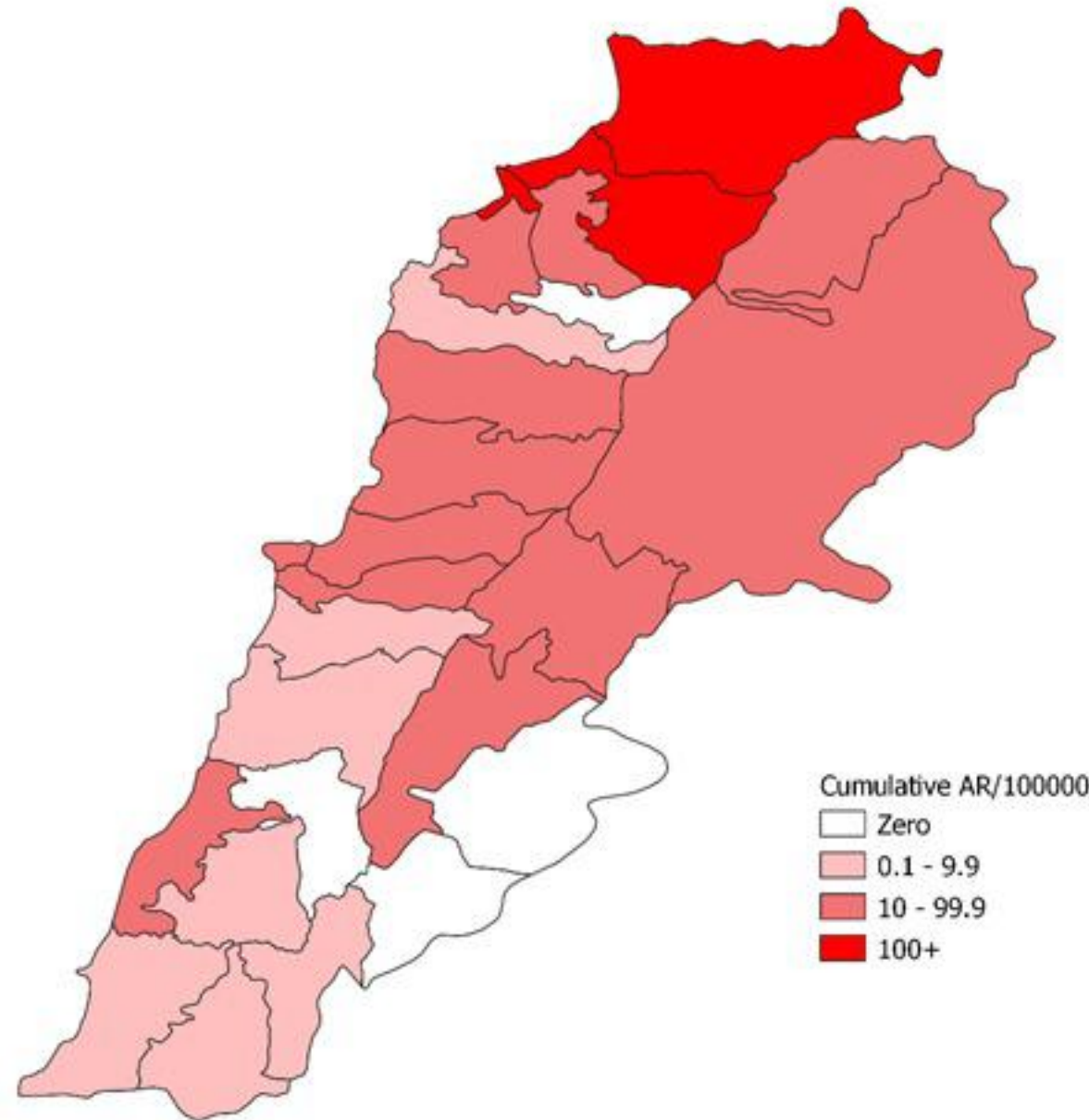
# Cholera Surveillance Update

21 Dec 2022

4

Cumulative Attack Rate per 100,000 (suspected and confirmed)

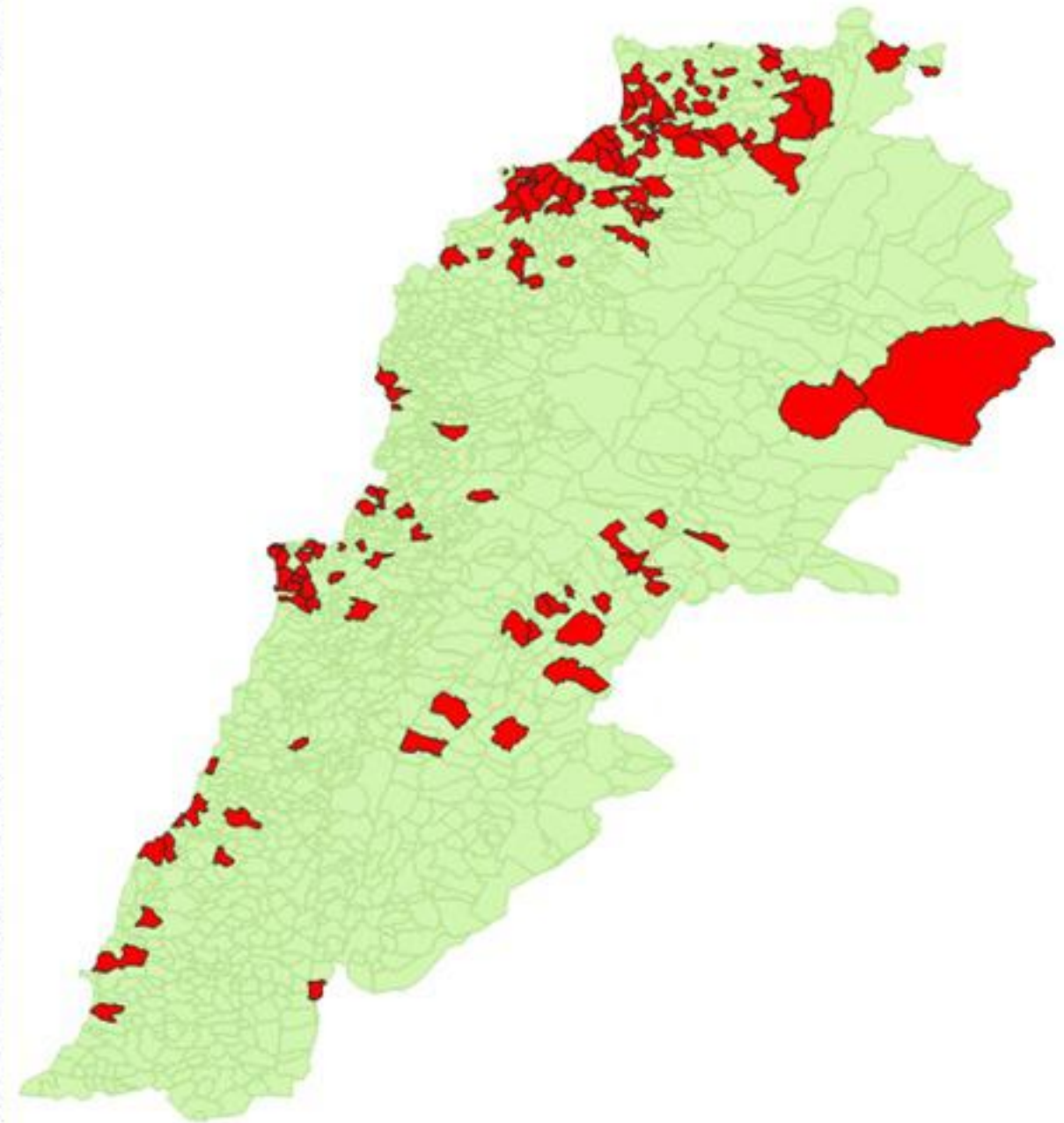
نسبة الحدوث التراكمية لكل مئة ألف نسمة (الحالات المشتبهية والمثبتة)





# Cholera Surveillance Update 21 Dec 2022

By locality (confirmed)  
حسب البلدة (المتبئة)



Figures in table are subject to modification following updates and data correction

Locality	Cases	Locality	Cases
Akkar Atika		Kiswan	1
Amayer/Quadi Khaled		Aintouna	1
Arqa / Marlayet Haddara		Balfounh	1
Bebrine / Baddoua	160	Bqarouta	7
Beit Hajj/Koucha/Khreibit Jindi		Ghair	2
Berqayel		Jounieh Ghadir	4
Bezbina		Jounieh Sabra	4
Birch	2	Yahchouch	1
Bqerzla		Zouk Mosbeh	3
Cheikh Ayache / Chir Hmairine		Koura	
Dahr Qambar /Hokr Qatfeh		Aaba	1
Dabadab		Aahdiq	1
Dinbou		Basa	1
Fneydek		Bsama	1
Halba		Dahr Ain / Ras Maqoua	1
Hayssa		Rachdibbine	1
Hoculch		Kfar Aqa	1
Ideldat Qaytee		Maqouron	1
Kfar Harra	4	Aadaysoh	1
Kfar Melki		Motr	
Khane Hayat		Bikfaya	1
Khirbet Char		Broummara	1
Kneisset Hnaldar		Bsalim	1
Kouchra		Daruna/Borj Hemmoud	2
Koulikhat		Mansouriah	3
Machha	2	Zalqa	1
Majdala	2	Miniah Danieh	
Memneaa		Aadoua	1
Mhamarah / Nahr Bared / Abdeh	22	Assoun	4
Minlara	3	Ain El Tineh	1
Mqyatec		Bahsa	1
Ouadi Jamous	11	Bakhaoun	4
Qaabrine / Tal Hayat	7	Bhanine / Zouk Bhanine	7
Qbalyat		Bamaa	6
Qlayat Akkar		Douniya	1
Qobet Chamra	17	Kfar Chollane	2
Rahbeh		Kfar Habou	1
Ransiyeh / Deir Dalloum		Merkaba	2
Saadine	4	Miniah	18
Tell Abbas Charqui	2	Qouatiyeh	1
Tleil		Qatine	3
Zouq Haddara		Rihanih	35
Zouq Hosniah		Sir Daniah	5
Aley		Saida	
Hay Selloum/Chouifat		Rantoun	1
Baabda		Bissariyeh	3
Alin Roummaneh		Gharish	2
Borj Brajneh		Khawayeb	3
Ghbayreh/Chiyah/Sabra	2	Saida	1
Hadath		Sawfand	1
Haret Hreik		Sour	
Kfar Chima		Abbasiyeh	1
Mrojjih		Deir Qanoun Ain	4
Baalbeck	27	Badawi	16
Arsal		Mina	7
Kfar Dabache	2	Qobbah	21
Khodr		Tripoli Bab Rami	1
Temnine Faouqa		Tripoli Gadias	1
Temnine Tahta		Tripoli Haddadine	1
Younine		Tripoli Nouri	1
Batroun		Tripoli Souayqa / Assan	3
Beirut		Tripoli Tabbaneh	20
Chikka		Tripoli Zeitoun	15
Achrafieh	2	West Beqaa	
Ain Mraissch		Kamel Jarou	1
Hamra		Kufaya	1
Mdaouar / Mar Mikhael		Saghbine	1
Msaibeh		Zahleh	
Chouf		Aali Nahri	2
Ibail		Bar Elias	2
Zaarouriyeh		Dalhameh	1
Amchit		Harouch Mandra	1
Ehmej		Hawch Orman	7
Ibail		Majdal Anjar	1
Mastita		Qob Elias	9
		Raait	11
		Saadinayd	11
		Tadabaya	2
		Zahleh Madaka	2
		Zghorta	
		Aalma	1
		Andoh	1
		Kfar Ozaqous	2
		Majdalya Zghorta	7
		Mirata / Faour	3
		Sabwal	1
		Zghorta	5