

2024  
16 July



## Worldwide (www.polioeradication.org)

Globally, last week — Wild Poliovirus WPV1 was detected in Afghanistan (3AFP) and Pakistan (8ES).

Last week positive findings, circulating Vaccine Derived Poliovirus cVDPV1 was detected in Mozambique (1AFP) and DR Congo (1AFP). cVDPV2 was detected in Angola (2AFP, 1ES), Chad (1AFP), DR Congo (2AFP), Guinea (1AFP), Niger (2ES), Senegal (2ES), Yemen (2AFP, 4ES), Zimbabwe (1ES).

Table (1): Worldwide Polio positive samples

Virus	Sources	Cumulative 2023	Cumulative 2024	Last week	Notes
WPV1	AFP	12	8	0	Pakistan, Afghanistan
	ES/Other	187	230	10	
cVDVP1	AFP	134	4	0	Madagascar, DR Congo, Mozambique
	ES	91	2	2	
	Other	7	0	0	
cVDPV2	AFP	390	73	6	Last week: Ethiopia, South Sudan, Yemen
	ES	334	87	1	
	Other	133	33	0	

AFP Acute Flaccid Paralysis case, ES Environmental Surveillance

## Lebanon — Summary indicators

Lebanon — During the past 2 weeks, 1 new case was reported from the North, aged under 5years, and vaccinated. As cumulative, 40 AFP cases were reported from 8 provinces. No poliovirus (wild or vaccine-derived) was detected.

Table 2: National indicators for AFP surveillance, 2024

Indicator	Value	Target
AFP last 2 weeks (nb)	1	1+
Total AFP (nb)	40	
Annualized NP AFP rate (/100000)	4.44	2+
Specimen adequacy (%)	90.0%	80+
Notification within 7 d (%)	82.5%	80+
Investigation within 48h (%)	100.0%	80+
Zero dose AFP (6m-59m) (nb)	0	
NPEV among specimens (%)	0.0%	10+
Sabin virus (nb)	0	-
Vaccine Derived Poliovirus (nb)	0	0
Wild Poliovirus (nb)	0	0
Final classification (nb)	26	-

Table 3: AFP/Polio surveillance indicators by province

Province	AFP cases, 2024					Zero reporting		Environmental surveillance, 2023			
	AFP (n)	NP AFP rate (/100000)	Adequacy (%)	Notified in 7 d (%)	Zero dose	Nb received reports	% Completeness	Sep	Oct	Nov	Dec
North	10	8.2	90%	60%	0	614	95%	NPEV/SL3	SL1/3	NPEV/SL3	NPEV/SL3
Akkar	3	3.5	100%	100%	0	458	100%				
Bekaa	3	3.0	67%	33%	0	260	96%	NPEV/SL1/3	SL1/3	SL3	SL3
Baalbeck Hermel	4	5.8	100%	100%	0	485	95%				
South	3	2.6	67%	67%	0	1208	97%	NPEV/SL3	SL3	NPEV/SL3	NPEV/SL3
Nabatieh	3	4.6	100%	67%	0	432	94%				
Beirut	4	9.7	100%	100%	0	135	100%	NPEV/SL3	SL1/3	NPEV/SL1/3	SL3
Mount Lebanon	10	3.3	90%	90%	0	308	95%				

Table 4: Indicators by district, 2024

District	AFP	Rate/100,000	Adequacy (%)
Caza			
Akkar	3	4.95	100%
Aleyh	4	10.14	75%
Baabda	3	4.08	100%
Baalbeck	3	9.24	100%
Batroun	0		
Becharreh	0		
Beirut	4	10.54	100%
West Bekaa	1	6.22	100%
Bint Jbeil	0		
Chouf	0		
Hasbaya	0		
Hermel	1	20.07	100%
Jbeil	1	6.27	100%
Jezzine	0		
Kesrwan	0		
Koura	2	16.23	50%
Marjeoun	0		
Minieh Danieh	3	14.71	100%
Metn	2	3.15	100%
Nabatieh c	3	10.93	100%
Rashaya	0		
Saida	3	5.95	67%
Sour	0		
Tripoli	4	11.20	100%
Zahleh	2	5.59	50%
Zghorta	1	7.80	100%

Fig 1: AFP cases by week, 2024

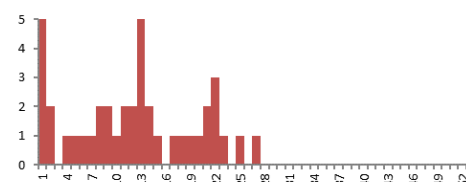


Table 3: Indicators by nationality, 2024

Population	AFP (n)	Annualized rate /100000	Specimen adequacy (%)	Notified within 7 d (%)
Resident	34	5.63	91%	85%
Palestinian	0	0.00	-	-
Syrian	6	2.46	83%	67%