

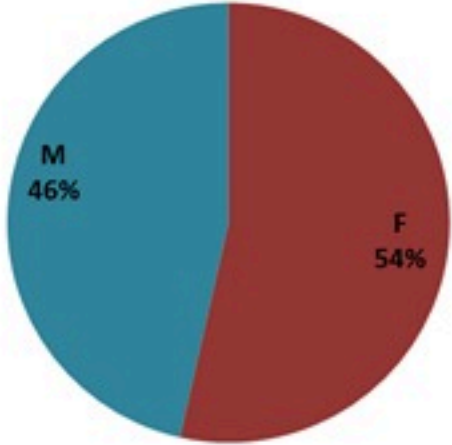
# ترصد الكوليرا في لبنان 10 اذار 2023

الجمهورية اللبنانية  
وزارة الصحة العامة  
برنامج الترصد الوبائي

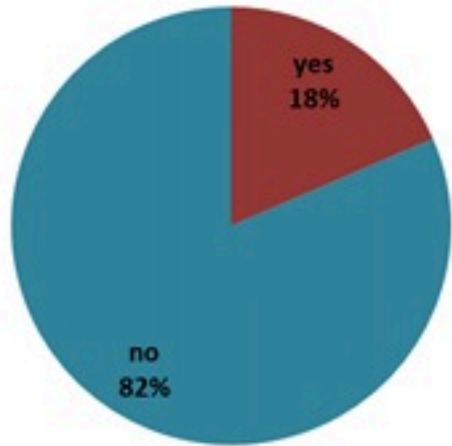


## الخطوط الساخنة

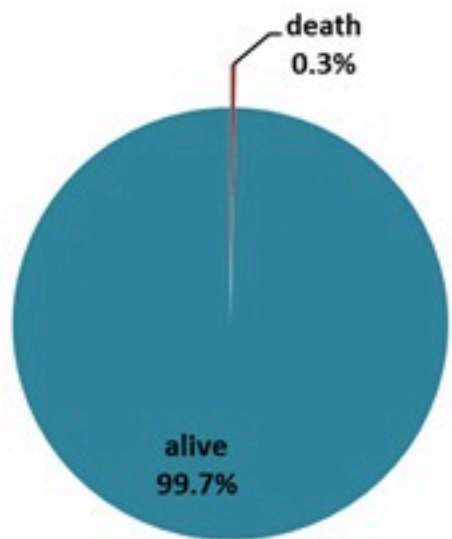
1760 (الصليب الأحمر)  
1787 (وزارة الصحة)



حسب الجنس  
(المشبهة والمتبنة)



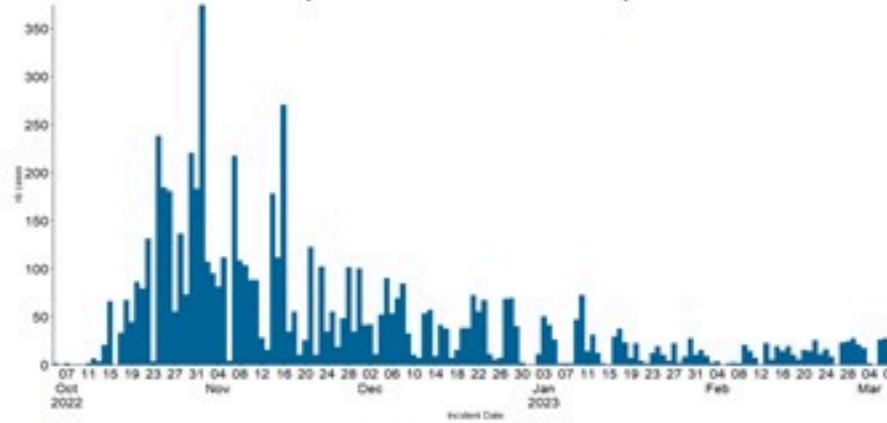
حسب الاستشفاء  
(المشبهة والمتبنة)



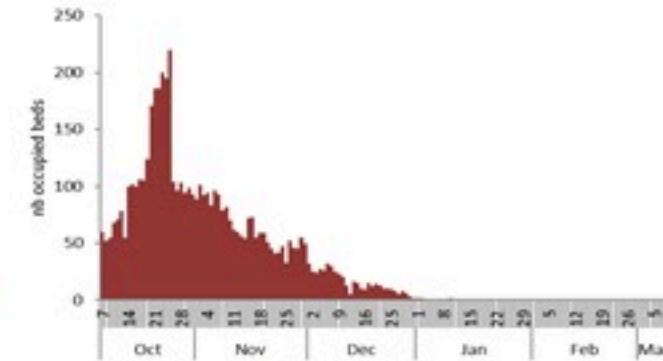
حسب تطور  
الحالة  
(المشبهة والمتبنة)

الوفيات (المتبنة)		الحالات المتبنة		كافة الحالات المشبهة والمتبنة	
التراكمي	الجديدة (آخر 24 ساعة)	التراكمي	الجديدة (آخر 24 ساعة)	التراكمي	الجديدة (آخر 24 ساعة)
23	0	671	0	6845	29

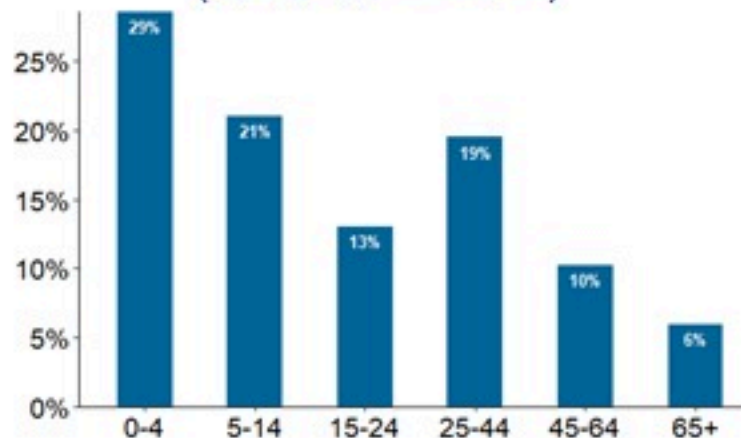
حسب تاريخ الإبلاغ  
(للحالات المتبنة والمتبنة)



استعمال الاسرة الاستشفائية  
(للحالات المتبنة والمتبنة)



حسب الفئة العمرية  
(للحالات المشبهة والمتبنة)



حسب البلدة  
(للحالات المتبنة)



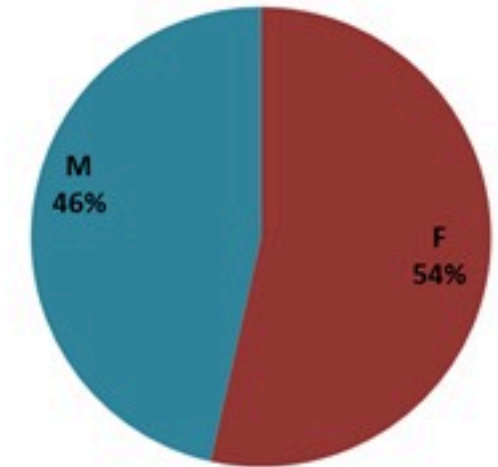
# Cholera Surveillance Report

## 10 Mar 2023

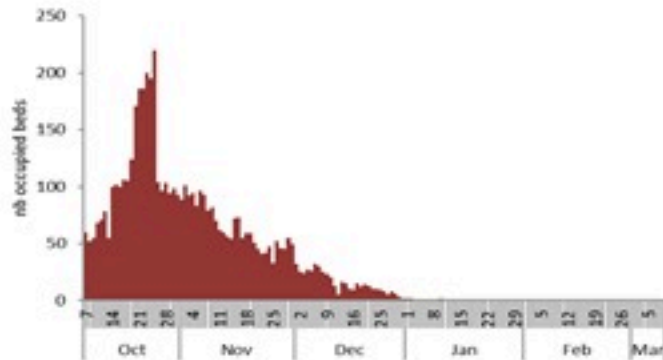
**Call Centers**  
 1760 (Red Cross)  
 1787 (MOPH)

All cases (suspected and confirmed)		Confirmed Cases		Deaths (confirmed)	
New (past 24 h)	Cumulative	New (past 24 h)	Cumulative	New	Cumulative
<b>29</b>	<b>6845</b>	<b>0</b>	<b>671</b>	<b>0</b>	<b>23</b>

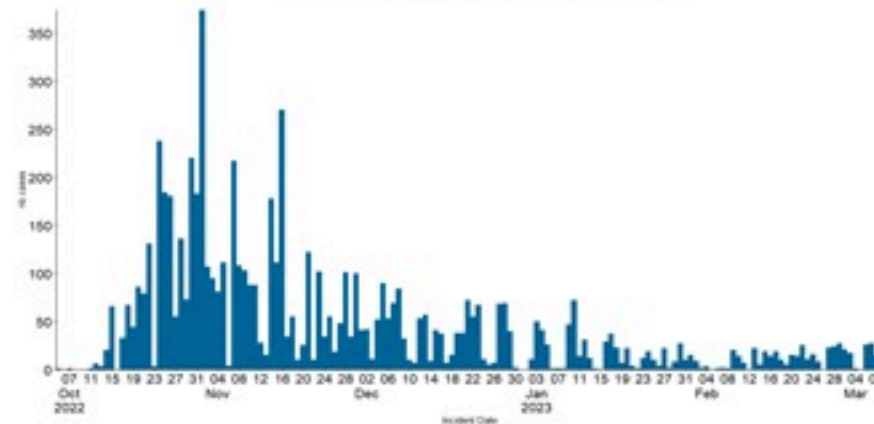
By Sex  
(suspected and confirmed)



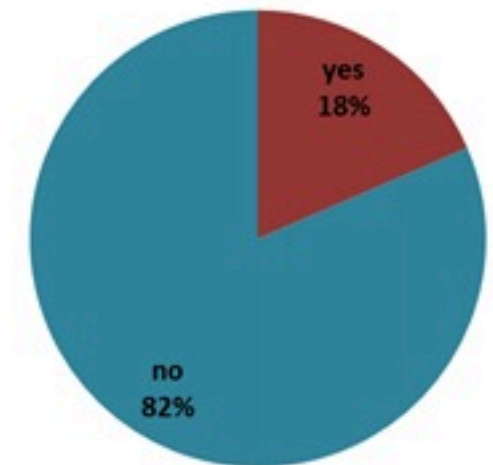
Occupied hospital beds  
(suspected and confirmed)



By date of report  
(suspected and confirmed)



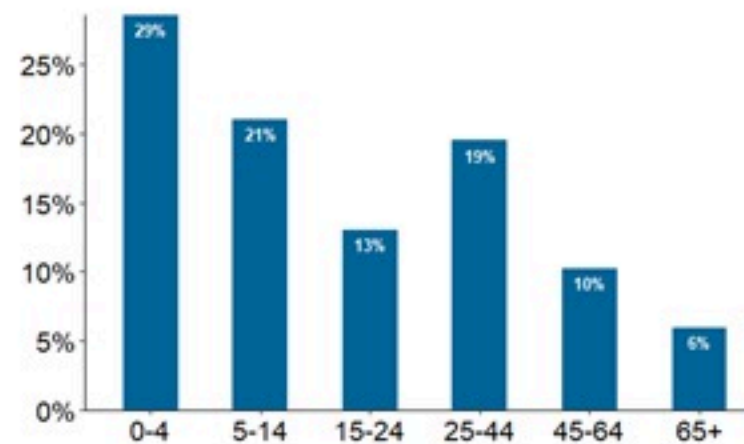
By Hospital Admission  
(suspected and confirmed)



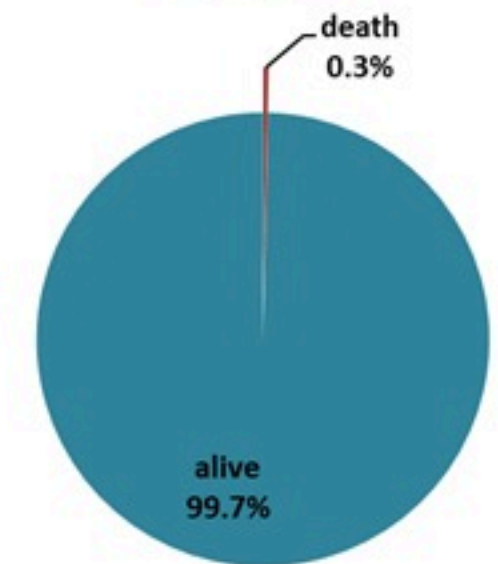
By locality (confirmed cases)



By age group  
(suspected and confirmed cases)



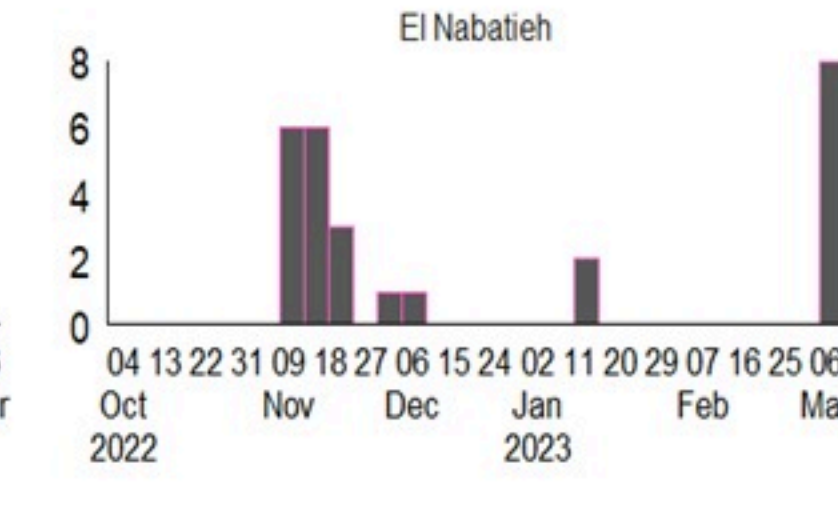
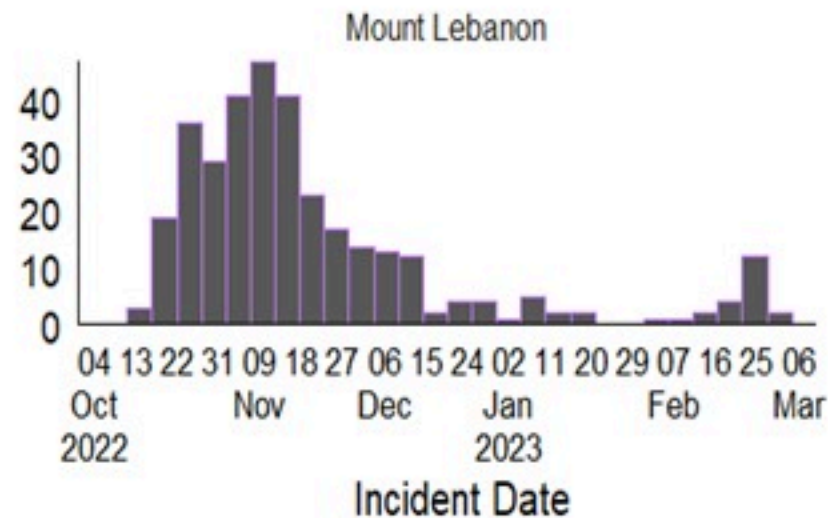
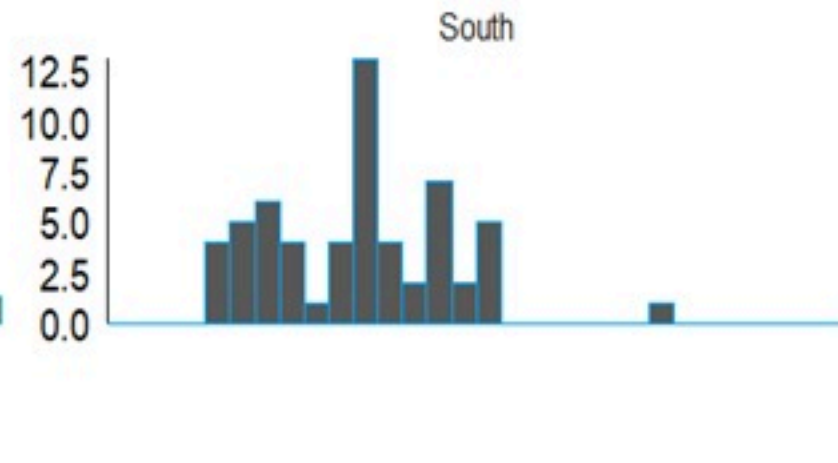
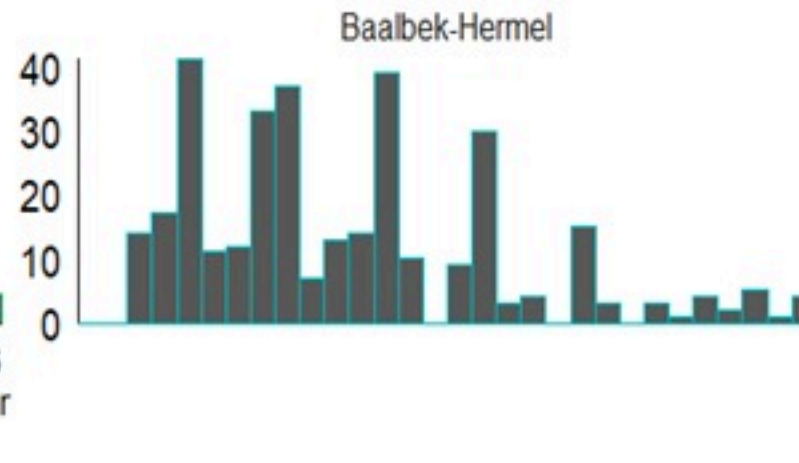
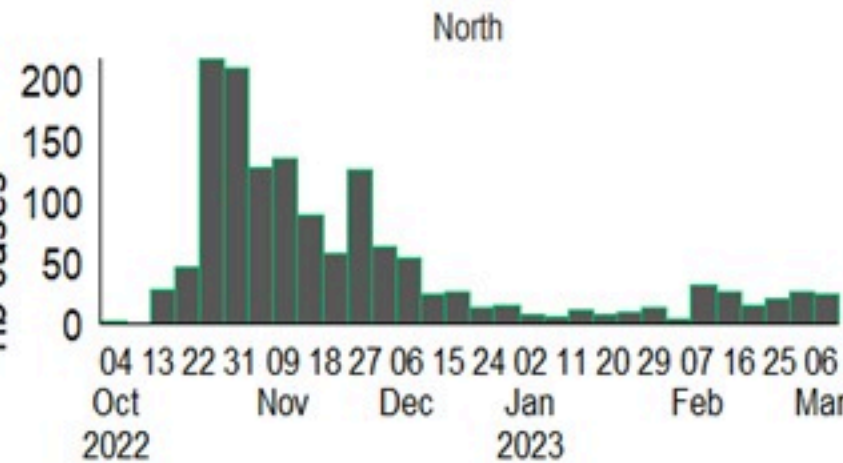
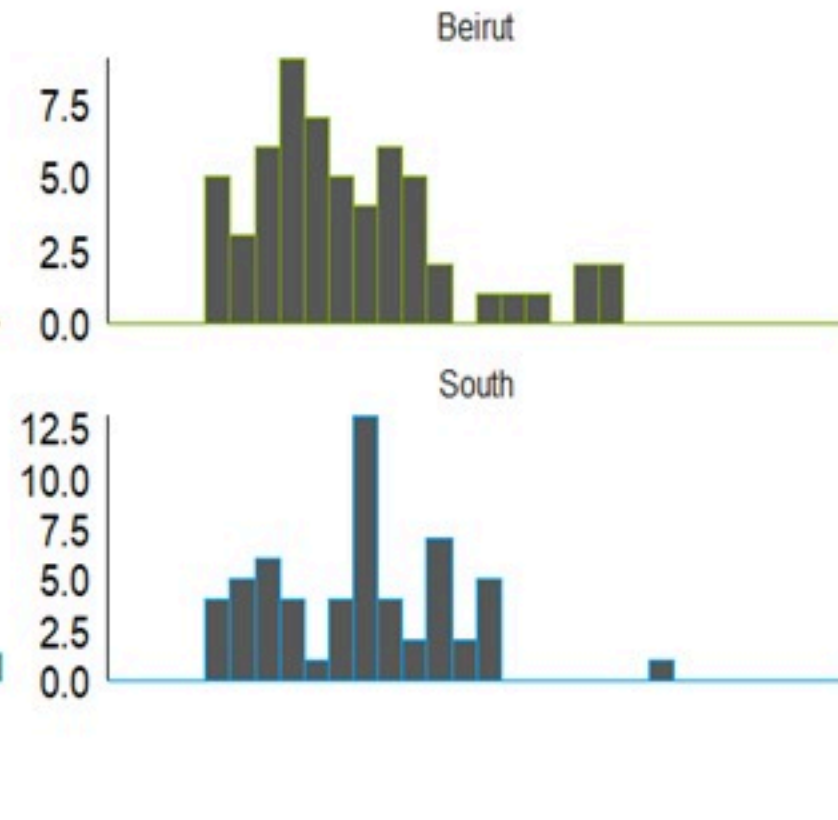
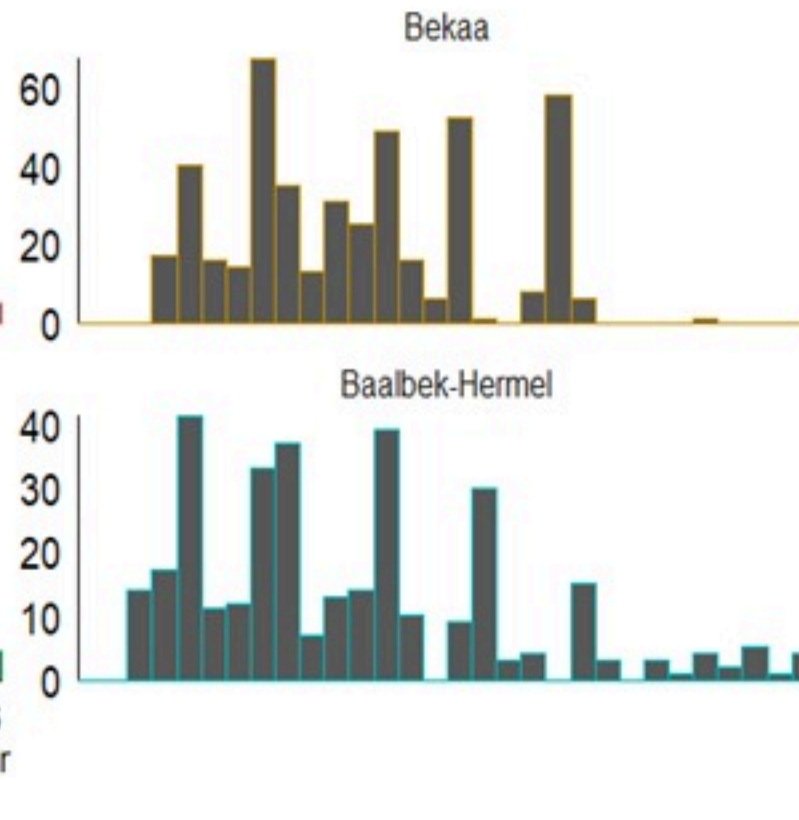
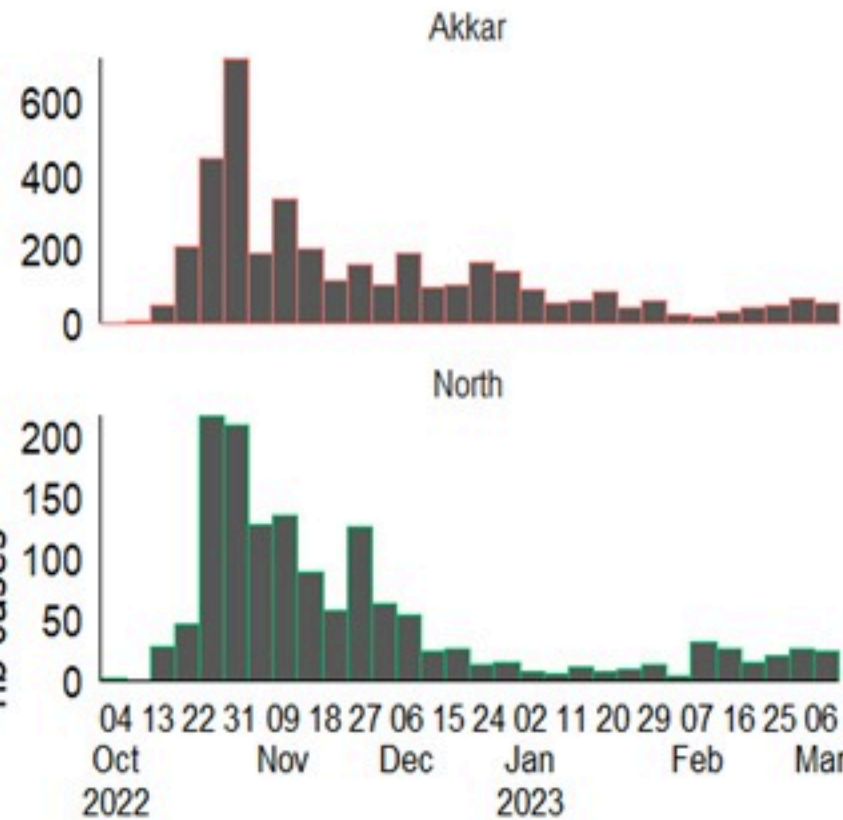
By Outcome  
(suspected and confirmed)



# Cholera Surveillance Report

## 10 Mar 2023

Epicurves by date of reporting by province  
(suspected and confirmed)



Incident Date

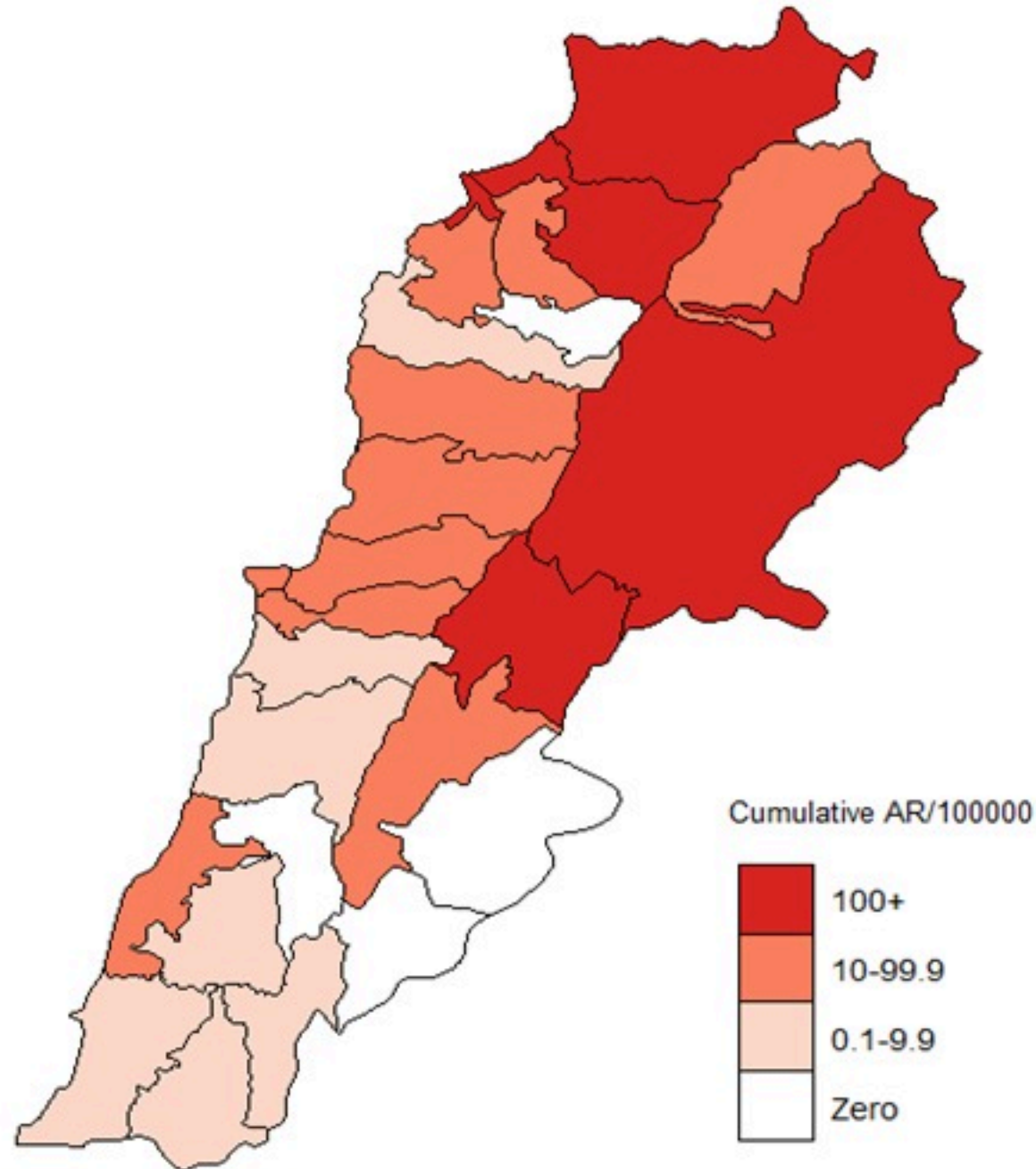
# Cholera Surveillance Update

## 10 Mar 2023

4

Cumulative Attack Rate per 100,000 (suspected and confirmed)

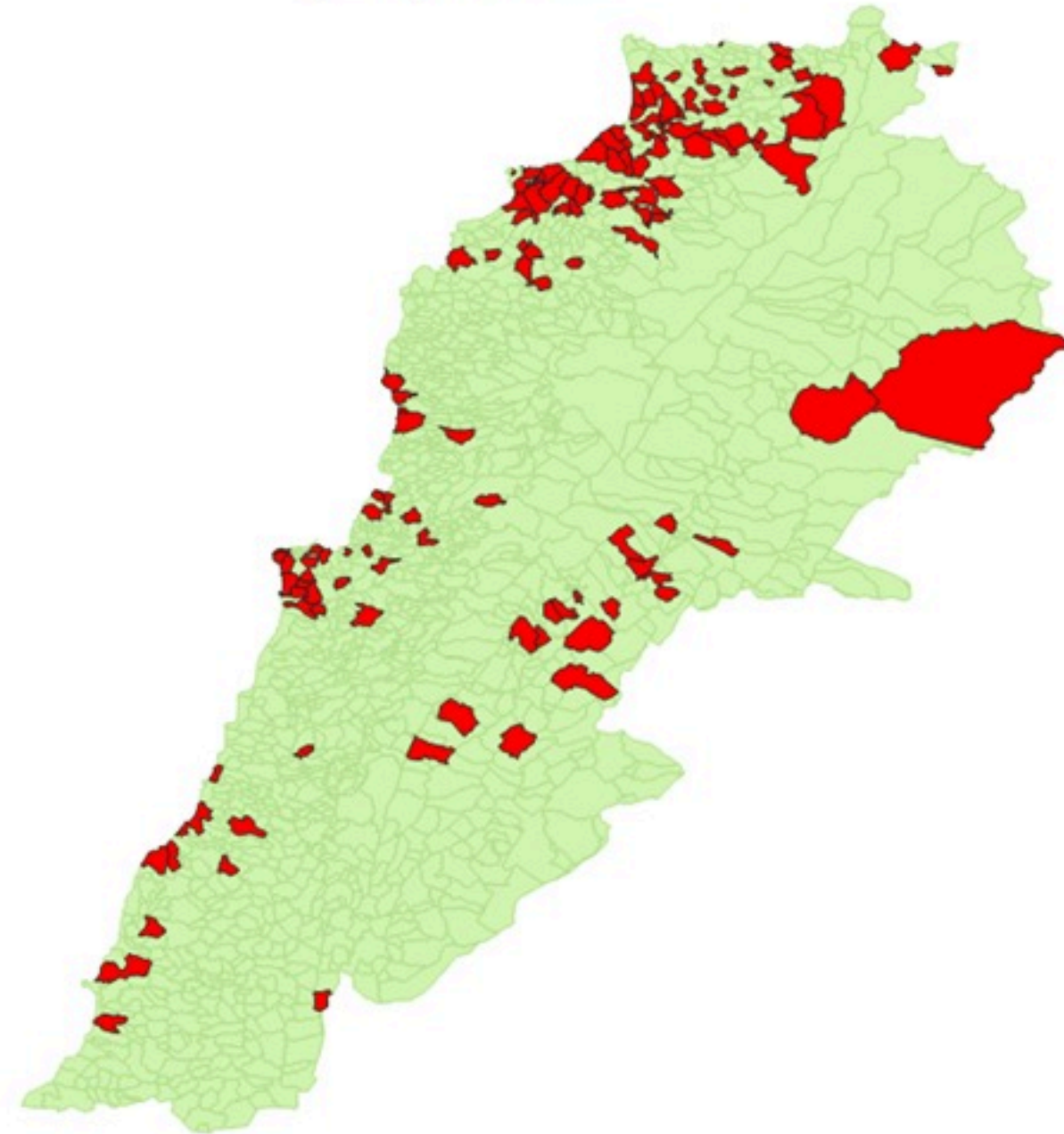
نسبة الحدوث التراكمية لكل مئة الف نسمة (الحالات المشتبهه والمثبتة)



# Cholera Surveillance Update

## 10 Mar 2023

By locality (confirmed)  
حسب البلدة (المتبئة)



Figures in table are subject to modification following updates and data correction

Caza	Locality	Cases	Caza	Locality	Cases	
Akkar	Akkar Atika	1	Kiswan	Aintouna	1	
	Amayer/Quadi Khaled	1		Ballounh	1	
	Arqa / Marlayet Haddara	2		Bqatouta	7	
	Bebnine / Baddoua	16		Ghair	2	
	Beit Hajj/Koucha/Khreibit Jindi	1		Jounieh Ghadir	4	
	Bergayel	1		Jounieh Sabra	4	
	Bezbina	1		Yahchouch	1	
	Birch	2		Zouk Mosbeh	3	
	Bqerzia	1		Kouna	Aaba	1
	Cheikh Ayache / Chir Hmairine	1			Aufdiq	1
	Dahr Qambar /Hokr Qatteh	1	Basa		1	
	Dabadab	1	Bsama		1	
	Dinbou	2	Dahr Ain / Ras Masqua		1	
	Fneydek	1	Rachdibbine		1	
	Halba	1	Kfar Aqa		1	
	Hayssa	1	Aadayssah		1	
	Hocouich	1	Marjoun		Biklaya	1
	Jdeidat Qaytee	1			Broummata	1
	Kfar Harra	4		Bsalim	1	
	Kfar Melki	1		Daruna/Borj Hammoud	2	
	Khane Hayat	1		Mansourieh	3	
	Khirbet Char	2		Zalqa	1	
	Kneisset Hnaldar	1		Minieh Danieh	Aadoua	1
	Kouachra	1			Assoun	4
	Koukikhat	2			Ain El Timh	1
	Machha	2			Bahsa	1
	Majdala	1	Bakhaoum		4	
	Memneaa	1	Bhanine / Zouk Bhanine		7	
	Mhamarah / Nahr Bared / Abdeh	22	Btamar		6	
	Minlara	1	Douniya		1	
	Mqyatea	1	Kfar Chollane		2	
	Ouadi Jamous	11	Kfar Habou		1	
	Qaabrine / Tal Hayat	1	Makabta	2		
	Qbalyat	1	Minieh	Minieh	18	
	Qlayat Akkar	2		Qouatiyeh	1	
	Qobet Chamra	17		Qatime	3	
	Rahbeh	1		Rihanieh	35	
	Ransiyeh / Deir Dalloum	1		Sir Dannieh	5	
	Saadine	4		Saïda	Aanqoun	1
	Tell Abbas Charqui	2			Bissariyeh	4
Tieil	1	Ghazieh			2	
Zouq Haddara	1	Khawayeb			3	
Zouq Hosnieh	1	Saïda			1	
Aley	Aley	1	Sawfand		1	
	Hay Selloum/Chouifat	1	Sour		Abbasiyeh	1
Baabda	Ain Roummaneh	1			Deir Qaroun Ain	4
	Borj Brajneeh	3	Baddawi		Baddawi	16
	Ghbayroh/Chiyah/Sabra	2			Mina	7
	Hadath	1	Qobbah	21		
	Haret Hireik	1	Tripoli	Tripoli Bab Raml	1	
Kfar Chima	1	Tripoli Gardans		2		
Mrejjih	2	Tripoli Haddadine		1		
Baalbeck	Arsal	27		Tripoli Nouri	1	
	Kfar Dabache	2		Tripoli Souayqa / Assaïn	3	
	Khodr	2		Tripoli Tabbaneh	21	
	Temnine Faouqa	1		Tripoli Zaitoun	15	
	Temnine Tahta	1	West Beqaa	Kamel Jaruz	1	
Younine	1	Kufaya		1		
Batroun	Chikka	1		Saghbine	1	
	Achrafieh	2		Zahleh	Aali Nahri	2
Beirut	Ain Miralssch	1			Bar Elias	2
	Hamra	1	Dalhamieh		2	
	Mdsouar / Mar Mikhael	1	Hazuch Mandra		1	
	Msaitbeh	1	Hawch Omara		7	
	Chouf	Zaarouriyeh	1		Majdal Anjar	1
Jbeil		Amchit	1		Qob Elias	9
		Ehmej	1		Raait	11
		Fidar	1		Saadinayd	11
		Halate	1		Talabaya	2
	Jbeil	1	Zahleh Madaka	2		
Mastita	2	Zghorta	Aalma	1		
Zghorta	Andeh		1	Kfar Dhaqous	2	
	Kfar Dhaqous		2	Majdalya Zghorta	7	
	Majdalya Zghorta		7	Miriata / Fozur	3	
	Miriata / Fozur		3	Sabwad	1	
	Sabwad	1	Zghorta	5		
Zghorta	5					