

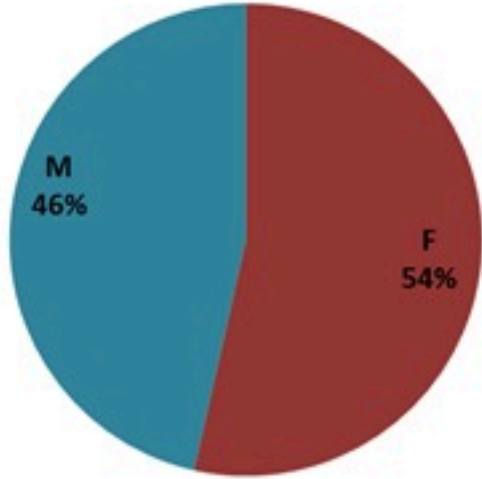
ترصد الكوليرا في لبنان 25 اذار 2023

الجمهورية اللبنانية
وزارة الصحة العامة
برنامج الترصد الوبائي



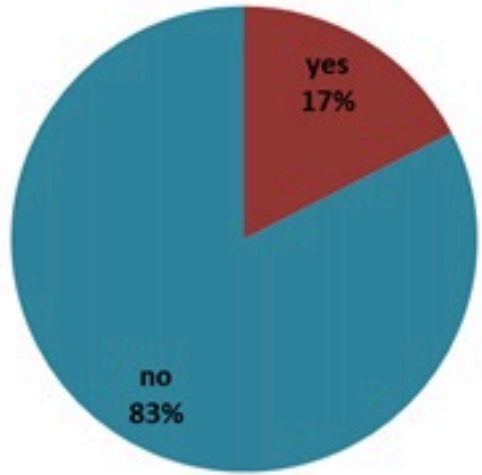
الخطوط الساخنة

1760 (الصليب الأحمر)
1787 (وزارة الصحة)



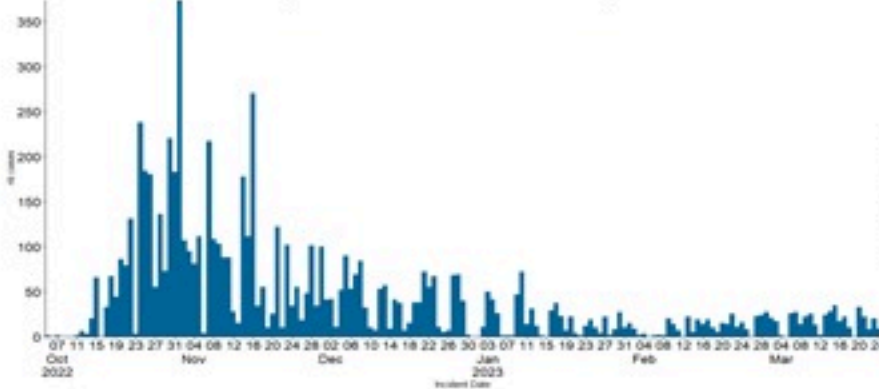
حسب الجنس
(المشبهة والمتبنة)

| الوفيات (المتبنة) | | الحالات المثبتة | | كافة الحالات المشبهة والمتبنة | |
|----------------------|--------------------------|-----------------|--------------------------|----------------------------------|--------------------------|
| التراكمي | الجديدة (آخر 24 ساعة) | التراكمي | الجديدة (آخر 24 ساعة) | التراكمي | الجديدة (آخر 24 ساعة) |
| 23 | 0 | 671 | 0 | 7117 | 10 |

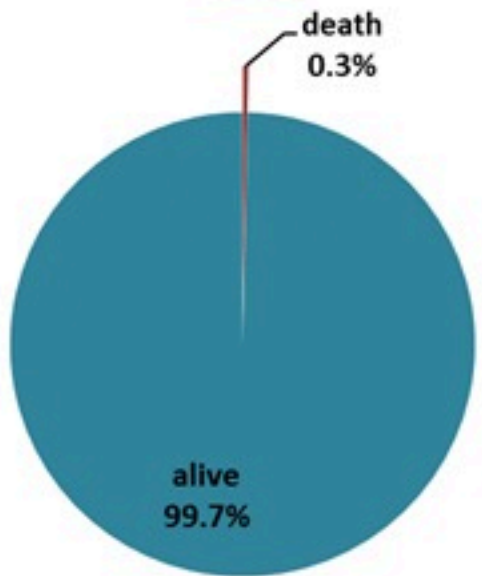
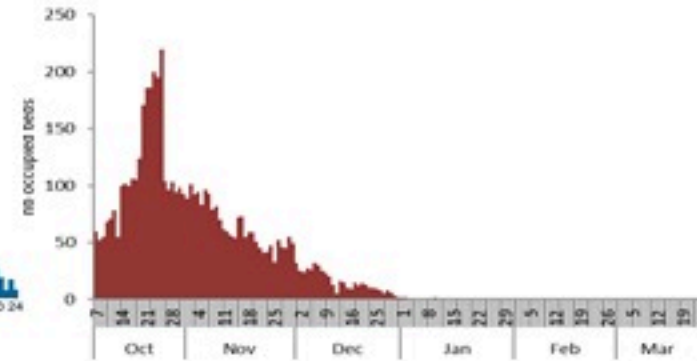


حسب الاستشفاء
(المشبهة والمتبنة)

حسب تاريخ الإبلاغ
(للحالات المثبتة والمتبنة)

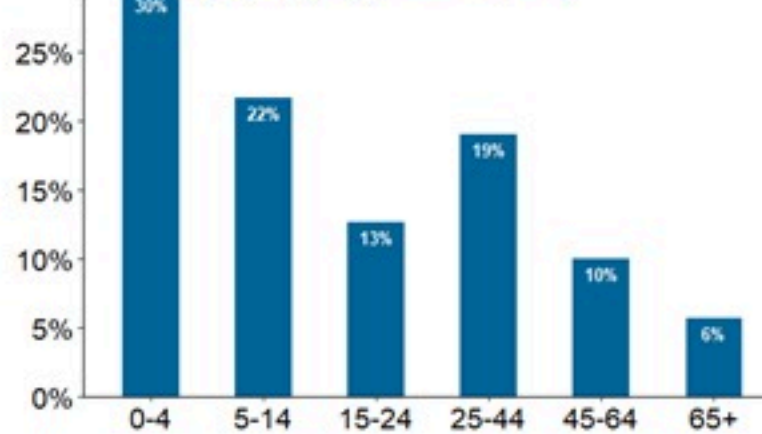


استعمال الاسرة الاستشفائية
(للحالات المثبتة والمتبنة)



حسب تطور
الحالة
(المشبهة والمتبنة)

حسب الفئة العمرية
(للحالات المشبهة والمتبنة)



حسب البلدة
(للحالات المثبتة)



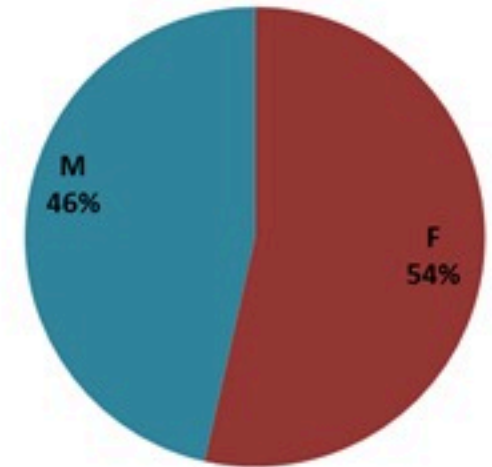
Cholera Surveillance Report

25 Mar 2023

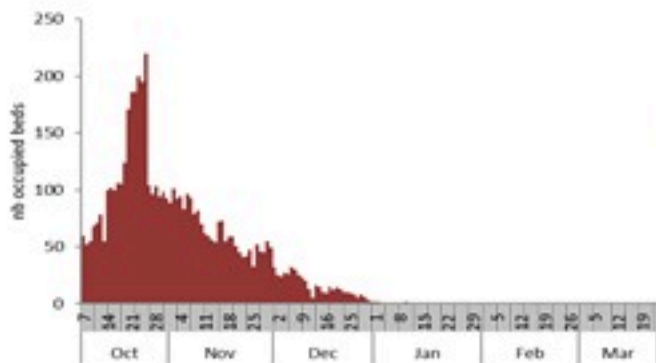
Call Centers
 1760 (Red Cross)
 1787 (MOPH)

| All cases (suspected and confirmed) | | Confirmed Cases | | Deaths (confirmed) | |
|----------------------------------------|-------------|--------------------|------------|-----------------------|------------|
| New (past 24 h) | Cumulative | New (past 24 h) | Cumulative | New | Cumulative |
| 10 | 7117 | 0 | 671 | 0 | 23 |

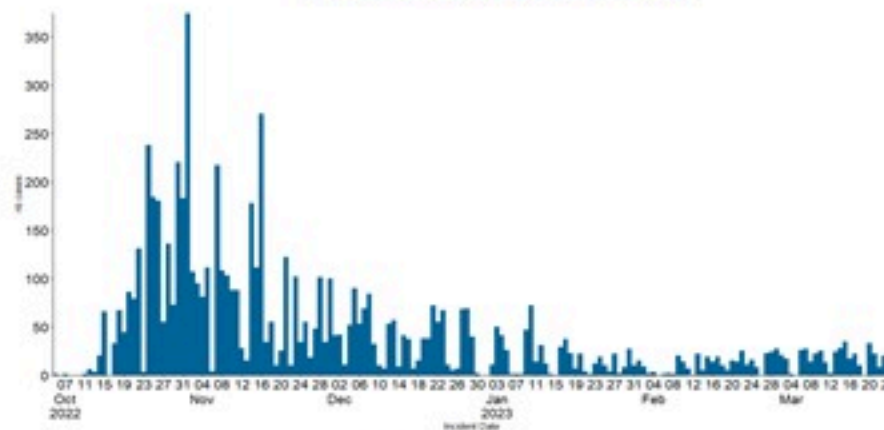
By Sex
(suspected and confirmed)



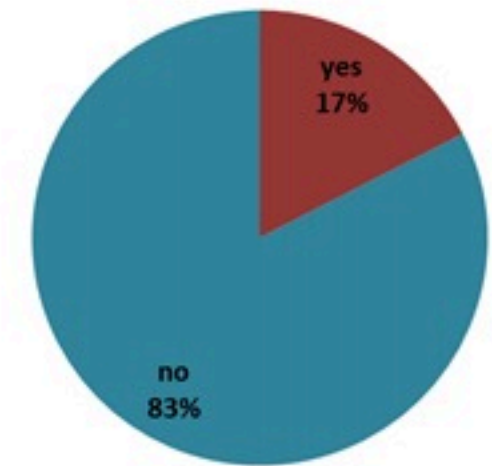
Occupied hospital beds
(suspected and confirmed)



By date of report
(suspected and confirmed)



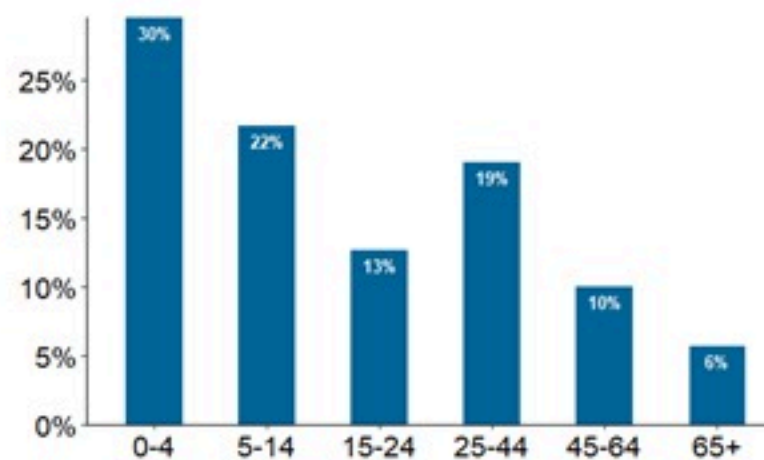
By Hospital Admission
(suspected and confirmed)



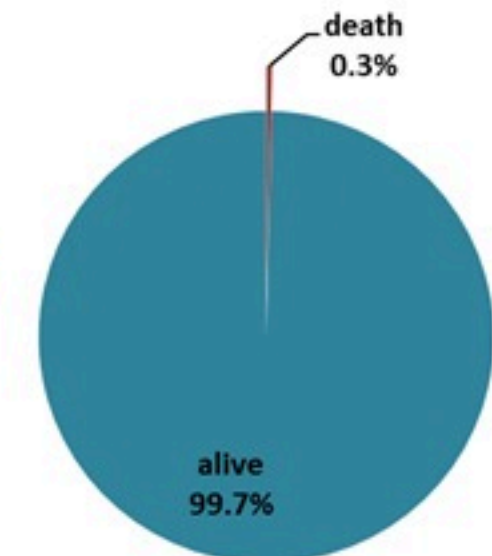
By locality (confirmed cases)



By age group
(suspected and confirmed cases)



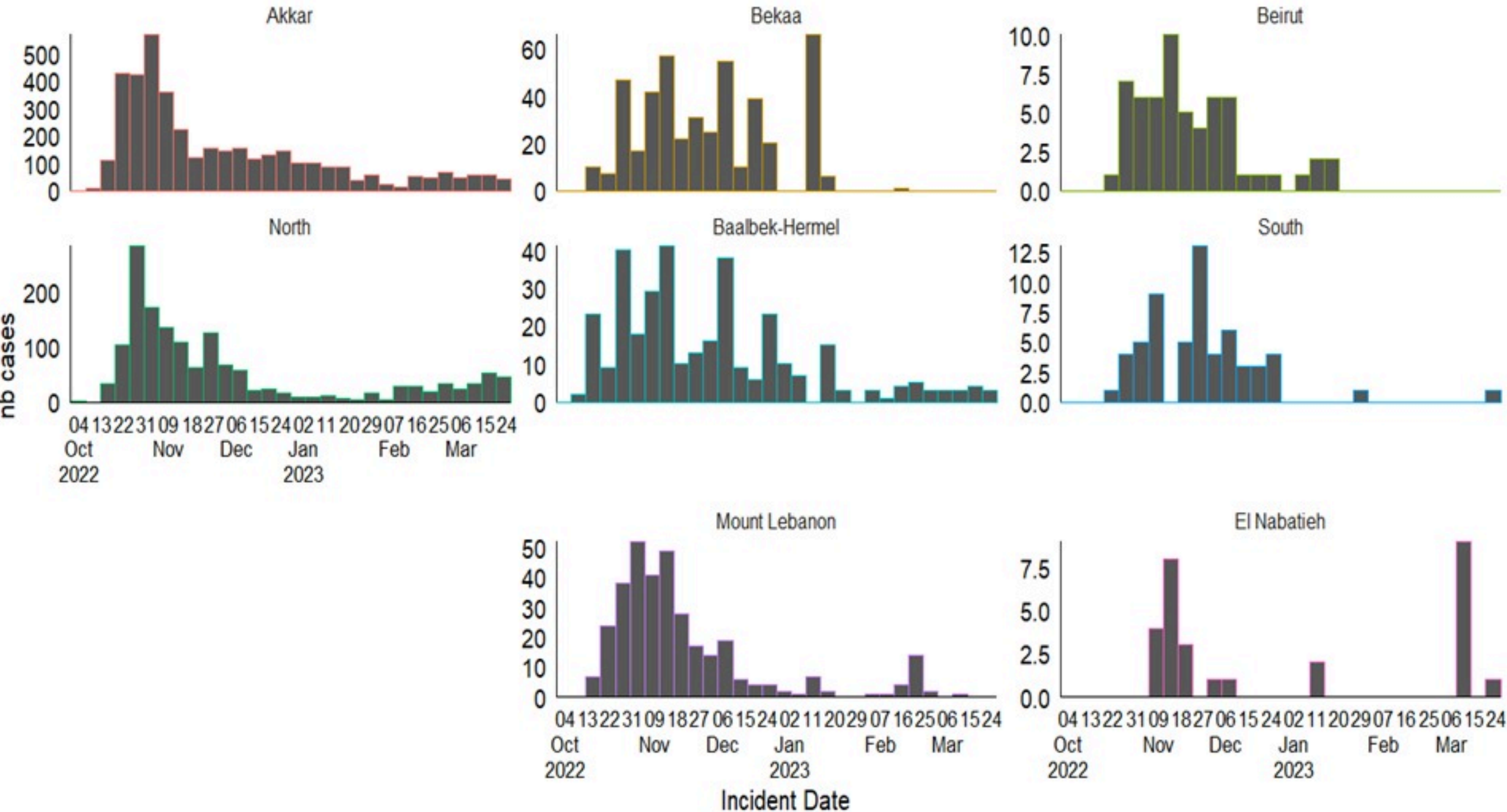
By Outcome
(suspected and confirmed)



Cholera Surveillance Report

25 Mar 2023

Epicurves by date of reporting by province
(suspected and confirmed)

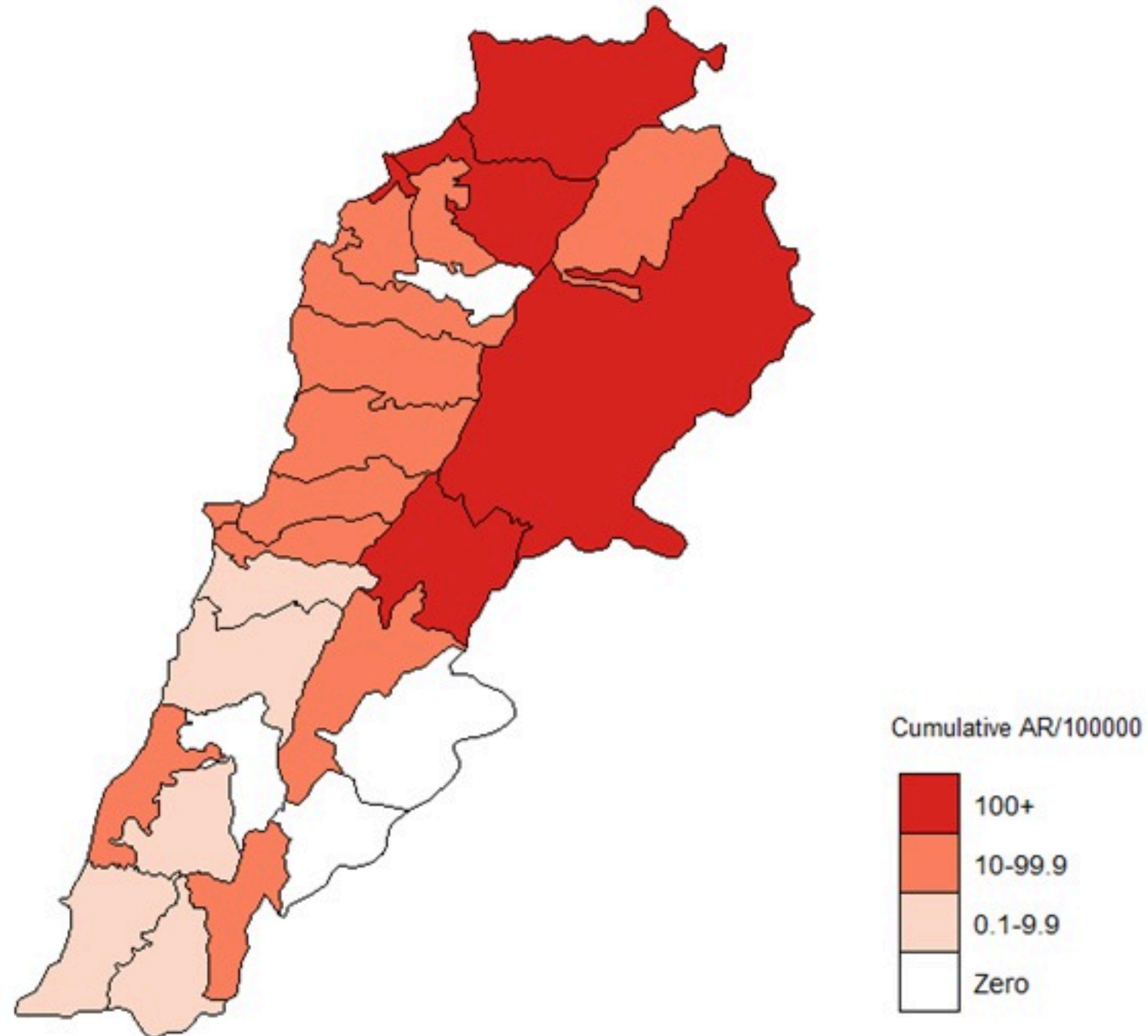


Cholera Surveillance Update

25 Mar 2023

Cumulative Attack Rate per 100,000 (suspected and confirmed)

نسبة الحدوث التراكمية لكل مئة الف نسمة (الحالات المشتبهه والمثبتة)

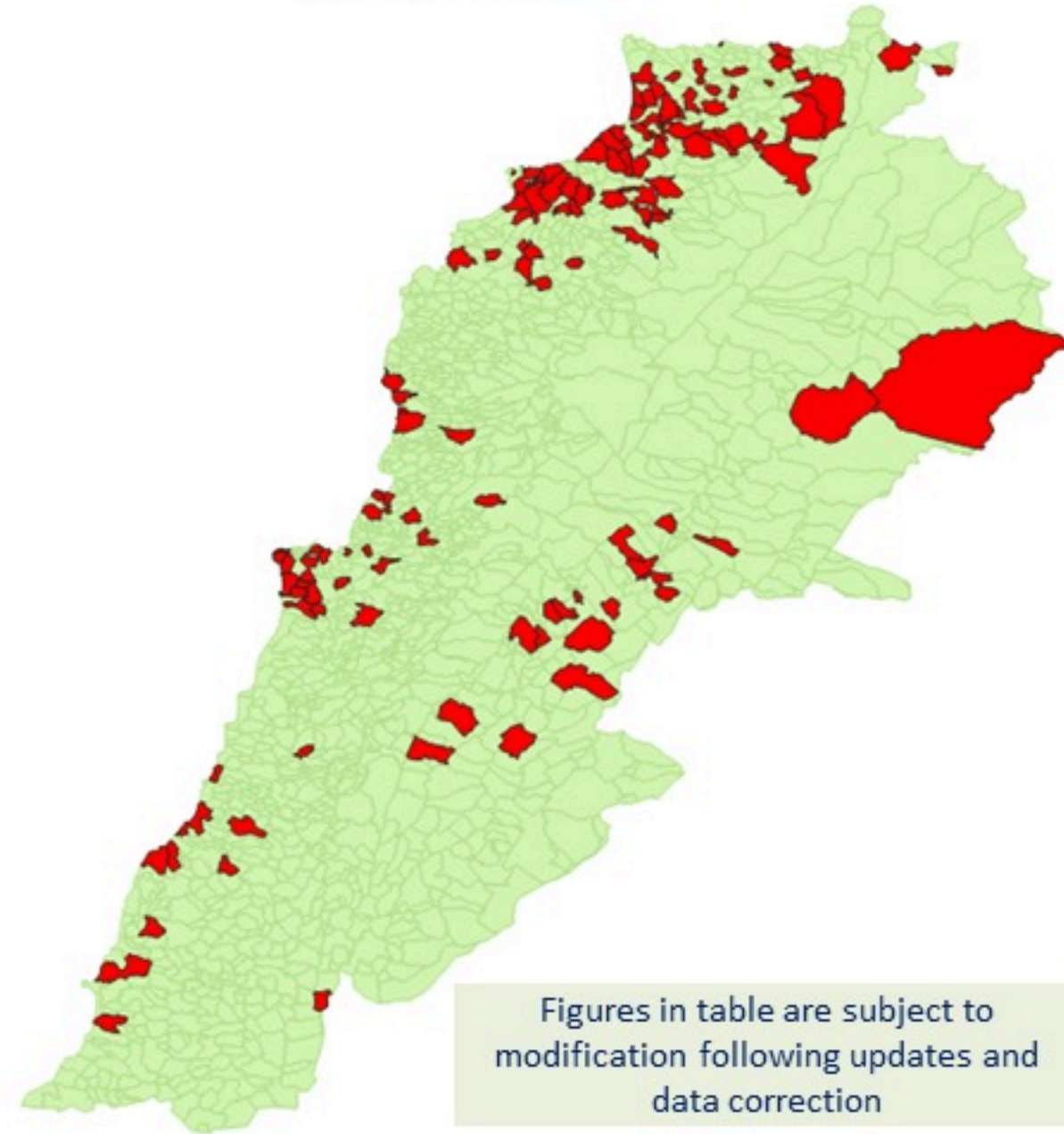


Cholera Surveillance Update

25 Mar 2023

5

By locality (confirmed)
حسب البلدة (المتبئة)



| Caza | Locality | Cases | Caza | Locality | Cases | |
|--------------------------|---------------------------------|------------------------|------------------------|--------------------------|------------------|----|
| Akkar | Akkar Atika | 1 | Kiswan | Aintouna | 1 | |
| | Amayer/Quadi Khaled | 1 | | Balfounh | 1 | |
| | Arqa / Marlayet Haddara | 2 | | Bqatouta | 7 | |
| | Bebnine / Baddoua | 16 | | Ghair | 2 | |
| | Beit Hajj/Koucha/Khreibit Jindi | 1 | | Jounieh Ghadir | 4 | |
| | Bergayel | 1 | | Jounieh Sabra | 4 | |
| | Bezbina | 1 | | Yahchouch | 1 | |
| | Birch | 2 | | Zouk Mosbeh | 3 | |
| | Bqerzia | 1 | | Kouna | Aaba | 1 |
| | Cheikh Ayache / Chir Hmairine | 1 | | | Aufdiq | 1 |
| | Dahr Qambar /Hokr Qatteh | 1 | Basa | | 1 | |
| | Dabadab | 1 | Bsama | | 1 | |
| | Dinbou | 2 | Dahr Ain / Ras Masqua | | 1 | |
| | Fneydek | 1 | Rachdibbine | | 1 | |
| | Halba | 1 | Kfar Aqa | | 1 | |
| | Hayssa | 1 | Aadayssah | | 1 | |
| | Hocouich | 1 | Marjoun | | Biklaya | 1 |
| | Jdeidat Qaytee | 1 | | | Broummata | 1 |
| | Kfar Harra | 4 | | Bsalim | 1 | |
| | Kfar Melki | 1 | | Daruna/Borj Hammoud | 2 | |
| | Khane Hayat | 1 | | Mansourieh | 3 | |
| | Khirbet Char | 2 | | Zalqa | 1 | |
| | Kneisset Hnaldar | 1 | | Minieh Danieh | Aadoua | 1 |
| | Kouachra | 1 | | | Assoun | 4 |
| | Koukikhat | 2 | | | Ain El Timh | 1 |
| | Machha | 2 | | | Bahsa | 1 |
| | Majdala | 1 | Bakhaoum | | 4 | |
| | Memneaa | 1 | Bhanine / Zouk Bhanine | | 7 | |
| | Mhamarah / Nahr Bared / Abdeh | 22 | Btamar | | 6 | |
| | Minlara | 1 | Douniya | | 1 | |
| | Mqyatea | 1 | Kfar Chollane | | 2 | |
| | Quadi Jamous | 11 | Kfar Habou | | 1 | |
| | Qaabrine / Tal Hayat | 1 | Makabta | 2 | | |
| | Qbalyat | 1 | Minieh | Minieh | 18 | |
| | Qlayat Akkar | 2 | | Qouatiyeh | 1 | |
| | Qobet Chamra | 17 | | Qatime | 3 | |
| | Rahbeh | 1 | | Rihanieh | 35 | |
| | Ransiyeh / Deir Dalloum | 1 | | Sir Danieh | 5 | |
| | Saadine | 4 | | Saïda | Aanqoun | 1 |
| | Tell Abbas Charqui | 2 | | | Bissariyeh | 4 |
| Tieil | 1 | Ghazieh | | | 2 | |
| Zouq Haddara | 1 | Khawayeb | | | 3 | |
| Zouq Hosnieh | 1 | Saïda | | | 1 | |
| Aley | Aley | 1 | Sawfand | | 1 | |
| | Hay Selloum/Chouifat | 1 | Sour | | Abbasiyeh | 1 |
| Baalbek | Ain Roumanneh | 1 | | | Deir Qaroun Ain | 4 |
| | Borj Brajneh | 3 | Baddawi | | Baddawi | 16 |
| | Ghbayroh/Chiyah/Sabra | 2 | | | Mina | 7 |
| | Hadath | 1 | Qobbah | Qobbah | 21 | |
| | Haret Hireik | 1 | | Tripoli Bab Raml | 1 | |
| | Kfar Chima | 1 | Tripoli | Tripoli Gardans | 2 | |
| Mrejjih | 2 | Tripoli Haddadine | | 1 | | |
| Baalbeck | Arsal | 27 | | Tripoli Nouri | 1 | |
| | Kfar Dabache | 2 | | Tripoli Souayqa / Assaïn | 3 | |
| | Khodr | 2 | | Tripoli Tabbaneh | 21 | |
| | Temnine Faouqa | 1 | | Tripoli Zaitoun | 15 | |
| | Temnine Tahta | 1 | West Beqaa | Kamel Jaruz | 1 | |
| Younine | 1 | Kufaya | | 1 | | |
| Batroun | Chikka | 1 | | Saghbine | 1 | |
| | Achrafieh | 2 | | Zahleh | Aali Nahri | 2 |
| Beirut | Ain Miralssch | 1 | | | Bar Elias | 2 |
| | Hamra | 1 | Dalhamieh | | 2 | |
| | Mdaouar / Mar Mikhael | 1 | Harouch Mandra | | 1 | |
| | Msaïtbeh | 1 | Hawch Omara | | 7 | |
| | Chouf | Zaarouriyeh | 1 | Majdal Anjar | 1 | |
| Jbeil | | Amchit | 1 | Qob Elias | 9 | |
| | | Ehmej | 1 | Raït | 11 | |
| | | Fidar | 1 | Saïnayd | 11 | |
| | | Halate | 1 | Talabaya | 2 | |
| | Jbeil | 1 | Zahleh Madaka | 2 | | |
| Mastita | Mastita | 1 | Zghorta | Aalma | 1 | |
| | Kiswan | Aintouna | | 1 | Andeh | 1 |
| | | Balfounh | | 1 | Kfar Dhaqous | 2 |
| | | Bqatouta | | 7 | Majdalya Zghorta | 7 |
| | | Ghair | | 2 | Mirata / Fozur | 3 |
| Jounieh Ghadir | | 4 | Sabad | 1 | | |
| Jounieh Sabra | 4 | Zghorta | 5 | | | |
| Yahchouch | 1 | Kouna | Aaba | 1 | | |
| Zouk Mosbeh | 3 | | Aufdiq | 1 | | |
| Marjoun | Biklaya | | 1 | Basa | 1 | |
| | Broummata | | 1 | Bsama | 1 | |
| | Bsalim | | 1 | Dahr Ain / Ras Masqua | 1 | |
| | Daruna/Borj Hammoud | 2 | Rachdibbine | 1 | | |
| | Mansourieh | 3 | Kfar Aqa | 1 | | |
| Zalqa | 1 | Minieh Danieh | Aadayssah | 1 | | |
| Minieh | Aadoua | | 1 | Biklaya | 1 | |
| | Assoun | | 4 | Broummata | 1 | |
| | Ain El Timh | | 1 | Bsalim | 1 | |
| | Bahsa | | 1 | Daruna/Borj Hammoud | 2 | |
| | Bakhaoum | 4 | Mansourieh | 3 | | |
| Bhanine / Zouk Bhanine | 7 | Zalqa | 1 | | | |
| Btamar | 6 | Minieh | Aadoua | 1 | | |
| Douniya | 1 | | Assoun | 4 | | |
| Kfar Chollane | 2 | | Ain El Timh | 1 | | |
| Kfar Habou | 1 | | Bahsa | 1 | | |
| Makabta | 2 | | Bakhaoum | 4 | | |
| Minieh | 18 | Bhanine / Zouk Bhanine | 7 | | | |
| Qouatiyeh | 1 | Btamar | 6 | | | |
| Qatime | 3 | Douniya | 1 | | | |
| Rihanieh | 35 | Kfar Chollane | 2 | | | |
| Sir Danieh | 5 | Kfar Habou | 1 | | | |
| Saïda | Aanqoun | 1 | Makabta | 2 | | |
| | Bissariyeh | 4 | Minieh | 18 | | |
| | Ghazieh | 2 | Qouatiyeh | 1 | | |
| | Khawayeb | 3 | Qatime | 3 | | |
| | Saïda | 1 | Rihanieh | 35 | | |
| Sawfand | 1 | Sir Danieh | 5 | | | |
| Sour | Abbasiyeh | 1 | Saïda | Aanqoun | 1 | |
| | Deir Qaroun Ain | 4 | | Bissariyeh | 4 | |
| | Baddawi | 16 | | Ghazieh | 2 | |
| | Mina | 7 | | Khawayeb | 3 | |
| | Qobbah | 21 | | Saïda | 1 | |
| Tripoli Bab Raml | 1 | Sawfand | 1 | | | |
| Tripoli Gardans | 2 | Sour | Abbasiyeh | 1 | | |
| Tripoli Haddadine | 1 | | Deir Qaroun Ain | 4 | | |
| Tripoli Nouri | 1 | | Baddawi | 16 | | |
| Tripoli Souayqa / Assaïn | 3 | | Mina | 7 | | |
| Tripoli Tabbaneh | 21 | | Qobbah | 21 | | |
| Tripoli Zaitoun | 15 | Tripoli Bab Raml | 1 | | | |
| West Beqaa | Kamel Jaruz | 1 | Tripoli Gardans | 2 | | |
| | Kufaya | 1 | Tripoli Haddadine | 1 | | |
| | Saghbine | 1 | Tripoli Nouri | 1 | | |
| | Zahleh | Aali Nahri | 2 | Tripoli Souayqa / Assaïn | 3 | |
| | | Bar Elias | 2 | Tripoli Tabbaneh | 21 | |
| Dalhamieh | | 2 | Tripoli Zaitoun | 15 | | |
| Harouch Mandra | | 1 | West Beqaa | Kamel Jaruz | 1 | |
| Hawch Omara | | 7 | | Kufaya | 1 | |
| Majdal Anjar | 1 | Saghbine | | 1 | | |
| Qob Elias | 9 | Zahleh | | Aali Nahri | 2 | |
| Raït | 11 | | | Bar Elias | 2 | |
| Saïnayd | 11 | | Dalhamieh | 2 | | |
| Talabaya | 2 | | Harouch Mandra | 1 | | |
| Zahleh Madaka | 2 | | Hawch Omara | 7 | | |
| Zghorta | Aalma | 1 | Majdal Anjar | 1 | | |
| | Andeh | 1 | Qob Elias | 9 | | |
| | Kfar Dhaqous | 2 | Raït | 11 | | |
| | Majdalya Zghorta | 7 | Saïnayd | 11 | | |
| | Mirata / Fozur | 3 | Talabaya | 2 | | |
| Sabad | 1 | Zahleh Madaka | 2 | | | |
| Zghorta | 5 | Zghorta | Aalma | 1 | | |
| Kouna | Aufdiq | | 1 | Andeh | 1 | |
| | Basa | | 1 | Kfar Dhaqous | 2 | |
| | Bsama | | 1 | Majdalya Zghorta | 7 | |
| | Dahr Ain / Ras Masqua | | 1 | Mirata / Fozur | 3 | |
| | Rachdibbine | 1 | Sabad | 1 | | |
| Kfar Aqa | 1 | Zghorta | 5 | | | |